



Service Bulletin

File in Section: -

Bulletin No.: 16-NA-145

Date: May, 2016

TECHNICAL

Subject: Service Airbag Light Illuminated and B0074 (0D or 0E) DTC Set

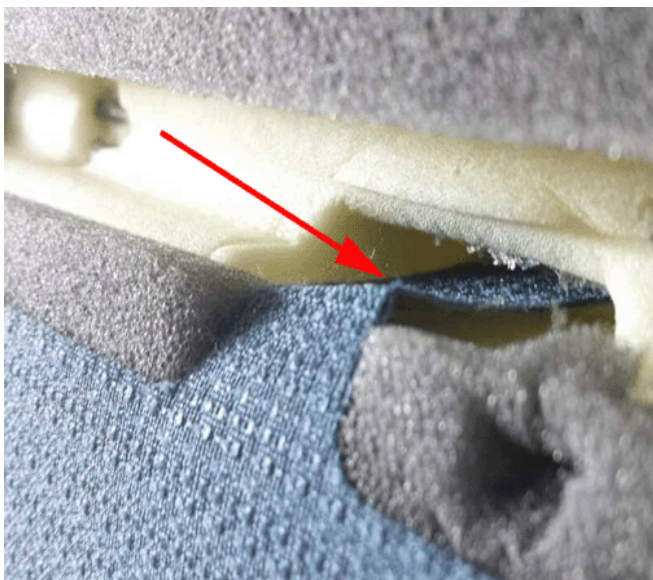
Brand:	Model:	Model Year:		VIN:		Engine:	Transmission:
		from	to	from	to		
Buick	Verano	2012	2016			All	All

Involved Region or Country	North America, China
Condition	<p>Some customers may comment on a Service Airbag Light illuminated, the Service Airbag System message on the DIC, and observe the Passenger Airbag Status Indicator display OFF.</p> <p>During diagnosis a technician may find DTC B0074 (0D or 0E) set within the Passenger Presence System (PPS) module. In conjunction with this DTC, B0081 (00) will be set current in the Sensing and Diagnostic Module (SDM).</p> <p>Upon inspection of the sensor after trim removal, the technician may find a sharp crease in the passenger presence sensor in the area where the sensor tail exits through to the bottom of the seat cushion assembly.</p>
Cause	<p>This crease may be caused during the seat trim hog-ringing operation by pinching the sensor tail between the cushion pad and the trim's tiedown feature. In some instances, the harness pigtail is not fully pulled through the seat pad increasing the opportunity to have it get trapped between the trim tiedown feature and cushion pad. After customer ingress, egress and knee-loading of the seat, flexing of the sensor mat at this tail area crease may cause an open or high resistance in the printed circuit.</p>

Correction

If you encounter a vehicle with the above concern replace the front passenger presence sensor. Refer to *Airbag Front Passenger Presence Sensor Replacement* in SI.

Note: Crease observed in tail area from top side.



4502711



4505464

Note: Crease observed in tail area from bottom side.



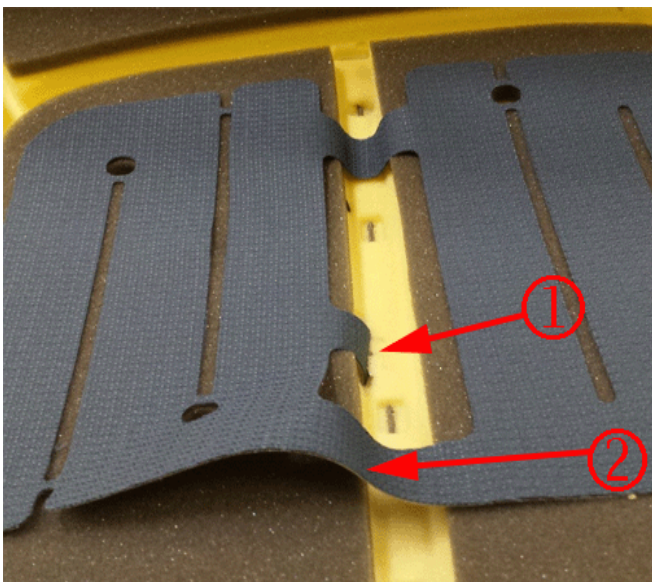
4505465

Note: Sensor tail observed trapped between seat trim tiedown feature and cushion pad.



4505466

Important: Be sure to inspect the sensor tail area of the new service part to ensure no creases or other damage exists.



4520474

Legend

- (1) Sensor Tail
- (2) Loose Sensor Mat

Important: The service kit sensor mat may have come loose from the cushion pad during shipping of the service kit. If this is observed, re-center the mat on the cushion pad and using the palm of the hand, apply light pressure to re-adhere the sensor to the pad assembly taking care to not create any folds or creases in the mat or sensor tail. Once trim is re-installed, the sensor mat will retain it's position.

Important: When reassembling the seat, take great care to not create a crease in the tail of the passenger presence sensor as shown above.



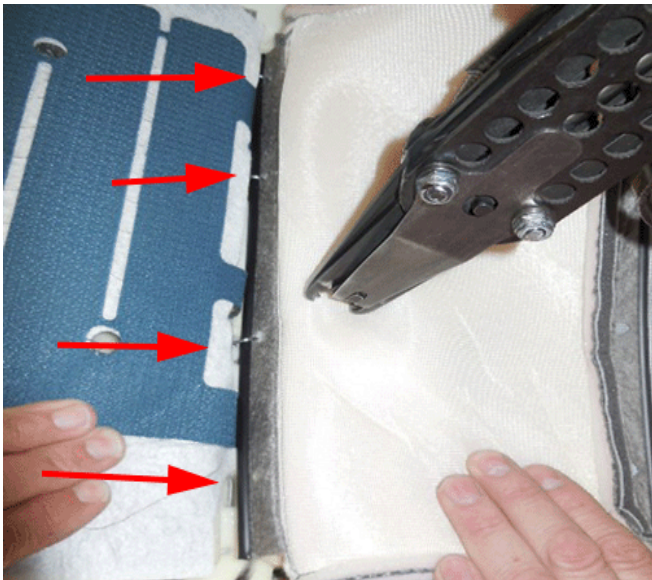
4505467

Important: Ensure that the sensor harness pigtail is fully pulled through the foam and snug against the seat pad to ensure customer does not have a repeated issue with the sharp crease in the sensor tail.



4505468

Important: Ensure the sensor pigtail is fully pulled through the seat pad. The white felt patch on the harness should start to be seen below the surface of the pad.



4520475

Important: Ensure not to pinch the sensor tail in the process of hog-ringing the trim to the cushion pad. When using the hog-ring gun, fold the trim to the right (inboard) side and apply the 4 (four) hog-rings located in the center trench in the direction away from the sensor tail (hog-ring gun aimed towards in-board side of cushion pad).

Warranty Information

Labor Operation	Description	Labor Time
6450950	Airbag Front Passenger Presence Sensor Replacement	Use Published Labor Operation Time

Version	2
Modified	May 16, 2016 — Updated Warranty Information with different labor operation.

