

© 2016 Mazda Motor of America, Inc.

Subject: WATER PUMP COOLANT LEAK	Bulletin No: 01-016/16
	Last Issued: 08/26/2016

BULLETIN NOTE

This bulletin supersedes the previously issued bulletin(s) listed below: The changes are noted in Red beside the change bars.

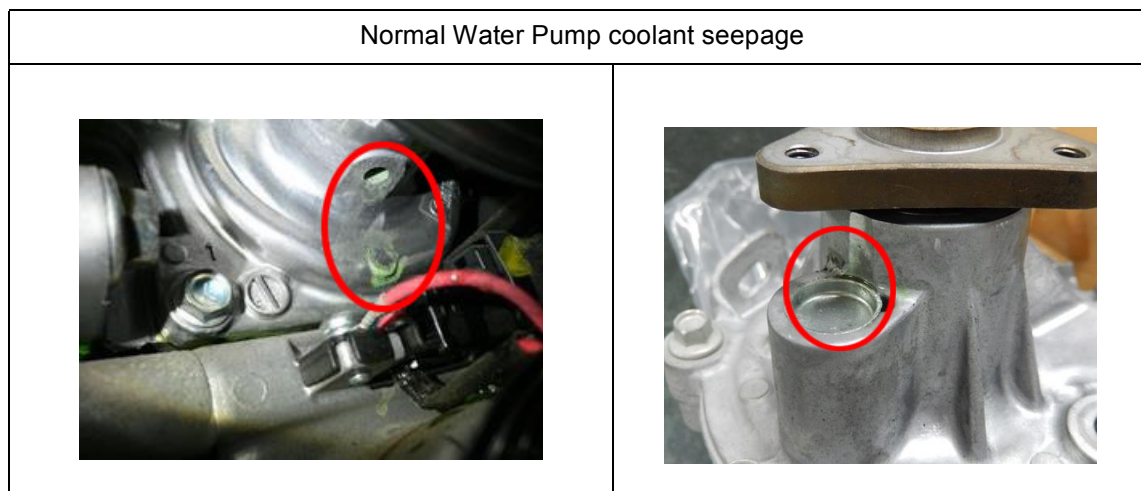
Previously issued TSBs:	Date issued:
01-004/09	02/03/2009

APPLICABLE MODEL(S)/VINS

2004-2017 Mazda3	2016-2017 Mazda CX-3	2007-2017 Mazda CX-9
2006-2015 Mazda5	2013-2017 Mazda CX-5	2004-2005 Mazda Miata
2003-2017 Mazda6	2007-2012 Mazda CX-7	2006-2017 Mazda MX-5

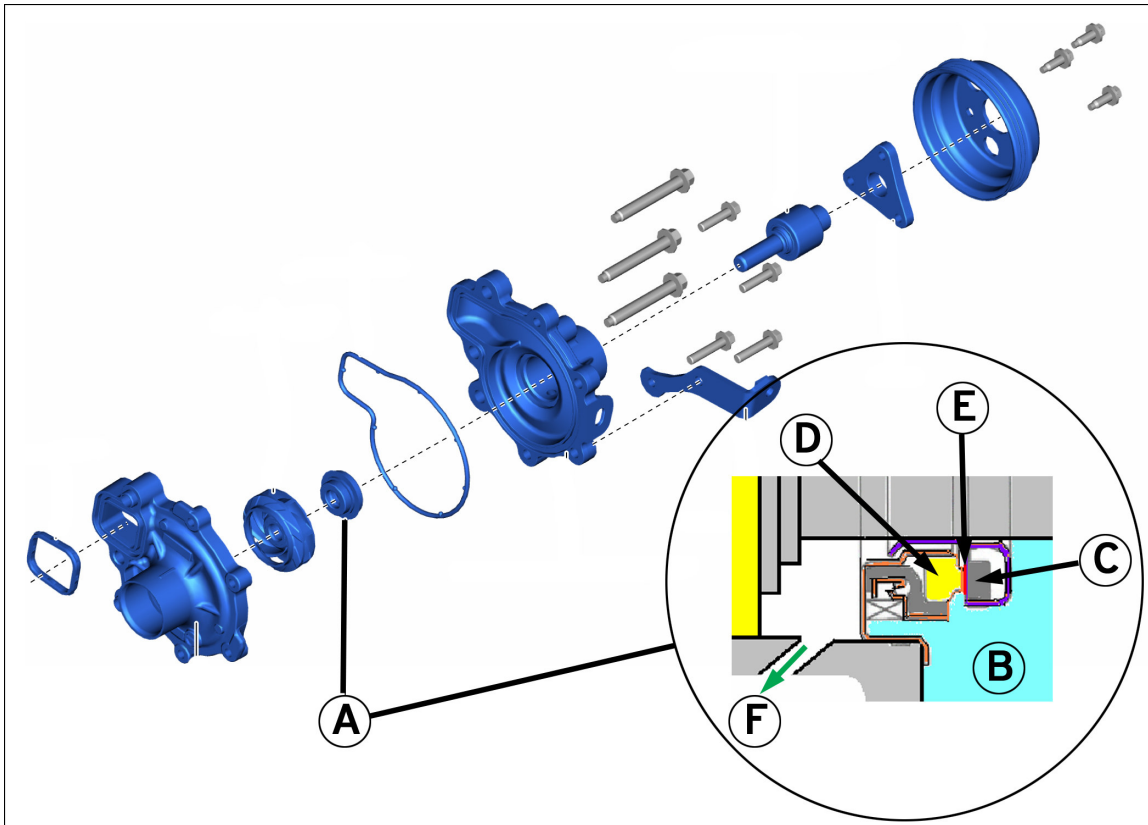
DESCRIPTION

There is a concern that some water pumps are being replaced that are not faulty, due to signs of a very small coolant leak from the bleed hole. This Service Bulletin is to inform you about the water pump sealing mechanism and the criteria if replacement is necessary or not.

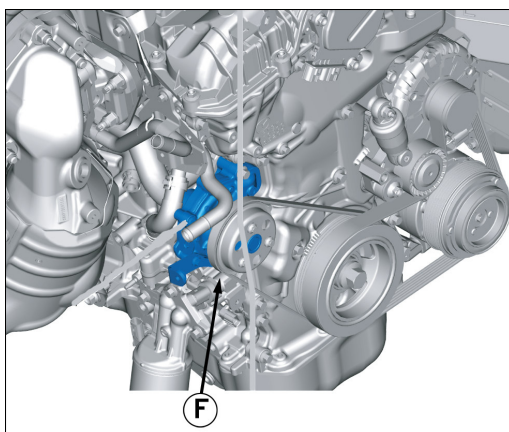


CONSUMER NOTICE: The information and instructions in this bulletin are intended for use by skilled technicians. Mazda technicians utilize the proper tools/equipment and take training to correctly and safely maintain Mazda vehicles. These instructions should not be performed by "do-it-yourselfers." Customers should not assume this bulletin applies to their vehicle or that their vehicle will develop the described concern. To determine if the information applies, customers should contact their nearest authorized Mazda dealership. Mazda North American Operations reserves the right to alter the specifications and contents of this bulletin without obligation or advance notice. All rights reserved. No part of this bulletin may be reproduced in any form or by any means, electronic or mechanical---including photocopying and recording and the use of any kind of information storage and retrieval system ---without permission in writing.

A mechanical seal (A) is used for the water pump. This mechanical seal can seal coolant (B) by sliding a mating ring (C) against a seal ring (D). When the sliding surface temperature of the mechanical seal is more than 248 °F (120 °C) while driving, a small amount of steam (E) is leaked and bleeds through the bleeding hole (F). After drying, the steam leaves a green coolant deposit near the water pump bleed hole (F). This is a normal condition and does not require water pump replacement. The water pump should only be replaced if there is an accumulation of crystallized coolant near the bleed hole.



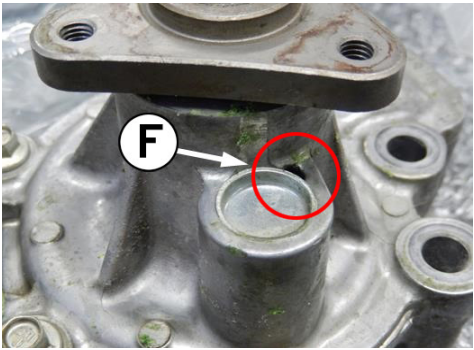
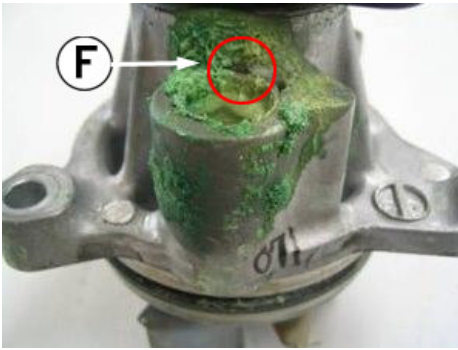




Bleed hole (F) is located under water pump



Dried coolant steam shows as green-color deposit at bleed hole.

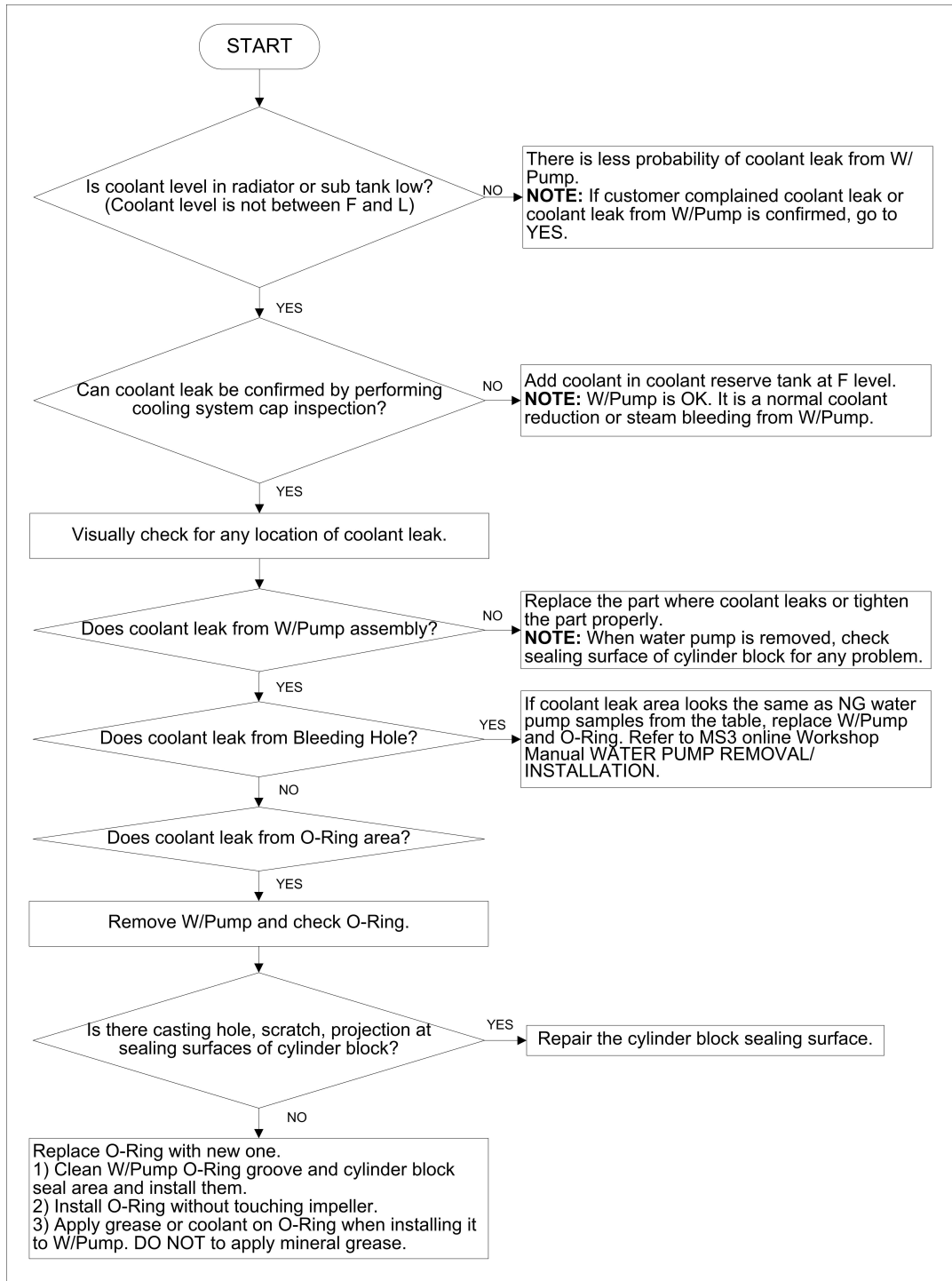


Water Pump Samples:

<p>GOOD No accumulation of crystallized coolant. DO NOT replace the water pump.</p>	<p>NG Accumulation of crystallized coolant near the bleed hole (F). Replace the water pump.</p>
	
	
	

REPAIR PROCEDURE

1. Verify customer concern.



2. Verify repair.