



Service Bulletin

File in Section: -

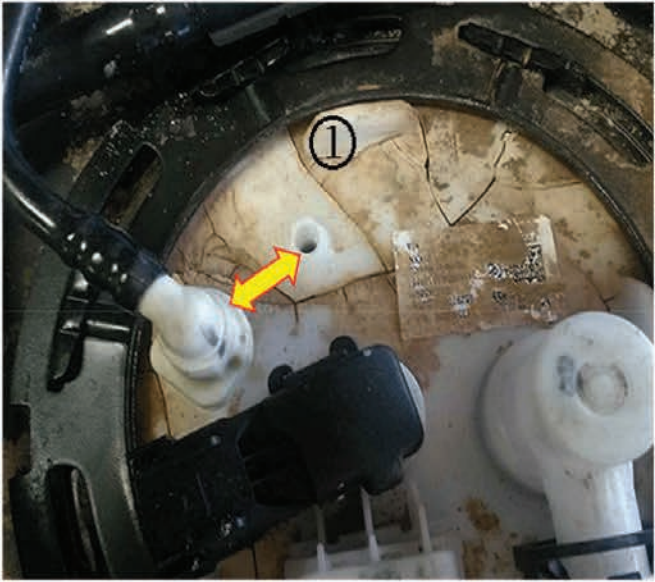
Bulletin No.: 16-NA-195

Date: June, 2016

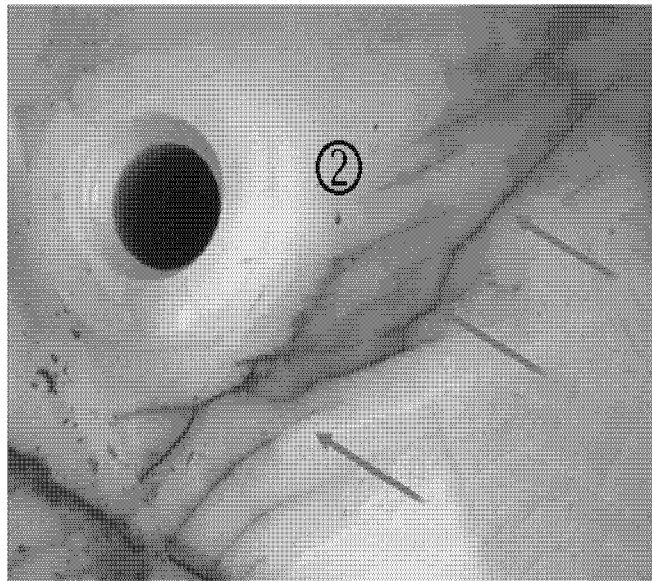
TECHNICAL

Subject: Fuel Odor, Fuel Leak, Fuel Weeping from Top of Tank

Brand:	Model:	Model Year:		VIN:		Engine:	Transmission:
		from	to	from	to		
Chevrolet	Colorado	2015	2016			All	All
GMC	Canyon	2015	2016			All	All

Involved Region or Country	NORTH AMERICA, GUAM, MEXICO, PUERTO RICO
Condition	Some customers may comment on a fuel odor, fuel leak or fuel weeping from the top of the fuel tank.
Cause	

4541252



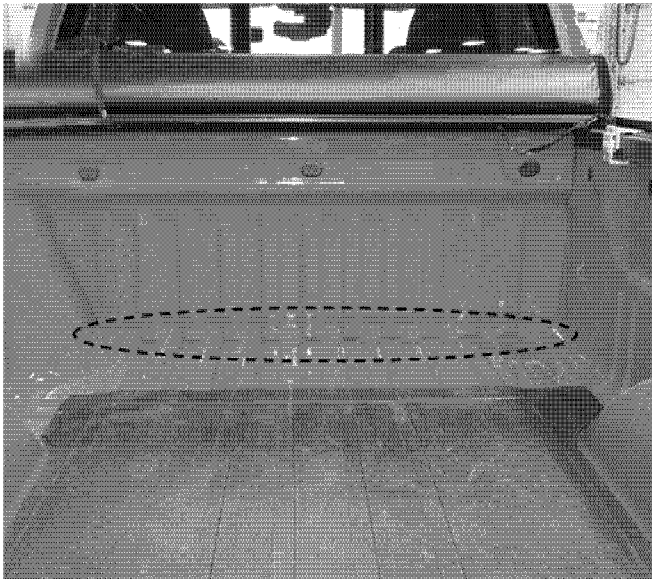
4541256

The cause may be sulfuric acid, or other such chemicals, placed in the bed of the truck that has either leaked or been washed through the holes in pickup box, and settled onto the top of the fuel tank. Examples of chemical damage to the fuel pump module such as a fractured port (1) and cracks in the plastic flange (2), are shown in the graphics above.

Correction

Note: Vehicles with a spray-on bed liner can still exhibit the condition because the floor/front panel seam is not fully sealed. Spray-on bed liner vehicles should have a black sealer product applied, while any other vehicles should have clear product applied, regardless of paint color.

Verify fuel pump damage/failure and follow the Service Procedure below to replace the fuel pump and seal the pickup box.

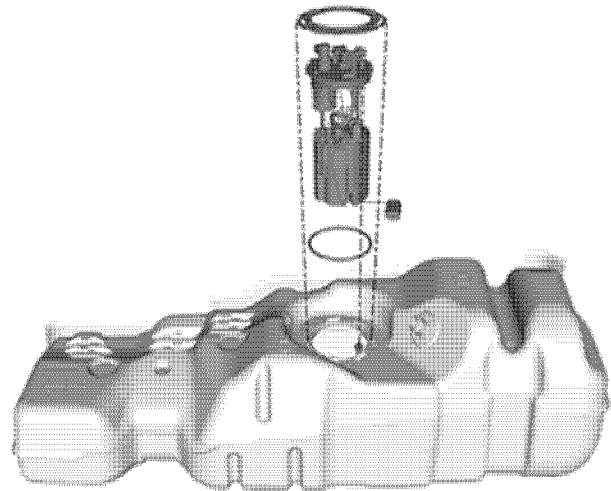


4539295

The top side front joint of the pickup bed floor and front panel, shown circled above, is the area that seam sealant will be applied.

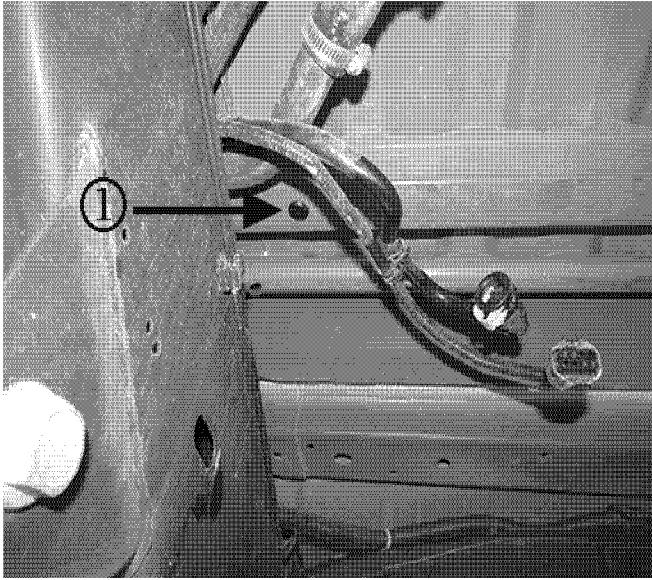
Service Procedure

1. Raise and suitably support the vehicle. Refer to *Lifting and Jacking the Vehicle* in SI.



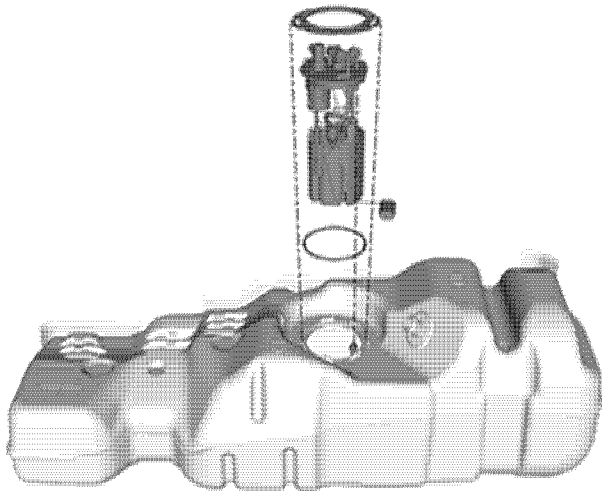
4539297

2. Remove the fuel tank fuel pump module. Refer to *Fuel Tank Fuel Pump Module Replacement* in SI.



4539299

3. **Before reinstalling the fuel tank to the vehicle**, install one drain hole plug (1) to the open left side drain hole location shown above.



4539297

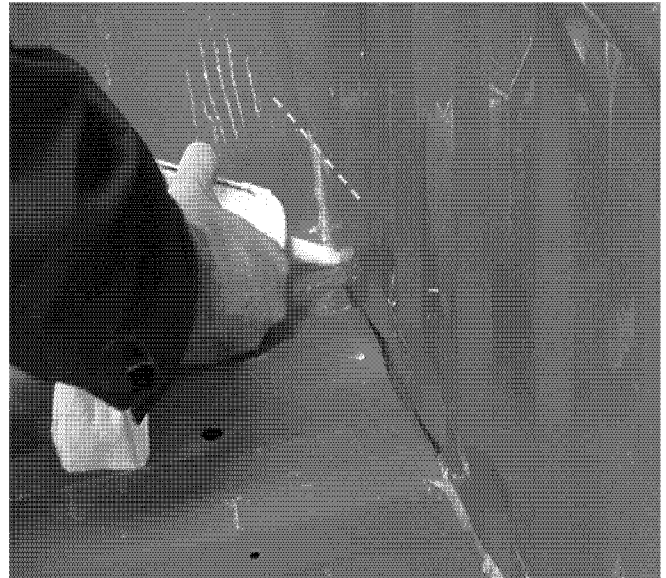
4. Install the new fuel pump module. Refer to *Fuel Tank Fuel Pump Module Replacement* in SI.
 5. Lower the vehicle.
 6. Using an air hose, blow out any dirt/debris from the front joint of pickup bed floor and front panel.



4539302

7. Use a rag and wax/grease removing solvent such as Acrysol, or equivalent, to remove any dirt, grease, oil or chemical residue from the repair area.

Note: Application of the clear seam sealer is shown in the steps below. Application of the black sealer, on a spray-on bed liner, should follow the same process.



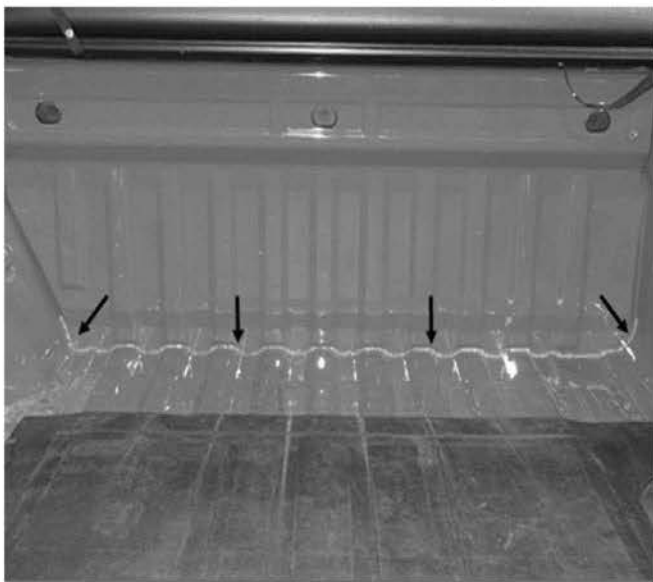
4539304

Important: As shown in the graphic above, ensure the lower corners are fully sealed by applying sealant past the bottom radius and up to the front panel body line.



4539308

- Using an appropriate color seam sealer from the table below, or equivalent, apply a bead of sealant across the complete floor/front panel joint.



4539311

- Ensure the complete front joint is sealed, and allow to dry per manufacturer's recommendation.

Parts Information

Contact Kent Automotive at 1-888-YES-KENT or online at www.kent-automotive.com.

3M® products are available through your local 3M® distributor. Information about 3M® product retailers in your area may be obtained at 1-866-364-3577 or at <http://3mcollision.com/>.

Description	Vehicle Application	Part Number	Qty
Module, Kit F/Tank F/Pump	All	13595810	1
PLUG ASM, R/FLR PNL DRN HOLE	All	94535715	1
*Kent Automotive High-Tech™ Clear Seam Sealer	Painted Box	P10195	1
*3M™ Marine Grade Silicone Sealant Clear		08029	
*Kent DTM High Build (Black)	Spray-on Bedliner	KT 14999	
*3M™ Heavy Bodied Seam Sealer (Black)		08308	

*We believe this source and their products to be reliable. There may be additional manufacturers of such products/materials. General Motors does not endorse, indicate any preference for, or assume any responsibility for the products or material from this firm or for any such items that may be available from other sources.

Warranty Information

For vehicles repaired under warranty, use Labor Operation below and include material cost.

Labor Operation	Description	Labor Time
1480678*	Replace Fuel Pump Module, Seal Front Pickup Box Seam	1.5 hrs
*This is a unique Labor Operation for Bulletin use only.		

Version	1
Modified	

