



Service Bulletin

PRELIMINARY INFORMATION

Subject: No Start/ No Propulsion DTC P0A0C

Brand:	Model:	Model Year:		VIN:		Engine:	Transmission:
		from	to	from	to		
Chevrolet	Volt	2016	2017	All	All	L3A	MKV

Involved Region or Country	North America and
Additional RPO/s	L3A, MKA
Condition	Some customer may experience one or all of the following concerns: <ol style="list-style-type: none"> 1. No Start 2. Loss of propulsion while driving 3. Check Engine Lamp
Cause	After initial diagnosis the tech may find a current or history code P0A0C

Correction

Replace High Voltage Battery Disconnect Relay Assembly.

Service Procedure

If you experience this concern, please perform the follow inspection below

1. Disable the high voltage system
2. Remove the fuse cover from the front of the high voltage battery by following Document ID: 4176639
3. Locate the HVIL connector (See Photo Below)

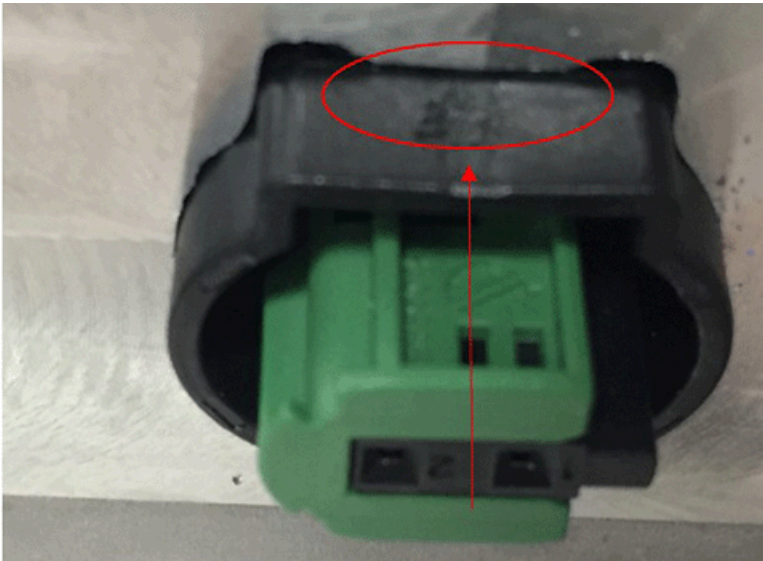


4. Make sure the connector is fully latched into the bulkhead. See pictures below of a good connection VS a poor connection
Good Connection, Latch can be seen from the outside and the bulk head teeth locks in the latch hole as designed

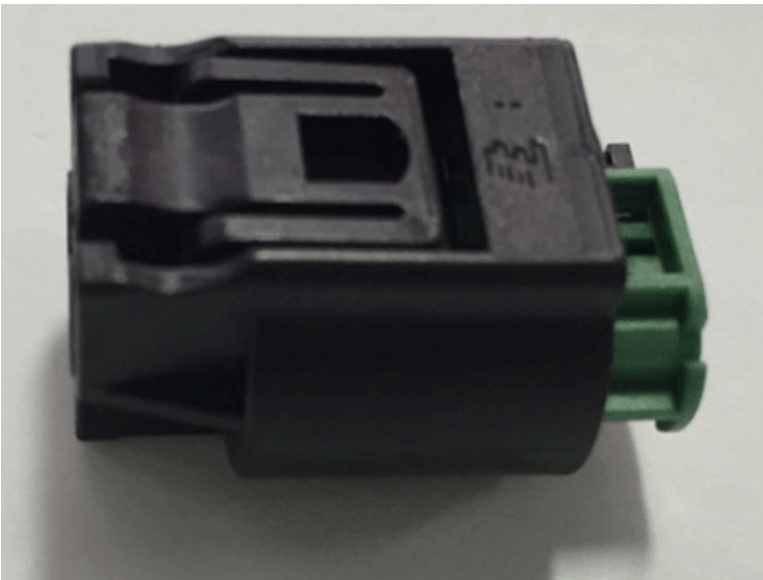


Poor Connection, Latch is deformed and not visible from outside. Connector is pushed back into the bulkhead.

Tip: If you lightly push on the HVIL connector and it falls inside the bulkhead. You have a poor connection



Picture of connector lock



5. If connection is poor, replace the high voltage battery disconnect relay assembly
6. If connection is ok, continue with normal diagnosis in Service Information.

Parts Information

Description	Part Number	Qty
High Voltage Battery Disconnect Relay Assembly	24279022	1

Note: Please contact the Technical Assistance Center to order this part as the part is on restriction. Please see current version of PIC6127 in Service Information for additional information.

Warranty Information

Labor Operation	Description	Labor Time
5031760	High Voltage Battery Disconnect Relay Replacement	Use Published Labor Operation Time

Version	1
Modified	

GM bulletins are intended for use by professional technicians, NOT a "do-it-yourselfer". They are written to inform these technicians of conditions that may occur on some vehicles, or to provide information that could assist in the proper service of a vehicle. Properly trained technicians have the equipment, tools, safety instructions, and know-how to do a job properly and safely. If a condition is described, DO NOT assume that the bulletin applies to your vehicle, or that your vehicle will have that condition. See your GM dealer for information on whether your vehicle may benefit from the information.



WE SUPPORT VOLUNTARY TECHNICIAN CERTIFICATION