



Service Bulletin

File in Section: -

Bulletin No.: PI1350

Date: November, 2014

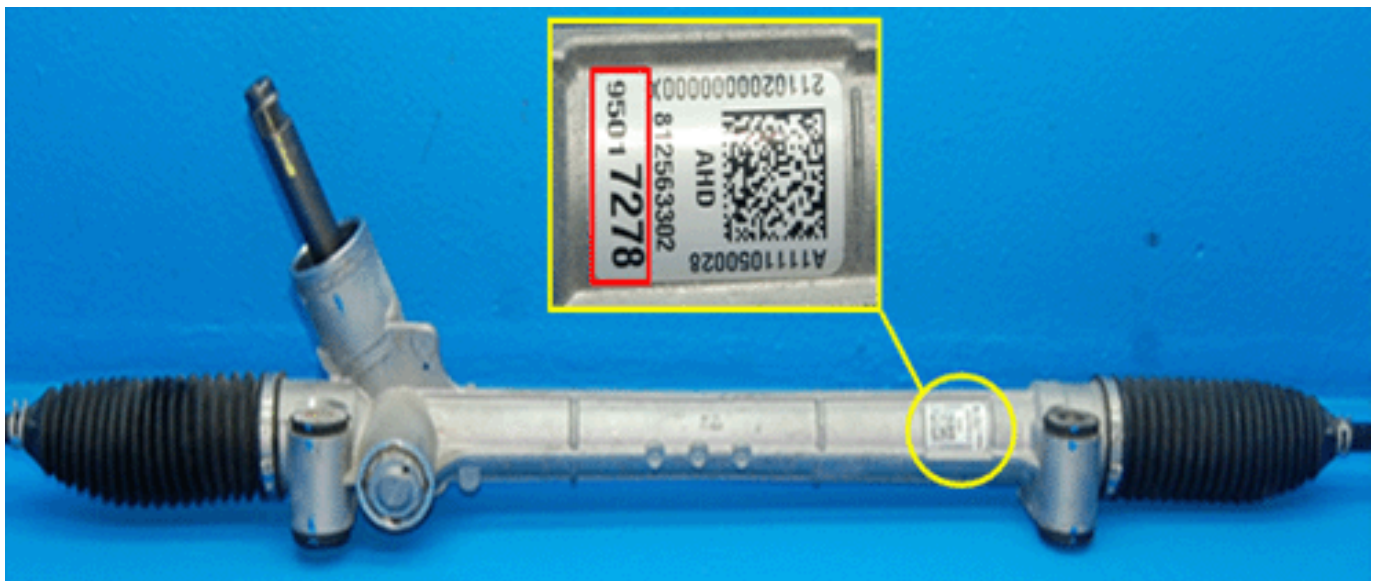
PRELIMINARY INFORMATION

Subject: Information on Electronic Power Steering (EPS) Calibrations for Steering Gear

Models: 2013-2014 Buick Encore
2012-2014 Chevrolet Sonic
2013-2014 Chevrolet Trax

New steering gears have been released recently and new EPS calibrations should be applied on it. Old steering gears should be combined with old EPS calibrations. For this reason, matching the steering gear with the EPS calibration is very important. Please follow the procedures below for preventing mismatching between hardware and software.

Replacing Steering Column



4003990

1. Lift the vehicle using a hoist and check the part number of the steering gear that is located on the area shown above.

Note: This steering gear part number will be used to define steering gear (old or new).

2. Reprogram the EPS. Refer to Power Steering Control Module Programming and Setup below.

Note: If you fill in the steering gear part number on SPS web page and then the operation software and calibration part number will be showed on SPS web page automatically.

3. Confirm and complete EPS reprogramming by finding the operation software part number and calibration part number using the Calibration table. If the operation software part number and calibration part number are not correct, please check the steering gear part number and try again. If the operation software part number and calibration part number are correct, reprogram the power steering control module.

Replacing Steering Gear



4003990

1. Lift the vehicle using a hoist and check the part number of the steering gear that is located on the area shown above.

Note: This steering gear part number will be used to define steering gear (old or new).

2. Reprogram the EPS. Refer to Power Steering Control Module Programming and Setup below.

Note: If you fill in the steering gear part number on SPS web page and then the operation part number and calibration part number will be showed on SPS web page automatically.

3. Confirm and complete EPS reprogramming by finding the operation software part number and calibration part number using the Calibration table. If the operation software part number and calibration part number are not correct, please check the steering gear part number and try again. If the operation software part number and calibration part number are correct, reprogram the power steering control module.

Calibration Table Instructions

1. Find the Steering Gear (Old or New) from the Gear part number listed in the Calibration table.

Note: If the steering gear part number is defined as "Old", Calibration and Operation software part number should be also selected in the "Old" column. And Vice versa; if "New" gear, Calibration and Operation software part number should be in the "New" column.

2. Define Vehicle Spec (Driver position/Trim level, Engine, Tire).
3. Find the exact calibration and operation software part number from the calibration table.
4. Confirm operating software and calibration part number on the SPS web and complete SPS programing.

Note: If you fill in part number of steering gear on SPS web, the SPS server will automatically find operating S/W and Calibration P/N. For the detail, refer to the following appendix.

Calibration Table

Region	Program	Steering Gear Part Number		Driver Position/Trim	Engine	Tire	Calibration Number		Operation Software					
		Old	New				Old	New						
North America	Sonic	95089639	95281008	LS/LT/LTZ/Dusk	-	15"	95182079	95363091	95492464					
		95089641			95281010	-	16", 17", 18"	95182080		95363092				
		95920016	RS	-		17"	95075324	95363093						
	Encore, Trax	95920017	95299727	-	1.4G Turbo	16"	95075901	95363049	95492464					
		95920018								95299728	1.4G Turbo	18"	95075902	95363050
		95089636												

Power Steering Control Module Programming and Setup

1. Connect an MDI to the vehicle and to the Techline PC.
2. Ensure that all power consuming devices are turned OFF on the vehicle.
3. From the TIS Home Page select "Service Programming System (SPS)" and follow the screen instructions.
4. Select "Start SPS" application and follow the on-screen instructions.
5. Select: "J2534 MDI" and "Reprogram ECU" then select "Next."
6. Follow the On Screen Instructions the select "Next."
7. Select Validate/Select Vehicle Data and click Next button.
8. Check VIN and click Next button.
9. Select SPS items.
 - 9.1. Select Controller: EPS.
 - 9.2. Select Function/Sequence: Programming.
 - 9.3. Select Programming Type: Normal.
10. Make sure Gear Part number and click Next button.
11. Confirm the software number and Click "Next."
12. When programming is completed, clear any DTCs.