

**ATTENTION:**

GENERAL MANAGER ☐  
 PARTS MANAGER ☐  
 CLAIMS PERSONNEL ☐  
 SERVICE MANAGER ☐

IMPORTANT - All  
 Service Personnel  
 Should Read and  
 Initial in the boxes  
 provided, right.




QUALITY DRIVEN® SERVICE

## SERVICE BULLETIN

**APPLICABILITY:** 2014-15 Forester Models

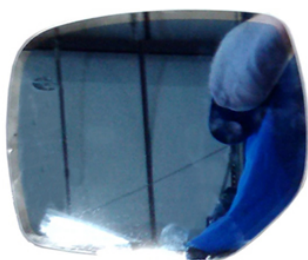
**NUMBER:** 15-173-14

**SUBJECT:** Exterior Auto Dim Mirrors with Approach Lighting

**DATE:** 05/16/14

### INTRODUCTION

There have been a limited number of cases where the appearance of the exterior Auto Dim mirror glass has changed to having a permanent dark blue or yellowish tint (sometimes also with a pattern) as shown in the example photos below.



The source of this condition has been traced to a short to ground in the interior Auto Dim mirror harness as a result of improper routing during installation. The interior Auto Dim mirror controls the dimming function of the 2 exterior mirrors. This short to ground may result in excessive voltage (more than 1.6v) being applied to the Auto Dim mirror circuit. The result is damage to both exterior mirrors as described above.

### PART INFORMATION

- **J201SSG000** Exterior Auto Dim Mirror Kit with Approach Lighting
- **H501SSG010** Interior Auto Dim Mirror wiring harness (with or without Homelink®)

### SERVICE PROCEDURE / INFORMATION

Remove the upper console / map light assembly by removing the 2 screws above the sunglasses holder and **CAREFULLY** releasing the 2 rear retaining clips using a plastic trim tool as shown below.



*Continued...*

**CAUTION: VEHICLE SERVICING PERFORMED BY UNTRAINED PERSONS COULD RESULT IN SERIOUS INJURY TO THOSE PERSONS OR TO OTHERS.**

Subaru Service Bulletins are intended for use by professional technicians ONLY. They are written to inform those technicians of conditions that may occur in some vehicles, or to provide information that could assist in the proper servicing of the vehicle. Properly trained technicians have the equipment, tools, safety instructions, and know-how to do the job correctly and safely. If a condition is described, DO NOT assume that this Service Bulletin applies to your vehicle, or that your vehicle will have that condition.

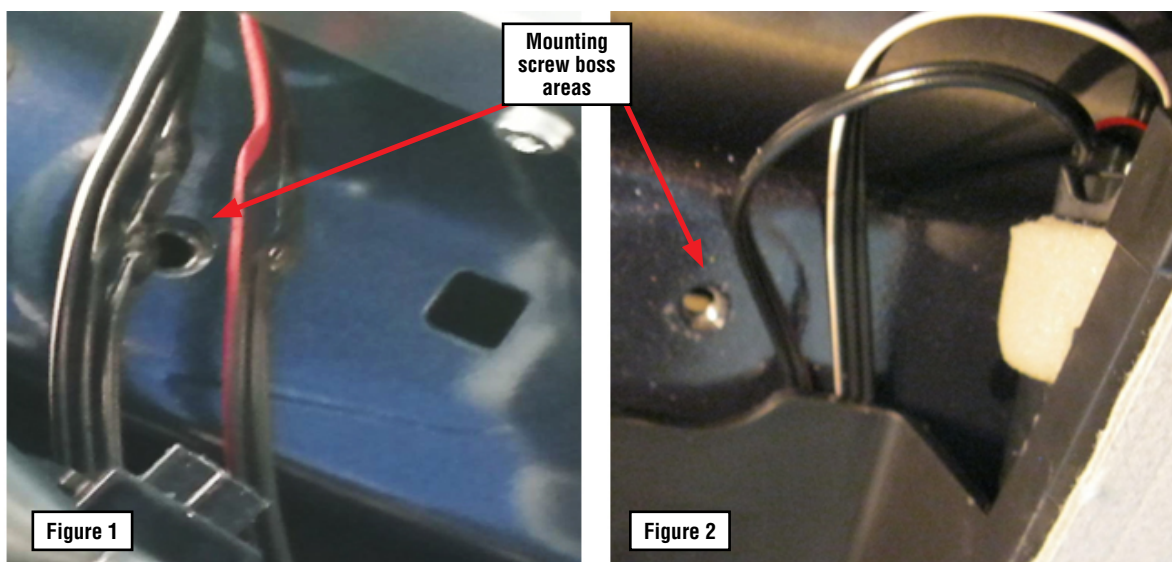
**SUBARU OF AMERICA, INC. IS "ISO 14001 COMPLIANT"**

The international standard for excellence in Environmental Management Systems. Please recycle or dispose of automotive products in a manner that is friendly to our environment and in accordance with all local, state and federal laws and regulations.

Once the upper console / map light assembly is removed, **CAREFULLY** disconnect the map light (and if equipped, sunroof switch) harness connectors as shown below then set it aside in a safe place.



**Figure 1** below shows a damaged (pinched) wiring harness. **Figure 2** shows how the Auto Dim mirror harness should **NOT** be routed.

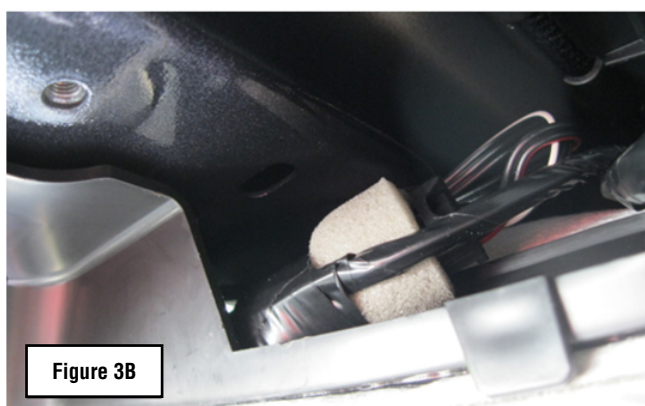
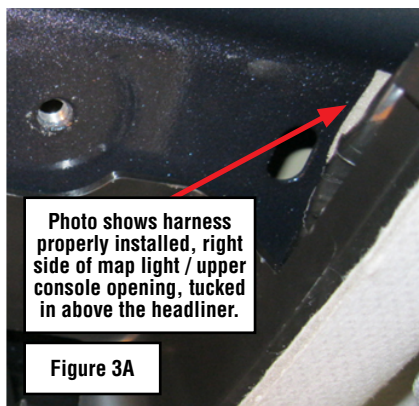


If after removing the upper console / map light assembly, harness damage is confirmed, replace the interior Auto Dim Mirror w/Compass wiring harness. Repairing this harness is **not** recommended. **REMINDER:** Always confirm any part numbers being ordered are the most up-to-date. Install the new replacement wiring harness. It must be routed as to not interfere with either of the 2 map light assembly mounting screw boss areas or any other potential harness pinch area (e.g. clips, metal brackets, etc...) then tucked above the headliner as shown in **Figures 3A and 3B** on the next page.

**NOTE:** Do not reinstall the upper console at this point as additional circuit testing is required.

*Continued...*





After installation of the new mirror harness, remove both damaged exterior Auto Dim mirror glass assemblies following the procedure shown in the Accessory Installation Guide accessible on STIS.

**SUBARU**

**Technical Information System**

[Information](#)
[Online Reference](#)
[Service Diagnostics](#)
[Login / My Account](#)
Logged in as Dealer/Subaru

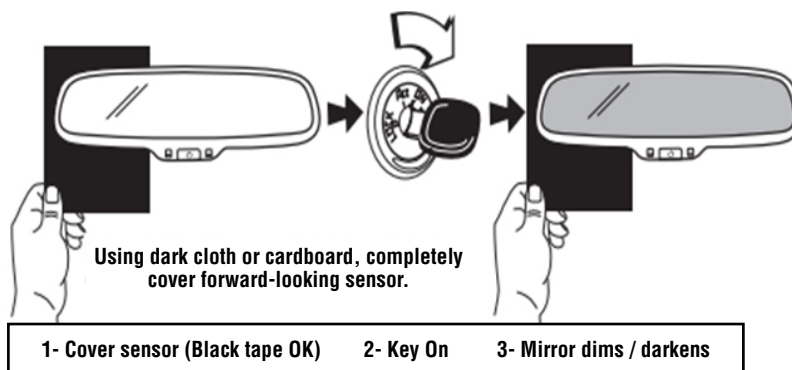
Current search criteria... [\[Back to Search Page\]](#)  
**Accessory Installation Guide, all vehicles** using Keywords: 2014 Forester Exterior a [Search Again](#)

Item Code	Title	Actions
J201SSG000	2014 Forester Exterior auto dimming mirror with approach lighting <a href="#">[free]</a> <a href="#">[Description...]</a>	<a href="#">[View PDF]</a>

**NOTE:** It is recommended to download and print the .pdf of this procedure then read through it in its entirety before proceeding further as there are 18 steps to complete the mirror glass assembly replacement.

After removal of both exterior Auto Dim mirror glass assemblies, both exterior mirror circuits will need to be tested to ensure that no other concerns are present which could affect the operation of the new replacement parts.

Activate the interior Auto Dim mirror by covering the forward-facing sensor while the key is in the ON or RUN position as shown in the illustrations below.



Perform the following voltage tests on **BOTH** exterior mirror harness connectors before installing the new Auto Dim mirror glass assemblies. With the interior Auto Dim mirror in the dimmed state, connect a DVOM set to read DC voltage. Confirm the voltage at **BOTH** of the Auto Dim circuit exterior mirror 2-pin harness connectors does not exceed 1.6v as shown in the photo below. If the required voltage is not present or if another electrical concern is found to exist, diagnose and repair it before proceeding.

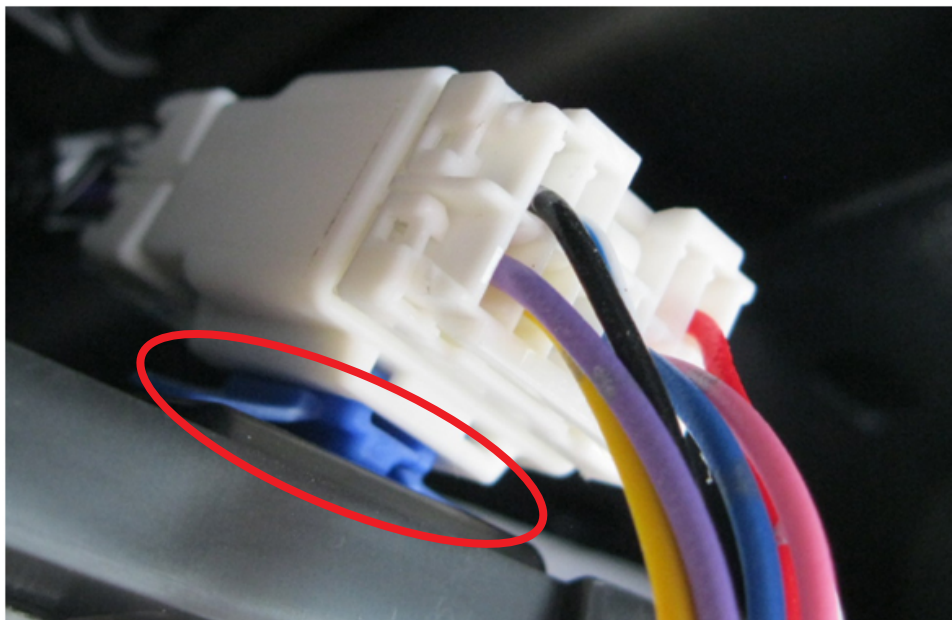
*Continued...*



Once the Auto Dim circuit voltage is verified as acceptable, replace both exterior Auto Dim mirror glass assemblies following the procedure in the Accessory Installation Guide referenced above.

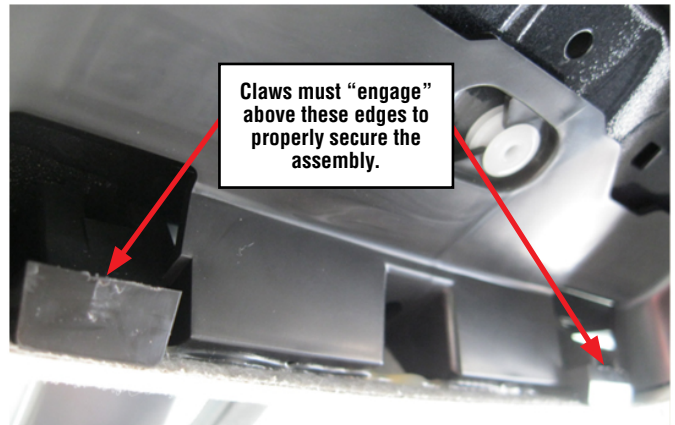
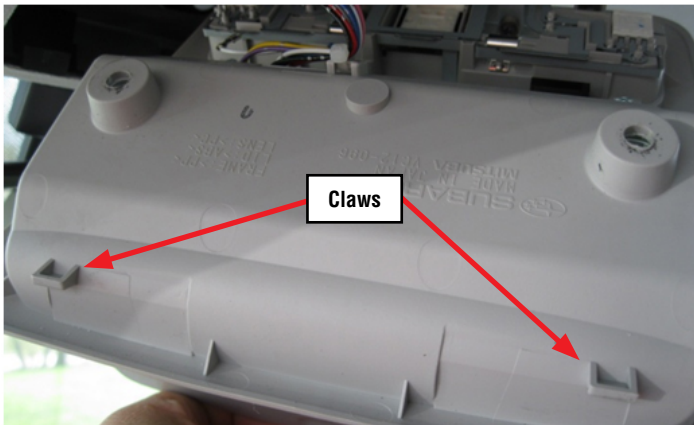
Reinstall the upper console / map light assembly in reverse order of removal paying close attention to the following precautions:

- Refer to figures **3A** and **3B** above and do a final check for proper positioning of the new Auto Dim mirror harness.
- Reconnect the wire harness connector for the map lights and, if equipped with a sunroof, confirm the 6-wire harness connector is properly fitted onto its (blue) retainer as shown below.



*Continued...*

- Make sure the upper console / map light assembly's retaining claws engage above the support properly to retain the front edge **before** reattaching the 2 rear edge retaining clips and the 2 mounting screws as shown below.



- Confirm proper operation of all 3 Auto Dim mirrors to complete procedure.

#### WARRANTY / CLAIM INFORMATION

For vehicles within the Basic New Car Limited Warranty period, this repair may be claimed using the following information:

LABOR DESCRIPTION	LABOR OPERATION #	FAIL CODE	LABOR TIME
EXTERIOR AUTO DIMMING MIRROR REPAIR	A063-804	ZPV-38	0.5