

WF62 Re-coding Instrument Cluster (Workshop Campaign)

Important: **CRITICAL WARNING** - This campaign includes steps where control unit(s) in the vehicle will be programmed with the PIWIS Tester. The vehicle voltage must be maintained between 13.5 volts and 14.5 volts during this programming. Failure to maintain this voltage could result in damaged control unit(s). Damage caused by inadequate voltage during programming is not a warrantable defect. The technician must verify the actual vehicle voltage in the PIWIS Tester before starting the campaign and also document the actual voltage on the repair order. Please refer to Equipment Information EQ1401 for a list of suitable battery chargers/power supplies which should be used to maintain vehicle voltage.

Model Year: As of 2015 up to 2016

Vehicle Type: **Boxster (981)/Boxster S (981)/Boxster GTS (981)**
Cayman (981)/Cayman S (981)/Cayman GTS (981)

Equipment:

- 20-inch Carrera S wheel (I-no. 423)
- 20-inch Carrera Classic wheel (I-no. 427)
- 20-inch 911 Turbo wheel (I-no. 429)
- 20-inch SportTechno wheel (I-no. XRT)

Concerns: **Comfort tire pressure for 20-inch wheels on the rear axle**

Information: This is to inform you of a voluntary Workshop Campaign on the above-mentioned vehicles. **The nominal value for the comfort tire pressure on the rear axle was coded 7 psi (0.5 bar) too high in the instrument cluster on the affected vehicles due to an error in the coding rule.**

As a result, when the "Comfort pressure" function is selected, the driver is prompted to adapt the tire pressure to the nominal value, which is too high, instead of reducing the tire pressure to the correct comfort tire pressure for greater comfort.

Action Re-code instrument cluster.

Required:



Information

When the instrument cluster is re-coded, the **individual settings** implemented in the instrument cluster by the customer will be **lost** and are reset to the **default values** of the **country version** that applies to the vehicle.

After carrying out the campaign, therefore, please inform your customers that personal settings they have implemented in the instrument cluster will have to be **set again** and provide them with any **help and support** they need for setting the relevant options.

This affects the following settings in the Vehicle menu, for example:

- Lowering of exterior mirror on passenger's side during parking manoeuvres

- Locking settings
- Light & Visibility settings
- Units (kilometers/miles, Celsius/Fahrenheit, ...)
- Language

Affected Vehicles: The VIN(s) can be checked by using PIWIS Vehicle Information link to verify if the campaign affects the vehicle. This campaign is scope specific to the VIN! Failure to verify in PIWIS may result in an improper repair. This campaign affects 1,352 vehicles in North America.

Tools:

- **9818 - PIWIS Tester II** with PIWIS Tester test software version **15.800.000** (or higher) installed.
- Battery charger with a current rating of **at least 70 A**, e.g. **VAS 5907 - Battery charger 70A**

Claim Submission: See Attachment "A".

Preliminary work

NOTICE

Coding will be aborted in the event of low voltage.

- **Increased current draw during diagnosis can cause a drop in voltage, which can result in one or more fault entries and the abnormal termination of the coding process.**
- ⇒ **Before commencing work, connect a suitable battery charge or power supply - suitable for AGM Type batteries, recommended current rating of 70A fixed voltage 13.5V to 14.5V to the jump-start terminals in the engine compartment.**

NOTICE

Coding will be aborted if the Internet connection is unstable.

- **An unstable Internet connection can interrupt communication between PIWIS Tester II and the vehicle communication module (VCI). As a result, coding may be aborted.**
- ⇒ **During control unit programming, always connect PIWIS Tester II to the vehicle communication module (VCI) via the USB cable.**

NOTICE

Control unit coding will be aborted if the vehicle key is not recognized

- **If the vehicle key is not recognized in vehicles with Porsche Entry & Drive, coding cannot be started or will be interrupted.**
- ⇒ **Switch on the ignition using the original vehicle key. To do this, replace the dummy key in the ignition lock with the original vehicle key if necessary.**

Work Procedure: 1 Connect a battery charger with a current rating of **at least 70 A**.

First connect the positive cable of the charger to the positive terminal of the battery and then connect the negative cable of the charger to the ground point for jump-lead starting ⇒ *External power connection*.

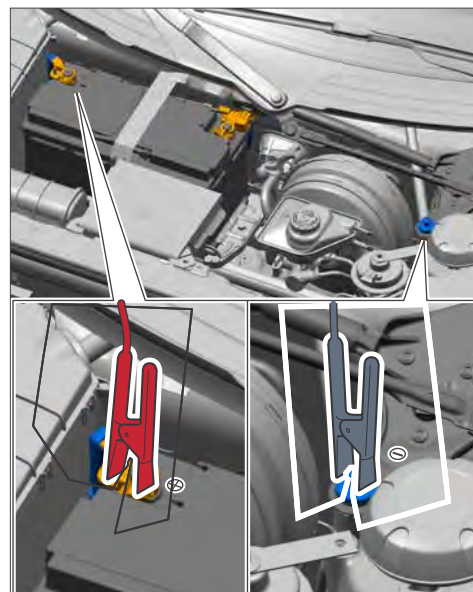
2 Switch on the ignition using the **original driver's key**.

To do this, replace the control unit in the ignition lock with the original driver's key if necessary.

3 **9818 - PIWIS Tester II** with software version **15.800.000** (or higher) installed must be connected to the vehicle communication module (VCI) via the **USB cable**. Then, connect the communication module to the vehicle and switch on the PIWIS Tester.

4 On the PIWIS Tester start screen, call up the ⇒ **'Diagnostics'** menu and select the vehicle type ⇒ **'Boxster/Cayman' ⇒ '981'**.

The diagnostic application is then started and the control unit selection screen is populated.



External power connection

Re-coding instrument cluster



Information

The procedure described here is based on the PIWIS Tester II test software version **15.800.000**.

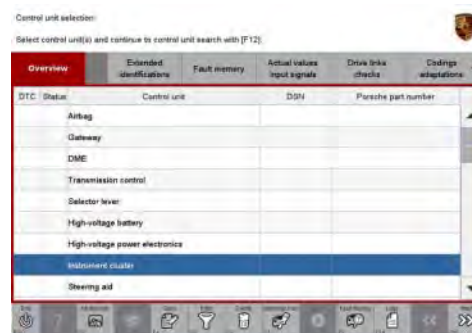
The PIWIS Tester instructions take precedence and in the event of a discrepancy, these are the instructions that must be followed.

A discrepancy may arise with later software versions for example.

Work Procedure: 1 Select ⇒ **'Instrument cluster'** in the control unit selection screen (⇒ **'Overview'** menu) and press **•>>** to confirm your selection ⇒ *Control unit selection – Instrument cluster*.

2 When the question “Create Vehicle Analysis Log (VAL)?” appears, either press **•F12** to create a VAL or press **•F11** if you do not want to create a VAL.

3 Press **•>>** to acknowledge the message informing you that campaigns for the vehicle are stored in the PIWIS information system.



Control unit selection – Instrument cluster

- 4 Once the instrument cluster has been found and is displayed in the overview, select the ⇒ **'Codings/adaptations'** menu.
- 5 Select the ⇒ **'Automatic coding'** function and press •>>" to start coding ⇒ *Instrument cluster - Automatic coding*.

*Instrument cluster - Automatic coding*

- 6 When coding is complete, the message "Coding has been completed successfully" is displayed and a tick appears in the 'Status' box ⇒ *Coding successful*.
If coding is not completed successfully (error message "Coding was not completed successfully"), coding must be **repeated**.
- 7 Once coding has been completed successfully, press •>>" to return to the start page of the ⇒ **'Codings/adaptations'** menu.

*Coding successful*

- 8 Select the ⇒ **'Overview'** menu and press •<<" to return to the control unit selection screen.

Subsequent work

- Work Procedure: 1 Switch off ignition.
- 2 Disconnect the PIWIS Tester from the vehicle.
 - 3 Switch off and disconnect the battery charger.
 - 4 On vehicles with Porsche Entry & Drive, replace the original driver's key in the ignition lock with the control unit again.
 - 5 Enter the workshop campaign in the Warranty and Maintenance booklet.

Attachment "A"

Claim Submission - Workshop Campaign WF62
Warranty claims should be submitted via WWS/PQIS.

Open campaigns may be checked by using either the PIWIS Vehicle Information system or through PQIS Job Creation.
 Labor, parts, and sublet will be automatically inserted when Technician is selected in WWS/PQIS. If necessary, the required part numbers will need to be manually entered into warranty system by the dealer administrator.

Scope:

Working time:

Re-coding instrument cluster Labor time: **16 TU**

Includes: Connecting and disconnecting battery charger
 Connecting and disconnecting PIWIS Tester

⇒ Damage code WF62 066 000 1

Important Notice: Technical Bulletins issued by Porsche Cars North America, Inc. are intended only for use by professional automotive technicians who have attended Porsche service training courses. They are written to inform those technicians of conditions that may occur on some Porsche vehicles, or to provide information that could assist in the proper servicing of a vehicle. Porsche special tools may be necessary in order to perform certain operations identified in these bulletins. Use of tools and procedures other than those Porsche recommends in these bulletins may be detrimental to the safe operation of your vehicle, and may endanger the people working on it. Properly trained Porsche technicians have the equipment, tools, safety instructions, and know-how to do the job properly and safely. If a particular condition is described, do not assume that the bulletin applies to your vehicle, or that your vehicle will have that condition. See your authorized Porsche Dealer for the latest information about whether a particular technical bulletin applies to your vehicle. Part numbers listed in these bulletins are for reference only. Always check with your authorized Porsche dealer to verify the current and correct part numbers. The work procedures updated electronically in the Porsche PIWIS diagnostic and testing device take precedence and, in the event of a discrepancy, the work procedures in the PIWIS Tester are the ones that must be followed.

© Porsche Cars North America, Inc.

Dealership	Service Manager	Shop Foreman	Service Technician
Distribution	Asst. Manager	Warranty Admin.	Service Technician
Routing			

Dr. Ing. h.c. F. Porsche AG is the owner of numerous trademarks, both registered and unregistered, including without limitation the Porsche Crest®, Porsche®, Boxster®, Carrera®, Cayenne®, Cayman®, Macan®, Panamera®, Speedster®, Spyder®, 918 Spyder®, Tiptronic®, VarioCam®, PCM®, PDK®, 911®, RS®, 4S®, FOUR, UNCOMPROMISED®, and the model numbers and the distinctive shapes of the Porsche automobiles such as, the federally registered 911 and Boxster automobiles. The third party trademarks contained herein are the properties of their respective owners. Porsche Cars North America, Inc. believes the specifications to be correct at the time of printing. Specifications, performance standards, standard equipment, options, and other elements shown are subject to change without notice. Some options may be unavailable when a car is built. Some vehicles may be shown with non-U.S. equipment. The information contained herein is for internal authorized Porsche dealer use only and cannot be copied or distributed. Porsche recommends seat belt usage and observance of traffic laws at all times.

Printed in the USA