

# WORK DESCRIPTION FOR FIELD MEASURE

Code: 22P3290105

Version: 2.0

**Check upper transverse control arm of front axle on left and right, replace upper transverse control arm if necessary**

Model 167

## Check/test procedure

1. Remove left and right front wheel and tire assembly.  
**i** For basic data, see AR40.10-P-1102ME
2. Remove nut (2, Figure 1) at upper transverse control arm (1, Figure 1).  
**i** For basic data, see AR33.20-P-0500ME

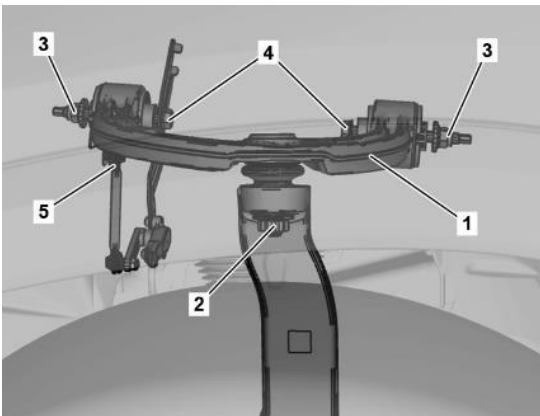


Figure 1

3. Check spherical cap in area (A, Figure 2).  
**i** clean area. Do not damage air bellows while doing this.

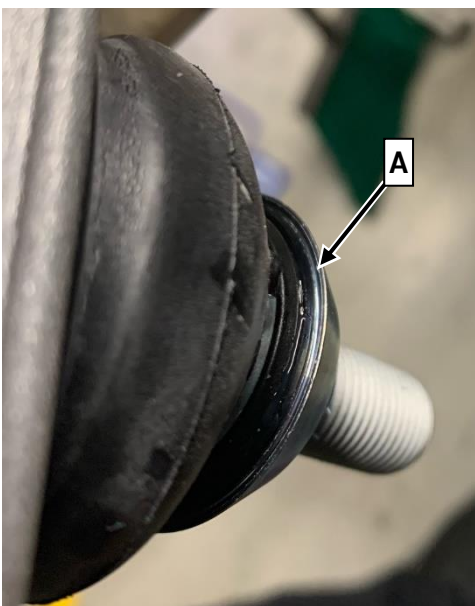


Figure 2

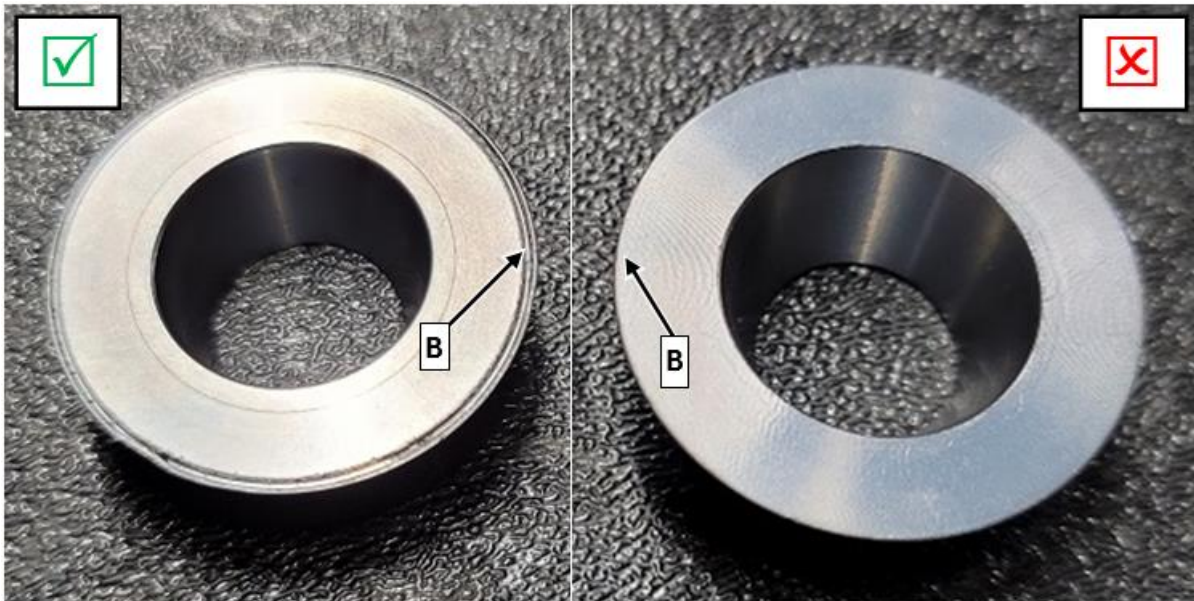


Figure 3

- a. If groove (B, Figure 2 or 3) is **not** present : **Carry out work procedure .**
- b. If groove (B, Figure 2 or 3) is present:**End measure.**

**Work procedure**

1. Replace upper transverse control arm (1, Figure 1).  
i For basic data, see AR33.20-P-0500ME.

2. Assemble in reverse order.

**Parts**

Quantity	Designation	Part no.
As required	Upper transverse control arm	*

\* The required transverse control arm must be determined via the parts job in the XENTRY Portal for the vehicle identification number

i Small parts such as **screws, lock nuts**, sealing rings, cable ties, fluids, sealant, etc. are not listed in the parts list. The required small parts are taken into account in the budgeting.

**Operation text and flat rate**

Operation no.	Operation text	Flat rate	Accounting no./ damage code
12-1655	Check upper transverse control arm on left and right of front axle	1.0 h	32 901 05
12-1656	Replace upper transverse control arm of front axle (after check)	4.3 h	32 901 05

Mercedes-Benz  
 Global Service & Parts