

# WORK DESCRIPTION FOR FIELD MEASURE

Code: 22P9790021

Version: 2.1

## Check seam seal in left front wheel arch, rework if necessary

Model 295

**Modification note:** Part number Seam seal adjusted in parts table

### Check/test procedure A

1. Remove left front fender liner rear section.  
**i** For basic data, see AR88.10-P-1301EQE.
2. Check seam seal in left front wheel arch.  
**i** Seam seal must be full-length (without interruptions).

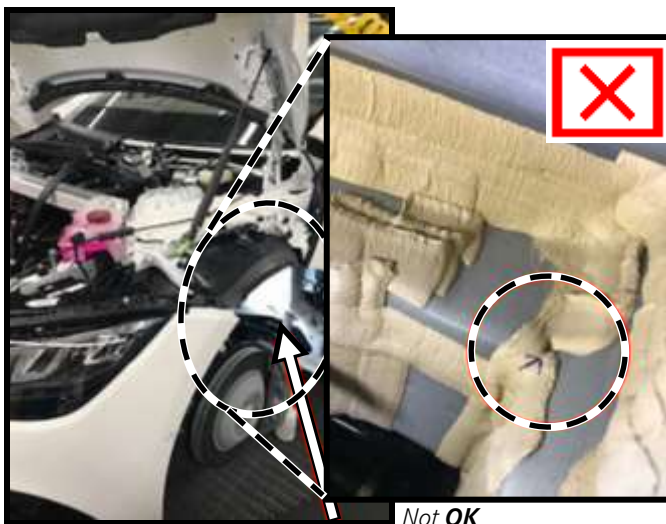


Figure 1

- a. **Seam seal** in left front wheel arch **not OK**: Perform **check/test procedure B**.
- b. **Seam seal** in left front wheel arch **OK**: **End measure**.

### Check/test procedure B

1. Check whether moisture is present in left front floor covering in crossmember area of firewall and in adjacent footwell.  
**i** Expose left front floor covering until area is accessible.
  - 1.1. Slide left front seat toward rear.
  - 1.2. Remove left front door sill.  
**i** For basic data, see AR68.30-P-4100EQS.

1.3. Remove lower trim for left instrument panel.

**i** For basic data, see AR68.10-P-1501EQS.

1.4. Lift left front floor covering and check for moisture.

**i** Floor covering does not have to be fully removed.



- a. Left front floor covering shows **no** moisture: Perform **work procedure A**.
- b. Left front floor covering **shows** moisture: Perform **work procedure A and B**.

**Work procedure A**

1. Rework seam seal in left front wheel arch.

**i** Seam seal must be full-length (without interruptions).

2. Assemble in reverse order.

**Work procedure B**

1. Eliminate moisture in driver footwell.

2. Assemble in reverse order

**Parts**

Quantity	Designation	Part no.
As required (1)*	Seam seal	A 005 989 63 20 11 9678

\* The container must be used for approx. 10 vehicles!

**i** Small parts such as screws/bolts, lock nuts, sealing rings, cable ties, fluids, sealant, etc. are not listed in the parts list. The required small parts are taken into account in the budgeting.

**Operation text and flat rate**

Operation no.	Operation text	Flat rate	Accounting no./ damage code
12-1512	Check seam seal in left front wheel arch <b>Includes:</b> Remove/install left front fender liner rear section	0.6 h	97 900 21
12-1513	Check left front floor covering (after check/test procedure A) <b>Includes:</b> Remove/install left front door sill; remove/install lower trim for left instrument panel; expose left front floor covering	0.6 h	97 900 21
12-1514	Rework seam seal in left front wheel arch (after check)	0.1 h	97 900 21
12-1515	Eliminate moisture in driver footwell (after check)	Time prescribed by foreperson	97 900 21