



# SERVICE BULLETIN

Classification:

EC13-012c

Reference:

NTB13-100c

Date:

August 25, 2016

## VERSA SEDAN AND VERSA NOTE; ENGINE TURNS OFF OR HESITATES WHEN ACCELERATING FROM A STOP DURING HOT AMBIENT TEMPERATURES (+100°F)

This bulletin has been amended. The **APPLIED VEHICLES** and **IF YOU CONFIRM** sections, as well as Table A on page 5 have been revised. Please discard all previous versions.

**APPLIED VEHICLES:** 2012-2016 Versa Sedan (N17)  
2014-2016 Versa Note (E12)

### IF YOU CONFIRM

The engine turns OFF or hesitates when accelerating from a stop during hot ambient temperatures (+100°F),

### AND

The engine is able to be restarted.

### ACTION

1. Refer to step 6 in the **SERVICE PROCEDURE** to see if this bulletin applies to the vehicle you are working on.
2. If this bulletin applies, reprogram the ECM.
3. For 2013 Versa Sedan only: If ECM reprogramming applies, determine if TCM reprogramming also applies.
  - Refer to page 6 in the **SERVICE PROCEDURE**.

**IMPORTANT:** The purpose of **ACTION** (above) is to give you a quick idea of the work you will be performing. You **MUST** closely follow the entire **SERVICE PROCEDURE** as it contains information that is essential to successfully completing this repair.

Nissan Bulletins are intended for use by qualified technicians, not 'do-it-yourselfers'. Qualified technicians are properly trained individuals who have the equipment, tools, safety instruction, and know-how to do a job properly and safely. NOTE: If you believe that a described condition may apply to a particular vehicle, DO NOT assume that it does. See your Nissan dealer to determine if this applies to your vehicle.

## SERVICE PROCEDURE

### NOTE:

- For 2013 Versa Sedan only: This procedure may require reprogramming of the **ECM and TCM** which means most steps in this procedure may need to be done twice.
- Most instructions for reprogramming with CONSULT-III plus (C-III plus) are displayed on the CONSULT PC screen.
- If you are not familiar with the reprogramming procedure, click here. This will link you to the "CONSULT- III plus (C-III plus) Reprogramming" general procedure.
- Take the vehicle for a 10 minute drive in order to meet the following Idle Air Volume Learn (IAVL) conditions:
  - Engine coolant temperature: 70 -100°C (158 -212°F)
  - Battery voltage: More than 12.9V (At idle)
  - Transmission: Warmed up



Figure A

- After reprogramming is complete, you will be required to perform Throttle Valve Closed Position, Idle Air Volume Learn, Accelerator Closed Position, and DTC erase.

### CAUTION:

- Connect the GR8 to the 12V battery and select ECM Power Supply Mode. If the vehicle battery voltage drops below 12.0V or rises above 15.5V during reprogramming, the ECM may be damaged.
- Be sure to turn OFF all vehicle electrical loads. If a vehicle electrical load remains ON, the ECM may be damaged.
- Be sure to connect the AC Adapter. If the CONSULT PC battery voltage drops during reprogramming, the process will be interrupted and the ECM may be damaged.
- Turn off all external Bluetooth® devices (e.g., cell phones, printers, etc.) within range of the CONSULT PC and the VI. If Bluetooth® signal waves are within range of the CONSULT PC during reprogramming, reprogramming may be interrupted and the ECM may be damaged.

1. Connect the CONSULT PC to the vehicle to begin the reprogramming procedure.
2. Open / Start C-III plus.
3. Wait for the plus VI to be recognized.
  - Serial number will display when the plus VI is recognized.
4. Select **Re/programming, Configuration**.

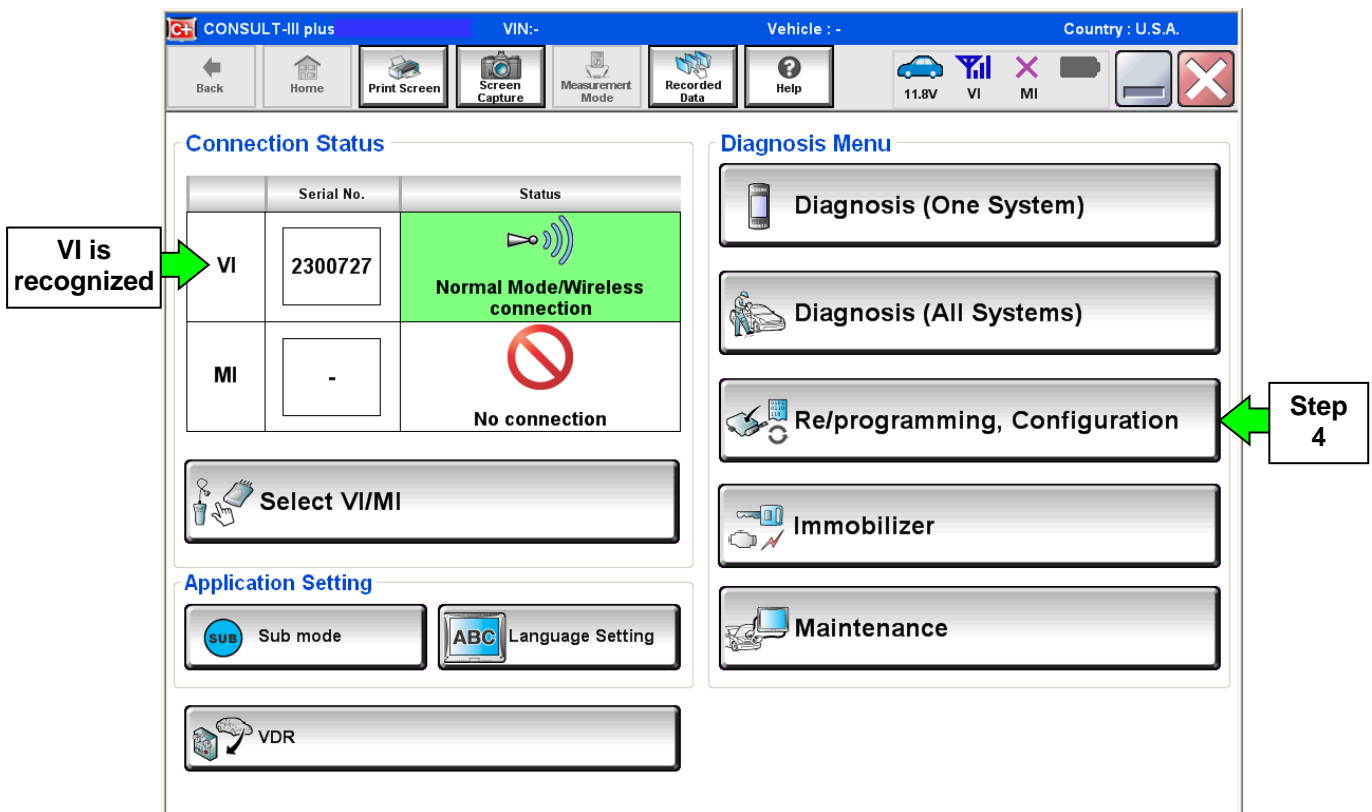


Figure 1

5. Follow the on-screen instructions and navigate the C-III plus to the screen shown in Figure 2 on the next page.

6. When you get to the screen shown in Figure 2, confirm this bulletin applies as follows:
- A. Find the ECM **Part Number** and write it on the repair order.

**NOTE:** This is the current ECM Part Number (P/N).

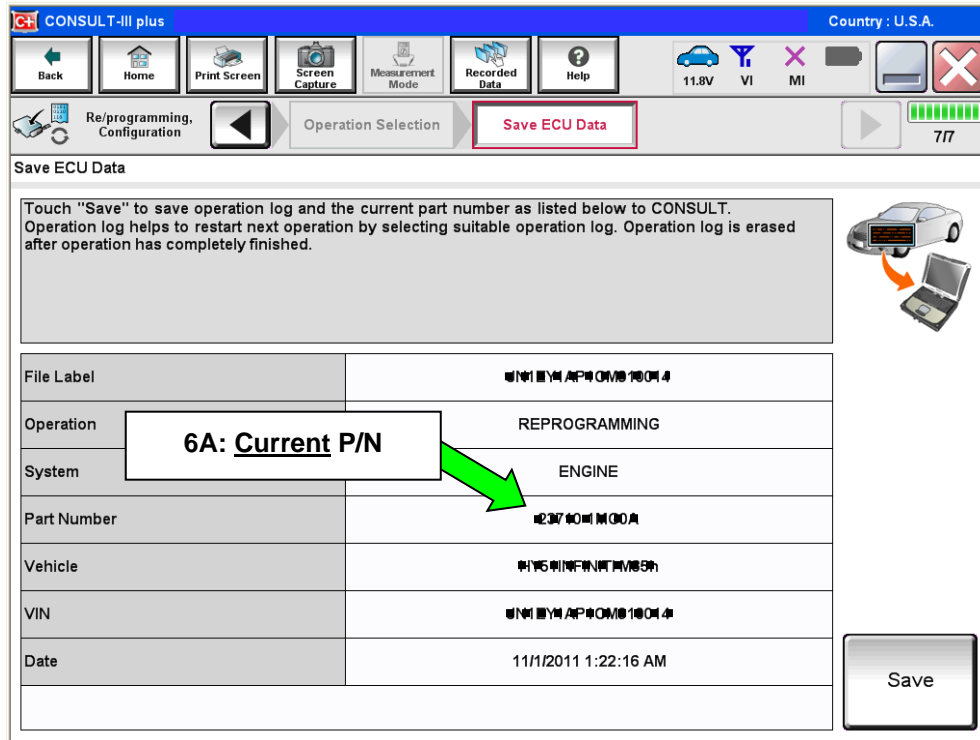


Figure 2

- B. Compare the P/N you wrote down to the numbers in the **Current ECM Part Number** column in **Table A** on the next page.
- If there is an ECM P/N match, this bulletin applies. Continue with the ECM reprogramming procedure.
  - If there is not an ECM P/N match, this bulletin does not apply.

**Table A**

<b>MODEL</b>	<b>MODEL YEAR</b>	<b>CURRENT <u>ECM</u> P/N: 23710-</b>
<b>Versa Sedan</b>	2012	3AB2A, 3AB2D, 3AB2E, 3AB3A, 3AB3D, 3AB3E 3AB4A, 3AB4D, 3AB4E, 3AB9A, 3AB9B
	2013	9KA0B, 9KA1B, 9KA1C, 9KA2B, 9KA2C, 9KA3B, 9KA3C
	2014	9KF0A, 9KF0B, 9KF1A, 9KF1B 9KF2A, 9KF3A
	2015	9KE0A, 9KE0B, 9KE0C 9KE1A, 9KE1B, 9KE1C, 9KE1D 9KE2A, 9KE2B, 9KE2D, 9KE2E
	2016	9KN0A, 9KN0B, 9KN0C 9KN1A, 9KN1B, 9KN1C 9KN2A, 9KN2B, 9KN2C
<b>Versa Note</b>	2014	3VB1B, 3VB2B, 3VB3B, 3VB4B 3VB5B, 3VB5C
	2015	9MB0A, 9MB0B 9MB1A, 9MB1B 9MB2A, 9MB2C, 9MB2D 9MB3A, 9MB3C, 9MB3D 9MB4A, 9MB4C, 9MB4D 9MB5A, 9MB5C, 9MB5D
	2016	9MD0A, 9MD0B, 9MD0C 9MD1A, 9MD1B, 9MD1C 9MD2A, 9MD2B, 9MD2C 9MD3A, 9MD3B, 9MD3C 9MD4A, 9MD4B, 9MD4C 9MD5A, 9MD5B, 9MD5C

**See the next page for 2013 Versa Sedan.**

**For 2013 Versa Sedan with CVT only:**

If ECM reprogramming applies, you may need to perform **TCM reprogramming**.

1. If ECM reprogramming is needed, complete it first.
2. When ECM reprogramming is complete, restart the reprogramming process for the TCM.
3. When you get to step 6 on page 4, confirm TCM reprogramming is needed as follows:  
**NOTE:** The screen in Figure 2 on page 4 will be similar for TCM reprogramming.

- A. Find the **TCM Part Number** and write it on the repair order.
- B. Compare the P/N you wrote down to the number in the **Current TCM Part Number** column in **Table B**, below.
  - If there is a TCM P/N match, continue with TCM reprogramming procedure.
  - If there is not a TCM P/N match, this procedure is complete.

**Table B**

<b>MODEL</b>	<b>MODEL YEAR</b>	<b>CURRENT <u>TCM</u> P/N: 31036-</b>
<b>Versa Sedan</b>	2013	9KB1B, 9KB1C

7. Follow the on-screen instructions to navigate C-III plus and reprogram the ECM.

**NOTE:**

- In some cases, more than one new P/N for reprogramming is available.
  - In this case, the screen in Figure 3 displays.
  - Select and use the reprogramming option that **does not** have the message “Caution! Use ONLY with NTBXX-XXX”.
- If you get this screen and it is blank (no reprogramming listed), it means there is no reprogramming available for this vehicle. Close C-III plus and refer back to ASIST for further diagnosis.

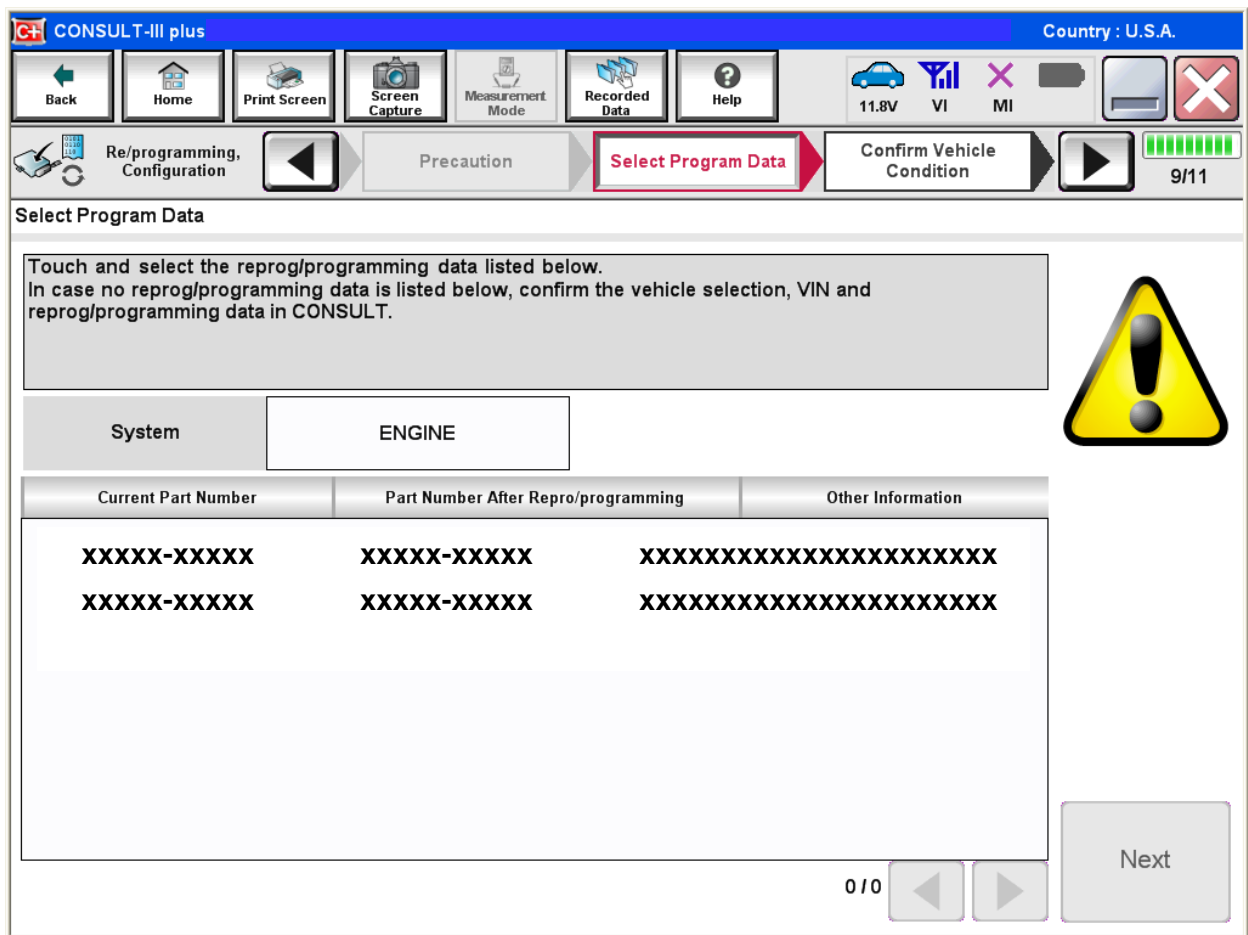


Figure 3

8. When the screen in Figure 4 displays, reprogramming is complete.

**NOTE:** If the screen in Figure 4 does not display (reprogramming does not complete), refer to the information on the next page.

9. Disconnect the battery charger from the vehicle.

10. Select **Next**.

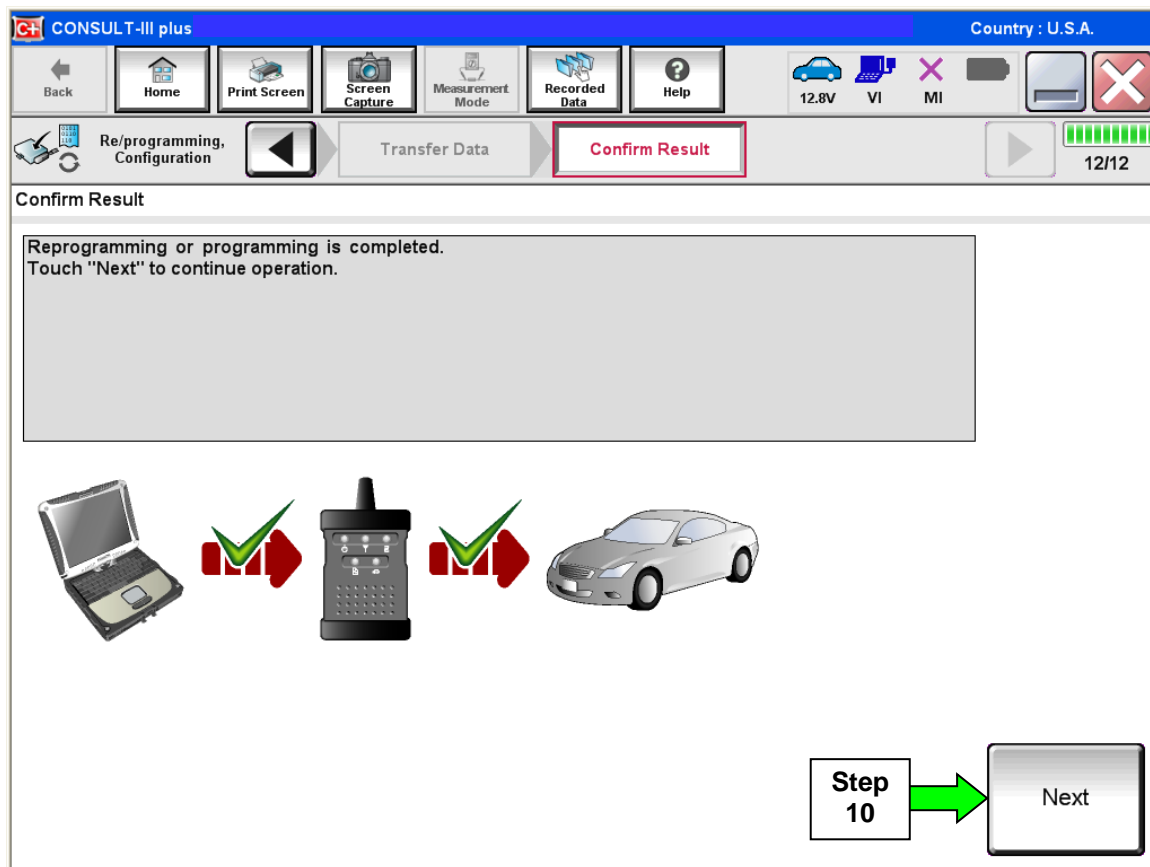


Figure 4

**NOTE:**

- In the next steps (page 10), you will perform Throttle Valve Closed Position, Idle Air Volume Learn, Accelerator Closed Position, and DTC erase.
- These operations are required before C-III plus will provide the final reprogramming confirmation report.



## ECM Recovery

**Do not disconnect plus VI or shut down C-III plus if reprogramming does not complete.**

If reprogramming does not complete and the “!?” icon displays as shown in Figure 5:

- Check battery voltage (12.0–15.5 V).
- Ignition is ON, engine OFF.
- External Bluetooth® devices are OFF.
- All electrical loads are OFF.
- **Select retry and follow the on screen instructions.**
- “Retry” may not go through on first attempt and can be selected more than once.

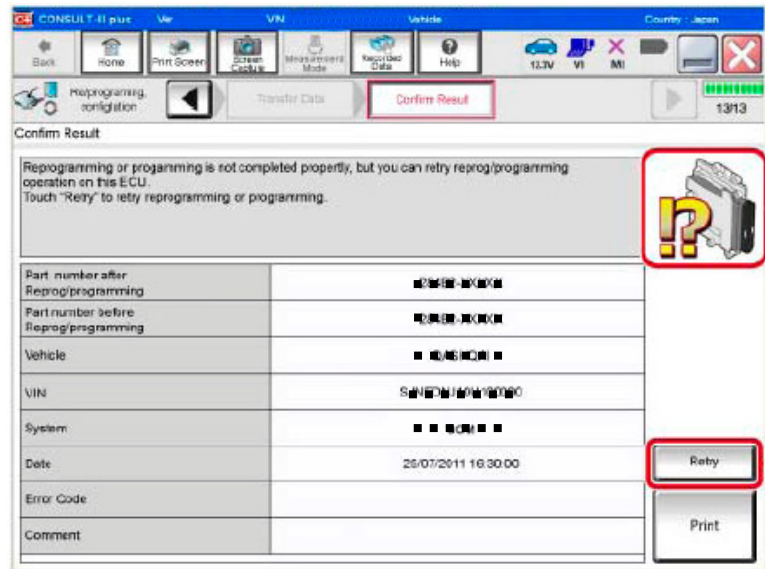


Figure 5

If reprogramming does not complete and the “X” icon displays as shown in Figure 6:

- Check battery voltage (12.0 – 15.5 V).
- CONSULT A/C adapter is plugged in.
- Ignition is ON, engine OFF.
- Transmission is in Park.
- All C-III plus / VI cables are securely connected.
- All C-III plus updates are installed.
- **Select Home, and restart the reprogram procedure from the beginning.**

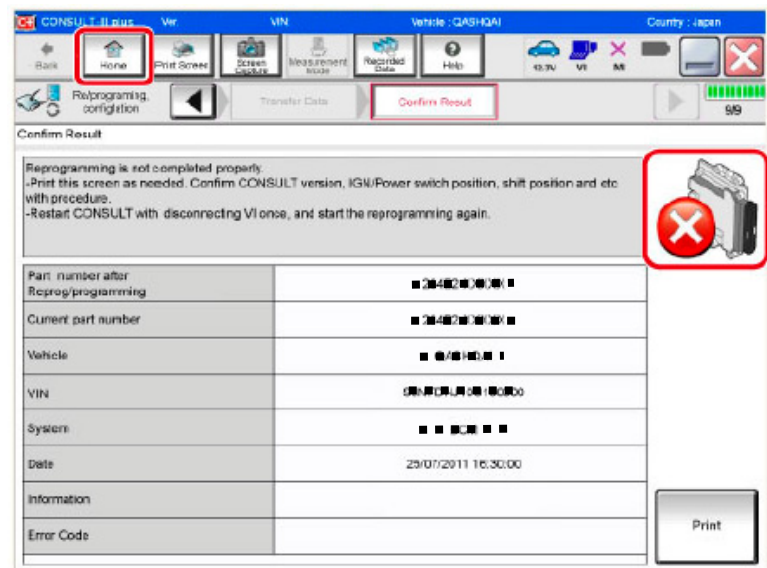


Figure 6

11. Follow the on-screen instructions to perform the following:

- **Throttle Valve Closed Position**
- **Idle Air Volume Learn (IAVL)**

**NOTE:**

- **Listed below are common conditions required for IAVL to complete.**
- **If IAVL does not complete within a few minutes, a condition may be out of range.**
- **Refer to the appropriate Electronic Service Manual (ESM) for specific conditions required for the vehicle you are working on.**
  - Engine coolant temperature: 70 -100° C (158 -212°F)
  - Battery voltage: More than 12.9V (At idle)
  - Selector lever: P or N
  - Electric load switch: OFF (Air conditioner, headlamp, rear window defogger)
  - Steering wheel: Neutral (Straight-ahead position)
  - Vehicle speed: Stopped
  - Transmission: Warmed up

- **Accelerator Pedal Close Position Learning**
- **Erase DTCs**

Go to the next page.

- 12. When the entire reprogramming process is complete, the screen in Figure 7 will display.
- 13. Verify the before and after part numbers are different.
- 14. Print a copy of this screen (Figure 7) and attach it to the repair order for warranty documentation.
- 15. Select **Confirm**.

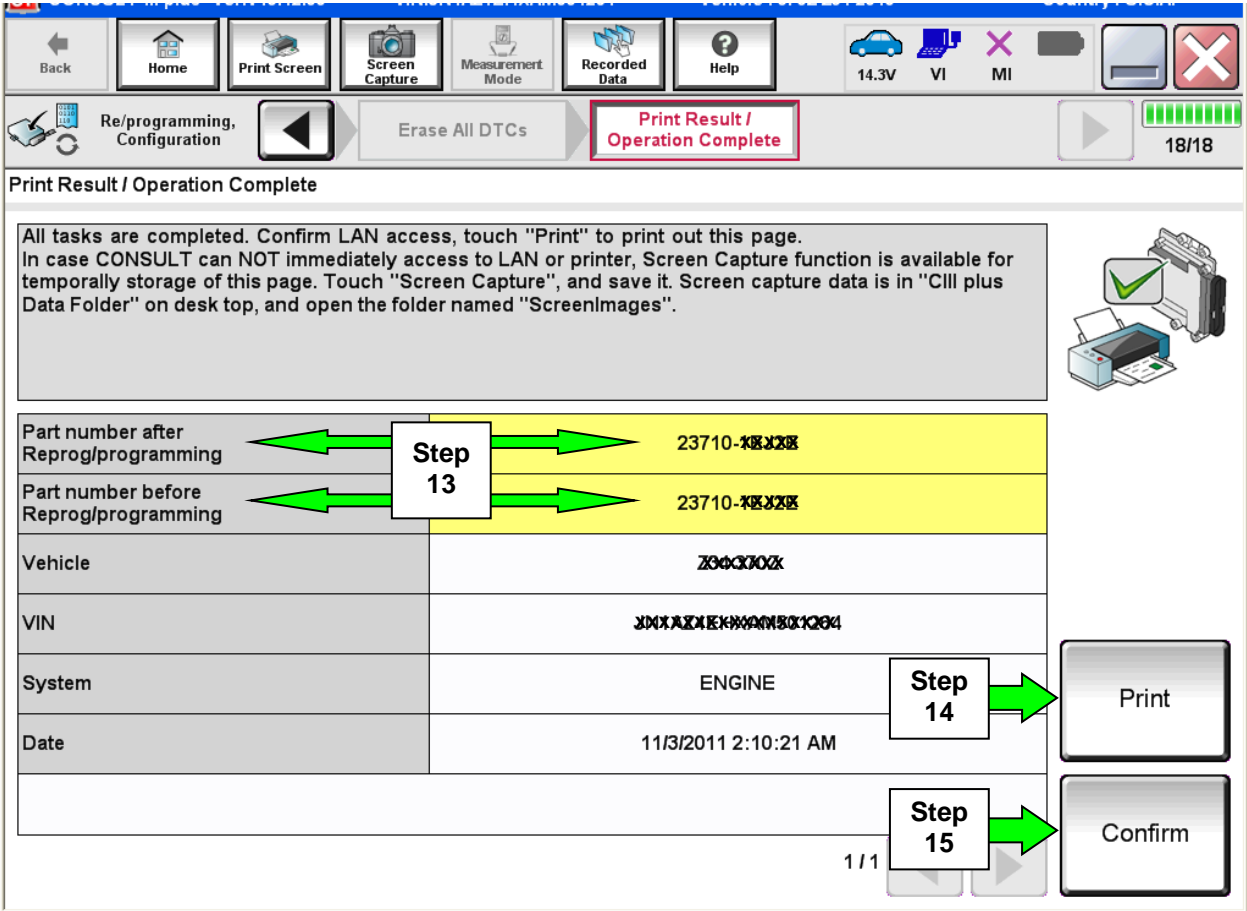


Figure 7

- 16. Close C-III plus.
- 17. Turn the ignition OFF.
- 18. Disconnect the plus VI from the vehicle.
- 19. Make sure the vehicle operates correctly and the MIL is OFF.
  - If the MIL comes ON, go back to ASIST for further diagnostic information.
  - Diagnosis and repairs beyond ECM reprogramming (and TCM reprogramming, if it applies) are not covered by this bulletin.

## CLAIMS INFORMATION

Submit a Primary Part (PP) type line claim using the following claims coding:

DESCRIPTION	PFP	OP CODE	SYM	DIA	FRT
Reprogram ECM	(1)	DE97AA	HD	32	(2)

- (1) Refer to the electronic parts catalog (FAST or equivalent) and use the ECM part number as the Primary Failed Part (PFP).
- (2) Reference the current Nissan Warranty Flat Rate Manual and use the indicated FRT.

**AND if TCM Reprogramming Applies (2013 Versa Sedan only)**

Submit a Primary Part (PP) type line claim using the following claims coding:

DESCRIPTION	PFP	OP CODE	FRT
Reprogram TCM	(1)	JE99AA	(2)

- (1) Refer to the electronic parts catalog (FAST or equivalent) and use the ECM part number as the Primary Failed Part (PFP).
- (2) Reference the current Nissan Warranty Flat Rate Manual and use the indicated FRT.

