



SERVICE BULLETIN

Classification: BT06-018b	Reference: NTB06-066b	Date: December 13, 2007
------------------------------	--------------------------	----------------------------

PATHFINDER, FRONTIER, MURANO, ALTIMA SEDAN, AND ALTIMA COUPE; SUNROOF LID SEAL

This bulletin has been amended. Applied Vehicles has been updated to include 2007 – 2008 Altima and 2008 Frontier. No other content has changed. Please discard all previous versions of this bulletin.

- APPLIED VEHICLES:**
- 2005 – 2008 Pathfinder (R51)
 - 2005 – 2008 Frontier (D40) Crew Cab
 - 2005 – 2007 Murano (Z50)
 - 2007 – 2008 Altima Sedan (L32)
 - 2008 Altima Coupe (CL32)

IF YOU CONFIRM

The sunroof lid seal is not sealing correctly.

ACTIONS

1. Make sure the sunroof glass rubber edge is in good condition.
2. If the rubber edge is in good condition, replace the sunroof lid seal with the new one listed in Parts Information.

PARTS INFORMATION

DESCRIPTION	MODEL	PART #	QUANTITY
Sunroof Lid Seal	R51 & D40	91245-EA50A	1
Sunroof Lid Seal	Z50 & L32	91246-9W01A	1
Sunroof Lid Seal	CL32	91246-JB11A	1

CLAIMS INFORMATION

Submit a Primary Part (PP) type line claim using the following claims coding:

DESCRIPTION	PFP	OP CODE	SYM	DIA	FRT
RPL Sunroof Lid Seal	(1)	UQ12AA	ZE	32	(2)

- (1) Reference the Parts Information Table and use the Sunroof Lid Seal P/N as the PFP.
- (2) Reference the current Nissan Warranty Flat Rate Manual and use the indicated FRT.

IMPORTANT: The purpose of "ACTIONS" (above) is to give you a quick idea of the work you will be performing. You **MUST** closely follow the entire Service Procedure (starting on page 2) as it contains information that is essential to successfully completing the repair.

Nissan Bulletins are intended for use by qualified technicians, not 'do-it-yourselfers'. Qualified technicians are properly trained individuals who have the equipment, tools, safety instruction, and know-how to do a job properly and safely. NOTE: If you believe that a described condition may apply to a particular vehicle, DO NOT assume that it does. See your Nissan dealer to determine if this applies to your vehicle.

SERVICE PROCEDURE

1. Remove the sunroof lid assembly.
 - Refer to section RF in the Service Manual.
2. Check the sunroof glass rubber edge (see Figure 1).

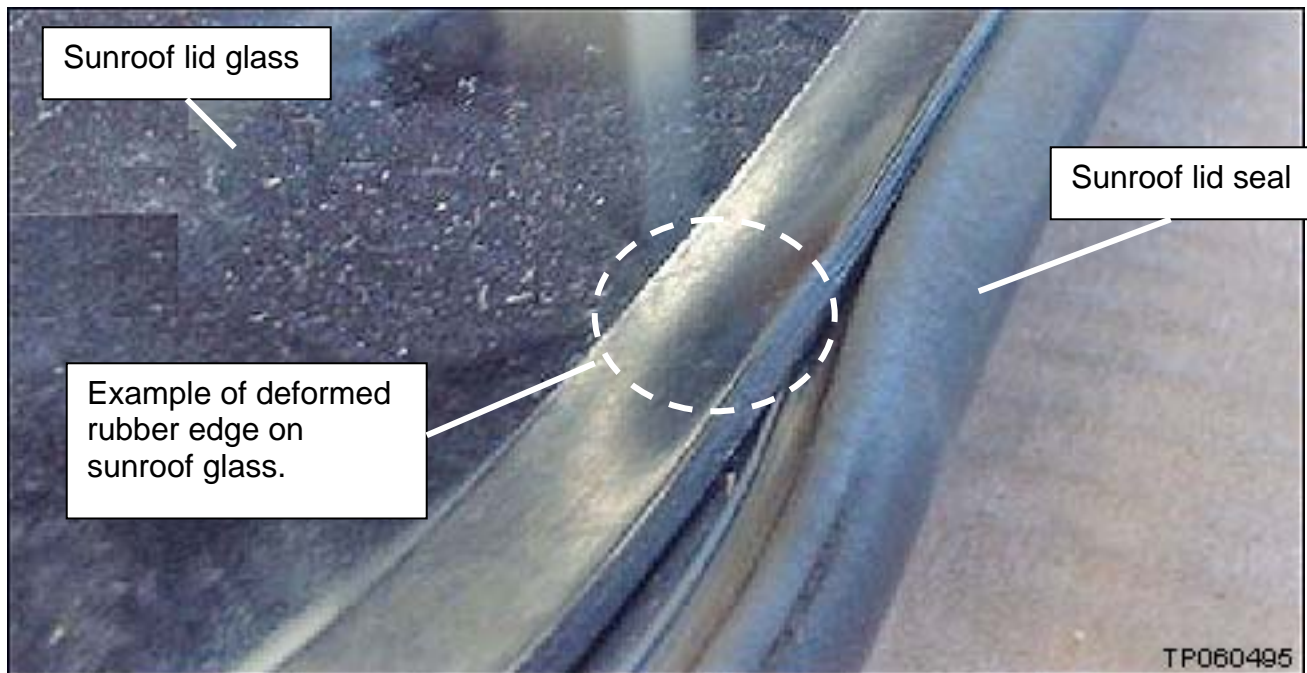


Figure 1

- If the rubber edge is deformed or damaged (see Figure 1 for example), **this bulletin does not apply**. The entire sunroof lid assembly must be replaced.
- If the rubber edge is in good condition, continue with this procedure.

3. Remove the old sunroof lid seal.

- Just pull it off.



Figure 2

4. Install the new seal.

- Stretch the seal around the sunroof lid.
- Push the seal into the “ditch” (channel).
- Make sure the seal is pushed all the way into the ditch—no lifted areas.

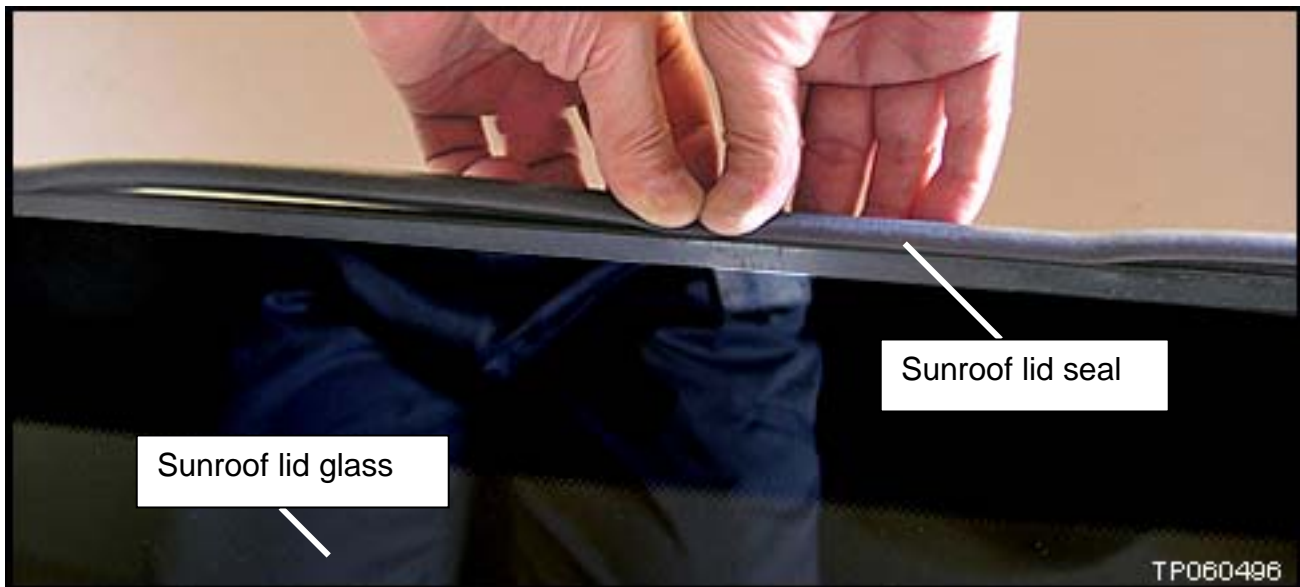


Figure 3

NOTE: If needed, very light taps with a rubber hammer can be used to press the seal into the “ditch”.

5. Reinstall the sunroof lid into the vehicle. Make sure the sunroof operates correctly and seals correctly.
