

ATTENTION:

GENERAL MANAGER

PARTS MANAGER

CLAIMS PERSONNEL

SERVICE MANAGER

IMPORTANT - All Service Personnel Should Read and Initial in the boxes provided, right.

© 2023 Subaru of America, Inc. All rights reserved.



QUALITY DRIVEN® SERVICE

SERVICE BULLETIN

APPLICABILITY: 2019-22MY Ascent

NUMBER: 07-219-23R

SUBJECT: Genuine Alternative Battery Replacement

DATE: 02/10/23

REVISED: 05/24/23

INTRODUCTION:

This bulletin announces availability of a new Genuine Subaru Alternative Replacement Battery introduced to satisfy current supply demands. The new Genuine Subaru Alternative Replacement Battery has a higher capacity and is slightly larger in size. When replacing an original equipped battery (**SOA821B200 or SOA821B600**) with this new Genuine Subaru Alternative Replacement Battery (**SOA821B900**), additional parts and slight modification will be required to ensure proper positioning and security. Please refer to work procedures outlined below.

PART INFORMATION:

REMINDER: Always order the most up-to-date replacement parts based on the specific VIN being repaired.

Part Description	Part Number
Battery	SOA821B900

Part Description	Part Number
TRAY-BATTERY	82122CA000
ROD-BATTERY FIX	82161SJ000*
BATTERY COVER	82123AN000
GROMMET SHEET	909230046
*THE ORIGINAL ROD NUT MUST BE RETAINED FOR REUSE.	

IMPORTANT NOTE: The parts listed above must be ordered through PRIME.

SERVICE PROCEDURE / INFORMATION:

Please review the battery identification, charging, and testing information provided in Service Bulletin **07-178-21** prior to performing any battery testing and/or charging. **ALWAYS** confirm Midtronics equipment has the latest software available.

IMPORTANT: The original battery cover, battery tray, and rear holding rod are to be cleaned and returned to the customer.

CAUTION: VEHICLE SERVICING PERFORMED BY UNTRAINED PERSONS COULD RESULT IN SERIOUS INJURY TO THOSE PERSONS OR TO OTHERS.

Subaru Service Bulletins are intended for use by professional technicians ONLY. They are written to inform those technicians of conditions that may occur in some vehicles, or to provide information that could assist in the proper servicing of the vehicle. Properly trained technicians have the equipment, tools, safety instructions, and know-how to do the job correctly and safely. If a condition is described, DO NOT assume that this Service Bulletin applies to your vehicle, or that your vehicle will have that condition.

Subaru of America, Inc. is ISO 14001 Compliant

ISO 14001 is the international standard for excellence in Environmental Management Systems. Please recycle or dispose of automotive products in a manner that is friendly to our environment and in accordance with all local, state and federal laws and regulations.

Continued...

STEP 1: Refer to the applicable Service Manual and review: General Description > Repair Contents > Action required before & after Battery Disconnect. Additionally, record any stored seat position(s) before proceeding. Relearn any seat position memory after work is complete. If the power rear gate (PRG) height has been customized, that position must also be noted and relearned.

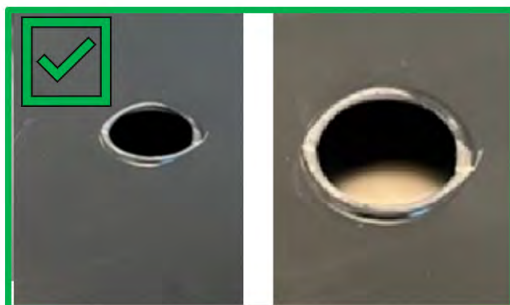
STEP 2: Remove the battery as per the applicable Service Manual: Engine > STARTING/ CHARGING SYSTEMS > Battery > Removal

STEP 3: Prepare the replacement battery tray (p.n. 82122CA000) for installation:

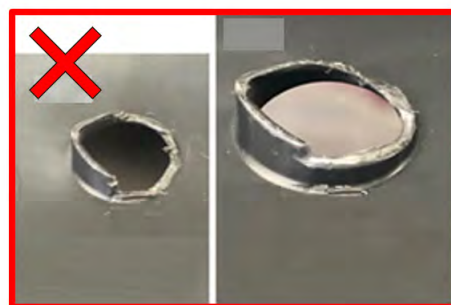
- A. **CAREFULLY** cut off and trim the two protrusions on the bottom of the battery tray. This will allow a more streamlined fit when installed on the vehicle. Try to make the cut as flush as possible.



CAUTION: Be sure the protrusions are trimmed flush. The remaining protrusion height **MUST** be less than 2mm to provide proper fitment.



Remaining Height Is Less Than 2mm



Remaining Height Is More Than 2mm

- B. Remove the original battery tray. **DO NOT** discard, this must be returned to the customer.



Continued...

C. Cover the newly made holes with the grommet sheets (p.n. 909230046).



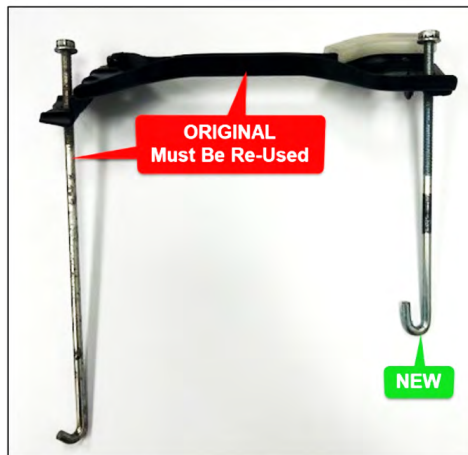
D. Securely fit the replacement battery tray to the vehicle.



STEP 4: Install the replacement battery cover (p.n. 82123AN000) to the alternative replacement battery. Confirm the bottom of the cover is aligned flush with the bottom of the battery. **DO NOT** discard, this must be returned to the customer.



STEP 5: Assemble the **ORIGINAL** battery holder, **NEW** rear holding rod (p.n. 82161SJ000), and the **ORIGINAL** front holding rod as shown below. The original rod nut can be transferred to the new rear holding rod.



Continued...

NOTE: DO NOT discard the original rear rod. This part is to be returned to be returned to the customer.

STEP 6: Install the battery as per the applicable Service Manual: Engine > STARTING/CHARGING SYSTEMS > Battery > Installation

STEP 7: Install the battery holder and holding rods on to the battery.

- A. Torque the two holding rod mounting nuts to **3.5 N·m (2.6ft.-lbs. or 31inch.-lbs.)**.
- B. Torque the positive terminal to **6 N·m (4.4ft.-lbs. or 53inch.-lbs.)**.
- C. Torque the negative terminal to **7.5Nm (5.5ft.-lbs. or 66inch.-lbs.)**.
- D. If the battery sensor is removed or disconnected torque to 7.5Nm (5.5ft.-lbs. or 66inch.-lbs.) while supporting the sensor with the other hand as outlined in the applicable Service Manual under: STARTING/CHARGING SYSTSEMS > Battery Sensor.

NOTE: Confirm the battery holder is center mounted with the battery cables secured and routed correctly.



WARRANTY / CLAIM INFORMATION:

For vehicles within the Basic New Car Limited Warranty period, this repair may be submitted using the following claim information:

Labor Description	Labor Operation #	Labor Time	Fail Code
STD FLOODED BATT TEST & REPL W/ ENHANCED FLOODED BATT	B800-003	0.5	FFG-42
ADD TIME; MOUNTING HARDWARE R&R	C800-055	0.2	

NOTE: A valid battery test code or an authorization with reason Leaking/cracked battery with be required for Claim submission.

IMPORTANT REMINDERS:

- SOA strongly discourages the printing and/or local storage of service information as previously released information and electronic publications may be updated at any time.
- Always check for any open recalls or campaigns anytime a vehicle is in for servicing.
- Always refer to STIS for the latest service information before performing any repairs.