

**ATTENTION:**

GENERAL MANAGER   
 PARTS MANAGER   
 CLAIMS PERSONNEL   
 SERVICE MANAGER

IMPORTANT - All  
 Service Personnel  
 Should Read and  
 Initial in the boxes  
 provided, right.




QUALITY DRIVEN® SERVICE

## SERVICE BULLETIN

**APPLICABILITY:** 2013MY and Later Impreza Models  
 2013MY and Later XV Crosstrek™ Models

**SUBJECT:** Additional PDI Procedure for Installation of  
 Tie-Down Hole Plugs

**NUMBER:** 01-171-13  
**DATE:** 01/10/13

### INTRODUCTION

Beginning with the VIN numbers listed in the chart below, body plugs must be installed into the tie-down holes on both sides of the vehicle during PDI. The plugs are placed in the vehicle's glove box during port processing. The installation of these plugs eliminates these openings as a source of dust intrusion into the vehicle.

### COUNTERMEASURE IN PRODUCTION

The additional tie-down hole plugs were added to the existing tool set starting with the following VINs:

MODEL	TYPE	STARTING VIN NUMBER
Impreza and XV Crosstrek	4-Door	D*010889
	5-Door	D*802448

### PART INFORMATION

If needed, the plugs are available separately by ordering p.n. 90371CA010.

*Continued...*

**CAUTION: VEHICLE SERVICING PERFORMED BY UNTRAINED PERSONS COULD  
 RESULT IN SERIOUS INJURY TO THOSE PERSONS OR TO OTHERS.**

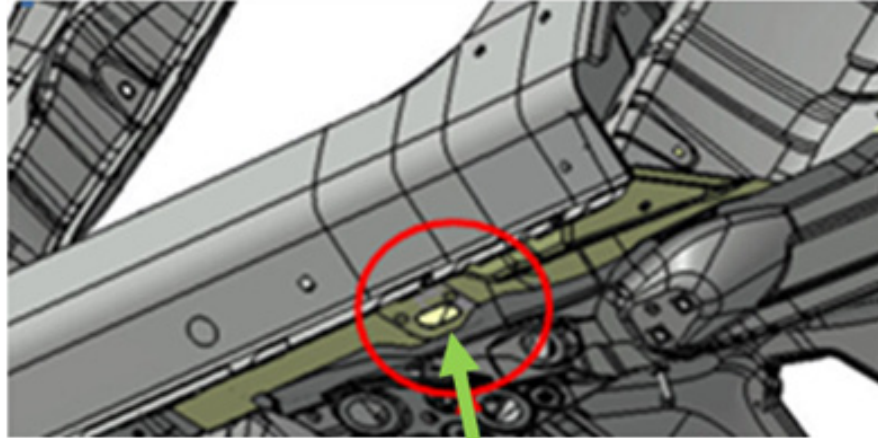
Subaru Service Bulletins are intended for use by professional technicians ONLY. They are written to inform those technicians of conditions that may occur in some vehicles, or to provide information that could assist in the proper servicing of the vehicle. Properly trained technicians have the equipment, tools, safety instructions, and know-how to do the job correctly and safely. If a condition is described, DO NOT assume that this Service Bulletin applies to your vehicle, or that your vehicle will have that condition.

**SUBARU OF AMERICA, INC. IS  
 "ISO 14001 COMPLIANT"**

The international standard for excellence in Environmental Management Systems. Please recycle or dispose of automotive products in a manner that is friendly to our environment and in accordance with all local, state and federal laws and regulations.

## SERVICE PROCEDURE / INFORMATION

The illustration below shows the location ahead of the rear wheel arch for installation of the additional tie-down plugs which are provided for both sides of the vehicle.



Tie-Down Hole



Tie-Down Plugs