

**ATTENTION:**

- GENERAL MANAGER
- PARTS MANAGER
- CLAIMS PERSONNEL
- SERVICE MANAGER

IMPORTANT - All Service Personnel Should Read and Initial in the boxes provided, right.




QUALITY DRIVEN® SERVICE

## SERVICE BULLETIN

**APPLICABILITY:** 1990-2012MY All Models with Automatic Transmission  
**SUBJECT:** Remanufactured Automatic Transaxle Program  
**NUMBER:** 16-63-99R  
**DATE:** 08/05/00  
**REVISED:** 12/12/12

### INTRODUCTION

Subaru of America, Inc. has extended the availability of remanufactured automatic transmissions to include most Subaru models starting from 1990MY vehicles. This includes most 4EAT, 4DAT and 5AT transmissions. Please check applications and availability through normal parts channels prior to making vehicle repairs. A remanufactured transmission must be used for all repairs reimbursed by Subaru requiring a transmission overhaul or replacement. Only the following repairs to the vehicle’s original transmission may be performed:

- External electrical components.
- Transmission wiring harness.
- External oil leaks.
- Converter case and internal components (Front Differential).
- Transfer case, transfer clutches, and solenoid assembly. Including the new VTD system.
- Torque converter as long as it is not an internal failure that has contaminated the fluid.
- Control Valve Body replacement (4DAT and 5AT only) as long as an internal failure has not contaminated the fluid.
- Control Valve Body Electrical Components (4EAT only).
- Mechanical shifter and parking system components.

**Note:** If the repair estimate (parts and labor) to repair one or more of the above items exceeds 90% of the remanufactured transmission repair cost (parts and labor), then a remanufactured transmission should be used. Full details are available in the CDS Policies and Procedures Manual section 8.4.33.1.

**Remanufactured transmissions may not be used to repair new in-stock vehicles.** To ensure full core credit, dealers should follow all instructions listed on the Subaru Transmission Core Return Procedures and fill out the documentation completely using the online core return system. Keep a copy of the Credit Request and Diagnosis Form with the vehicle records. All transmissions replaced with a remanufactured transmission (warranty or non-warranty) are returned to SUBARU OF AMERICA, Inc. at the Grove City, OH address outlined in the document package. All other OE transmissions replaced under warranty must be shipped to the location indicated on the warranty parts return notice. Transmissions incorrectly shipped will result in the dealer not receiving the core credit

*Continued...*

**CAUTION: VEHICLE SERVICING PERFORMED BY UNTRAINED PERSONS COULD RESULT IN SERIOUS INJURY TO THOSE PERSONS OR TO OTHERS.**

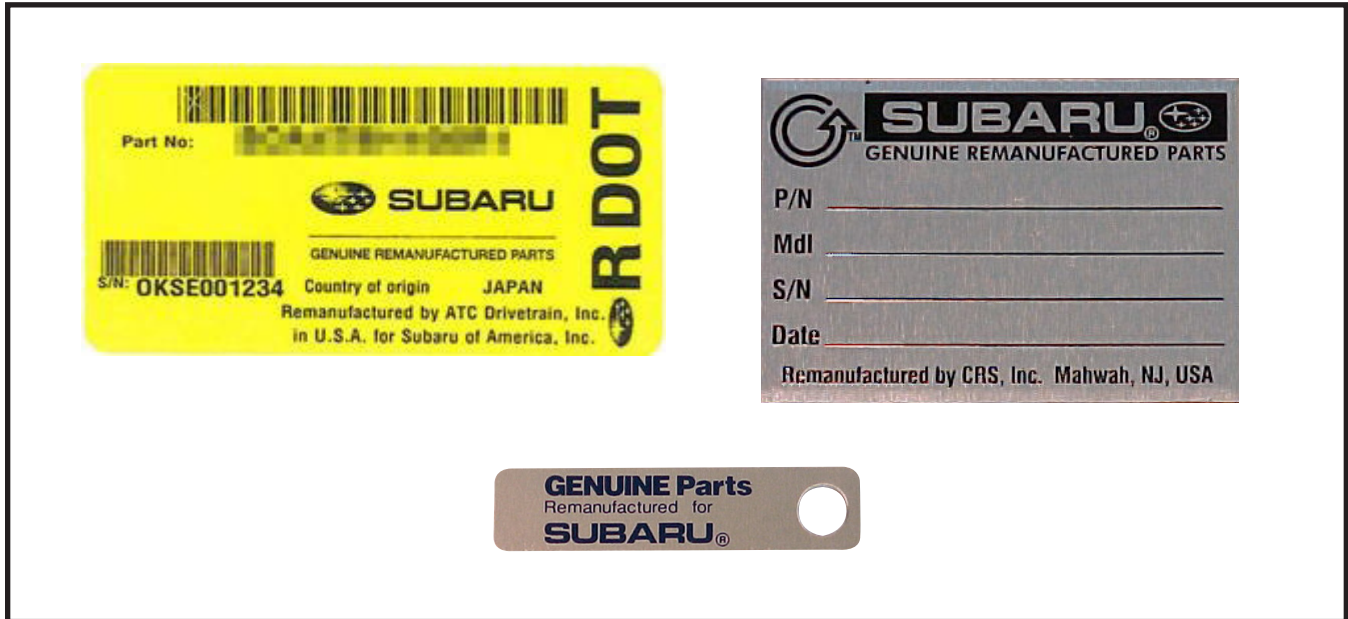
Subaru Service Bulletins are intended for use by professional technicians ONLY. They are written to inform those technicians of conditions that may occur in some vehicles, or to provide information that could assist in the proper servicing of the vehicle. Properly trained technicians have the equipment, tools, safety instructions, and know-how to do the job correctly and safely. If a condition is described, DO NOT assume that this Service Bulletin applies to your vehicle, or that your vehicle will have that condition.

**SUBARU OF AMERICA, INC. IS "ISO 14001 COMPLIANT"**

The international standard for excellence in Environmental Management Systems. Please recycle or dispose of automotive products in a manner that is friendly to our environment and in accordance with all local, state and federal laws and regulations.

or a debit of the claim for a part not returned as requested. The dealer will be responsible for tracing and returning the unit to the correct location at their own expense.

The same repairs as those of an original equipment transmission can be performed on a remanufactured transmission, but require District Parts and Service Manager's prior authorization. **Remanufactured units can be easily identified because at least one of the tags shown below will be attached to the unit.**



Each remanufactured transmission will have a tag attached explaining the installation procedures and precautions. These procedures must be followed otherwise non-warranty failures could occur. The cooler flushing procedure can be found in Subaru Service Bulletin 16-42-90.

#### IMPORTANT

**Before replacing an automatic transmission with a remanufactured unit, it is critical that the installing technician perform the following:**

**Ensure that the transmission radiator cooler and lines are clear of all debris and are not kinked or obstructed.**

**If applicable for the model, install or replace the auxiliary filter.**

**Check the remanufactured unit to ensure that it is the correct transmission for the application and not damaged in any way.**

**Ensure all shipping plugs are removed from the remanufactured transmission prior to installation.**

**Ensure the front differential and transmission are filled with the proper gear oil and ATF.**

**Note: All 5 AT (4DAT 2006MY & after) must use "HP" ATF. All remanufactured 5 AT must have the "Learning Control" procedure performed to reduce shift shock prior to customer delivery. See applicable Service Information on STIS.**

P/N 1000-TAG

Depending on model and model year of vehicle, learning procedures may be required. Please refer to Subaru Service bulletin 16-72-07 for details. Failure to perform the learning procedures **could result in customer drivability complaints.**

*Continued...*

**Shipping Precaution:**

2010-generation Legacy & Outback, 3.6R only: To avoid damaging this component, please detach the uppermost bracket of the 5AT from the transmission prior to shipping.

