

ATTENTION:

- GENERAL MANAGER
- PARTS MANAGER
- CLAIMS PERSONNEL
- SERVICE MANAGER

IMPORTANT - All Service Personnel Should Read and Initial in the boxes provided, right.



QUALITY DRIVEN® SERVICE

SERVICE BULLETIN

APPLICABILITY: 2013 BRZ

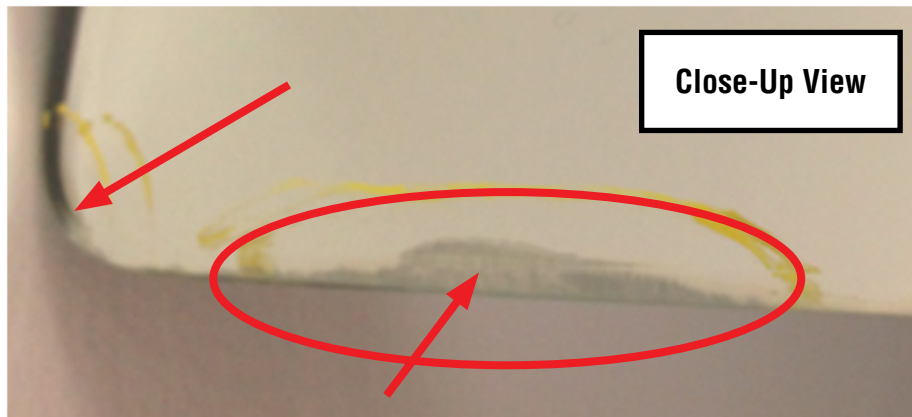
NUMBER: 12-168-14

SUBJECT: Appearance Imperfection of Inside Rear View Mirror

DATE: 03/31/14

INTRODUCTION

This bulletin informs of how to repair a possible visual imperfection in the frameless rear-view mirror. A countermeasure mirror assembly is now available to address a customer concern of what appears to be de-lamination of the mirror glass as shown in the photo below.



COUNTERMEASURE IN PRODUCTION

The countermeasure rear-view mirror assembly was incorporated into production on September 1, 2012 starting with VIN **D* 603893**.

Continued...

CAUTION: VEHICLE SERVICING PERFORMED BY UNTRAINED PERSONS COULD RESULT IN SERIOUS INJURY TO THOSE PERSONS OR TO OTHERS.

Subaru Service Bulletins are intended for use by professional technicians ONLY. They are written to inform those technicians of conditions that may occur in some vehicles, or to provide information that could assist in the proper servicing of the vehicle. Properly trained technicians have the equipment, tools, safety instructions, and know-how to do the job correctly and safely. If a condition is described, DO NOT assume that this Service Bulletin applies to your vehicle, or that your vehicle will have that condition.

SUBARU OF AMERICA, INC. IS "ISO 14001 COMPLIANT"

The international standard for excellence in Environmental Management Systems. Please recycle or dispose of automotive products in a manner that is friendly to our environment and in accordance with all local, state and federal laws and regulations.

PART INFORMATION

The part number for the countermeasure rear-view mirror assembly is **92039CA000**.

SERVICE PROCEDURE / INFORMATION

Once the delamination of the mirror glass has been verified, replace the assembly with the countermeasure part following the procedure outlined in the applicable Service Manual.

WARRANTY / CLAIM INFORMATION

For vehicles within the Basic New Car Limited Warranty period, this repair may be claimed using the following information:

LABOR DESCRIPTION	LABOR OPERATION #	FAIL CODE	LABOR TIME
INTERIOR REAR VIEW MIRROR &/OR COVER R&R	A913-211	YAE-48	0.2

Continued...