

ATTENTION:

GENERAL MANAGER ☐
 PARTS MANAGER ☐
 CLAIMS PERSONNEL ☐
 SERVICE MANAGER ☐

IMPORTANT - All
 Service Personnel
 Should Read and
 Initial in the boxes
 provided, right.



SUBARU

QUALITY DRIVEN® SERVICE

SERVICE BULLETIN

APPLICABILITY: 2013 MY BRZ

NUMBER: 12-145-13R

SUBJECT: Condensation in Rear Combination Lamps,
 Retaining Nut and Sealing Gasket Change

DATE: 02/15/13

REVISED: 04/17/13

INTRODUCTION

This Bulletin provides information regarding the following:

- condensation accumulating in the rear combination lamp assembly(ies)
- revised rear combination lamp housing retaining nuts and sealing gaskets
- repair procedure for the combination lamp mounting areas of the rear body panel

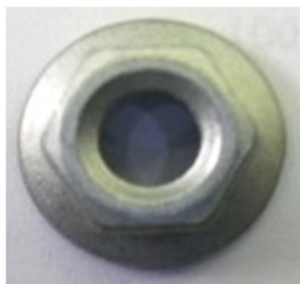
Due to a smaller diameter flange surface, the original retaining nuts may distort the rear body panel mounting and sealing surfaces for the combination lamps enough to allow moisture seepage past the seals into the combination lamps and possibly the trunk area. In addition, the thickness of the sealing gasket (packing) for the rear combination lamp has been increased from 5mm to 8mm.

COUNTERMEASURE IN PRODUCTION

- The revised retaining nuts with a larger diameter flange surface were incorporated into production December 5th, 2012 starting with VIN D*605847.
- The revised combination lamp sealing gaskets were incorporated into production February 1st, 2013 starting with VIN D*607611.

PART INFORMATION

DESCRIPTION	PART NUMBER
Flange Nut	902370040
Packing (gasket) R/Hand	84940CA060
Packing (gasket) L/Hand	84940CA070



Original Nut, 12mm
diameter flange surface



Revised Nut, 15mm
diameter flange surface

Continued...

**CAUTION: VEHICLE SERVICING PERFORMED BY UNTRAINED PERSONS COULD
 RESULT IN SERIOUS INJURY TO THOSE PERSONS OR TO OTHERS.**

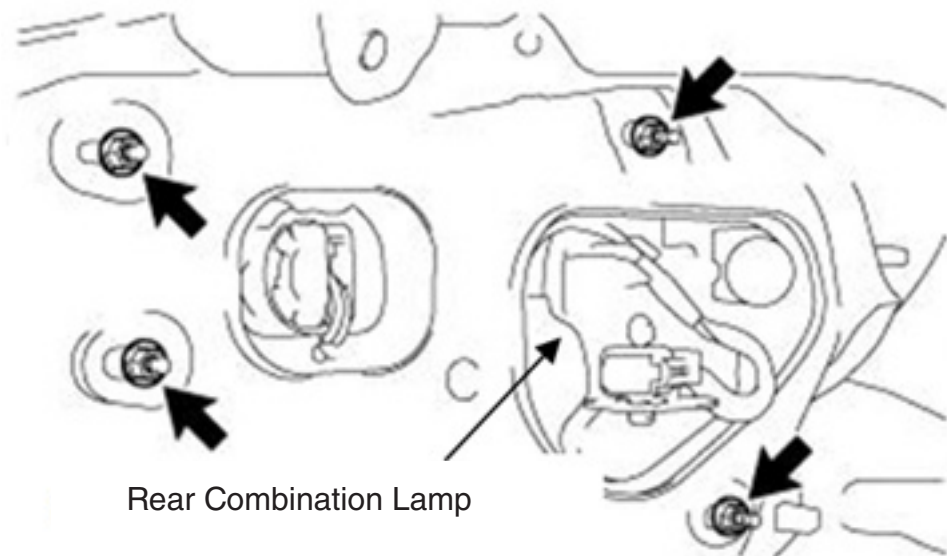
Subaru Service Bulletins are intended for use by professional technicians ONLY. They are written to inform those technicians of conditions that may occur in some vehicles, or to provide information that could assist in the proper servicing of the vehicle. Properly trained technicians have the equipment, tools, safety instructions, and know-how to do the job correctly and safely. If a condition is described, DO NOT assume that this Service Bulletin applies to your vehicle, or that your vehicle will have that condition.

**SUBARU OF AMERICA, INC. IS
 "ISO 14001 COMPLIANT"**

The international standard for excellence in Environmental Management Systems. Please recycle or dispose of automotive products in a manner that is friendly to our environment and in accordance with all local, state and federal laws and regulations.

SERVICE PROCEDURE / INFORMATION

Retaining Nut Locations (4)

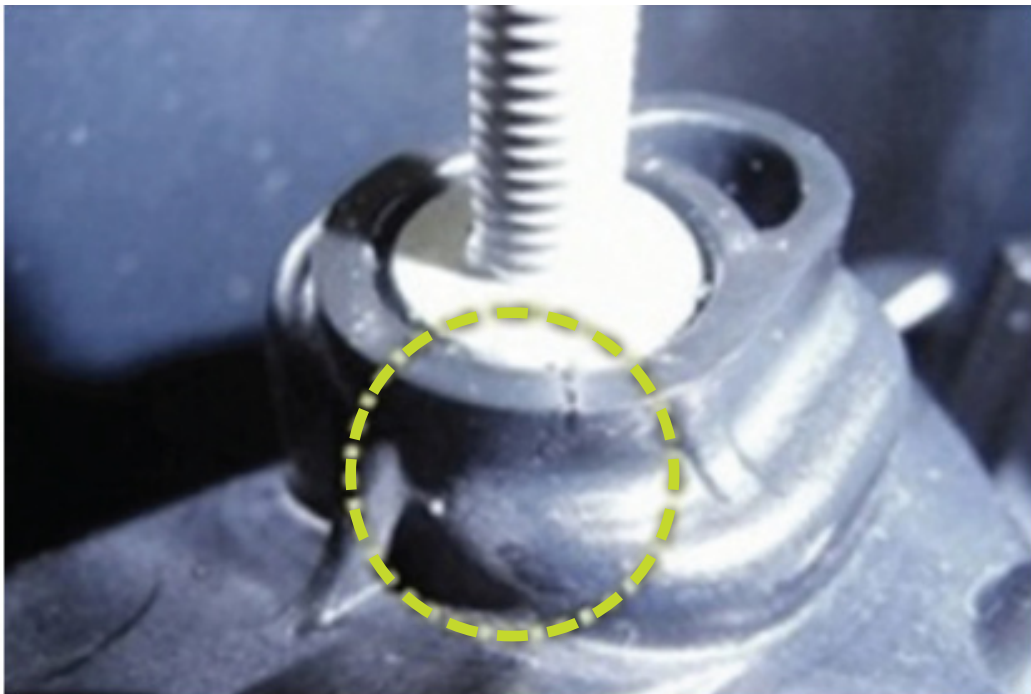


NOTE: Refer to TSB 12-131-12R for more helpful information on this subject.

Remove the trunk floor mat, rear floor finish plate, inner trunk trim and the affected rear combination lamp assembly(s) following the instructions in the applicable Service Manual.

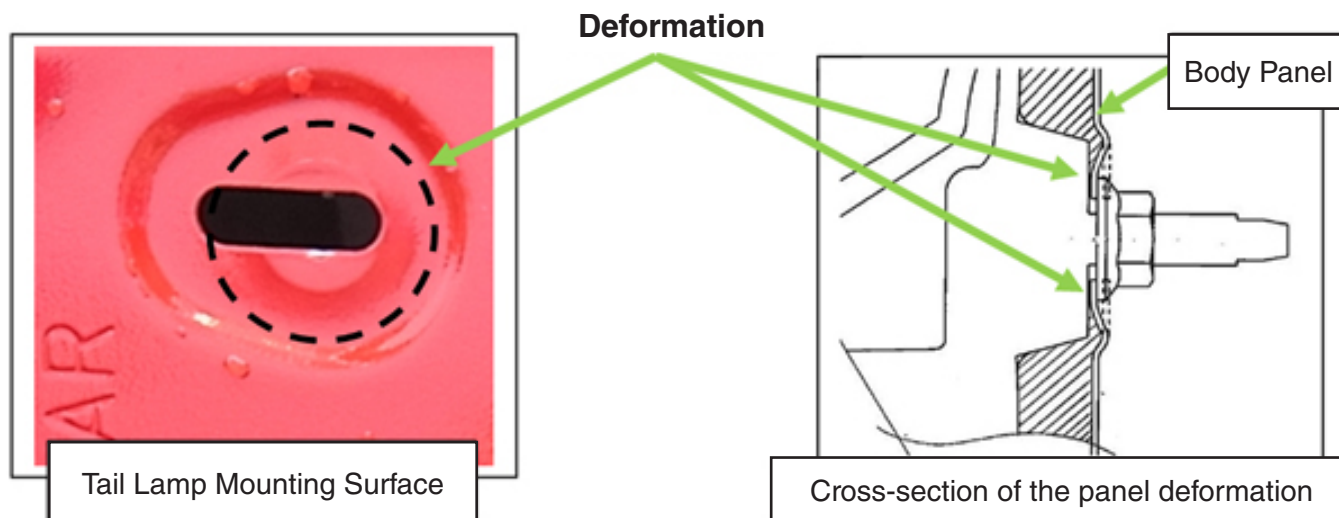
Once the combination lamps are removed, inspect their mounting stud boss areas carefully for any cracking as shown in the photo example below. Any damaged combination lamps must be replaced.

Example of crack



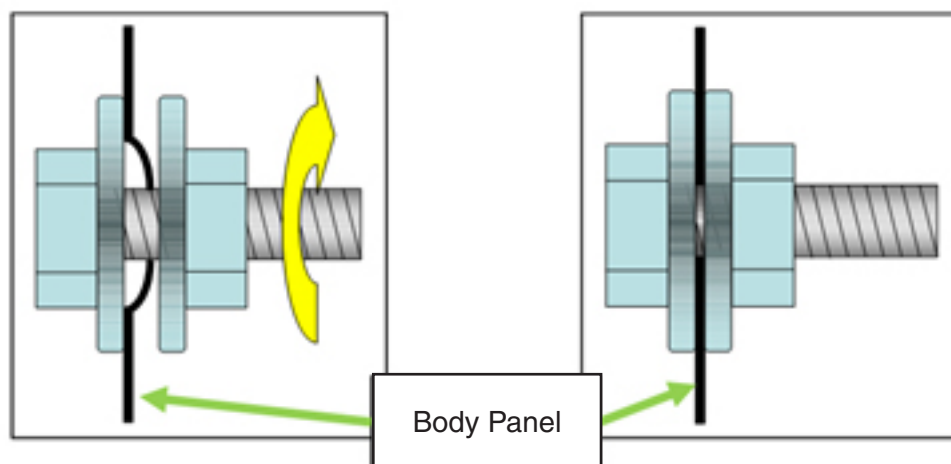
Continued...

Inspect the rear body panel in the retaining nut areas for any deformation of the metal as shown in the illustrations below.



If any deformation is found, CAREFULLY straighten the affected mounting area using a small body hammer and dolly.

Another straightening method is to clamp the body panel using a bolt, flat washers and a nut as shown in the illustration below.

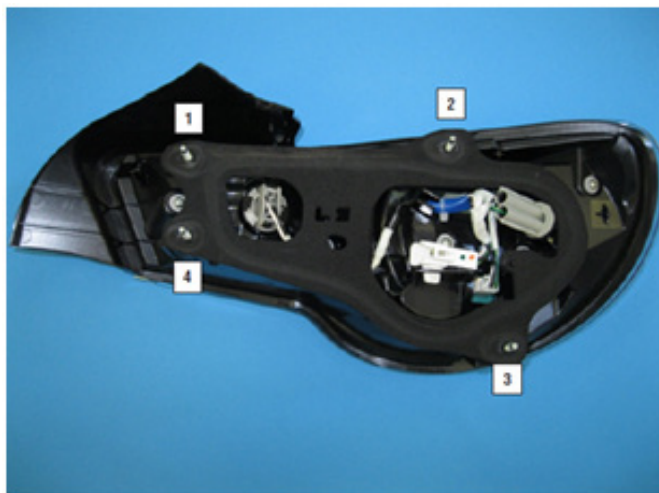


Once any deformation has been straightened, be sure to touch up any damaged paint surfaces.

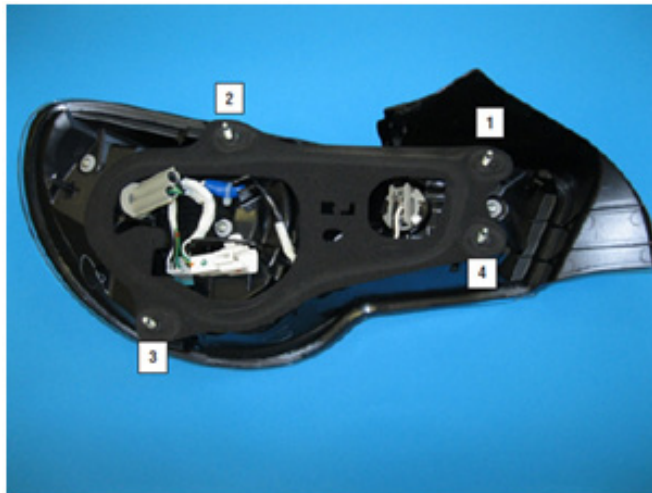
Continued...

IMPORTANT NOTES:

- Before reinstalling the tail combination assemblies, always install new sealing gaskets as they are one-time use items.
- The proper torque sequence must be followed as shown in the following illustrations or damage to the combination lamp assembly may result. The torque specification (unchanged) for the retaining nuts is 4.5 Nm (39 inch-pounds).



L/H Sequence



R/H Sequence

After reassembly, confirm the combination lamps function properly before releasing the vehicle.

WARRANTY / CLAIM INFORMATION

For vehicles within the Basic New Car Limited Warranty period, this repair may be claimed using the following information:

LABOR DESCRIPTION	LABOR OPERATION #	FAIL CODE	LABOR TIME
R&R One Rear Combination Lamp, Revised Retaining Nut and Body Repair	A916-223	XCB-48	0.4
R&R Both Rear Combination Lamps, Revised Retaining Nut and Body Repair	A916-224		0.6