

ATTENTION:

- GENERAL MANAGER
- PARTS MANAGER
- CLAIMS PERSONNEL
- SERVICE MANAGER

IMPORTANT - All Service Personnel Should Read and Initial in the boxes provided, right.



QUALITY DRIVEN® SERVICE

SERVICE BULLETIN

APPLICABILITY: 2013-14MY BRZ

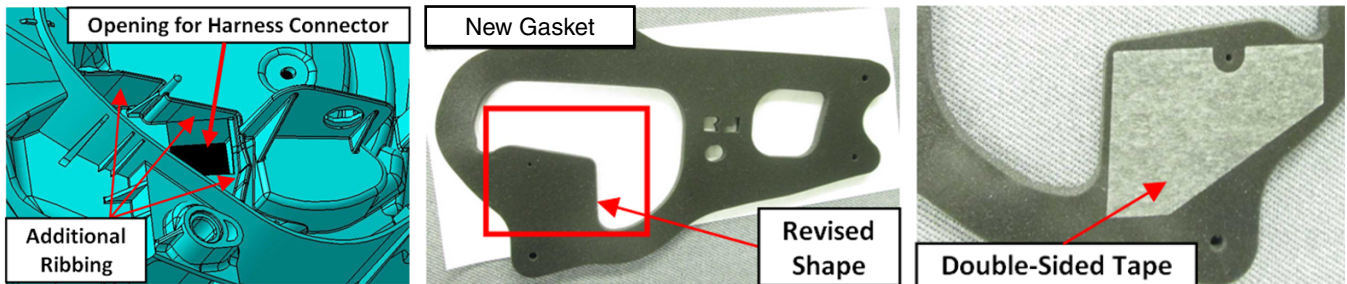
NUMBER: 12-162-14

SUBJECT: Design Change to Rear Combination Lamps to Prevent Insect Intrusion

DATE: 02/27/14

INTRODUCTION

A design change has been made to the rear combination lamp assemblies and the packing (gaskets) to prevent insects from getting inside the housings. Extra ribbing has been added around the vehicle harness connector openings along with a revised shape and addition of double-sided tape to the gaskets for improved sealing.



COUNTERMEASURE IN PRODUCTION

The revised combination lamps and gaskets were incorporated into production starting with the following VIN: **E*601089**.

PART INFORMATION

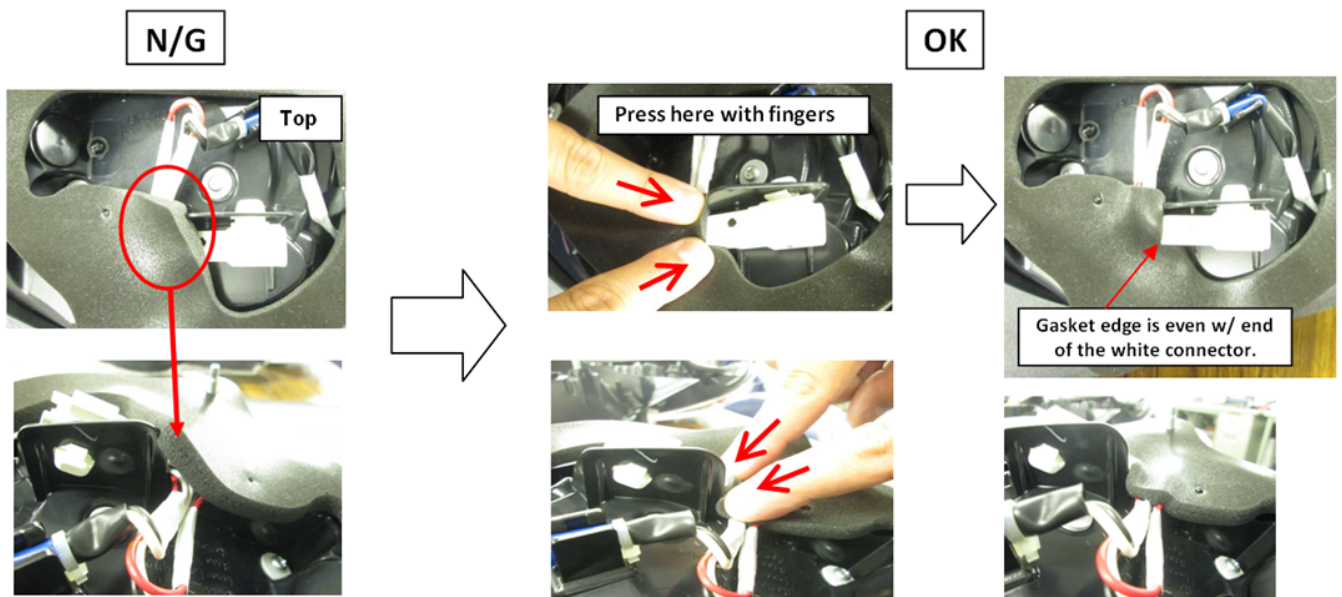
PART NAME	PART NUMBER	LOCATION
Lens and Body Compl.	84912CA061	Right
	84912CA071	Left
Packing	84940CA061	Right
	84940CA071	Left

Continued...

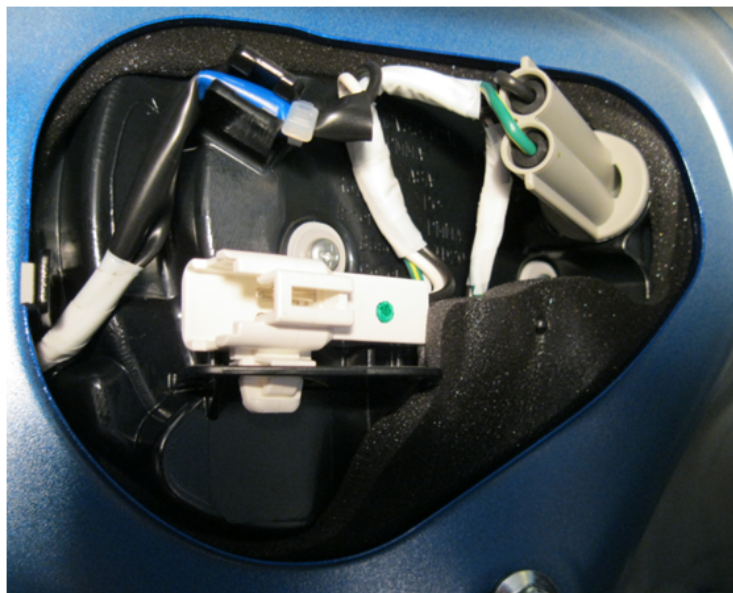
<p>CAUTION: VEHICLE SERVICING PERFORMED BY UNTRAINED PERSONS COULD RESULT IN SERIOUS INJURY TO THOSE PERSONS OR TO OTHERS.</p> <p>Subaru Service Bulletins are intended for use by professional technicians ONLY. They are written to inform those technicians of conditions that may occur in some vehicles, or to provide information that could assist in the proper servicing of the vehicle. Properly trained technicians have the equipment, tools, safety instructions, and know-how to do the job correctly and safely. If a condition is described, DO NOT assume that this Service Bulletin applies to your vehicle, or that your vehicle will have that condition.</p>	<p style="text-align: center;">SUBARU OF AMERICA, INC. IS "ISO 14001 COMPLIANT"</p> <p>The international standard for excellence in Environmental Management Systems. Please recycle or dispose of automotive products in a manner that is friendly to our environment and in accordance with all local, state and federal laws and regulations.</p>
--	---

SERVICE PROCEDURE / INFORMATION

- Remove the 3 retaining clips for the trunk threshold trim then, using a plastic trim tool, lift the trim to release the hidden trim clips located on the underside.
- Take out the 6 retaining clips from the trunk side liners then remove it to gain access to the combination lamp mounting nuts. Replace **BOTH** combination lamp assemblies.
- After removing the 4 mounting nuts from each lamp, unplug and remove the combination lamp assemblies.
- Transfer the wiring harness and bulb sockets to the replacement combination lamps. Use caution to avoid touching the bulbs. If touched, oil will transfer from your fingers and likely cause premature bulb failure. Use rubbing alcohol to clean any bulb that is touched before reinstallation.
- Peel the tape backing of the new gaskets to expose the adhesive then install the gasket down over the mounting studs. Position the revised shape area and adhesive of the gasket over the additional ribbing and align the edge with the white harness connector as shown in the photos below (right side lamp shown).

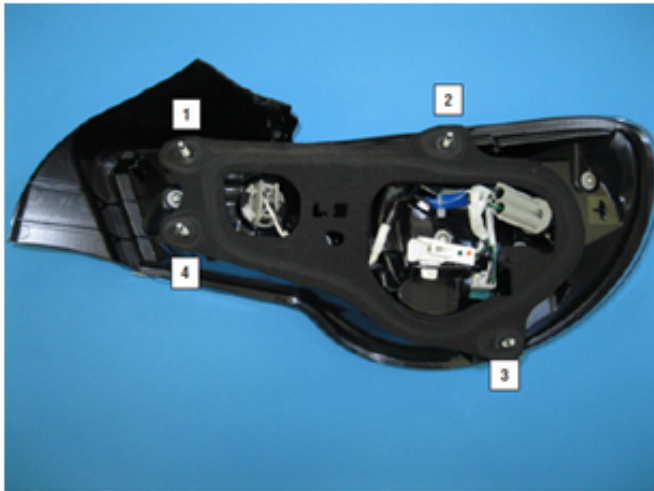


- Refit the combination lamp assemblies to the vehicle but before tightening the retaining nuts, confirm the new gaskets are in the proper position as shown in the photo below (left side shown).

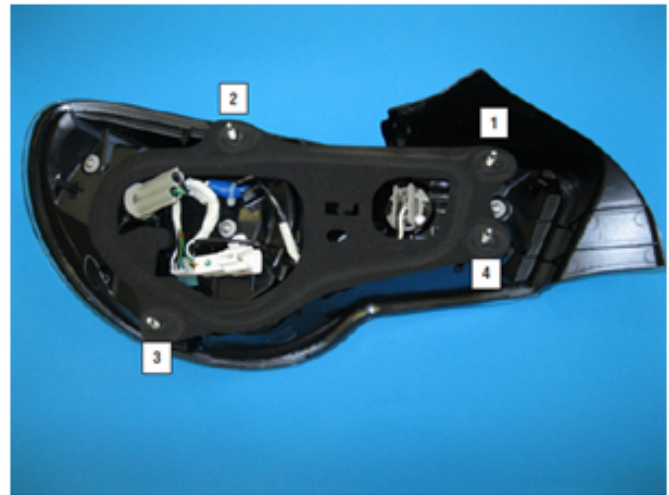


Continued...

- The proper torque sequence must be followed as shown in the following illustrations or damage to the combination lamp assembly may result. The torque specification for the retaining nuts is 4.5 Nm (39 inch-pounds).



L/H Sequence



R/H Sequence

- Be sure the inner lip of the trunk weatherstrip is positioned back over top of the trunk liners as shown below.



- Start the vehicle and verify all the combination lamp functions operate properly to complete the repair.

TIPS:

- When reinstalling the left side trunk trim, always remember to reconnect the harness for the trunk release cancel switch.



Continued...

- When reinstalling the trunk threshold trim, put the trim in place but do not engage the hidden trim clips on the underside. This makes it easier to align the trim with the holes and reinstall the 3 retaining clips. Once those 3 clips are locked in, push down vertically on the trim to engage the hidden body fasteners locking the threshold trim in place.



WARRANTY / CLAIM INFORMATION

For vehicles within the Basic New Car Limited Warranty period, this repair may be claimed using the following information:

LABOR DESCRIPTION	LABOR OPERATION #	FAIL CODE	LABOR TIME
BOTH REAR COMBINATION LIGHT ASSEMBLIES R&R	A916-204	XCB-48	0.4