

ATTENTION:
 GENERAL MANAGER
 PARTS MANAGER
 CLAIMS PERSONNEL
 SERVICE MANAGER

IMPORTANT - All Service Personnel Should Read and Initial in the boxes provided, right.

| | | | | | |
|--|--|--|--|--|--|
| | | | | | |
| | | | | | |

© 2022 Subaru of America, Inc. All rights reserved.



QUALITY DRIVEN® SERVICE

SERVICE BULLETIN

APPLICABILITY: 2020-23MY Legacy & Outback
 2023MY Ascent

NUMBER: 07-213-22R

DATE: 11/16/22

SUBJECT: Genuine Battery Replacement

REVISED: 12/02/22

INTRODUCTION:

This bulletin announces a new Genuine Subaru Replacement battery for use in applications where the current SOA821B700 battery is specified. The new replacement battery (SOA821B900) has higher capacity but is also slightly larger dimensionally. When replacing an original equipped battery (SOA821B700) with the new SOA821B900, additional parts and slight modification will be required to ensure proper positioning and secure retention. Please refer to work procedures outlined below.

PART INFORMATION:

REMINDER: Always order the most up-to-date replacement parts based on the specific VIN being repaired.

| Part Description | Part Number |
|------------------|-------------|
| Battery | SOA821B900 |

| Part Description | Part Number |
|--|-------------|
| TRAY-BATTERY | 82122CA000 |
| ROD-BATTERY FIX | 82161SJ000* |
| HOLDER-BATTERY FIX | 82184SG000 |
| * The original rod nut must be retained for reuse. | |



EPDM Neoprene SBR Strip

2 in x 50 ft, 1/16 Thick, Black, Closed Cell , Smooth
 Item # 6YHD7

Available from Grainger® (or suitable equivalent available at most home improvement stores.)

(Self-adhesive EPDM foam taped for battery tray modification)

CAUTION: VEHICLE SERVICING PERFORMED BY UNTRAINED PERSONS COULD RESULT IN SERIOUS INJURY TO THOSE PERSONS OR TO OTHERS.

Subaru Service Bulletins are intended for use by professional technicians ONLY. They are written to inform those technicians of conditions that may occur in some vehicles, or to provide information that could assist in the proper servicing of the vehicle. Properly trained technicians have the equipment, tools, safety instructions, and know-how to do the job correctly and safely. If a condition is described, DO NOT assume that this Service Bulletin applies to your vehicle, or that your vehicle will have that condition.

Subaru of America, Inc. is ISO 14001 Compliant

ISO 14001 is the international standard for excellence in Environmental Management Systems. Please recycle or dispose of automotive products in a manner that is friendly to our environment and in accordance with all local, state and federal laws and regulations.

Continued...

SERVICE PROCEDURE / INFORMATION:

Please review the battery identification, charging, and testing information provided in Service Bulletin **07-178-21** prior to performing any battery testing and/or charging. **ALWAYS** confirm the Midtronics equipment being used has the latest software available.

IMPORTANT: The original battery holder, battery tray, and rear holding rod are to be returned to the customer.

STEP 1: Refer to the applicable Service Manual and review: General Description > Repair Contents > Action required before & after Battery Disconnect. Additionally, record any stored seat position(s) before proceeding. Relearn any seat position memory after work is complete. If the power rear gate (PRG) height has been customized, that position must also be noted and relearned.

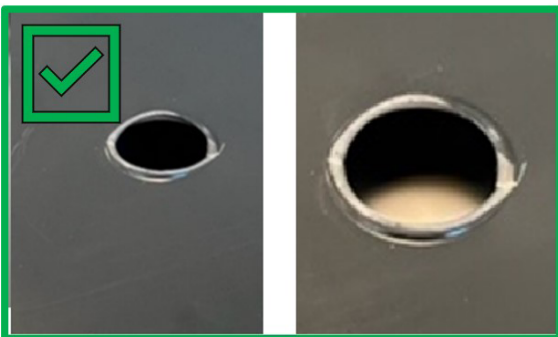
STEP 2: Remove the battery as per the applicable Service Manual: Engine > STARTING/CHARGING SYSTEMS > Battery > Removal.

STEP 3: Prepare the replacement battery tray (p.n. 82122CA000) for installation:

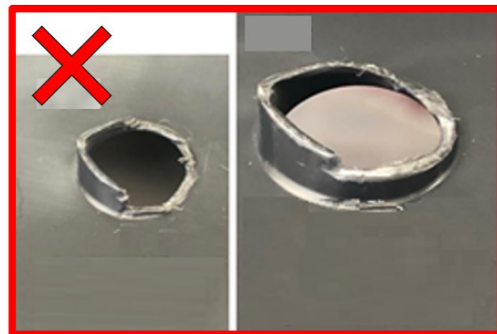
A. CAREFULLY cut off and trim the two protrusions on the bottom of the battery tray. This will allow a proper fit when installed. Try to make the cut as flush as possible.



CAUTION: Be sure the protrusions are trimmed flush. The remaining protrusion height **MUST** be less than 2mm to provide proper fitment.



Remaining Height Is Less Than 2mm



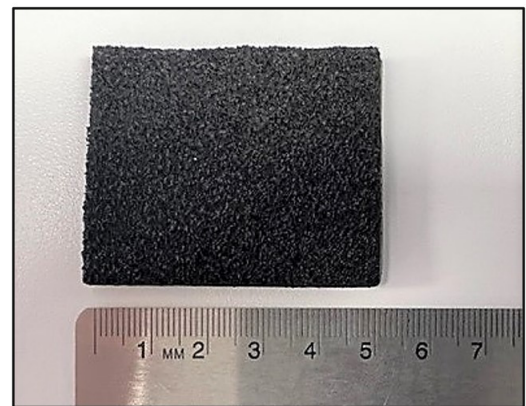
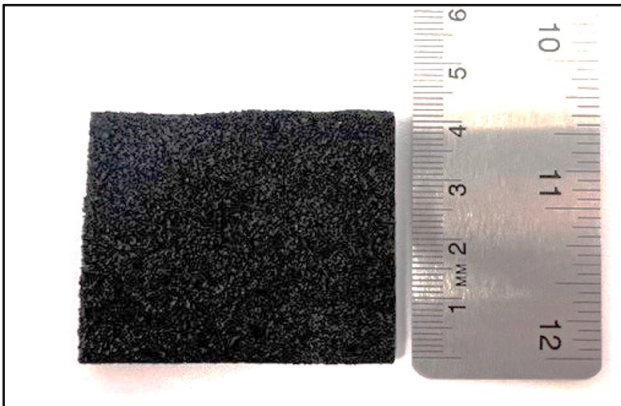
Remaining Height Is More Than 2mm

Continued...

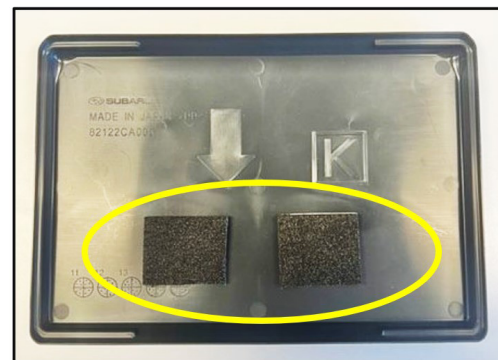
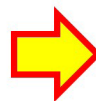
- B.** Remove and the original battery tray. **DO NOT** discard as this must be returned to the customer.



- C.** Prepare two pieces of EPDM neoprene sponge strip. Cut the sections approximately 40 mm tall and 50 mm wide. EPDM Neoprene SBR Strip (item # 6YHD7) supplied by Grainger was used in the example photos below.



- D.** Cover the newly made holes with the two previously prepared EPDM neoprene sponge strip pieces.



Continued...

E. Install the battery tray.



STEP 4: Install the original battery cover to the new replacement battery. Confirm the bottom of the cover is aligned flush with the bottom of the battery.



STEP 5: Assemble the new battery holder (p.n. 82184SG000), NEW rear holding rod (p.n. 82161SJ000), and the ORIGINAL front holding rod as shown below. The original rod nut can be transferred to the new rear holding rod.



IMPORTANT: DO NOT discard the original holder and rear rod. These parts are to be returned to the customer.

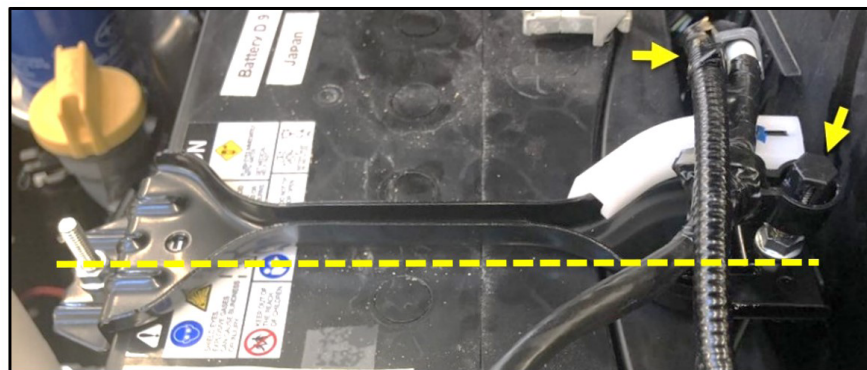
Continued...

STEP 6: Install the battery as per the applicable Service Manual: Engine > STARTING/CHARGING SYSTEMS > Battery > Installation

STEP 7: Install the battery holder and holding rods on to the battery.

- A. Torque the two holding rod mounting nuts to **3.5 N·m (2.6ft-lbs. or 31inch-lbs.)**.
- B. Torque the positive terminal to **6 N·m (4.4ft-lbs. or 53inch-lbs.)**.
- C. Torque the negative terminal to **7.5Nm (5.5ft.-lbs. or 66inch-lbs.)**.
- D. If the battery sensor is removed or disconnected torque to 7.5Nm (5.5ft.-lbs. or 66inch-lbs.) while supporting the sensor with the other hand as outlined in the applicable Service Manual under: STARTING/CHARGING SYSTEMS > Battery Sensor.

CRITICAL: Confirm the battery holder is center mounted with the battery cables secured and routed correctly.



WARRANTY / CLAIM INFORMATION:

For vehicles within the Basic New Car Limited Warranty period, this repair may be submitted using the following claim information:

| Labor Description | Labor Operation # | Labor Time | Fail Code |
|-----------------------------------|-------------------|------------|-----------|
| START-STOP BATTERY TEST & REPLACE | B800-002 | 0.5 | FFF-42 |
| ADD TIME; MOUNTING HARDWARE R&R | C800-055 | 0.2 | |

NOTES:

- Up to \$3.50 maximum may be charged out per repair in sublet to cover the cost of the EPDM foam tape.
- A valid battery test code or an authorization with reason *Leaking/cracked battery* **will** be required for Claim submission.

IMPORTANT REMINDERS:

- SOA strongly discourages the printing and/or local storage of service information as previously released information and electronic publications may be updated at any time.
- Always check for any open recalls or campaigns anytime a vehicle is in for servicing.
- Always refer to STIS for the latest service information before performing any repairs.