



Service Bulletin

Bulletin No.: 22-NA-179

Date: September, 2022

TECHNICAL

Subject: Right Rear Door Alignment

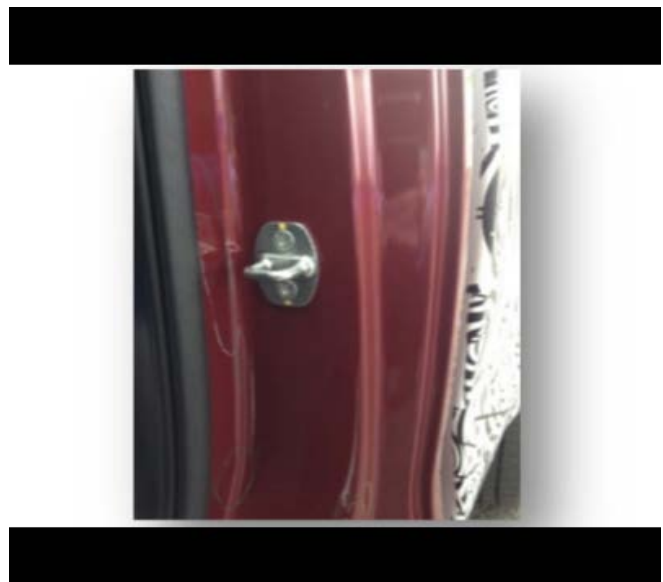
Brand:	Model:	Model Year:		VIN:		Engine:	Transmission:
		from	to	from	to		
Cadillac	Escalade Models	2021	2023				
Chevrolet	Suburban Tahoe Models						
GMC	Yukon Models						

Involved Region or Country	U.S., Canada, Mexico, Europe, Middle East
Additional Options (RPOs)	
Condition	Some customers may comment on the right rear door not sitting flush and/or the right rear door sticks out excessively at the bottom when closed.
Cause	The cause of the condition may be the door is in need of alignment.
Correction	Use the procedure below to help correct the above conditions.

Service Procedure

Important: Service agents must comply with all International, Federal, State, Provincial, and/or Local laws applicable to the activities it performs under this bulletin, including but not limited to handling, deploying, preparing, classifying, packaging, marking, labeling, and shipping dangerous goods. In the event of a conflict between the procedures set forth in this bulletin and the laws that apply to your dealership, you must follow those applicable laws.

If you encounter a vehicle with the above concern, complete the following



6146967



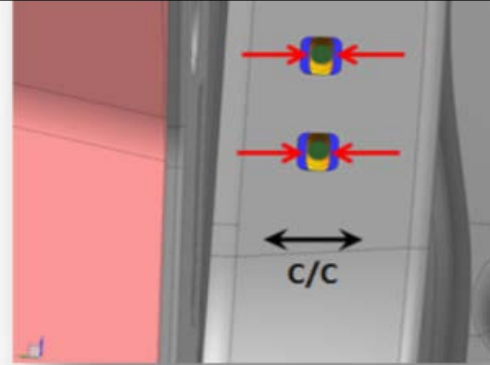
6146968

1. Open the door, get T45 bit and wrench and remove the striker on the door that can not be adjusted to spec. You need to remove the striker to gain access to the door striker net slots in the body.

Note: Utilize a 14 mm Reamer/drill bit - Hougen 14 mm RotaCut Part# 11214 with arbor Part# 11088 or equivalent.



6146969

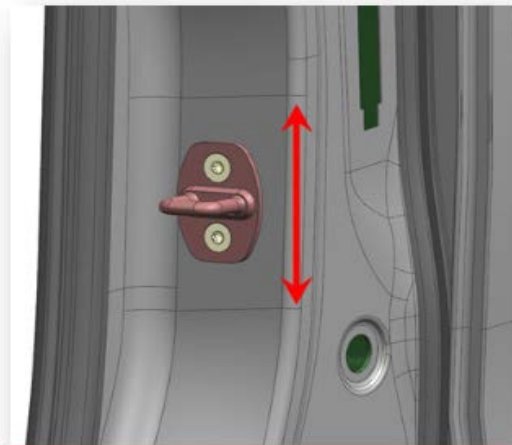


6146970

2. Attach the 14 mm drill/reamer bit to a cordless drill and carefully modify both upper and lower 8 mm wide slots of the anchor plate to 14 mm wide.

Note: The use of a vacuum during the drilling operation will prevent metal shavings from falling inside the bodyside and/or falling onto the rocker.

3. Remove any/all metal shavings from vehicle. Apply an Air Dry Primer to the raw edges.



6146971

4. Reinstall Striker and "initial" torque both bolts (striker should be snug to pillar)

Note: Make sure striker is parallel to bodyside and not rotated.

5. Close door and flush the door to mating panel. The "initial" torque will allow the striker to remain snug to bodyside but will allow the door latch to position the final location of striker.



6146972



6146973

- 6. Open door by holding the door flush and releasing O/S handle. Holding the door flush as you release the handle will prevent the latch from pulling the striker outboard.
- 7. Fully torque bolts to 25 Nm +/- 5 (18 lbs ft).

- 8. Using click wrench ratchet snug 1st striker bolt, fully run down and secure 2nd bolt, then return to first bolt and finish securing. Alternate torquing is recommended to prevent striker from rotating.

Parts Information

No parts are required for this repair.

Warranty Information

For vehicles repaired under the Bumper-to-Bumper coverage (Canada Base Warranty coverage), use the following labor operation. Reference the Applicable Warranties section of Investigate Vehicle History (IVH) for coverage information.

Labor Operation	Description	Labor Time
2086548*	Modify Stricker Spots and Adjust Door	0.6 hr

*This is a unique Labor Operation for Bulletin use only.

Version	1
Modified	Released September 02, 2022

