



TECHNICAL SERVICE BULLETIN

Seat Pan Looseness, Lateral Movement, And/Or Clunk/Thump Noise On Turns

22-2101

18 March
2022

This bulletin supersedes 21-2235.

Model:

Lincoln
2017-2020 Continental
2018-2022 Navigator

Summary

This article supersedes TSB 21-2235 to update the vehicle model years affected.

Issue: Some 2017-2020 Continental, 2018-2022 Navigator vehicles may experience seat pan looseness, lateral movement, and/or clunk/thump noise on turns. To correct the condition, follow the Service Procedure steps to install an isolator onto the front cross tube on both front seat tracks.

Action: Follow the Service Procedure steps to correct the condition on vehicles that meet all of the following criteria:

- One of the following vehicles:
 - 2017-2020 Continental
 - 2018-2022 Navigator
- Seat pan looseness, lateral movement, and/or clunk/thump noise on turns

Parts

Service Part Number	Quantity	Description	Unit of Issue	Piece Quantity
W527404-S300	1	3/8 Inch Wide Hose Clamp	4	4
Obtain Locally	4	3/4 Inch Heater Hose, 1 Inch Long		4

Quantity refers to the amount of the service part number required to repair the vehicle.

Unit of Issue refers to the number of individual pieces included in a service part number package.

Piece Quantity refers to the total number of individual pieces required to repair the vehicle.

Warranty Status: Eligible under provisions of New Vehicle Limited Warranty (NVLW)/Service Part Warranty (SPW)/Special Service Part (SSP)/Extended Service Plan (ESP) coverage. Limits/policies/prior approvals are not altered by a TSB. NVLW/SPW/SSP/ESP coverage limits are determined by the identified causal part and verified using the OASIS part coverage tool.

Labor Times

Description	Operation No.	Time
2017-2020 Continental, 2018-2022 Navigator: Install Heater Hose And Clamp On Both (2) Front Seats (Do Not Use With Any Other Labor Operations)	222101A	0.7 Hrs.

Repair/Claim Coding

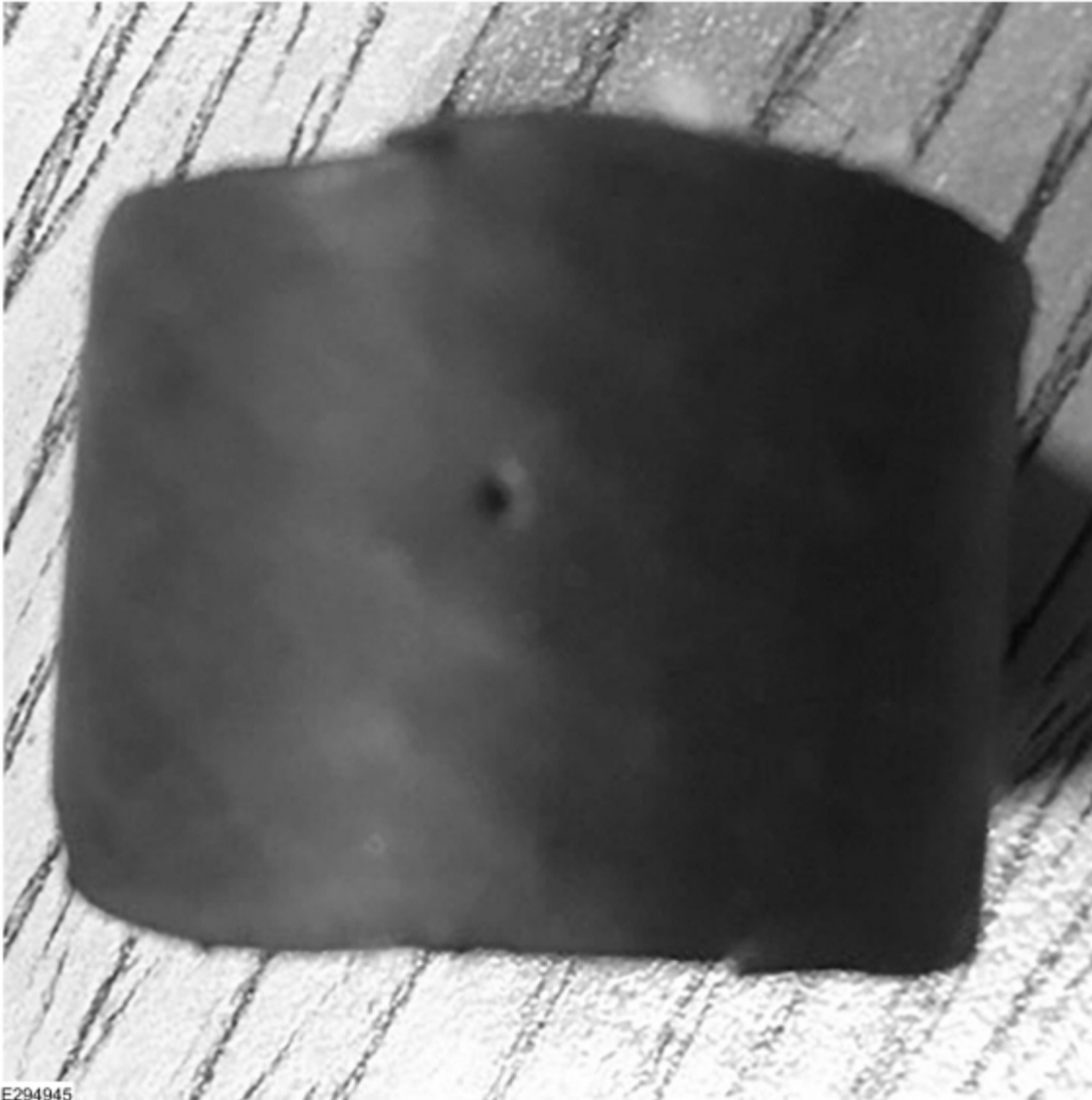
Causal Part:	9661711
Condition Code:	33

Service Procedure

1. Using both height and front tilt functions, adjust the seat to the highest position.

2. Remove the driver front seat module (DSM) and passenger front seat module (SCMB). Refer to Workshop Manual (WSM), Section 501-10A.
3. Remove the seat module mounting bracket.
4. Cut a 25.4 mm (1 in.) long piece of 19 mm (3/4 in.) diameter heater hose. (Figure 1)

Figure 1



E294945

5. Cut a slit in the 25.4 mm (1 in.) piece. (Figure 2)

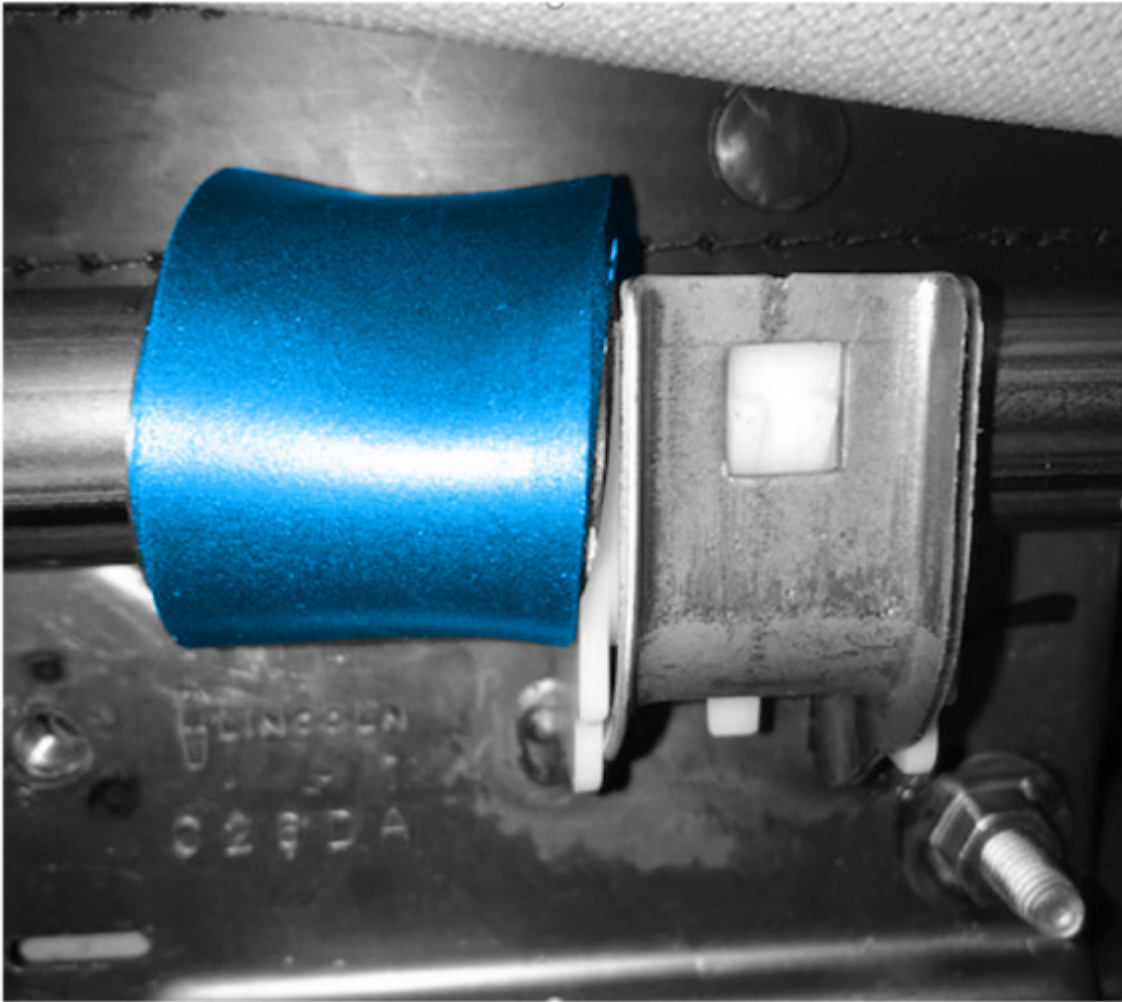
Figure 2



E294946

6. Install the hose over the front cross tube. (Figure 3)

Figure 3

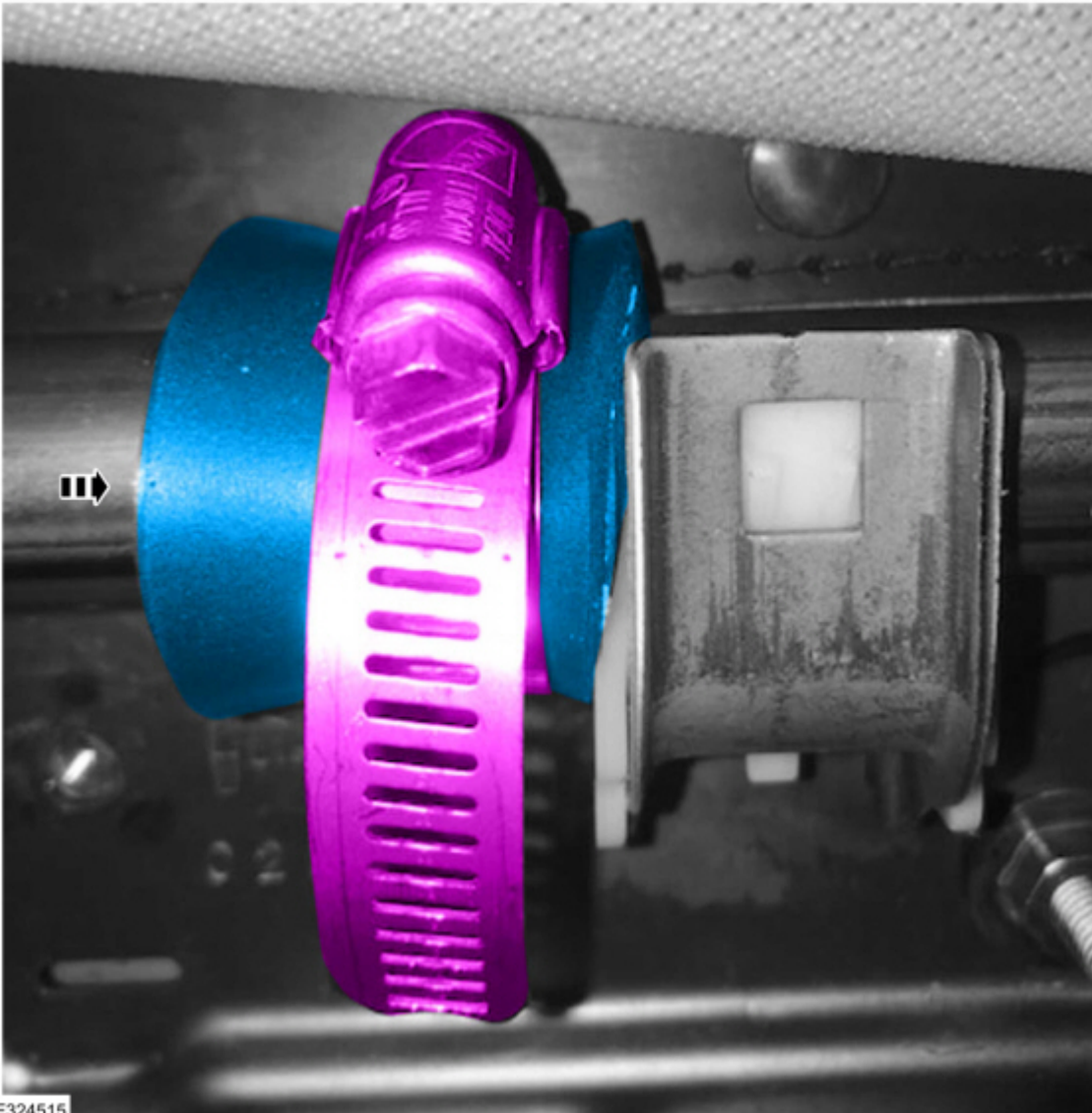


E324514

7. Open the hose clamp and slip the hose clamp over the heater hose, securing the heater hose to the front cross tube.

8. Push the heater hose against the cushion hook and tighten the hose clamp to 3.7 Nm (33 lb-in). (Figure 4)

Figure 4



E324515

9. Repeat Steps 4 through 8 on the other side of the seat track. (Figure 5)

Figure 5



E324516

10. Reinstall the DSM and SCMB and mounting bracket. Refer to WSM, Section 501-10A.

All rights reserved.

NOTE: The information in Technical Service Bulletins is intended for use by trained, professional technicians with the knowledge, tools, and equipment to do the job properly and safely. It informs these technicians of conditions that may occur on some vehicles, or provides information that could assist in proper vehicle service. The procedures should not be performed by "do-it-yourselfers". Do not assume that a condition described affects your car or truck. Contact a Ford or Lincoln dealership to determine whether the Bulletin applies to your vehicle. Warranty Policy and Extended Service Plan documentation determine Warranty and/or Extended Service Plan coverage unless stated otherwise in the TSB article. The information in this Technical Service Bulletin (TSB) was current at the time of printing. Ford Motor Company reserves the right to supersede this information with updates. The most recent information is available through Ford Motor Company's on-line technical resources.