

ATTENTION:

GENERAL MANAGER ☐

PARTS MANAGER ☐

CLAIMS PERSONNEL ☐

SERVICE MANAGER ☐

IMPORTANT - All
Service Personnel
Should Read and
Initial in the boxes
provided, right.

© 2021 Subaru of America, Inc. All rights reserved.



QUALITY DRIVEN® SERVICE

SERVICE BULLETIN

APPLICABILITY: 2020-22MY Legacy & Outback
2022MY WRX & BRZ

NUMBER: 15-289-21

DATE: 12/28/21

SUBJECT: Subaru STARLINK® Owner's Manual Correction
For Denso CP1 Gen 4 Systems

INTRODUCTION:

This Service Information Bulletin announces additional information for the Subaru STARLINK® Owner's Manual for models equipped with Denso CP1 Gen 4 systems. The current manual does not supply the steps for a situation when a customer wishes to connect Apple CarPlay and/or Android Auto to a device that previously has been answered with "NO" when prompted with the confirmation message in the CID. This message is prompted when a device is detected by a USB connection. If "No" is selected, the device will not be recognized by Apple CarPlay and/or Android Auto when connected in the future. The information below describes the procedure needed to change the device connection status.

PRODUCTION CHANGE INFORMATION:

This information has been incorporated into the Subaru Owner's Manual within the next revision.

**CAUTION: VEHICLE SERVICING PERFORMED BY UNTRAINED PERSONS COULD
RESULT IN SERIOUS INJURY TO THOSE PERSONS OR TO OTHERS.**

Subaru Service Bulletins are intended for use by professional technicians ONLY. They are written to inform those technicians of conditions that may occur in some vehicles, or to provide information that could assist in the proper servicing of the vehicle. Properly trained technicians have the equipment, tools, safety instructions, and know-how to do the job correctly and safely. If a condition is described, DO NOT assume that this Service Bulletin applies to your vehicle, or that your vehicle will have that condition.

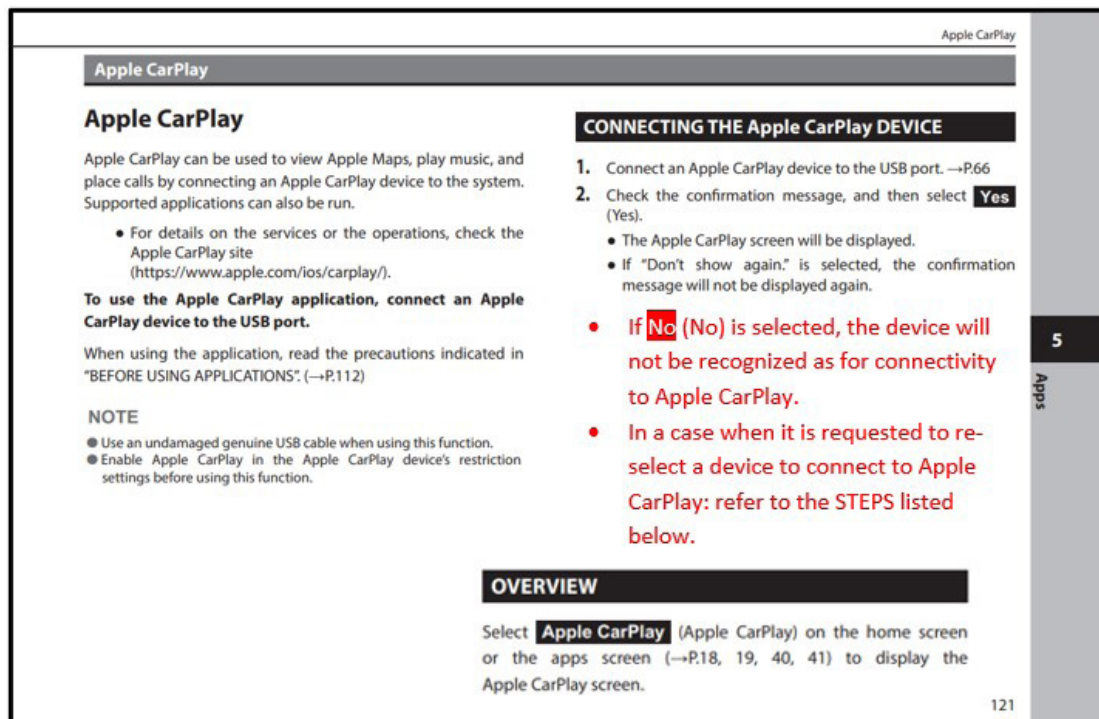
**Subaru of America, Inc. is
ISO 14001 Compliant**

ISO 14001 is the international standard for excellence in Environmental Management Systems. Please recycle or dispose of automotive products in a manner that is friendly to our environment and in accordance with all local, state and federal laws and regulations.

Continued...

Correction Details:

A - Apple CarPlay: Additional Information in RED. (Actual printed version will be different)



STEP 1) Select the Settings button from the home screen.

STEP 2) Select the Phone button from the top row.

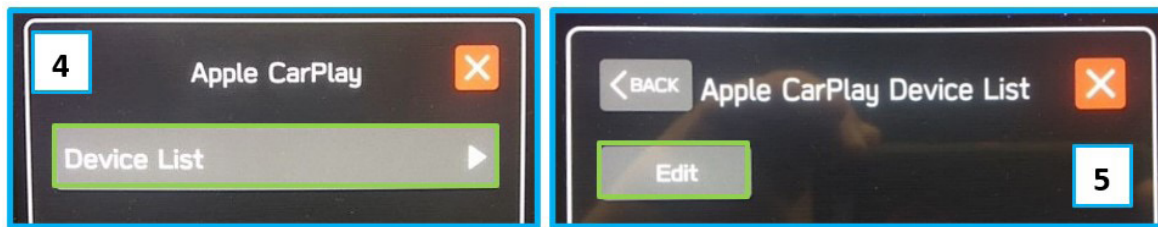
STEP 3) Select the Apple CarPlay arrow.



STEP 4) Select the Device List button.

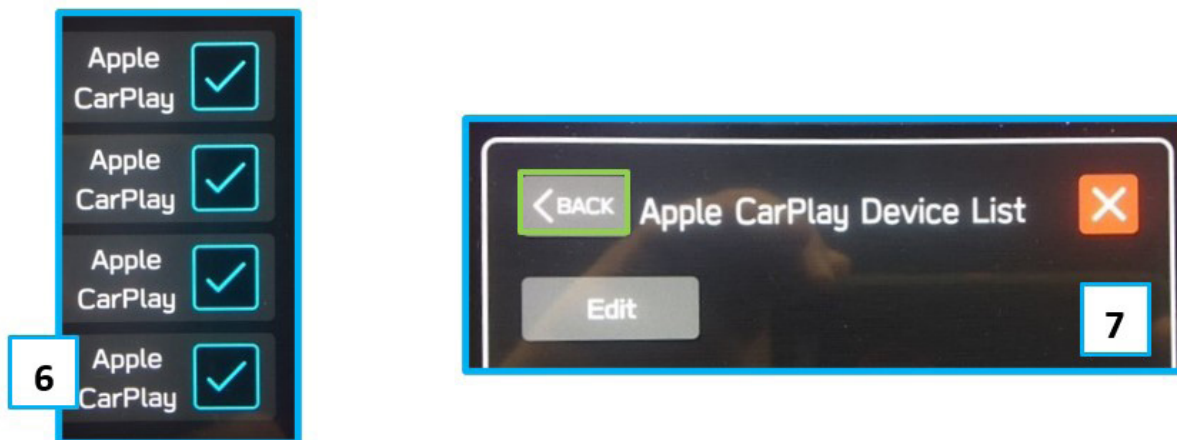
Continued...

STEP 5) Select the Edit button.

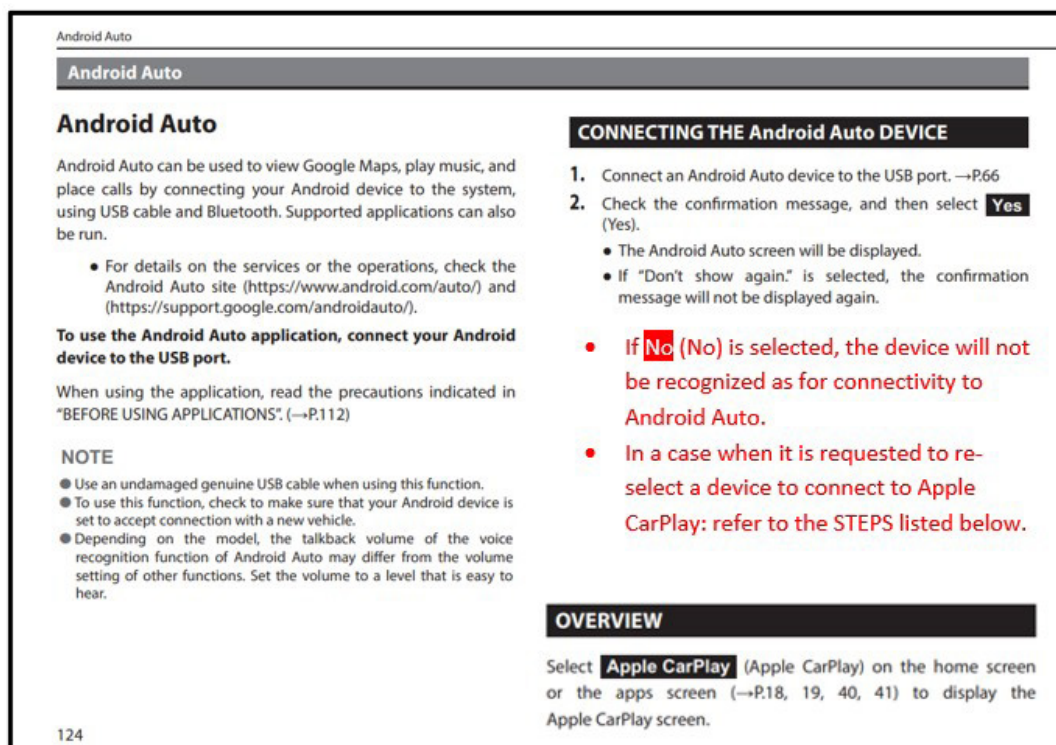


STEP 6) The desired connection can be customized by selecting and/or deselecting the devices listed on the check list that is displayed.

STEP 7) Select the BACK button when the desired selection is complete.



B - Android Auto: Additional Information in RED. (Actual printed will be different)

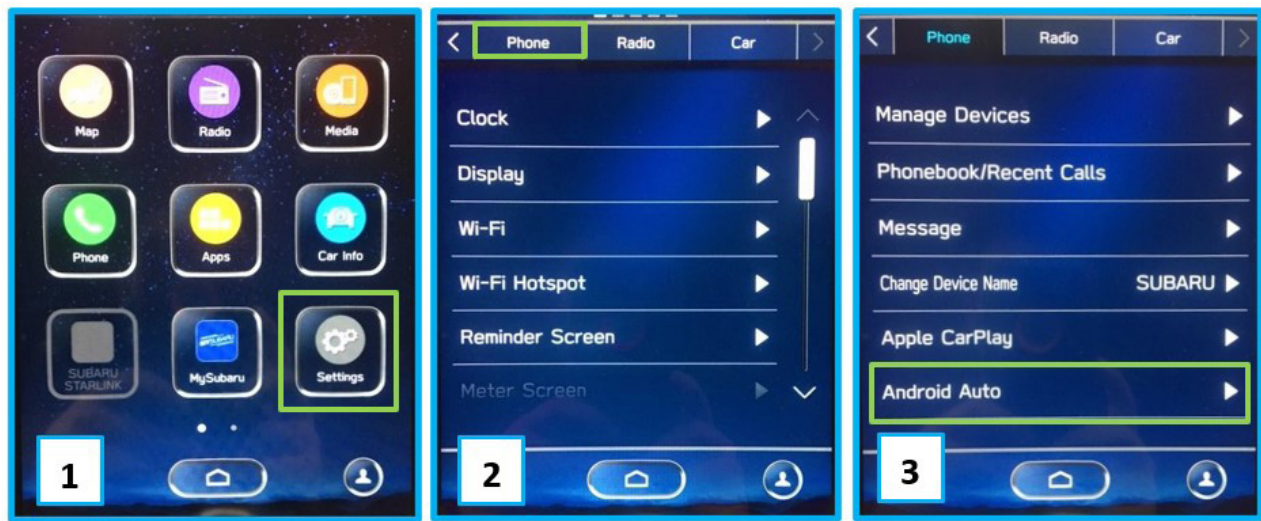


Continued...

STEP 1) Select the Settings button from the home screen.

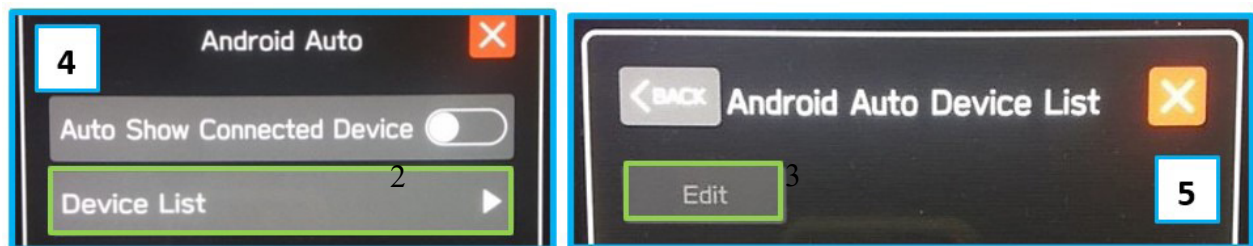
STEP 2) Select the Phone button from the top row.

STEP 3) Select the Android Auto arrow.



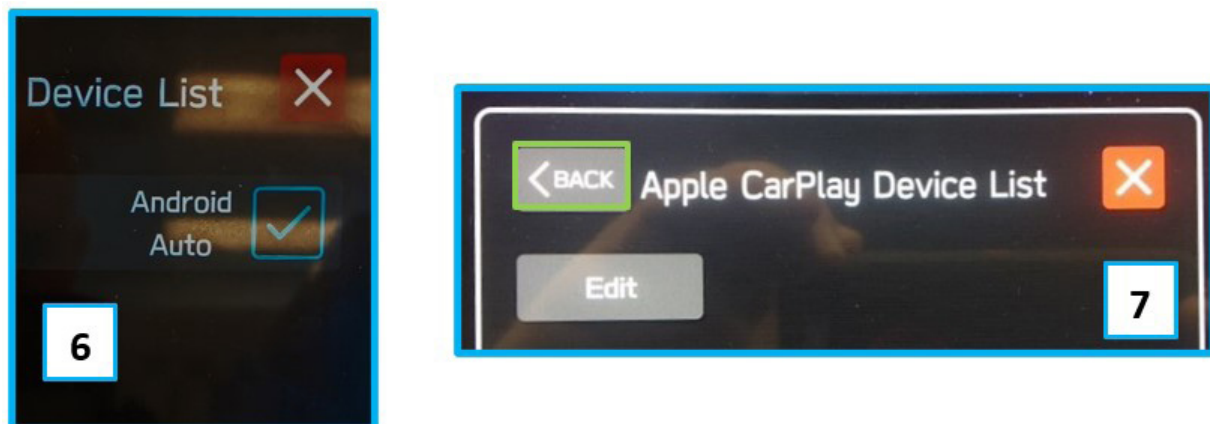
STEP 4) Select the Device List button.

STEP 5) Select the Edit button.



STEP 6) The desired connection can be customized by selecting and/or deselecting the devices listed on the check list that is displayed.

STEP 7) Select the BACK button when the desired selection is complete.



Continued...

IMPORTANT REMINDERS:

- SOA strongly discourages the printing and/or local storage of service information as previously released information and electronic publications may be updated at any time.
- Always check for any open recalls or campaigns anytime a vehicle is in for servicing.
- Always refer to STIS for the latest service information before performing any repairs.