



Preliminary Information


PIC6289B Noise from Exhaust Valves

Models

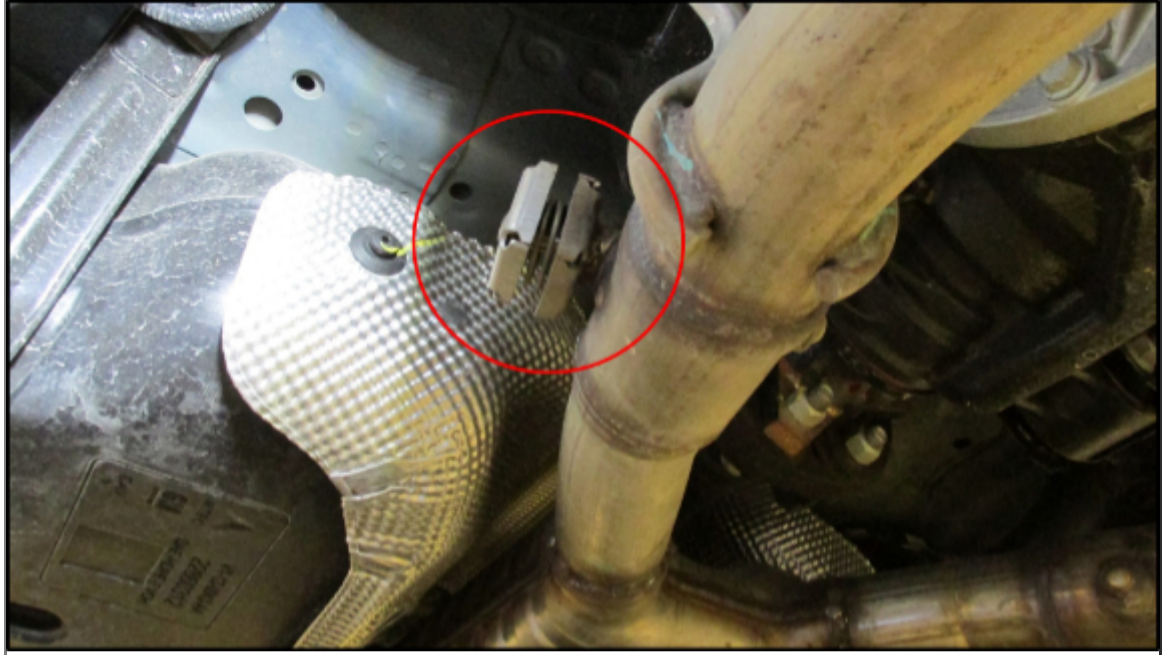
Brand:	Model:	Model Years:	VIN:		Engine:	Transmissions:
			from	to		
Chevrolet	Camaro	2016 - 2021	All	All	LGX, LT1, LT4	All

Supersession Statement

PIC6289B supersedes PIC6289A to Update Model Years. Please discard all copies of PIC6289A.

Involved Region or Country	United States, Canada, Mexico, United Kingdom, Sweden
Condition	Some customers may comment on a Check Engine Light (CEL) or an exhaust noise. Upon further inspection, dealership technicians may find a P12FD or a P12F0 set.
Cause	<p>This concern may be caused by an exhaust actuator that was installed but the learn procedure was not completed. This concern will occur on new vehicles with low mileage, or on vehicles that recently had service work done to the exhaust system.</p> <p>Note: This PIC is intended only for electronically controlled exhaust valves. Some vehicles are equipped with Passive Exhaust Valves (PEVs) that are purely mechanical in nature. They are spring operated and they are not able to be externally controlled. Photos of each type of valve can be seen in the two photos below:</p> <p>Electronically Operated Exhaust Valve</p> 

Mechanically Operated Exhaust Valve



Correction:

Dealership technicians are to relearn the Cylinder Deactivation Valves using GDS2 to resolve this concern. These valves are also referred to as the Active Fuel Management (AFM) valves. They are located before, or in front of, the muffler. Do not replace any parts for this concern.

Note: If the vehicle's battery becomes discharged or if it is disconnected for any reason, the Cylinder Deactivation Valves and/or Flow Control Valve relearn procedure may also need to be performed. If not, the exhaust valves may hunt or search for position and continue to make an audible noise.

Version History

Version	3
Modified	06/26/2017 - Created 02/08/2019 - Updated Model Years and Engine RPOs 6/15/2021 - Updated Model Years

