

June 30, 2021

Version 2

Driver's Seat Frame Noise

Supersedes 21-048, dated May 28, 2021, to revise the information highlighted in **yellow**.

AFFECTED VEHICLES

Year	Model	Trim Level	VIN Range
2018	Accord	EX	1HGCV1...JA232738 thru 1HGCV1...JA235194 1HGCV2...JA049936 thru 1HGCV2...JA052378
		Sport	1HGCV1...JA236698 thru 1HGCV1...JA269156 1HGCV2...JA048169 thru 1HGCV2...JA054592
		Touring	1HGCV1...JA246793 thru 1HGCV1...JA246794 1HGCV2...JA049468 thru 1HGCV2...JA054418
2019	Accord	EX	1HGCV1...KA000304 thru 1HGCV1...KA168430 1HGCV2...KA000639 thru 1HGCV2...KA032918
		Sport	1HGCV1...KA000909 thru 1HGCV1...KA169091 1HGCV2...KA000298 thru 1HGCV2...KA034716
		Touring	1HGCV2...KA000014 thru 1HGCV2...KA034770
2018	Accord Hybrid	EX-L	1HGCV3...JA012382 thru 1HGCV3...JA015128
		Touring	1HGCV3...JA007089 thru 1HGCV3...JA017116
2019	Accord Hybrid	EX	1HGCV3...KA000024 thru 1HGCV3...KA020829
		EX-L	1HGCV3...KA000128 thru 1HGCV3...KA020984
		Touring	1HGCV3...KA000066 thru 1HGCV3...KA020955

(continued on next page)

CUSTOMER INFORMATION: The information in this bulletin is intended for use only by skilled technicians who have the proper tools, equipment, and training to correctly and safely maintain your vehicle. These procedures should not be attempted by "do-it-yourselfers," and you should not assume this bulletin applies to your vehicle, or that your vehicle has the condition described. To determine whether this information applies, contact an authorized Honda automobile dealer.

AFFECTED VEHICLES (CONTINUED)

2018	CR-V	EX	2HKRW1...JH519064 thru 2HKRW1...JH523679 2HKRW2...JH677054 thru 2HKRW2...JH699914 5J6RW1...JL013496 thru 5J6RW1...JL017016 5J6RW2...JL028716 thru 5J6RW2...JL037692 5J6RW1...JA000274 thru 5J6RW1...JA014550 5J6RW2...JA000037 thru 5J6RW2...JA002730 7FARW1...JE049878 thru 7FARW1...JE057125 7FARW2...JE089576 thru 7FARW2...JE106250
		Touring	2HKRW1...JH519164 thru 2HKRW1...JH521486 2HKRW2...JH678837 thru 2HKRW2...JH695094 5J6RW1...JL013615 thru 5J6RW1...JL016540 5J6RW2...JL029223 thru 5J6RW2...JL037460 7FARW1...JE050189 thru 7FARW1...JE055383 7FARW2...JE089886 thru 7FARW2...JE102045
2019	CR-V	EX	2HKRW1...KH500094 thru 2HKRW1...KH509900 2HKRW2...KH600069 thru 2HKRW2...KH660211 5J6RW1...KL000068 thru 5J6RW1...KL007202 5J6RW2...KL000237 thru 5J6RW2...KL025852 5J6RW1...KA000194 thru 5J6RW1...KA047193 5J6RW2...KA000069 thru 5J6RW2...KA018251 7FARW1...KE000164 thru 7FARW1...KE031755 7FARW2...KE000073 thru 7FARW2...KE051641
		Touring	2HKRW1...KH500003 thru 2HKRW1...KH505676 2HKRW2...KH600009 thru 2HKRW2...KH659701 5J6RW1...KL000008 thru 5J6RW1...KL004115 5J6RW2...KL000001 thru 5J6RW2...KL025472 7FARW1...KE000183 thru 7FARW1...KE018870 7FARW2...KE000013 thru 7FARW2...KE050711
2019	Odyssey	LX	5FNRL6...KB036508 thru 5FNRL6...KB137894
		EX	5FNRL6...KB035708 thru 5FNRL6...KB138703
		Elite	5FNRL6...KB035808 thru 5FNRL6...KB126634
		Touring	5FNRL6...KB032754 thru 5FNRL6...KB126429
2020	Odyssey	LX	5FNRL6...LB000285 thru 5FNRL6...LB005445
		EX	5FNRL6...LB000586 thru 5FNRL6...LB005652
		Elite	5FNRL6...LB000011 thru 5FNRL6...LB005202
		Touring	5FNRL6...LB000047 thru 5FNRL6...LB005501

REVISION SUMMARY

Under AFFECTED VEHICLES, 2020 Odyssey and 2018 Accord Hybrid VINs were added. VIN ranges were updated throughout the rest of the list.

SYMPTOM

There is a whining, squeak, or squeal type noise coming from the driver's seat frame when adjusting the seat.

POSSIBLE CAUSE

There is insufficient grease applied to the Up-Down Motor nylon gear.

CORRECTIVE ACTION

Apply grease to the Up-Down Motor nylon gear.

REQUIRED MATERIALS

Part Name	Part Number	Quantity
MULTEMP SH-U Grease (1 container repairs 12 vehicles)	08798-9066	1

TOOL INFORMATION

Tool Name	Tool Number	Quantity
Prying Tool	Commercially available	1

WARRANTY CLAIM INFORMATION

The normal warranty applies.

Operation Number	Description	Flat Rate Time	Defect Code	Symptom Code	Template ID	Failed Part Number
8510B0	2018-19 Accord and 2019 Accord Hybrid Apply grease to the Up-Down Motor nylon gear.	0.3 hr	07409	03214	A21048A	81526-TVA-L11
	2018-19 CR-V Apply grease to the Up-Down Motor nylon gear.				A21048B	81526-TLA-A51
	2019 Odyssey Apply grease to the Up-Down Motor nylon gear.				A21048C	81526-THR-A83

Skill Level: Repair Technician

INSPECTION PROCEDURE

Move the seat to the upmost position. Lower the seat without anyone sitting on it and listen for any whining, squeak or squeal noises. If any noise is heard, move on to repair procedure.

REPAIR PROCEDURE

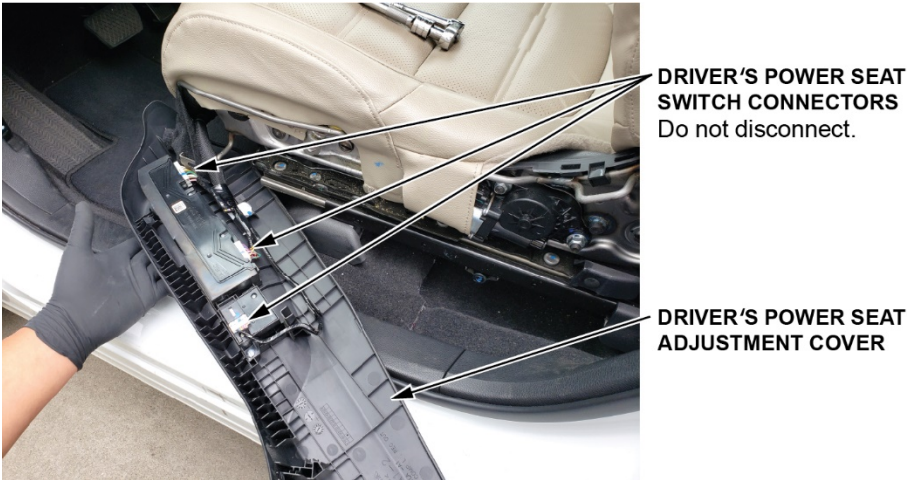
1. Move the driver's seat to its most forward and highest position.



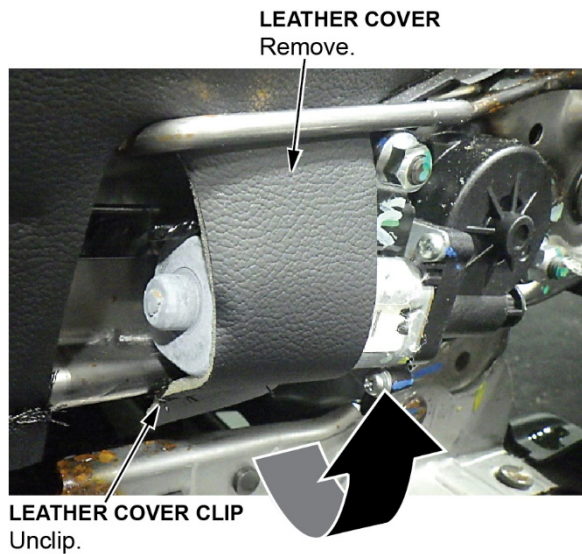
2. Remove the driver's power seat adjustment cover using the prying tool.



NOTE: Do not disconnect the power seat switch connectors.

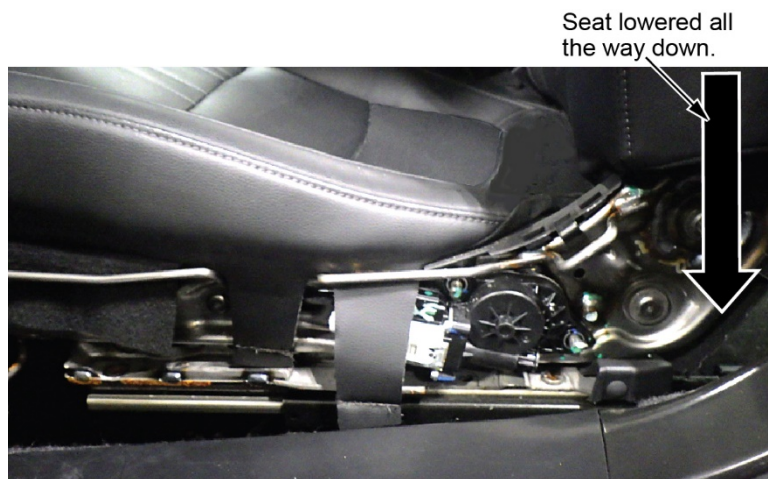


3. Remove the leather cover by detaching it from the bottom.

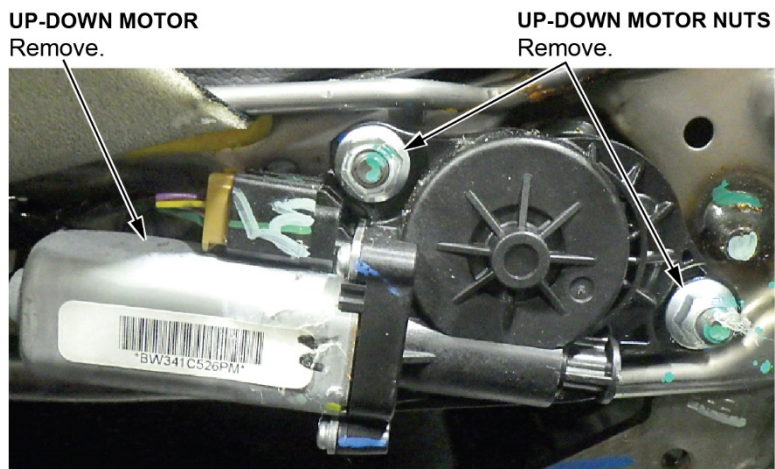


4. Using the power seat adjustment switch, move the seat down to the lowest point.

NOTE: This is important to gain access to the nylon gear.



5. Remove the Up-Down Motor nuts.



6. Remove the Up-Down Motor using the prying tool.

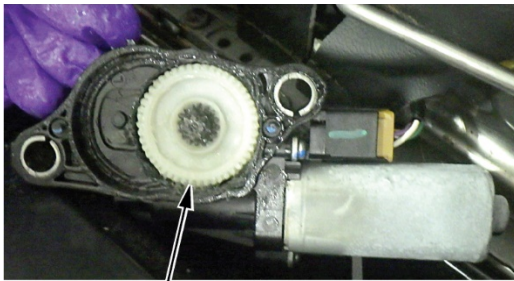
NOTE: Before removing the Up-Down Motor, move the seat down to the lowest point.



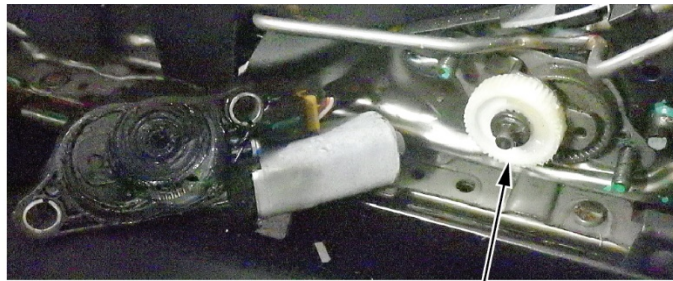
UP-DOWN MOTOR

PRYING TOOL

NOTE: When removing the Up-Down Motor, the nylon gear may come out with the motor or stay on the seat frame.



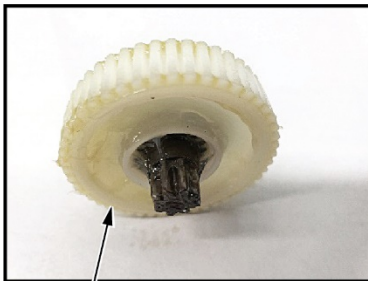
NYLON GEAR ON
UP-DOWN MOTOR



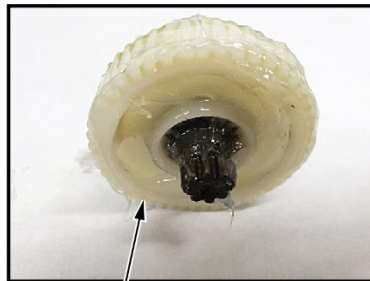
NYLON GEAR ON
SEAT FRAME

7. Remove the nylon gear and apply a layer of grease.

NOTE: Grease must be applied evenly to both metal and nylon teeth.



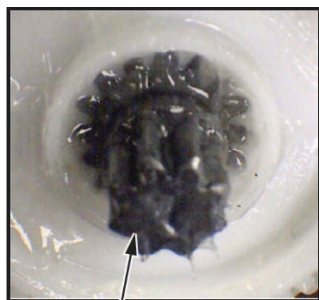
NYLON GEAR BEFORE
GREASE IS APPLIED



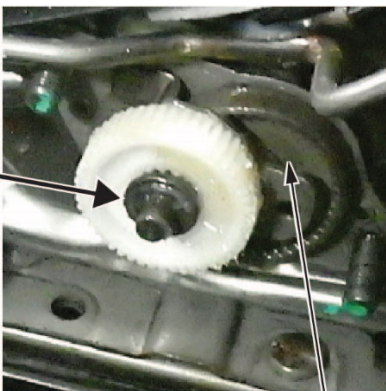
NYLON GEAR AFTER
GREASE IS APPLIED TO
METAL AND NYLON TEETH

8. Install the nylon gear to the seat frame.

NOTE: The metal teeth of the nylon gear must be aligned with the seat frame teeth when reinstalling. The nylon gear should be flush with the frame.



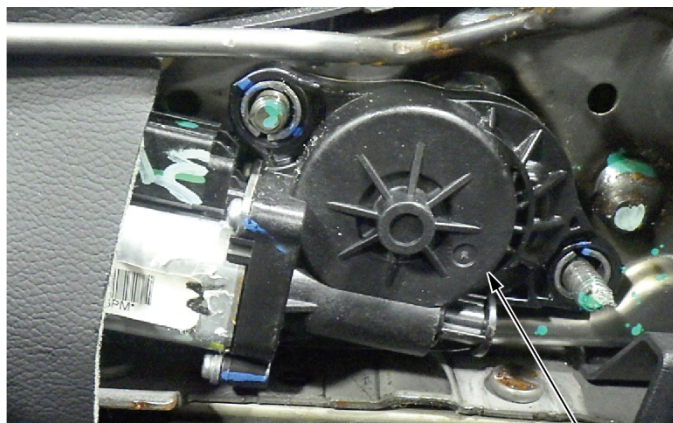
NYLON GEAR METAL
TEETH



SEAT FRAME

9. Install the Up-Down Motor to the seat frame.

NOTE: Install slowly to make sure the gears fit together.

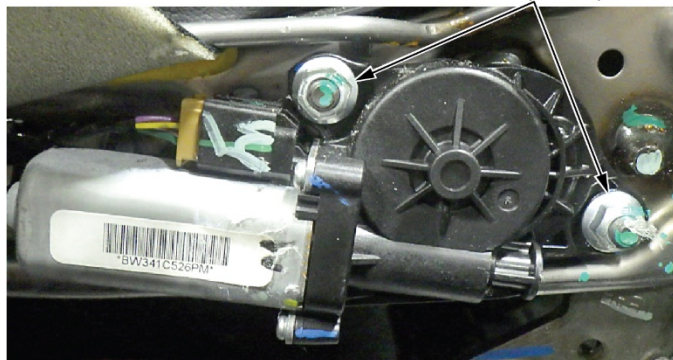


UP-DOWN MOTOR

10. Torque both nuts to **19 N·m (14 lb-ft)**.

NOTE: Do not overtighten nuts.

UP-DOWN MOTOR NUTS
19 N·m (14 lb-ft)



11. Operate the seat to confirm proper function, and that the noise is not present.

12. Install all removed parts in the reverse order.

END