

Product Update: Electric Power Steering (EPS) Software Update

Supersedes 15-055, dated September 28, 2018; See Revision Summary

AFFECTED VEHICLES

Year	Model	Trim Level	VIN Range
2013-14	Accord	ALL	Check the iN VIN status for eligibility.
2014	Accord Plug-In Hybrid	ALL	Check the iN VIN status for eligibility.
2014	Accord Hybrid	ALL	Check the iN VIN status for eligibility.

REVISION SUMMARY

The Mongoose Pro Interface tool had been superseded to the Mongoose Plus 2 Interface Tool; both units support this product update. Tool and software information, as well as updated images reflecting the new software have been added. American Honda recommends you read this entire bulletin.

BACKGROUND

When a failure is detected, the EPS control unit goes into back-up mode. The new software provides partial assist during back-up mode.

CUSTOMER NOTIFICATION

Owners of affected vehicles have been sent a notification of this campaign.

Do an iN VIN status inquiry to make sure the vehicle is shown as eligible.

Some vehicles affected by this campaign may be in your used vehicle inventory. Repair these vehicles before they are sold.

CORRECTIVE ACTION

Use the i-HDS and the Mongoose Pro / Plus Honda Interface Tool to update the EPS software.

TOOL INFORMATION

Tool Name	Part Number	Quantity
Mongoose Pro Honda Interface Tool	DRWMGPHON	1
Mongoose Plus-Honda 2 Interface Tool	DRWMGPHONA	1

NOTE: The Mongoose Pro Honda Interface Tool is no longer available to order, but still supports this product update. Order the Mongoose Plus-Honda 2 Interface Tool if you do not have either.

CUSTOMER INFORMATION: The information in this bulletin is intended for use only by skilled technicians who have the proper tools, equipment, and training to correctly and safely maintain your vehicle. These procedures should not be attempted by "do-it-yourselfers," and you should not assume this bulletin applies to your vehicle, or that your vehicle has the condition described. To determine whether this information applies, contact an authorized Honda automobile dealer.

SOFTWARE INFORMATION

NOTE: Unnecessary or incorrect repairs resulting from a failure to update the i-HDS are not covered under warranty.

i-HDS Software Version:

J2534 EPS Update: 5.05

NOTE: Supported driver software is automatically deployed within the i-HDS software suite. There is no need to download the driver from "Opus - Drew Technologies."

EPS Rewrite application – Supported Interface Tools			
Interface Tool Name	Installer version	Driver version	Mongoose Firmware
Drew Technologies Mongoose Pro Honda	1.0.14.0	1.7.7.0	1.4.14.0
Drew Technologies Mongoose-Plus Honda 2	1.0.14.0	1.0.11.0	0.1.8.0

Year/Model	Program ID	Program Part number	CM Part Number
2013-14 Accord 4-Door LX L4	39990-T2F-A020	39990-T2F-3050	39980-T2F-A014
2013-14 Accord Sport	39990-T2F-A810	39990-T2F-3070	39980-T2F-A814
2013-14 Accord 4-Door EX, EX-L, L4	39990-T2F-A920	39990-T2F-3060	39980-T2F-A914
2013-14 Accord 4-Door EX, EX-L, Touring, V6	39990-T2G-A910	39990-T2G-3050	39980-T2G-A914
2013-14 Accord 2-Door EX- L, L4	39990-T3L-A010	39990-T3L-3050	39980-T3L-A014
2013-14 Accord 2-Door EX- L, V6	39990-T3M-A910	39990-T3M-3050	39980-T3M-A914
2014 Accord Plug-In	39990-T3V-A030	39990-T3V-3050	39980-T3V-A013
2014 Accord Hybrid	39990-T3Z-A020	39990-T3Z-3050	39980-T3Z-3050

WARRANTY CLAIM INFORMATION

Operation Number	Description	Flat Rate Time	Defect Code	Symptom Code	Template ID	Failed Part Number
5135A7	Update the EPS control unit software.	0.3 hr	5ZS00	JT500	15-055A	39980-T2F-A91

Skill Level: Repair Technician

BEFORE GETTING STARTED

NOTE:

- Connect a fully charged jumper battery to the vehicle and leave it connected during the entire procedure to maintain steady voltage.
- Never turn the ignition to OFF or ACCESSORY. If there is a problem with the update, leave the ignition turned to ON.
- To prevent EPS control unit damage, do not operate anything electrical (headlights, audio system, brakes, A/C, power windows, door locks, etc.) during the update.

DIAGNOSIS

Connect the i-HDS and check for DTCs in the EPS system.

- If DTC 53-01 torque sensor (low/high check) or DTC 53-02 torque sensor (average check) is stored, complete this bulletin and refer to SB 15-056, *Warranty Extension: EPS Torque Sensor (DTC 53-01 or DTC 53-02)* to replace the steering gear box.
- If DTC 53-01 or DTC 53-02 is not stored, go to REPAIR PROCEDURE.

REPAIR PROCEDURE

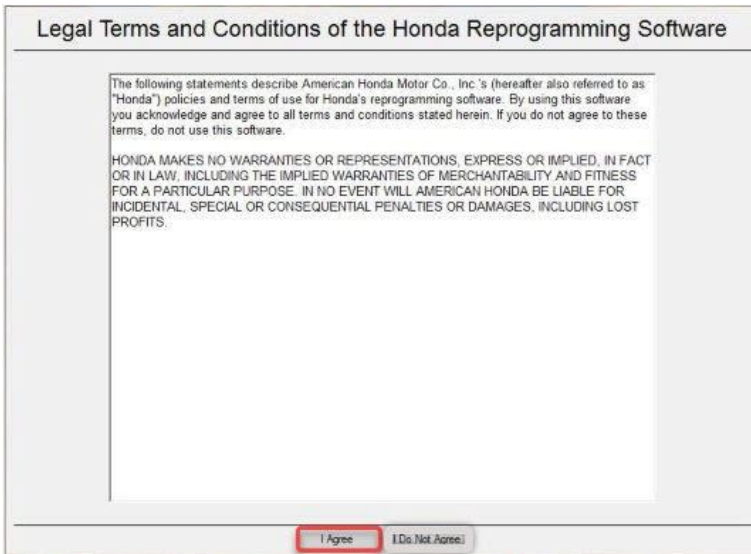
Updating the EPS with the Mongoose Pro / Plus Honda Interface Tool.

NOTE:

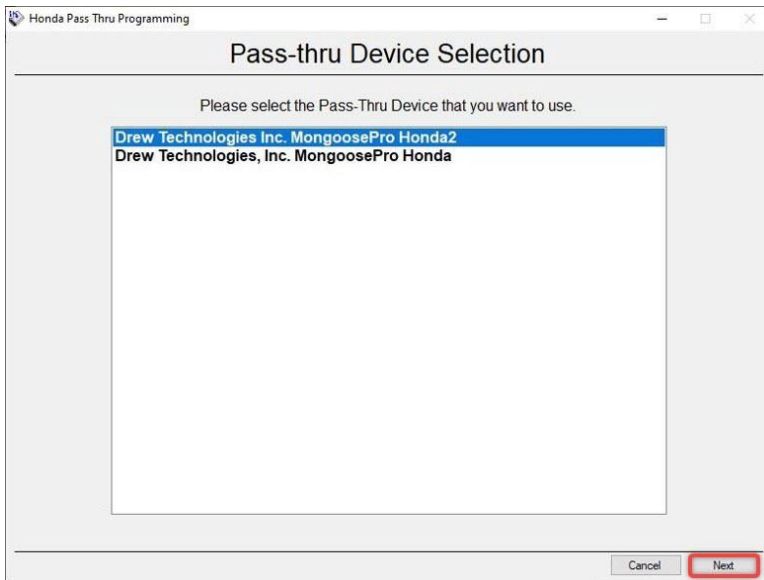
- Make sure you have the latest software loaded to your PC. Run the Honda Download Manager to confirm the latest software.
 - During the software update, DO NOT turn off the ignition to OFF. Doing so during the update will damage the control unit.
1. Connect a jumper battery to the vehicle and leave it connected during the entire procedure to maintain a steady voltage.
 2. Connect the Mongoose Pro / Plus Honda Interface Tool between the PC and the vehicle's DLC.
 3. Select the EPS Rewrite Icon on your PC.



4. Select **I Agree**.

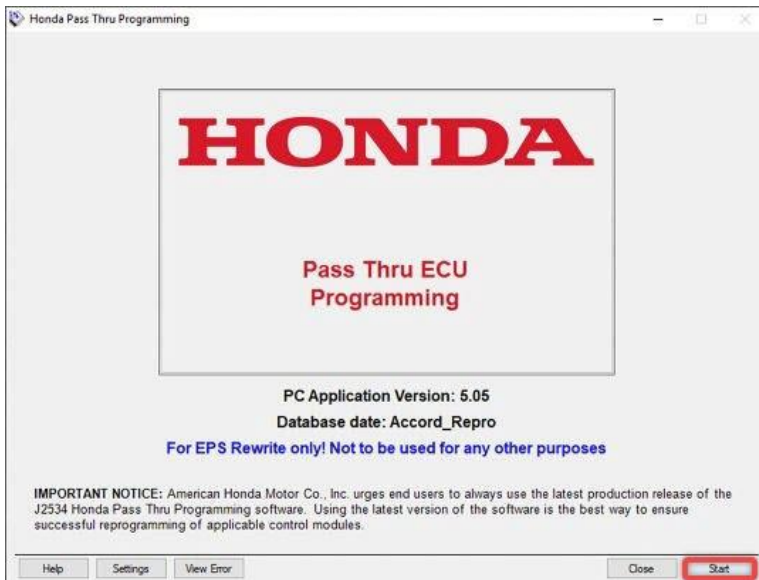


5. Select **Next** in the Pass-thru Device Selection screen.

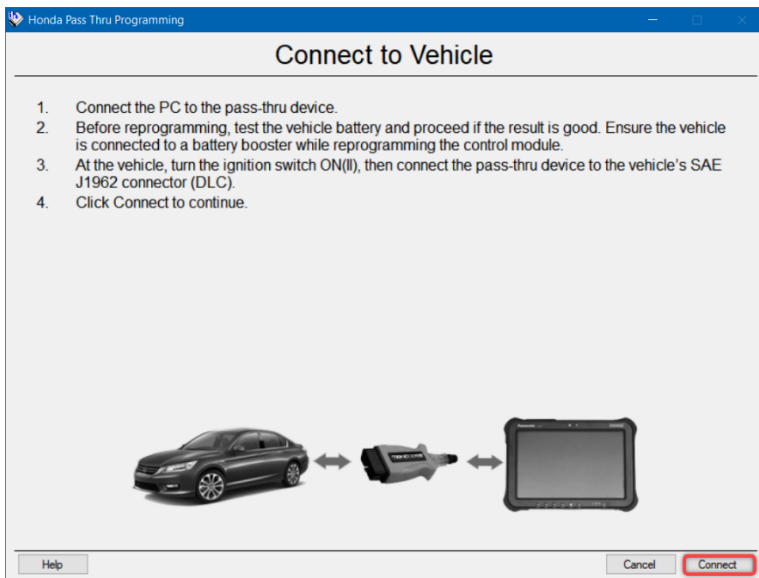


NOTE: If you are using the Mongoose Plus Interface Tool, be sure to select "Drew Technologies, Inc. MongoosePro Honda2" or the interface tool will not connect.

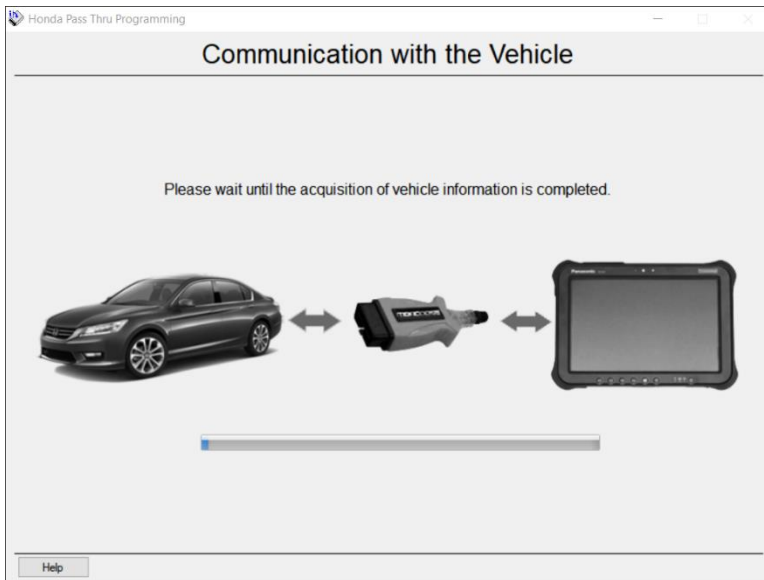
6. Select **Start**.



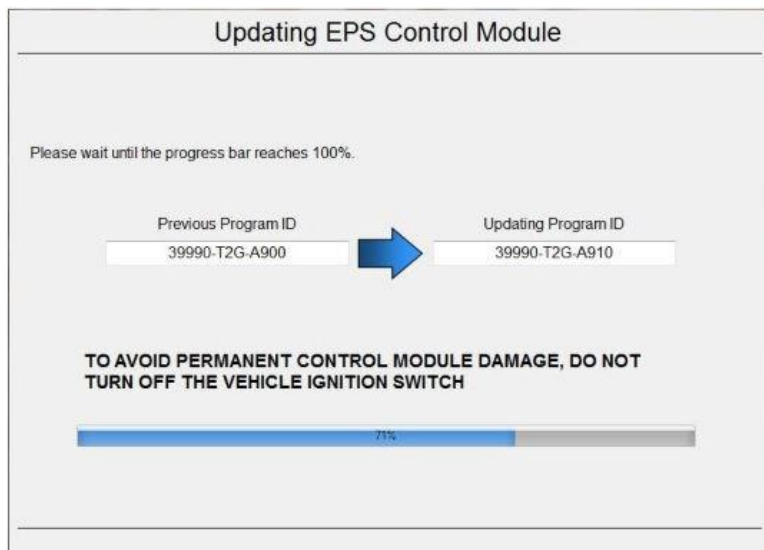
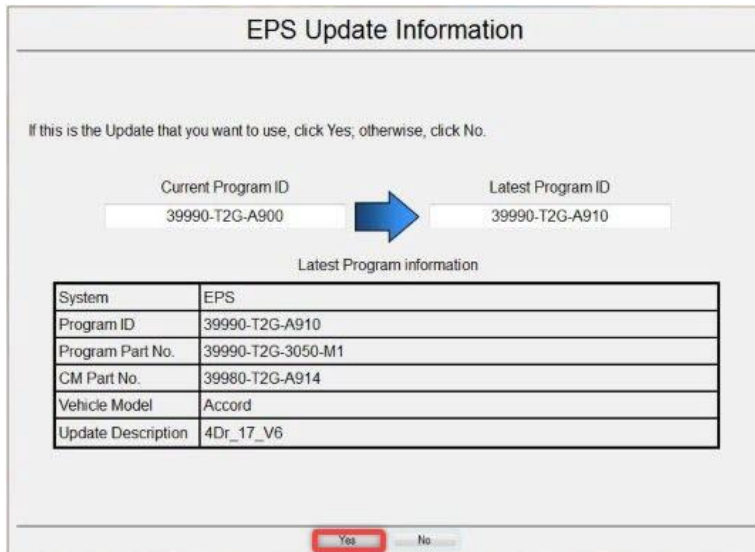
7. Select **Connect**.



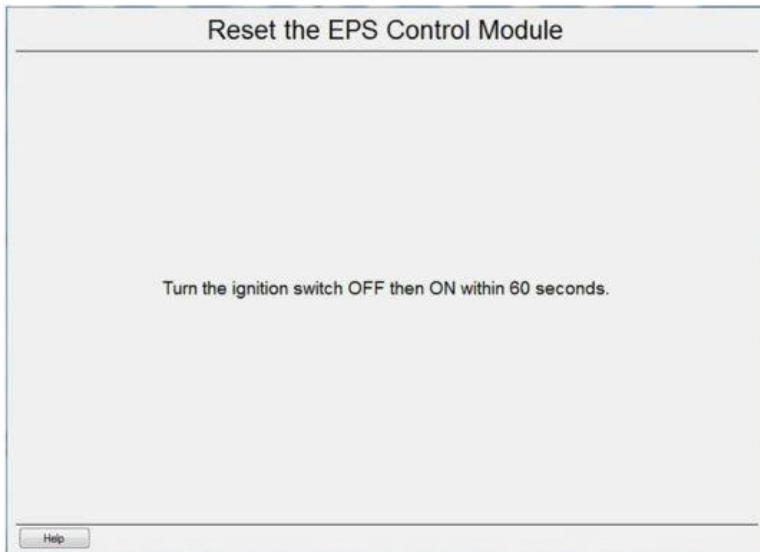
8. You will see the **Communication with the Vehicle** screen.



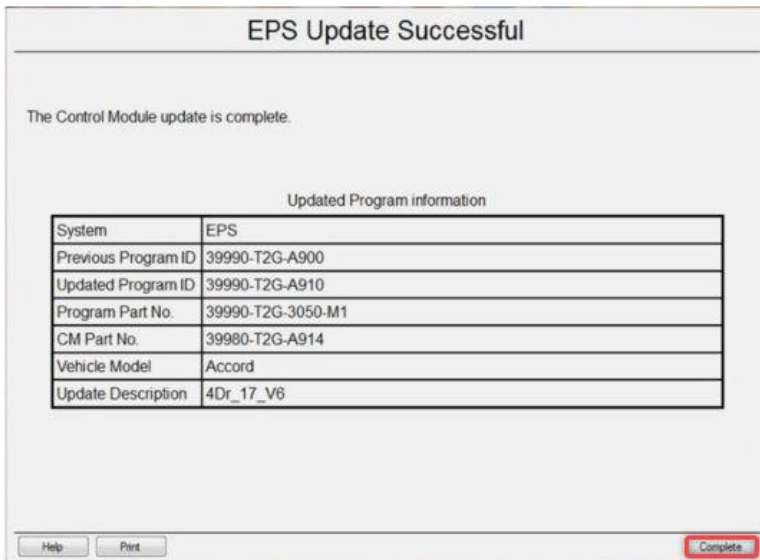
9. Wait for the **EPS Update Information** screen to appear. Select **Yes**. The update will start and the screen will show a loading bar.



10. Turn the ignition to OFF, then to ON within 60 seconds to complete the updating procedure



11. The EPS Update Successful screen appears. Select **Complete**, then disconnect the Mongoose Pro / Plus Honda Interface Tool.



END