

2/19/2019  
CAL FTL 54-001

## **Subject: Powertrain PDM and Main PDM Bracket Modification**

### **Models Affected: Business Class M2, and 108SD/114SD**

Our records indicate that you are the owner of certain vehicles, and DTNA has decided to share the following documentation with you.

This procedure moves the current PTPDM mounting location on the underhood PDM bracket, and replaces it with a frontwall-mounted PTPDM bracket.

**IMPORTANT:** Service Bulletin 54-285 will no longer apply.

Please see the attached communication in this email. We hope you find this information helpful.

2/19/2019  
CAL - 54-001

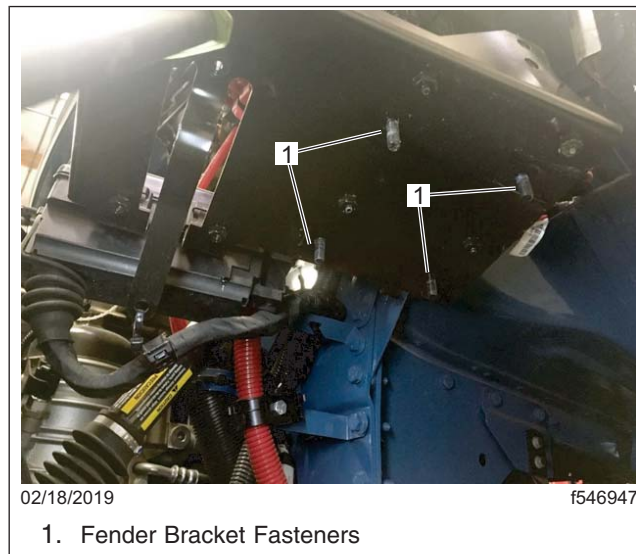
## Work Instructions

### Subject: Powertrain PDM and Main PDM Bracket Modification

Models Affected: Business Class M2, and 108SD/114SD

## Work Instructions

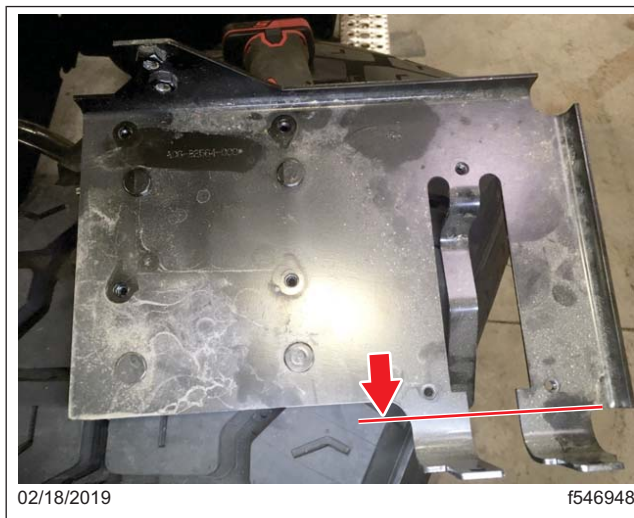
1. Park the vehicle, shut down the engine, and set the parking brakes. Chock the tires.
2. Disconnect batteries.
3. Open the hood and remove the fasteners attaching the powertrain power distribution module (PTPDM) fender bracket to the quarter fender, then remove the left quarter fender. See [Fig. 1](#).



**Fig. 1, Quarter Fender Fasteners**

4. Remove both the PTPDM and underhood PDM from the bracket.
5. Using a die grinder, cut along the line shown in [Fig. 2](#) to remove the PTPDM mounting tabs.

2/19/2019  
CAL - 54-001



**Fig. 2, Cutting the PTPDM Bracket Mounting Tabs**

6. Remove the top two cab mount bolts from the cab and harness clipping bracket. See [Fig. 3](#).



**Fig. 3, Cab Mount Bolts**

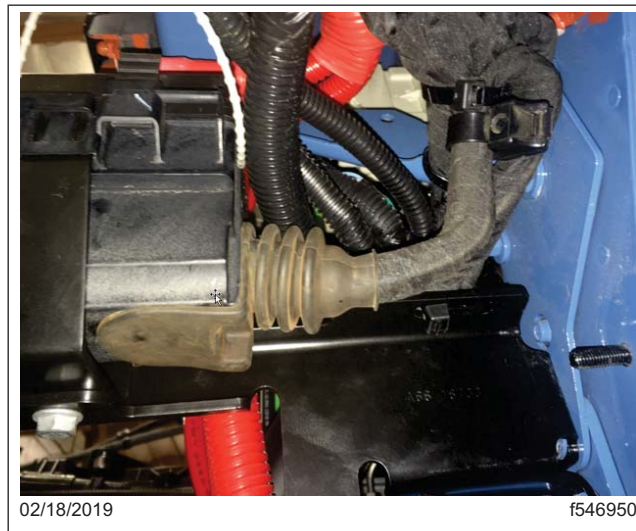
7. Attach the PTPDM bracket on the cab, using the previously removed bolts. Torque the bolts to 33 lbf·ft (44 N·m). See [Fig. 4](#).

2/19/2019  
CAL - 54-001



**Fig. 4, New PTPDM Bracket Installation**

8. Position the PTPDM wiring harness, as needed, so that it exits the PTPDM housing horizontally. See [Fig. 5](#). Position the rubber grommet back into PTPDM housing.



**Fig. 5,**

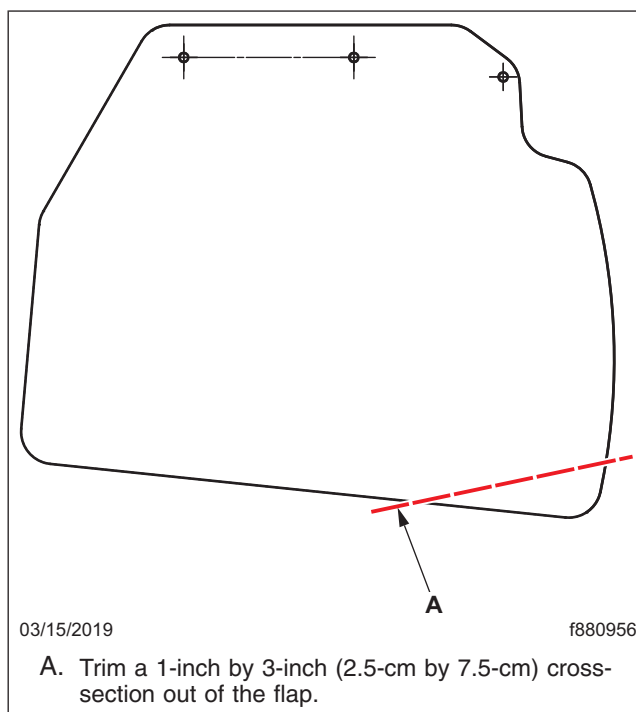
9. Route the PTPDM harness over the new bracket, and along the existing frontwall harnesses to allow room for the PTPDM.
10. Install the PTPDM onto the new frontwall bracket, securing the harnesses with zip ties, as needed.
11. Install the underhood PDM onto the quarter fender PDM Bracket.
12. Install the quarter fender onto the cab using the original fasteners, then attach the PDM bracket to the quarter fender. Secure the harnesses with zip ties, as needed. See [Fig. 6](#).

2/19/2019  
CAL - 54-001



**Fig. 6, Quarter Fender and PTPDM Installed on the Vehicle**

13. Close the hood and check for proper clearance. If there is insufficient clearance, trim a 1-inch by 3-inch (2.5-cm by 7.5-cm) cross-section out of the flap. See [Fig. 7](#).



**A. Trim a 1-inch by 3-inch (2.5-cm by 7.5-cm) cross-section out of the flap.**

**Fig. 7, Checking for Clearance**

14. Connect the batteries.