



# Service Bulletin

Bulletin No.: 21-NA-075

Date: April, 2021

## TECHNICAL

**Subject: Front Door Upper Speaker Faint Hiss or Whistle Noise**

Brand:	Model:	Model Year:		VIN:		Engine:	Transmission:
		from	to	from	to		
Cadillac	XT5 XT6	2021	2021				

<b>Involved Region or Country</b>	United States, Canada, Mexico, China and Middle East.
<b>Additional Options (RPOs)</b>	Equipped with Bose Performance Series 14-speaker system (UQP)
<b>Condition</b>	Some customers may comment of a light hiss or faint whistling wind-like noise from the front door upper speakers.
<b>Cause</b>	The cause of the condition may be an amplifier software anomaly.
<b>Correction</b>	Reprogram the amplifier software.

### Service Procedure

**Caution:** Before downloading the update files, be sure the computer is connected to the internet through a network cable (hardwired). DO NOT DOWNLOAD or install the files wirelessly. If there is an interruption during programming, programming failure or control module damage may occur.

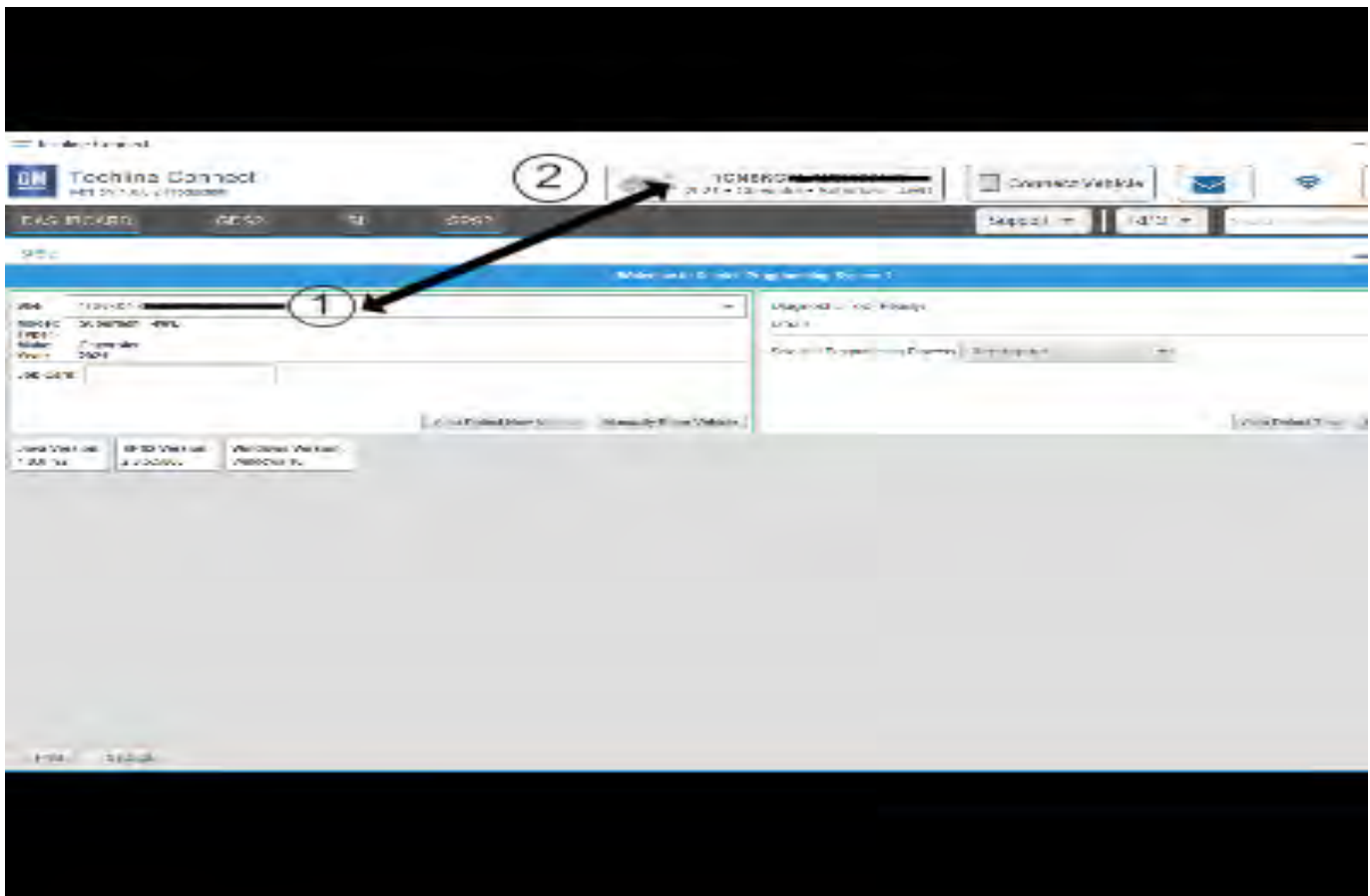
**Note:** Carefully read and follow the instructions below.

- Ensure the programming tool is equipped with the latest software and is securely connected to the data link connector. If there is an interruption during programming, programming failure or control module damage may occur.
- Stable battery voltage is critical during programming. Any fluctuation, spiking, over voltage or loss of voltage will interrupt programming. Install a GM Authorized Programming Support Tool to maintain system voltage. Refer to [www.gmdesolutions.com](http://www.gmdesolutions.com) for

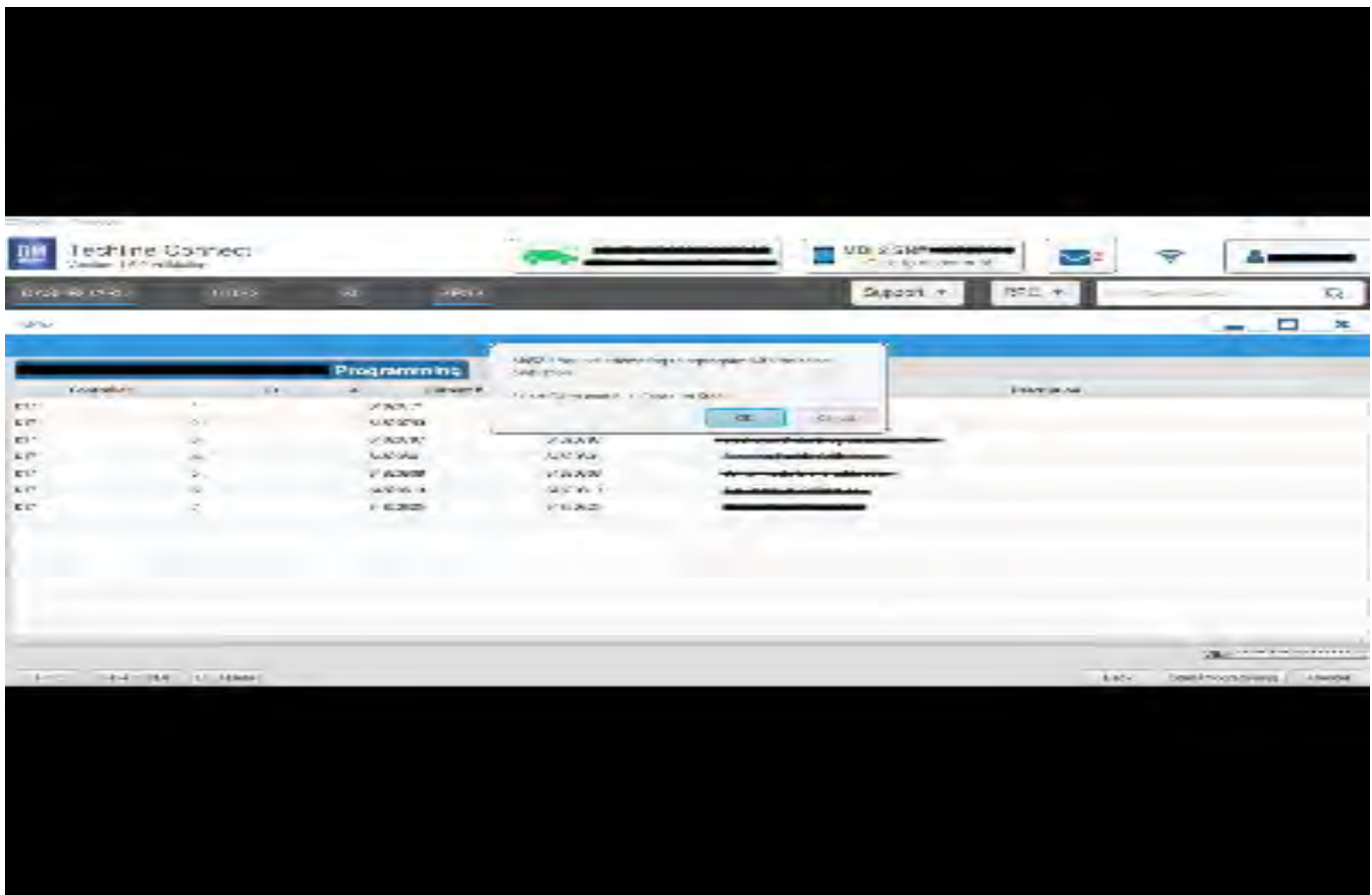
further information. If not available, connect a fully charged 12 V jumper or booster pack disconnected from the AC voltage supply. DO NOT connect a battery charger.

- Turn OFF or disable systems that may put a load on the vehicles battery such as; interior lights, exterior lights (including daytime running lights), HVAC, radio, etc.
- Please verify that the radio time and date are set correctly before inserting USB drive into vehicle for programming, otherwise an error will result..
- Clear DTCs after programming is complete. Clearing powertrain DTCs will set the Inspection/ Maintenance (I/M) system status indicators to NO.

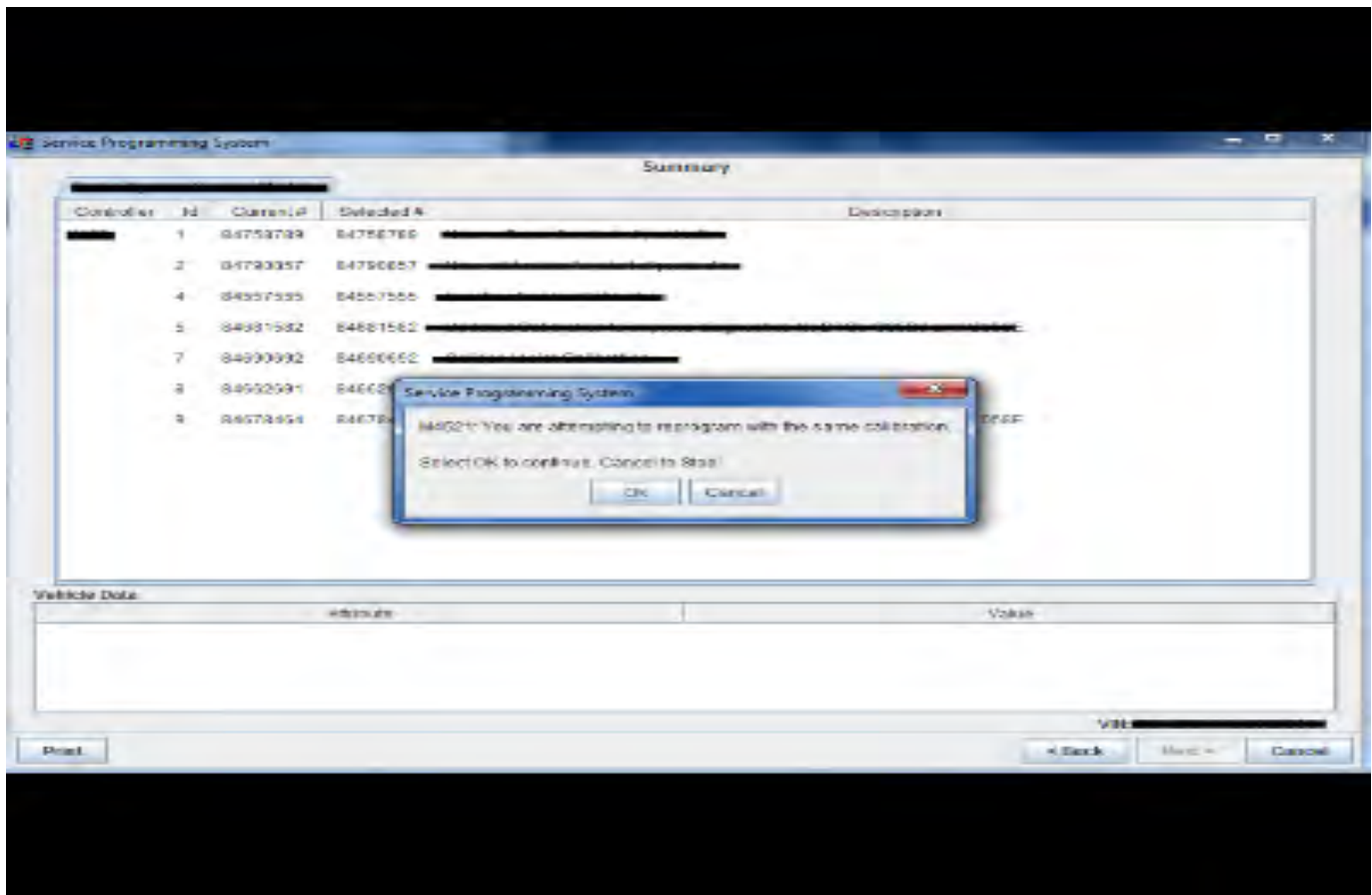
**Caution:** Be sure the VIN selected in the drop down menu (1) is the same as the vehicle connected (2) before beginning programming.



5743643



5644477



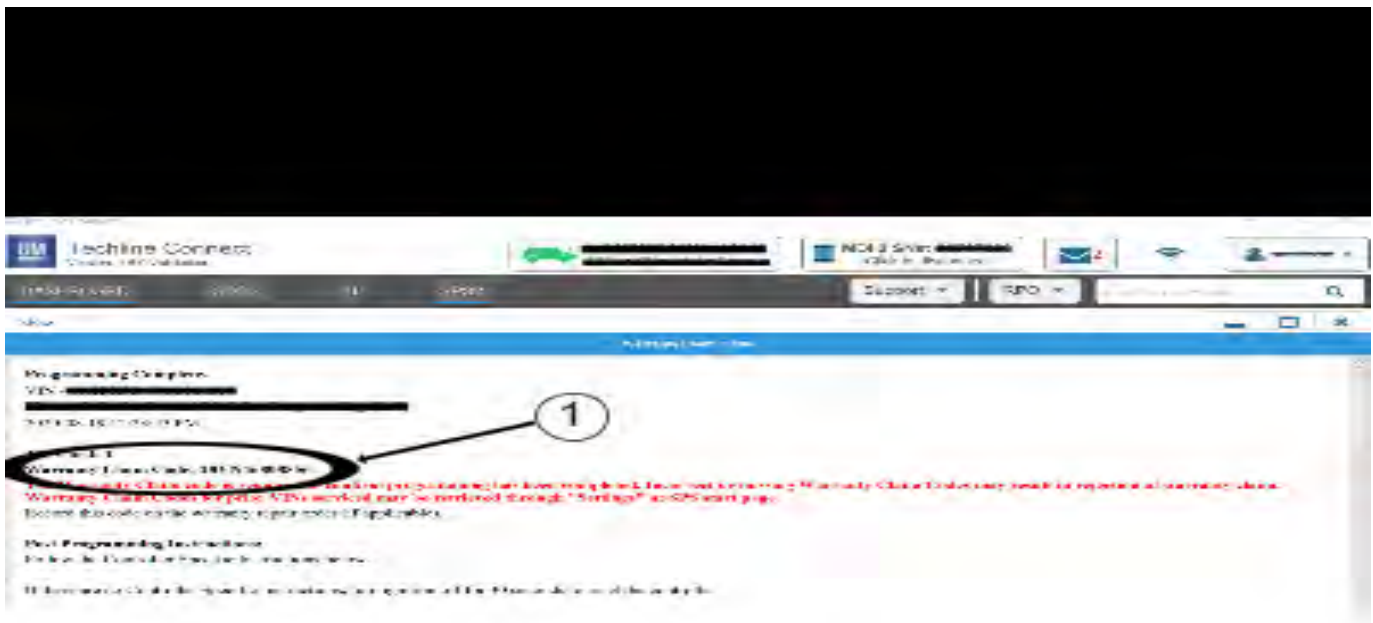
5431207

**Important:** Techline Connect and TIS2WEB screens shown above.

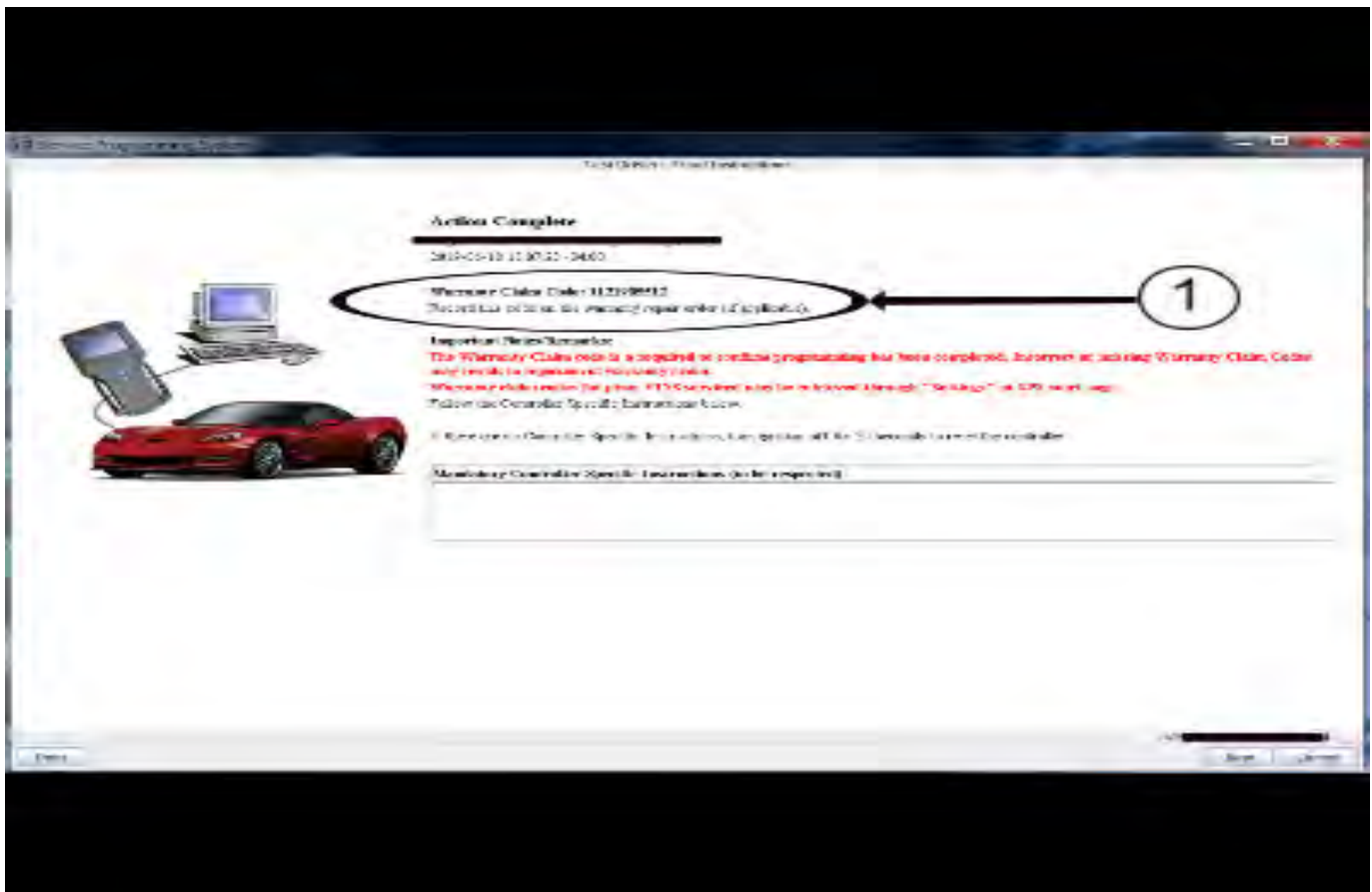
**Important:** If the Same Calibration/Software Warning is noted on the TLC or SPS Summary screen, select OK and follow on-screen instructions. The system will generate a warranty claim code (WCC) for documentation purposes only. Perform service information (SI) diagnostics to determine the cause of the condition. Use the applicable labor operation code when submitting a warranty claim. Do NOT use the WCC with the warranty claim submission.

**Important:** When programming a module in GM's new Vehicle Intelligence Platform, or VIP, the power mode (ignition) needs to be off or errors may occur. This involves the 2020 Chevrolet Corvette, Cadillac CT5 and CT4, as well as the upcoming full-size Chevrolet, GMC, Cadillac SUVs and Buick Envision. Serial Data Message Authentication also needs to have the ignition off.

1. Reprogram the T3 Audio Amplifier. Refer to *T3 Audio Amplifier: Programming and Setup* in SI.



5644478



5431209

**Note:** The screenshots above are an example of module programming and may not be indicative of the specific module that is being programmed. Module selection and VIN information have been blacked out.

**Important:** To avoid warranty transaction rejections, you **MUST** record the warranty claim code provided on the SPS Warranty Claim Code (WCC) screen shown above on the job card. Refer to callout 1 above for the location of the WCC on the SPS screen

- Record SPS Warranty Claim Code on job card for warranty transaction submission.

## Warranty Information

For vehicles repaired under warranty, use:

Labor Operation	Description	Labor Time
*2811485	T3 Audio Amplifier Reprogramming with SPS	Use Published Labor Operation Time
<p><b>Important:</b> *To avoid warranty transaction rejections, carefully read and follow the instructions below:</p> <ul style="list-style-type: none"> <li>The Warranty Claim Code must be accurately entered in the "SPS Warranty Claim Code" field of the transaction.</li> <li>When more than one Warranty Claim Code is generated for a programming event, it is required to document all Warranty Claim Codes in the "Correction" field on the job card. Dealers must also enter one of the codes in the "SPS Warranty Claim Code" field of the transaction, otherwise the transaction will reject. It is best practice to enter the FINAL code provided by SPS/SPS2.</li> </ul>		

### Warranty Claim Code Information Retrieval

If the SPS Warranty Claim Code was not recorded on the Job Card, the code can be retrieved in the SPS system as follows:

- Open TLC/TIS on the computer used to program the vehicle.
- Select and start SPS/SPS2.
- Select Settings.
- Select the Warranty Claim Code tab.

The VIN, Warranty Claim Code and Date/Time will be listed on a roster of recent programming events. If the code is retrievable, dealers should resubmit the transaction making sure to include the code in the SPS Warranty Claim Code field.

Version	1
Modified	Released March 29, 2021

