



# Service Bulletin


Bulletin No.: 21-NA-008

Date: January, 2021

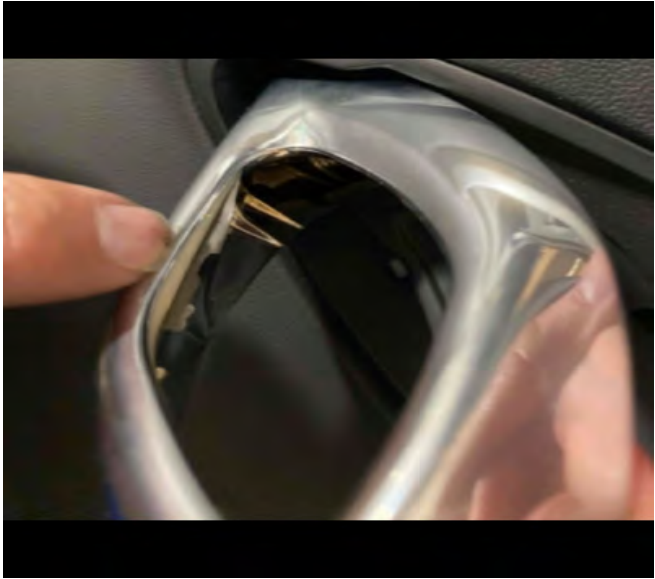
## TECHNICAL

**Subject: Chrome Peeling Off Interior Door Handle**

| Brand:    | Model: | Model Year: |      | VIN: |    | Engine: | Transmission: |
|-----------|--------|-------------|------|------|----|---------|---------------|
|           |        | from        | to   | from | to |         |               |
| Chevrolet | Camaro | 2016        | 2020 | —    | —  | All     | All           |

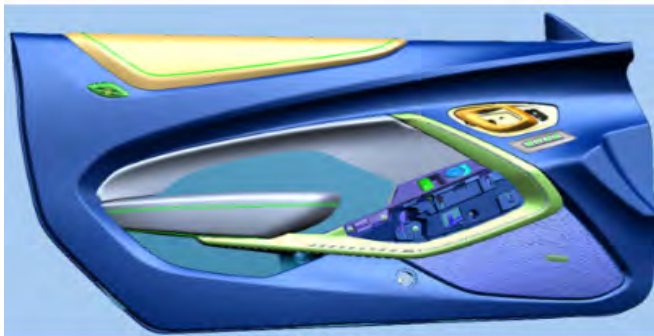
|                                   |  |
|-----------------------------------|--|
| <b>Involved Region or Country</b> | North America, Europe, Russia, Middle East, Israel, Argentina, Brazil, Bolivia, Chile, Colombia, Ecuador, Paraguay, Peru, Uruguay, Japan, GM Korea Company, China, Taiwan, Philippines |
| <b>Condition</b>                  |   |

5701164

|                          |   |
|--------------------------|---|
|                          |  <p style="text-align: right;">5701165</p> <p>Some customers may comment that the chrome is starting to peel off from the interior door handle.</p> |
| <p><b>Cause</b></p>      | <p>The cause of the condition may be the parting line coming apart.</p>   |
| <p><b>Correction</b></p> | <p>Replace the door handle.</p>   |

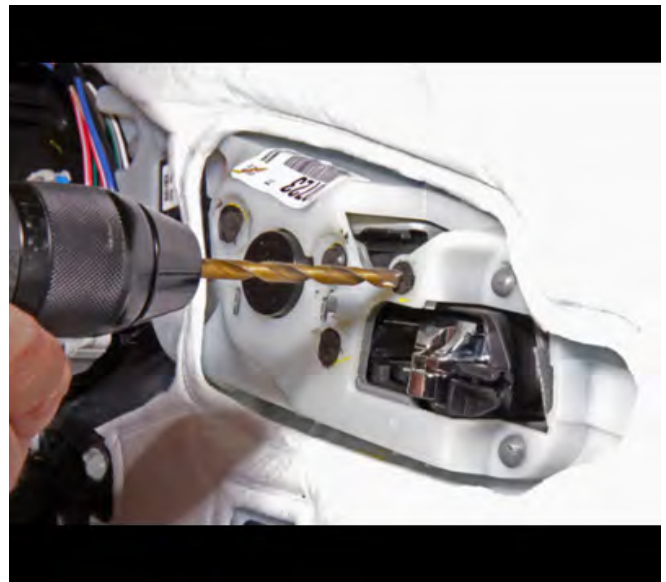
**Service Procedure**

If you encounter a vehicle with the above concern, obtain the new service parts listed in the parts table below and complete the following steps:



5701166

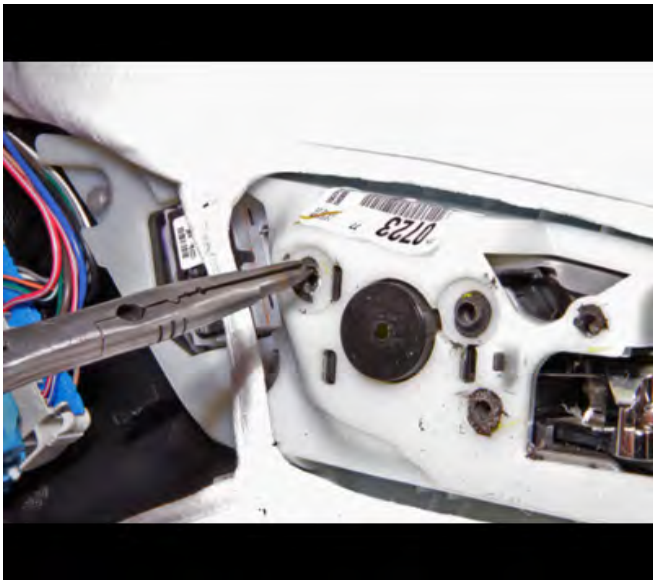
1. Remove the front side door trim. Refer to *Front Side Door Trim Replacement* in SI.
2. Disconnect the electrical connectors from the front side door inside handle.



5701167

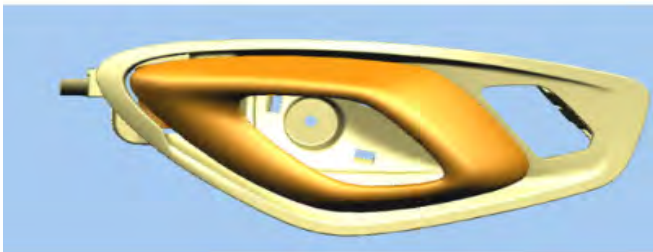
3. Drill the 4 heat stakes with an appropriate size drill bit.

**Note:** Do not drill too deeply or the hole in the substrate will become too large. Drill only enough to release the handle assembly.



5701171

- Using a suitable hand tool, remove the remaining heat stake material.



5701174

- Remove the front side door inside handle.
- Align the front side door inside handle to the front side door trim.
- With the aid of a second person, support the front side door inside handle in position.



5701177

- Stamp nut. Install and hand tighten.

**Note:** Do not over tighten the nuts.

- Verify the fit of the front side door inside handle to the trim.
- Carefully install the electrical connectors to the front side door inside handle.
- Re-install the front side door trim. Refer to *Front Side Door Trim Replacement* in SI.

**Parts Information**

| Causal Part | Description                                | Part Number | Qty |
|-------------|--|-------------|-----|
| X           | Handle ASM-FRT S/D I/S (Driver Side)       | 84005969    | 1   |
| X           | Handle ASM-FRT S/D I/S (Passenger Side)    | 84005971    | 1   |
|             | Nut Hex Self Thread Internal DR (Pawl Nut) | 11503417    | 4   |

**Warranty Information**

For vehicles repaired under warranty, use:

| Labor Operation | Description                               | Labor Time                         |
|-----------------|---|------------------------------------|
| 2060620         | Front Side Door Inside Handle Replacement | Use Published Labor Operation Time |

|          |                           |
|----------|---------------------------|
| Version  | 1                         |
| Modified | Released January 20, 2021 |

GM bulletins are intended for use by professional technicians, NOT a "do-it-yourselfer". They are written to inform these technicians of conditions that may occur on some vehicles, or to provide information that could assist in the proper service of a vehicle. Properly trained technicians have the equipment, tools, safety instructions, and know-how to do a job properly and safely. If a condition is described, DO NOT assume that the bulletin applies to your vehicle, or that your vehicle will have that condition. See your GM dealer for information on whether your vehicle may benefit from the information.



WE SUPPORT VOLUNTARY  
TECHNICIAN  
CERTIFICATION