



# Service Bulletin

Bulletin No.: 20-NA-208

Date: October, 2020

## TECHNICAL

**Subject:** Assist Step Running Boards Inoperable and Not Functioning with Door Operation

Brand:	Model:	Model Year:		VIN:		Engine:	Transmission:
		from	to	from	to		
Chevrolet	Suburban	2021	2021				
	Tahoe						
GMC	Yukon						
	Yukon XL						

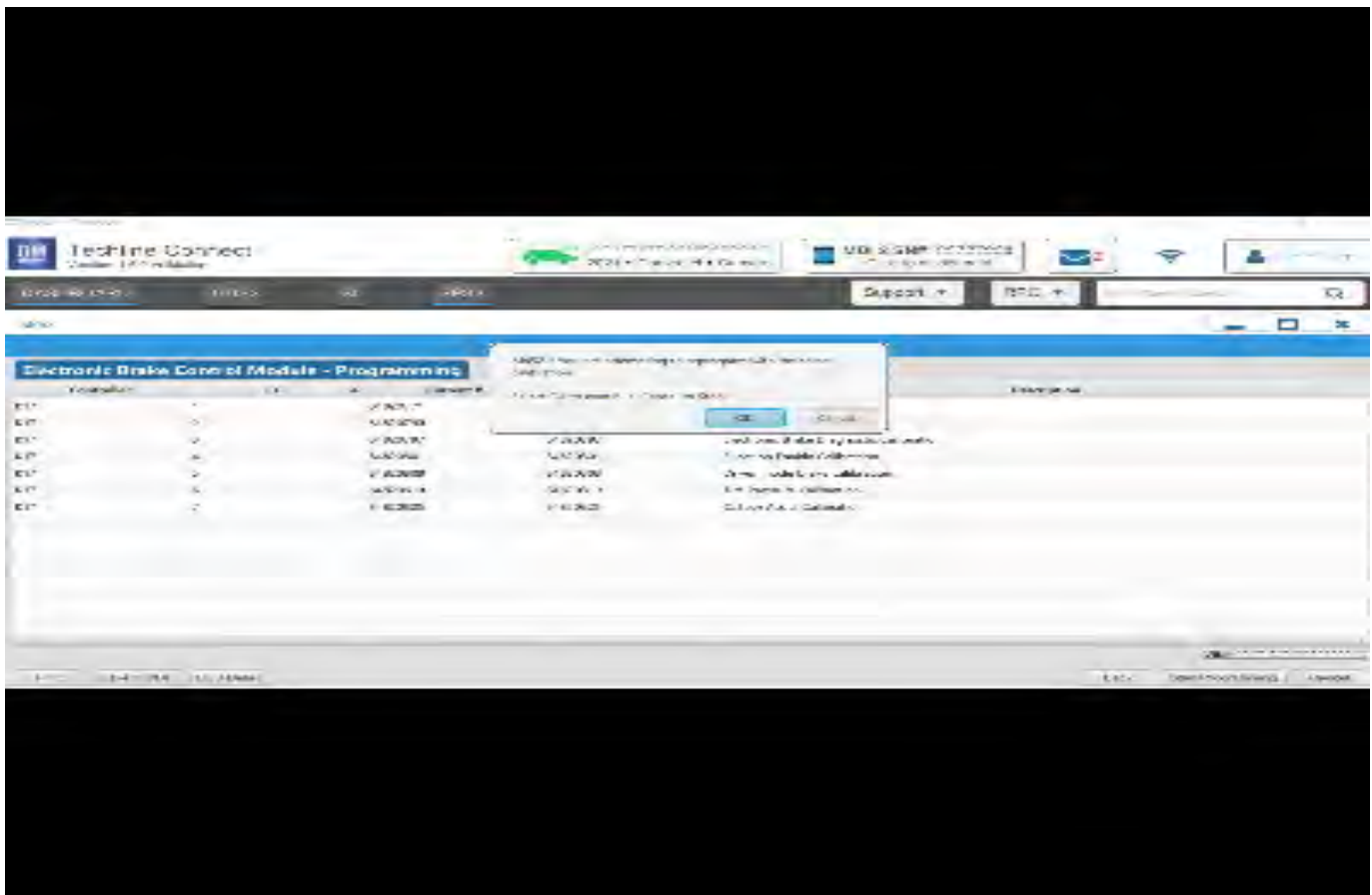
<b>Involved Region or Country</b>	United States and Canada
<b>Additional Options (RPOs)</b>	
<b>Condition</b>	Some customers may comment on the running boards being inoperable and not functioning with the door operation.
<b>Cause</b>	The cause of the condition may be a software anomaly with the Assist Step Control Module.
<b>Correction</b>	Reprogram the Assist Step Control Module and relearn the driver and passenger side assist steps.

### Service Procedure

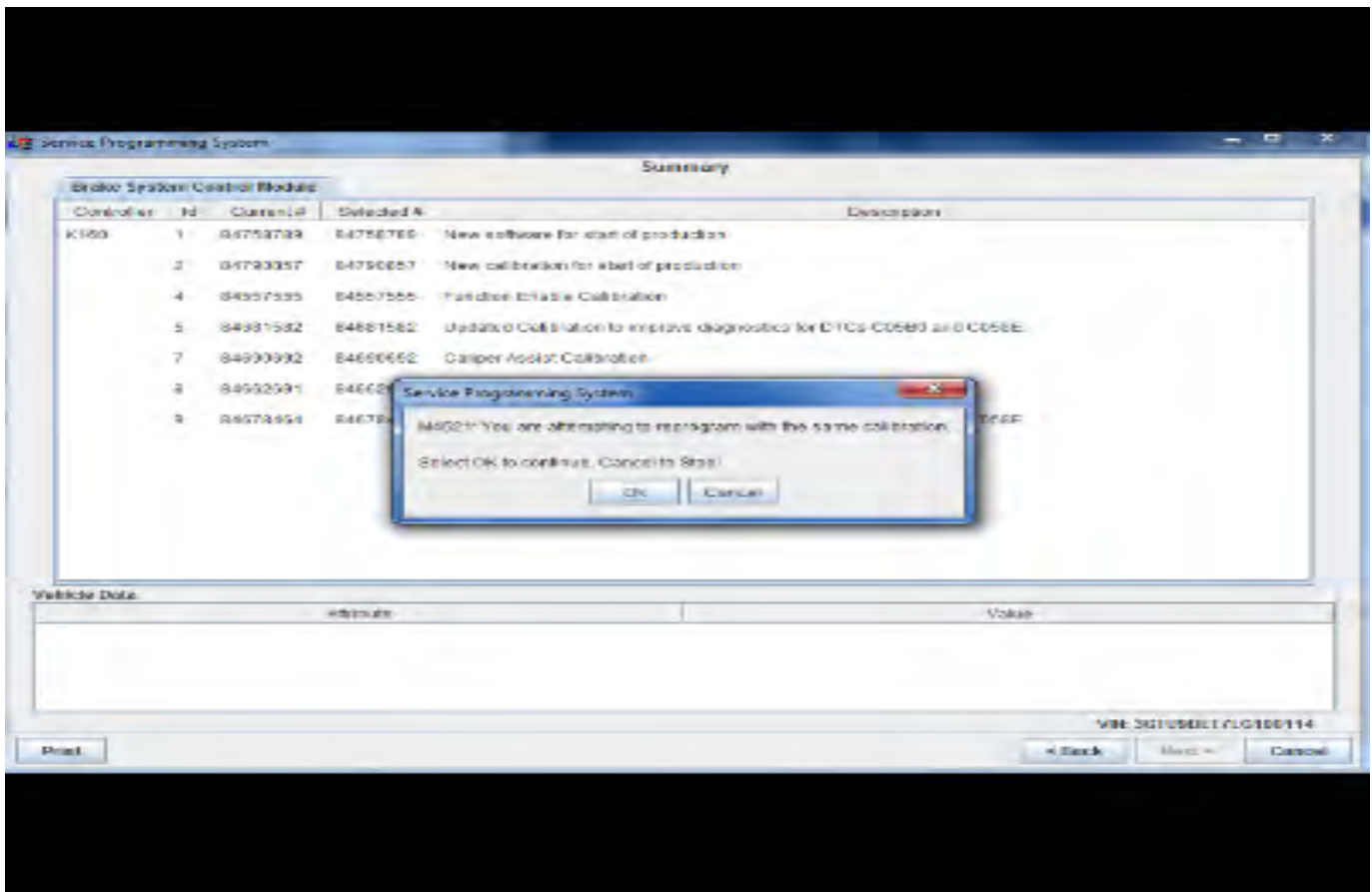
**Caution:** Before downloading the update files, be sure the computer is connected to the internet through a network cable (hardwired). DO NOT DOWNLOAD or install the files wirelessly. If there is an interruption during programming, programming failure or control module damage may occur.

**Note:** Carefully read and follow the instructions below.

- Ensure the programming tool is equipped with the latest software and is securely connected to the data link connector. If there is an interruption during programming, programming failure or control module damage may occur.
- Stable battery voltage is critical during programming. Any fluctuation, spiking, over voltage or loss of voltage will interrupt programming. Install a GM Authorized Programming Support Tool to maintain system voltage. Refer to [www.gmdesolutions.com](http://www.gmdesolutions.com) for further information. If not available, connect a fully charged 12 V jumper or booster pack disconnected from the AC voltage supply. DO NOT connect a battery charger.
- Ensure the ignition is turned OFF, load on the vehicle's battery such as; interior lights, exterior lights (including daytime running lights), HVAC, etc. may affect the download process.
- Clear DTCs after programming is complete. Clearing powertrain DTCs will set the Inspection/Maintenance (I/M) system status indicators to NO.



564477



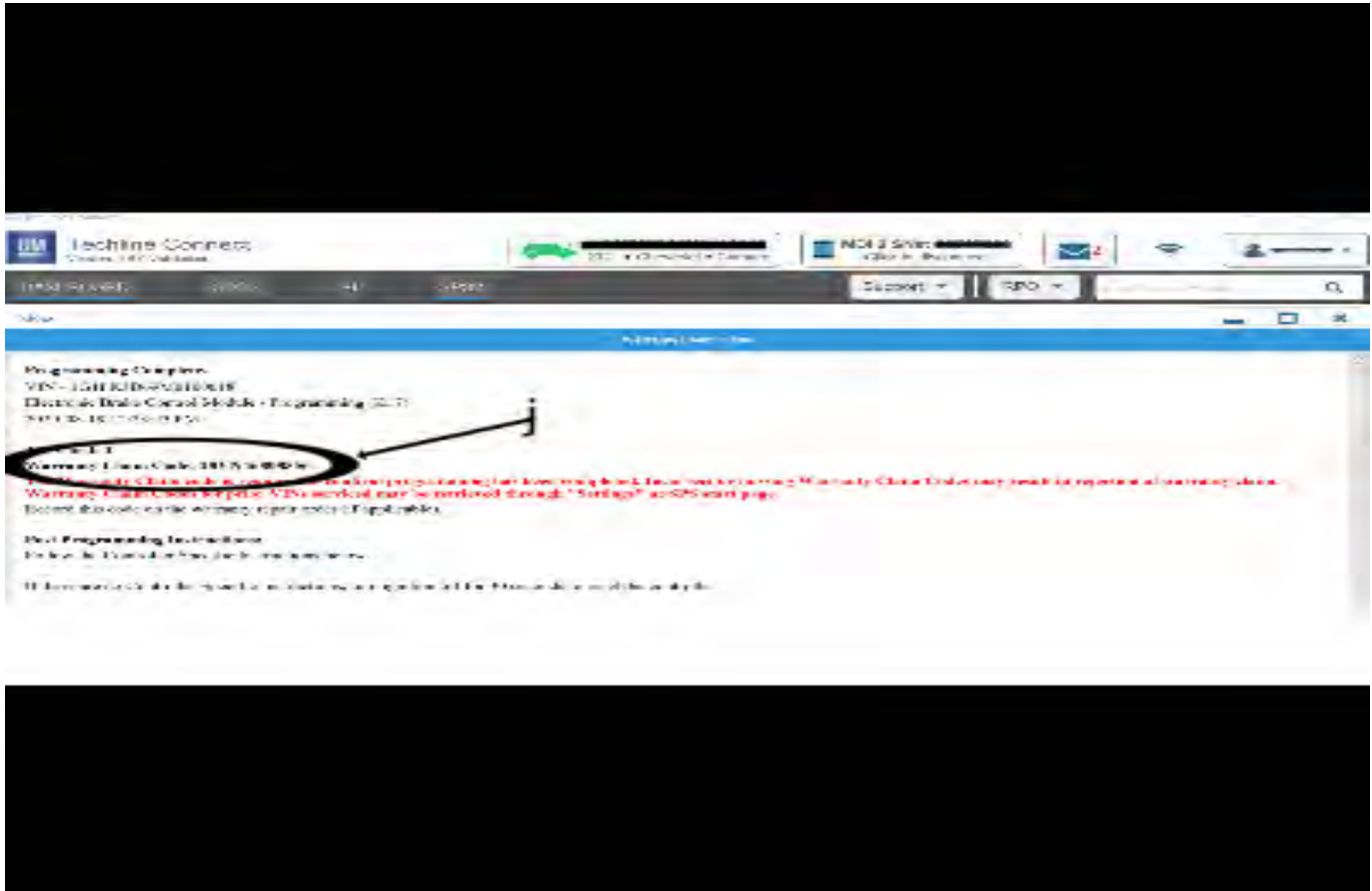
5431207

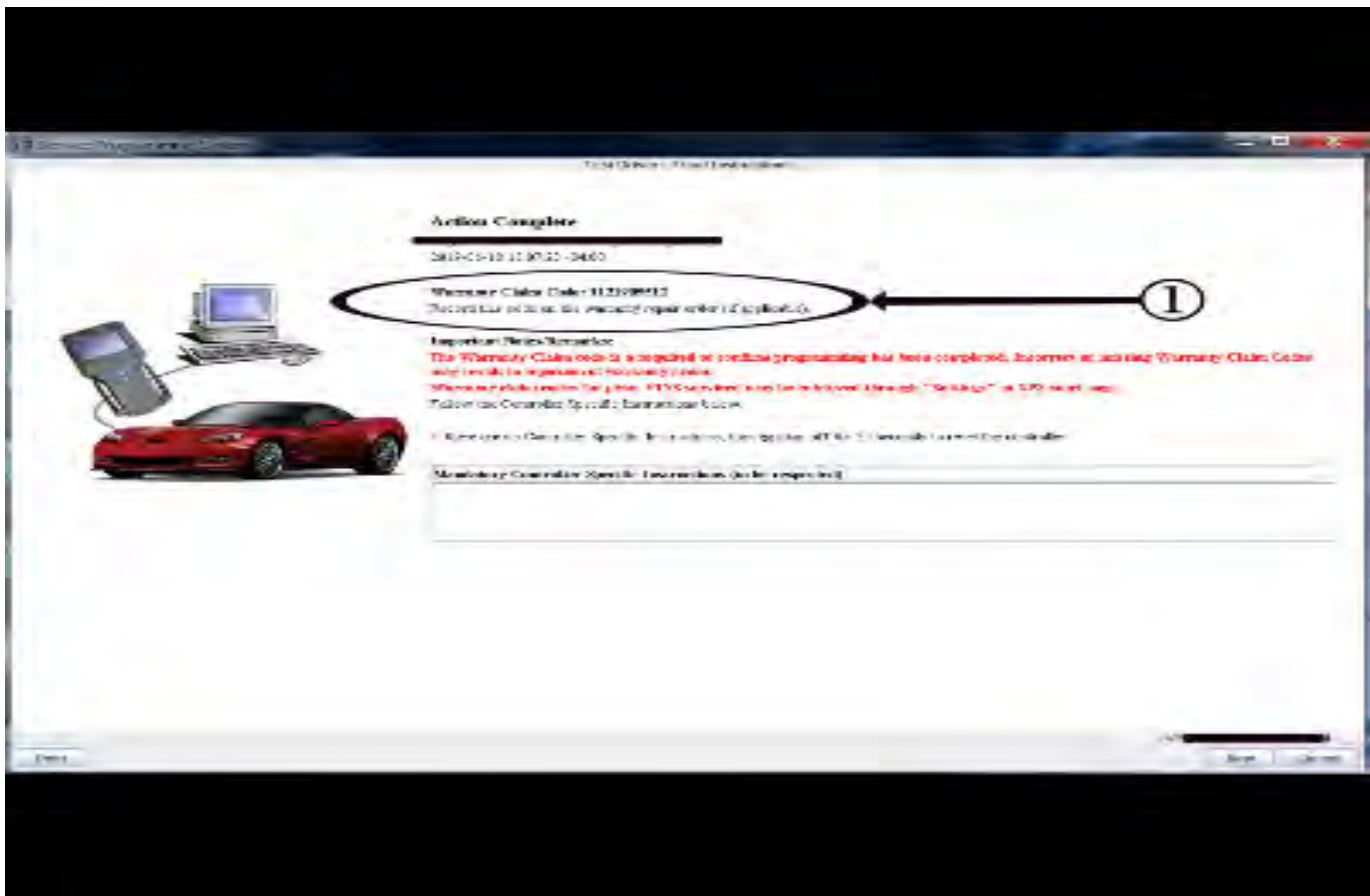
**Important:** Techline Connect and TIS2WEB screens shown above.

**Important:** : If the Same Calibration/Software Warning is noted on the TLC or SPS Summary screen, select OK and follow on-screen instructions. The system will generate a warranty claim code (WCC) for documentation purposes only. Perform service information (SI) diagnostics to determine the cause of the condition. Use the applicable labor operation code when submitting a warranty claim. Do NOT use the WCC with the warranty claim submission.

**Important:** When programming a module in GM's new Vehicle Intelligence Platform, or VIP, the power mode (ignition) needs to be off or errors may occur. This involves the 2020 Chevrolet Corvette, Cadillac CT5 and CT4, as well as the upcoming full-size Chevrolet, GMC, Cadillac SUVs and Buick Envision. Serial Data Message Authentication also needs to have the ignition off.

1. Reprogram the Assist Step Control Module. Refer to *K4 Assist Step Control Module: Programming and Setup* in SI.





5431209

**Important:** To avoid warranty transaction rejections, you **MUST** record the warranty claim code provided on the SPS Warranty Claim Code (WCC) screen shown above on the job card. Refer to callout 1 above for the location of the WCC on the SPS screen

**Warranty Information**

For vehicles repaired under the Bumper-to-Bumper coverage (Canada Base Warranty coverage), use the following labor operation. Reference the Applicable Warranties section of Investigate Vehicle History (IVH) for coverage information.

- Record SPS Warranty Claim Code on job card for warranty transaction submission.

Labor Operation	Description	Labor Time
*2887008	Reprogram the Assist Step Control Module and Assist Step Learn	0.3 hr

\*This is a unique Labor Operation for Bulletin use only.

**Important:** \*\*To avoid warranty transaction rejections, carefully read and follow the instructions below:

- The SPS Warranty Claim Code must be accurately entered in the "SPS Warranty Claim Code" field of the transaction.
- When more than one Warranty Claim Code is generated for a programming event, it is required to document all Warranty Claim Codes in the "Correction" field on the job card. Dealers must also enter one of the codes in the "SPS Warranty Claim Code" field of the transaction, otherwise the transaction will reject. It is best practice to enter the FINAL code provided by SPS/SPS2.

**Warranty Claim Code Information Retrieval**

If the SPS Warranty Claim Code was not recorded on the Job Card, the code can be retrieved in the SPS system as follows:

1. Open TLC/TIS on the computer used to program the vehicle.
2. Select and start SPS/SPS2.
3. Select Settings.
4. Select the Warranty Claim Code tab.

The VIN, Warranty Claim Code and Date/Time will be listed on a roster of recent programming events. If the code is retrievable, dealers should resubmit the transaction making sure to include the code in the SPS Warranty Claim Code field.

<b>Version</b>	1
<b>Modified</b>	Released October 16, 2020

