

ATTENTION:

- GENERAL MANAGER
- PARTS MANAGER
- CLAIMS PERSONNEL
- SERVICE MANAGER

IMPORTANT - All Service Personnel Should Read and Initial in the boxes provided, right.

© 2020 Subaru of America, Inc. All rights reserved.



QUALITY DRIVEN® SERVICE

SERVICE BULLETIN

APPLICABILITY: 2015-20MY WRX **NUMBER:** 03-86-20
SUBJECT: Clutch Master Cylinder- Additional Replacement **DATE:** 11/04/20
 Procedure Requirements

INTRODUCTION:

This bulletin provides additional repair procedures to follow when replacing a leaking clutch master cylinder on certain vehicles. Under certain circumstances, a higher than normal amount of force / effort may be required to operate the clutch hydraulic system. Some causes for this are:

- binding and / or worn components in the clutch pedal assembly
- a worn clutch disk and / or pressure plate
- binding in any of the clutch assembly release lever pivot points.

When additional force is required to operate the system, premature wear and operating fluid leakage from the clutch master cylinder may result. A Flow Chart for these repairs is provided in the Service Procedure / Information section below.

VERY IMPORTANT NOTES:

- **The clutch disk is considered to be a Wear Item.** When clutch disk replacement is necessary because of wear, coverage is limited to the duration and terms of the Wear Item Limited Warranty.
- **Clutch components damaged as a result of abuse, improper maintenance or modifications to the vehicle are not a matter for warranty coverage.** Modifications to the vehicle should also be considered in the decision of possible coverage when replacing these components. The DPSM should be consulted for possible consideration of Goodwill coverage. In the case of Goodwill coverage, always include the Goodwill language on the repair invoice as noted in P&P Section **8.4.45.2: Modification /Abuse.**
- Other clutch system components such as the pressure plate, flywheel and pilot bearing are covered by the Basic New Car Limited Warranty and the Powertrain Limited Warranty **when a repair is necessary due to a defect in material or workmanship.**

<p>CAUTION: VEHICLE SERVICING PERFORMED BY UNTRAINED PERSONS COULD RESULT IN SERIOUS INJURY TO THOSE PERSONS OR TO OTHERS.</p> <p>Subaru Service Bulletins are intended for use by professional technicians ONLY. They are written to inform those technicians of conditions that may occur in some vehicles, or to provide information that could assist in the proper servicing of the vehicle. Properly trained technicians have the equipment, tools, safety instructions, and know-how to do the job correctly and safely. If a condition is described, DO NOT assume that this Service Bulletin applies to your vehicle, or that your vehicle will have that condition.</p>	<p style="text-align: center;">Subaru of America, Inc. is ISO 14001 Compliant</p> <p>ISO 14001 is the international standard for excellence in Environmental Management Systems. Please recycle or dispose of automotive products in a manner that is friendly to our environment and in accordance with all local, state and federal laws and regulations.</p>
--	--

Continued...

PART INFORMATION:

Item Number:	Part Number	Description
1	12342AA170	FLYWHEEL ASSEMBLY-FLEXIBLE
2	30210AA800	COVER COMPLETE-CLUTCH
3	30100AB030	DISC COMPLETE-CLUTCH
4	30502AA160	BEARING-CLUTCH RELEASE
5	30531AA180	LEVER-CLUTCH RELEASE
6	30537AA061	PIVOT-RELEASE LEVER
7	30620AA192	CYLINDER-CLUTCH OPERATING
8	37240VA000	PIPE-CLUTCH MASTER CYLINDER
9	37230VA000	MASTER CYLINDER-CLUTCH
10	37251AG020	HOSE-CLUTCH
11	36004VA030	PEDAL ASSY-BRAKE & CLUTCH

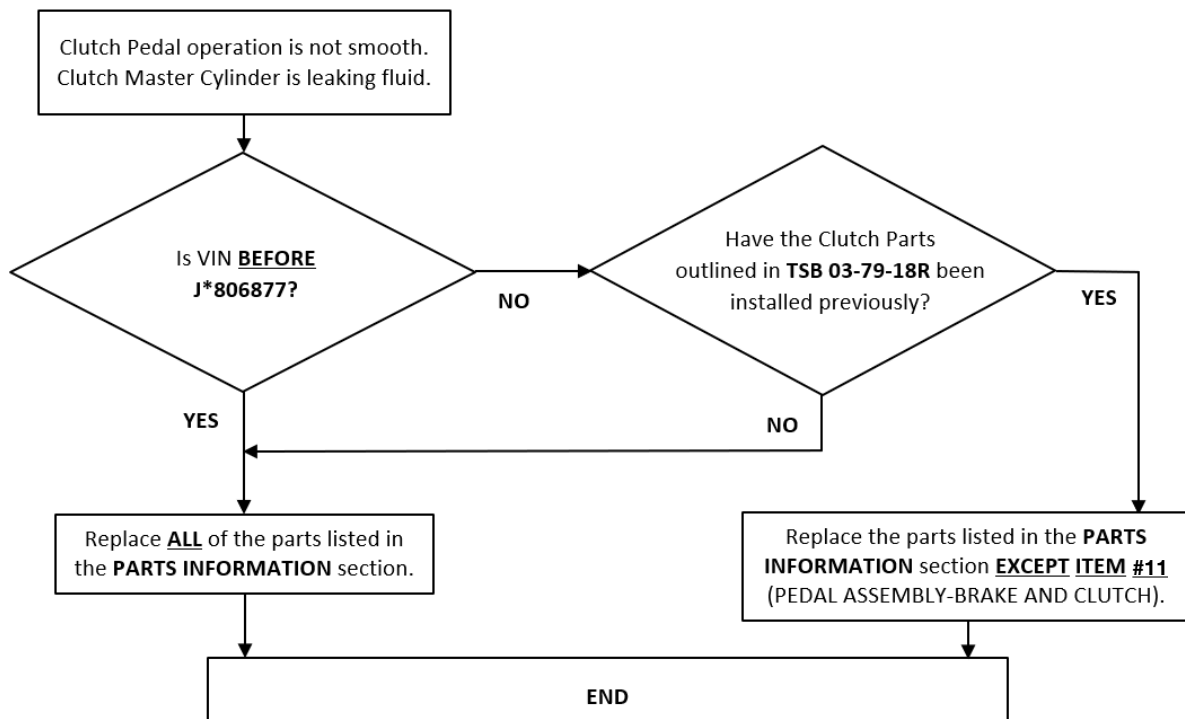
REMINDER: Always order the most up-to-date replacement parts based on the specific VIN being repaired.

SERVICE PROCEDURE / INFORMATION:

REMINDER: Customer satisfaction and retention starts with performing quality repairs.

The service procedures for replacement of the parts listed above remain unchanged. Always refer to the applicable Service Manual and review the full requirements of the repair being performed. Service Manual procedures contain information critical to performing an effective repair the first time, every time. This includes important SAFETY precautions, inspection criteria, necessary special tools, required processes and related one-time-use parts needed for a complete and lasting repair.

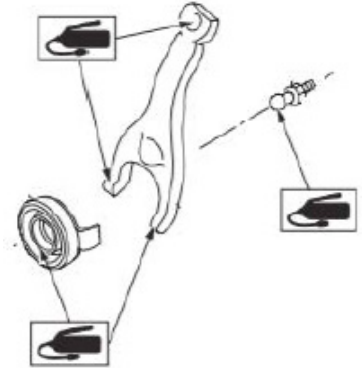
Flow Chart:



Continued...

ADDITIONAL REPAIR INFORMATION / HELPFUL HINTS:

- For multiple occurrences or low mileage clutch disc / cover / flywheel replacements due to excessive wear or failure, **always confirm the customer’s driving habits or usage conditions before proceeding with any clutch system repairs.**
- Using the replacement parts listed above **WILL NOT** protect the clutch system from severe abuse.
- **REMINDER:** NEVER attempt to resurface the flywheel assembly.
- Always advise the customer to operate their clutch system as outlined in the Owner’s Manual: “Starting and Operating / Manual Transmission” section.
- Always use the proper grease (Nichimoly N-130, Conoco-Philips Multiplex Red #2 or Subaru p.n. 000041000 when lubricating the contact points of the release bearing and related components as specified in the Service Manual and shown here.



WARRANTY / CLAIM INFORMATION:

For vehicles within the Basic New Car Limited or Powertrain Limited Warranty period or covered by an active Subaru Added Security Powertrain, Classic or Gold plan, this repair may be submitted using the following claim information:

Labor Description	Labor Operation #	Labor Time	Fail Code
WRX CLUTCH SYSTEM REPAIR WITH PEDAL ASSY R&R	B322-301	5.9	JBA-47
BLEED CLUTCH HYDRAULIC SYSTEM	C316-221	.3	
WRX CLUTCH SYSTEM REPAIR WITHOUT PEDAL ASSY R&R	B322-303	4.9	JBB-47
BLEED CLUTCH HYDRAULIC SYSTEM	C316-221	.3	

IMPORTANT REMINDERS:

- SOA strongly discourages the printing and/or local storage of service information as previously released information and electronic publications may be updated at any time.
- Always check for any open recalls or campaigns anytime a vehicle is in for servicing.
- Always refer to STIS for the latest service information before performing any repairs.