

**ATTENTION:**  
GENERAL MANAGER ☐  
PARTS MANAGER ☐  
CLAIMS PERSONNEL ☐  
SERVICE MANAGER ☐

IMPORTANT - All  
Service Personnel  
Should Read and  
Initial in the boxes  
provided, right.


© 2016 Subaru of America, Inc. All rights reserved.



QUALITY DRIVEN® SERVICE

## SERVICE BULLETIN

**APPLICABILITY:** 2015-16MY Legacy and Outback  
2012-16MY Impreza  
2013-19MY Crosstrek  
2013-19MY Forester  
2015-16MY WRX and STI

**NUMBER:** 12-203-16R

**DATE:** 07/14/16

**REVISED:** 05/08/20

**SUBJECT:** Squeaking Sound from Front Seat Buckle

### INTRODUCTION:

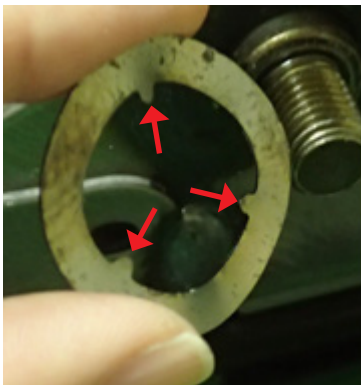
This bulletin provides a procedure to address customer concerns of a squeaking sound originating from where the front seat belt buckle assembly attaches to the seat frame. A design change was made to the wave washer used at the attachment point to eliminate the sound. The sound can be heard when moving the buckle assembly side to side.

### PRODUCTION CHANGE INFORMATION:

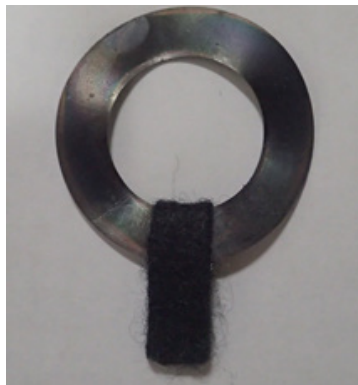
The new wave washer was incorporated into production during **mid-March, 2016**.

### PART INFORMATION:

The part number for the new wave washer is **64168FL000**.



**OLD** Wave Washer



**NEW Spring** Wave Washer

The 3 “tang” seen on the inside of the **OLD** wave washer have been deleted. The inside diameter of the **NEW Spring** wave washer has been decreased and a small felt added to allow the washer to turn smoother with the buckle and have a better fit on the shoulder portion of the retaining bolt.

**CAUTION: VEHICLE SERVICING PERFORMED BY UNTRAINED PERSONS COULD  
RESULT IN SERIOUS INJURY TO THOSE PERSONS OR TO OTHERS.**

Subaru Service Bulletins are intended for use by professional technicians ONLY. They are written to inform those technicians of conditions that may occur in some vehicles, or to provide information that could assist in the proper servicing of the vehicle. Properly trained technicians have the equipment, tools, safety instructions, and know-how to do the job correctly and safely. If a condition is described, DO NOT assume that this Service Bulletin applies to your vehicle, or that your vehicle will have that condition.

**SUBARU OF AMERICA, INC. IS  
ISO 14001 COMPLIANT**

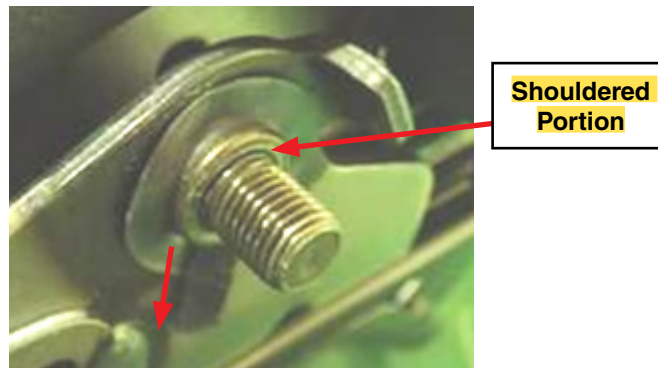
ISO 14001 is the international standard for excellence in Environmental Management Systems. Please recycle or dispose of automotive products in a manner that is friendly to our environment and in accordance with all local, state and federal laws and regulations.

*Continued...*

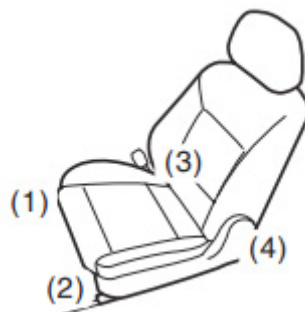
## SERVICE PROCEDURE / INFORMATION:

**VERY IMPORTANT:** Before proceeding with this repair, always follow all of the applicable precautions whenever working with the Airbag and / or Occupant Detection Systems.

- After confirming the customer concern and isolating the squeaking sound to the seat belt buckle bolt / washer, remove the affected front seat assembly to gain access following the procedure in the applicable Service Manual.
- Remove the retaining nut, seat belt buckle assembly and old wave washer from the seat frame.
- Inspect the area where the old wave washer was for any roughness and if found, carefully smooth the area with either a small flat file and / or sandpaper as necessary.
- Use a finger to collect a small amount of excess grease found at the rear of the seat slide rail.
- Apply the grease to both sides of the new **spring** wave washer and the **shouldered** portion of the seat belt buckle mounting bolt (stud). DO NOT apply grease to the bolt threads.
- Install the new **spring** wave washer onto the groove in the **shouldered portion** of the mounting bolt as shown below. The felt **portion** should be at about the 6:00 position (pointing down).



- **IMPORTANT: CAREFULLY** reinstall the seat belt buckle assembly onto the shouldered portion against the wave washer and hold it **firmly** in place while tightening the retaining nut.
- Torque the retaining nut to 38 Nm (28 ft. lbs.) and confirm the seat belt buckle assembly moves freely. **If the buckle assembly feels like it is binding, make sure the spring wave washer and / or buckle assembly did not come off the shouldered portion of the mounting bolt while the retaining nut was being tightened. If the spring wave washer came off, it most likely was pinched and damaged, requiring replacement. DO NOT try to straighten / reuse it.**
- **Reinstall the seat assembly in reverse order of removal.**
- **IMPORTANT:** Torque the four (4) seat assembly retaining bolts to 53 Nm (39 ft. lbs.) using the sequence shown in the illustration below.



- Road test the vehicle to confirm the repair along with proper operation of the Airbag and Occupant Detection System warning lamps.

*Continued...*

## WARRANTY / CLAIM INFORMATION:

For vehicles within the Basic New Car Limited Warranty period or covered by an active Subaru Added Security Gold plan, this repair may be submitted using the following claim information:

Labor Description	Labor Operation #	Labor Time	Fail Code
ONE INNER FRONT SEAT BELT BUCKLE SQUEAK REPAIR	A913-983	0.3	YNZ-25
BOTH INNER FRONT SEAT BELT BUCKLES SQUEAK REPAIR	A913-984	0.5	

## IMPORTANT REMINDERS:

- SOA strongly discourages the printing and/or local storage of service information as previously released information and electronic publications may be updated at any time.
- Always check for any open recalls or campaigns anytime a vehicle is in for servicing.
- Always refer to STIS for the latest service information before performing any repairs.