



Preliminary Information

PIC6064B Cadillac ELR (EREV) Outside Rearview Mirror Charge Indicator LED Intermittent Operation During Charging

Models

Brand:	Model:	Model Years:	VIN:		Engine:	Transmissions:
			from	to		
Cadillac	ELR	2014 - 2016	All	All	All	All

Supersession Statement

This PI was superseded to add model year 2016. Please discard PIC6064A.

The following diagnosis might be helpful if the vehicle exhibits the symptom(s) described in this PI.

Condition / Concern

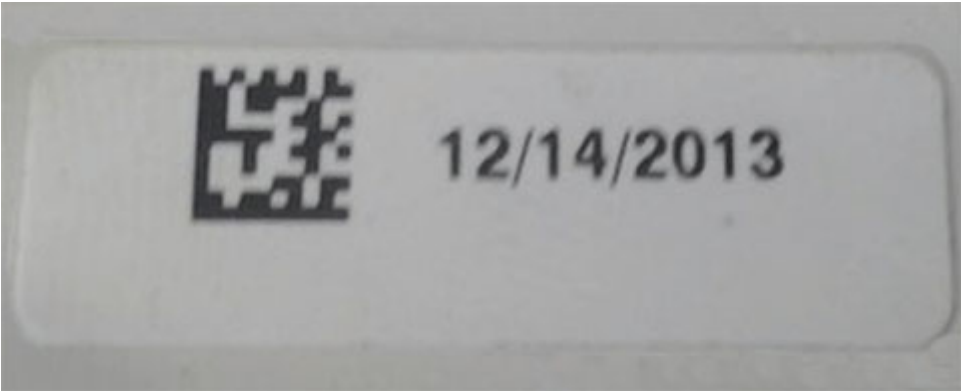
A customer may comment that the Outside Rearview Mirror Charge Status Indicator LED lamps may be intermittently inoperative on either side of the vehicle.

Recommendations / Instructions

This concern may be difficult to duplicate and there may not be any DTCs stored.

- **Check for a poor connection between the terminals at the Outside Rearview Mirror Charge Indicator LED Lens assembly and the harness connector. The terminals on the circuit board located inside the Lens may not extend outward far enough to engage and make proper contact with the female terminals in the harness connector when the connector is locked into position.**
- **The mirror assembly may have been replaced on a prior date. Do not use the vehicle build date to determine the sticker date on the lens assembly. The date code located on the sticker that is mounted on the back side of the Outside Rearview Mirror Charge Status Indicator LED Lens assembly must be checked.**





- If the date on the sticker adhered to the backside of the Outside Rearview Mirror Charge Status Indicator LED Lens assembly is earlier than June of 2014, the Outside Rearview Mirror Charge Indicator LED Lens assembly will need to be replaced.

Warranty Information

For vehicles repaired under the EV coverage, use the following labor operation. Reference the Applicable Warranties section of Investigate Vehicle History (IVH) for coverage information.

Labor Operation	Description	Labor Time
2041160	Outside Rearview Mirror Turn Signal Lamp Replacement	0.3
Diagnosis Time	To perform electrical diagnosis.	0.3

Please follow this diagnostic or repair process thoroughly and complete each step. If the condition exhibited is resolved without completing every step, the remaining steps do not need to be performed.



GENERAL MOTORS