



Service Bulletin

Bulletin No.: 19-NA-134

Date: June, 2019

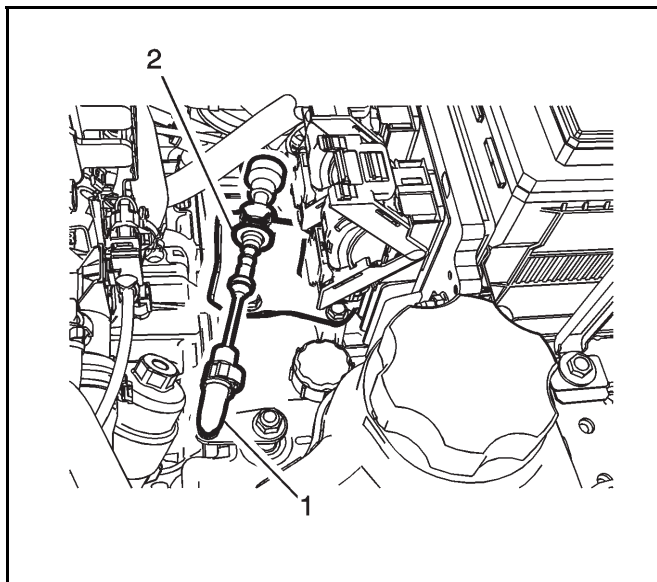
INFORMATION

Subject: Information on Shifter Sticking and/or Difficulty Selecting Desired Gear

Brand:	Model:	Model Year:		VIN:		Engine:	Transmission:
		from	to	from	to		
Chevrolet	Malibu	2004	2012				Automatic
Pontiac	G6	2005	2010				
Saturn	AURA	2007	2010				

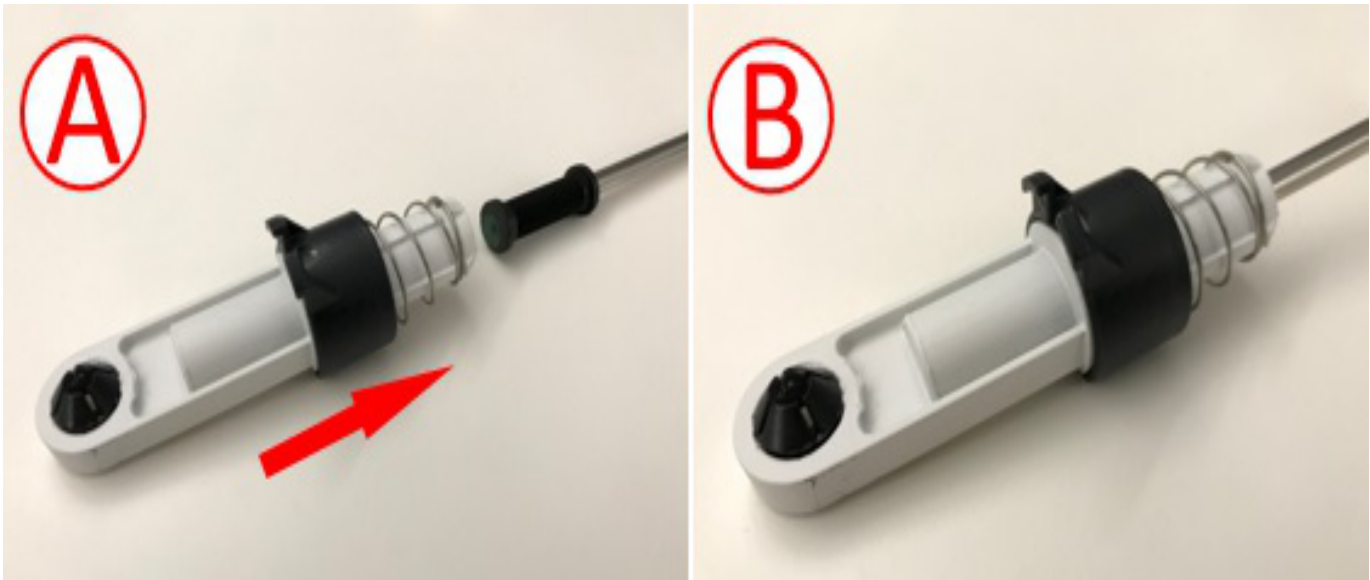
Involved Region or Country	North America
Condition	Some customers may comment on the shifter sticking and/or that selecting the desired gear is difficult. Some technicians may find this after Field Action 14152 was performed.
Cause	This condition may be caused by coolant spilling onto the transmission shifter cable at the transmission, causing the material to degrade prematurely.
Information	Over time, if the grommet in the shifter cable from field action 14152 comes in contact with coolant, it may break down causing the shift cable adjuster not to perform properly. If the grommet has been found to be the cause of the concern, perform the Service Procedure below.

Service Procedure



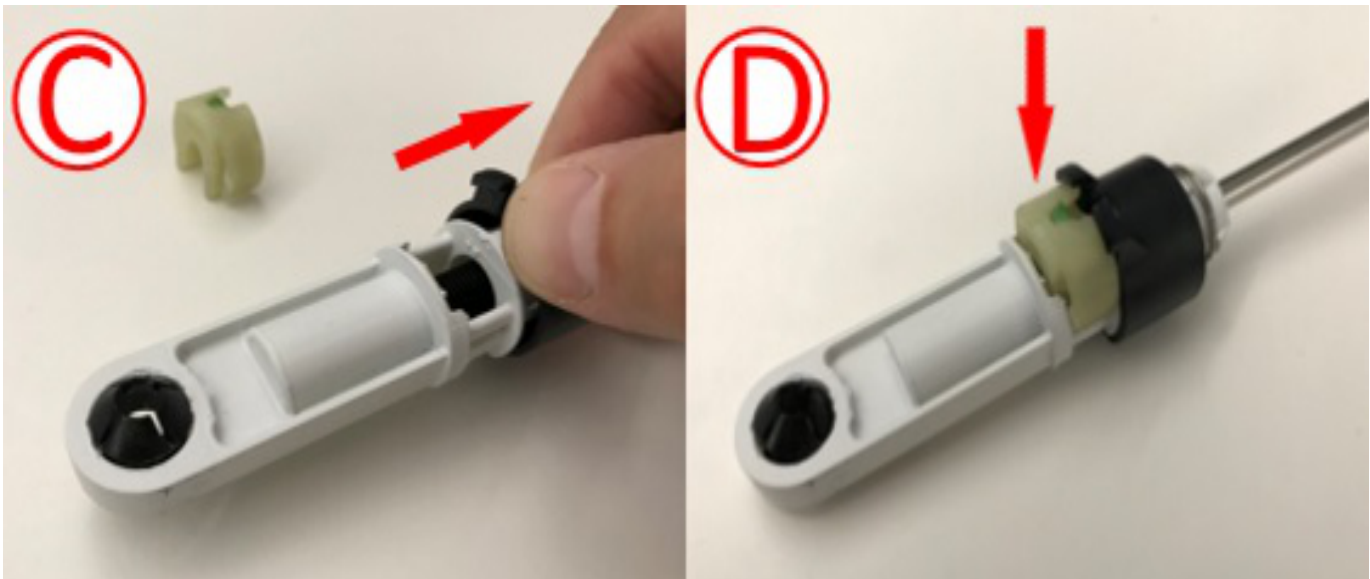
1. Remove the old shift cable adjuster (1) from the transmission lever ball stud. Refer to *Range Selector Lever Cable Replacement* in SI.
2. Utilizing a flat blade screwdriver, remove the old shift cable adjuster from the shift cable and discard.

2492632



5358153

3. Slide the new cable adjuster (A) onto the plastic toothed barrel feature on the shift cable until seated (B).



5358198

Note: Ensure to snap the adjuster lock into its first holding position, which allows for free movement of the adjuster.

4. Slide the adjuster spring-loaded cover out of its home position (C) and insert the adjuster lock into the adjuster as shown (D).
5. Snap the new adjuster onto the transmission lever ball stud.
6. Push down on the adjuster lock and confirm that the spring-loaded cover fully returns to its home position and completely covers the adjuster lock.
7. Perform a shift system evaluation and confirm that all gears can be accurately obtained.
 - ⇒ If required, perform a shift cable re-adjustment. Refer to *Range Selector Lever Cable Adjustment* in SI.

Parts Information

Causal Part	Description	Part Number	Qty
N/A	Adjuster-A/Trns RANGE SEL LVR CBL	84523145	1
N/A	LOCK-A/Trns RANGE SEL LVR CBL ADJ	23261490	1

Version	1
Modified	Released June 14, 2019

