



# Service Bulletin

Bulletin No.: 17-NA-355

Date: June, 2019

## TECHNICAL

**Subject:** Front and/or Rear Fascia Peeling

Brand:	Model:	Model Year:		VIN:		Engine:	Transmission:
		from	to	from	to		
Chevrolet	Corvette	2017	2019			All	All

<b>Involved Region or Country</b>	North America, Japan, Europe, Middle East, Russia, Thailand
-----------------------------------	---

Condition



4891589



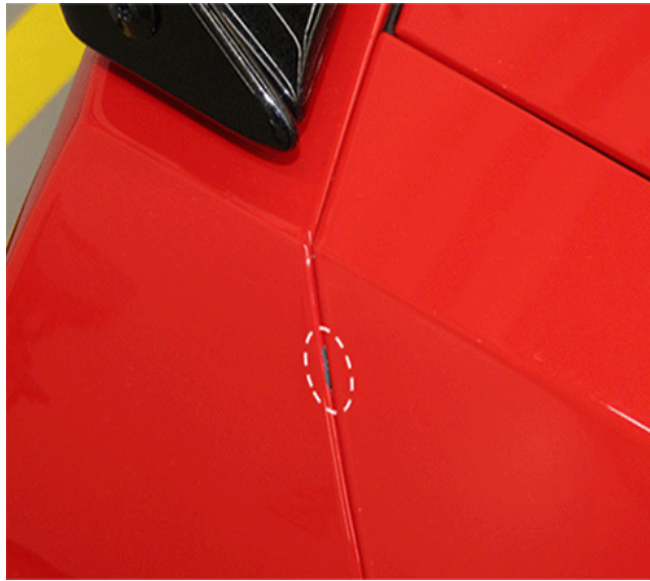
4891590

Some customers may comment that a front and/or rear upper fascia may be peeling at the interfacing edge to the fender or quarter panel. Some examples are shown circled in the graphics above.


Cause



4891592



4891593

	 <p data-bbox="1419 739 1482 758">4891595</p> <p data-bbox="537 768 1390 821">The cause of the condition may be lack of paint adhesion due to improper surface preparation.</p>
<p data-bbox="131 932 253 957"><b>Correction</b></p>	<p data-bbox="537 831 1438 905"><b>Important:</b> Refer to the latest revision of the GM Approved Refinish Materials book to identify the paint systems you may use that have been engineered to meet GM standards.</p> <p data-bbox="532 915 1422 1026">The latest revision of the GM Approved Refinish Materials is found in GM Service Information (SI) under Unit Repair Manual/Specialty Publications. A PDF copy of the GM Approved Refinish Materials booklet is located on the Genuine GM Parts website at <a href="http://www.genuinegmparts.com">www.genuinegmparts.com</a>.</p> <p data-bbox="537 1033 1414 1060">Refinish the front and/or rear upper fascia(s) following the Service Procedure below.</p>

**Service Procedure**



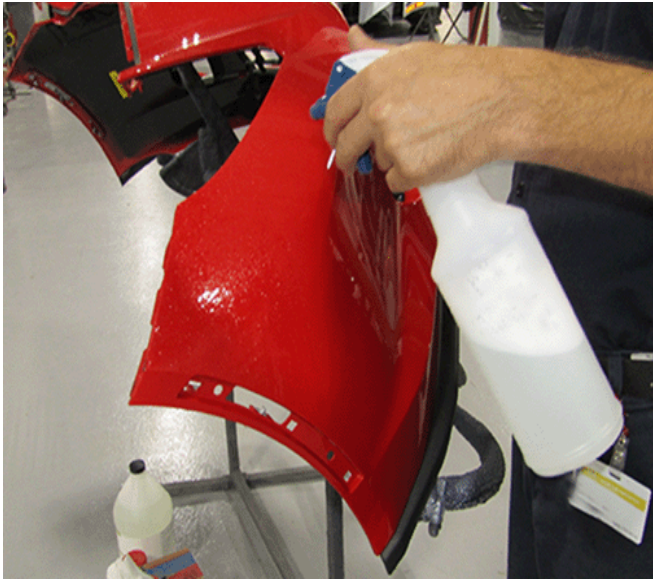
4891596

**Important:** Repair of the rear fascia pertains ONLY to 2017 and 2018 Model Year vehicles. Containment of the rear fascia paint condition was successful SOP 2019.

1. Remove the affected front and/or rear fascia(s) from the vehicle. Refer to *Front Bumper Fascia Replacement* and/or *Rear Bumper Upper Fascia Replacement* in SI.

**Important:** For all cleaning and prep procedures, use the product following your paint manufacturer's recommendation.





4891597

2. Completely clean the fascia with soap and water.



4891599

3. Follow up with additional cleaning using a solvent cleaner. In our case, the paint manufacturer's recommendation was a PPG Universal Cleaner for plastic.



4891601

4. Inspect all edges of the fascia for any evidence of paint peeling, or lack of adhesion.



4891602

**Important:** In the affected area(s), sand the paint edge down to the plastic surface, across the whole edge. Hand sanding is recommended in this step to avoid glazing of the plastic surface.

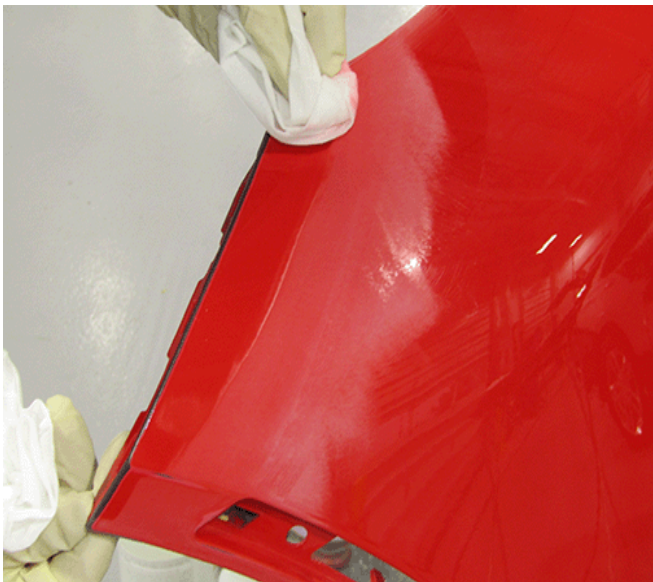
5. Feather edge the affected area(s) on the fascia, **hand sanding** with 240/320 grit sand paper.





4891605

6. Repeat feather edging the repair area(s), **machine sanding** with 320 grit sand paper.



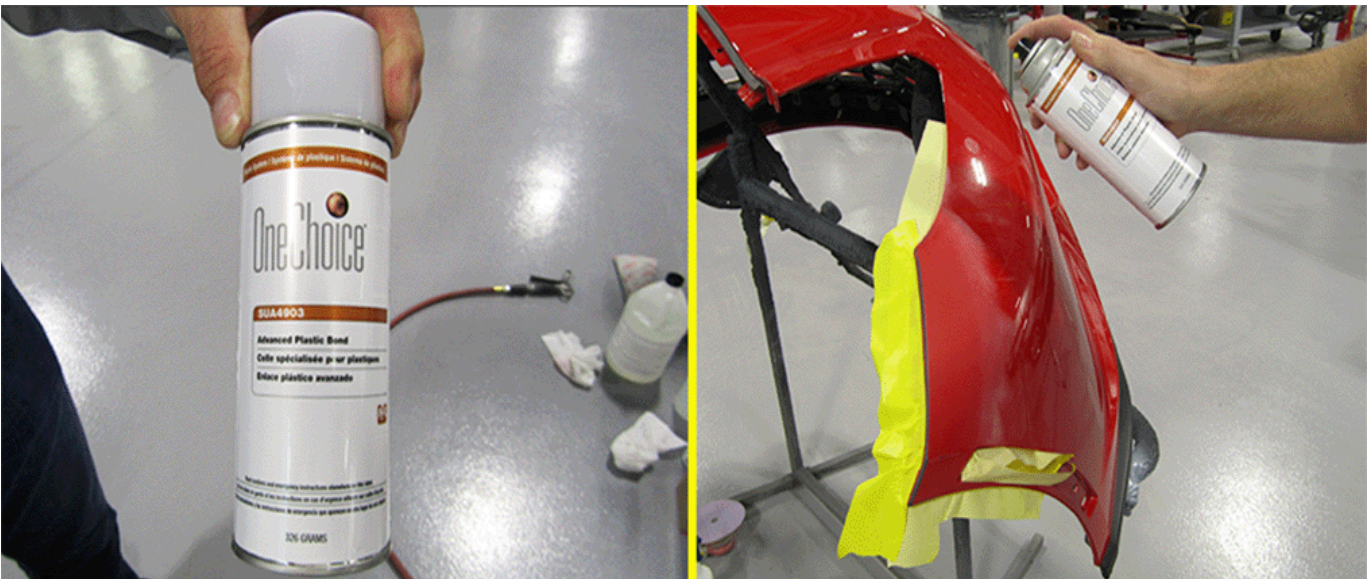
4891608

7. Clean again with a Universal Plastics Cleaner.



4891612

8. Scuff the adjacent fascia and lamp mounting surfaces with a 3M Scotch Brite™ Red Hand Pad and tape off as necessary.



4891613

**Important:** Use GMW 15406 approved Adhesion Promoters.

9. Apply “All in One” or Universal Plastic Adhesion Promoter to the repair area(s). In our case, the paint manufacturer’s recommendation was a PPG Adhesion Promoter.

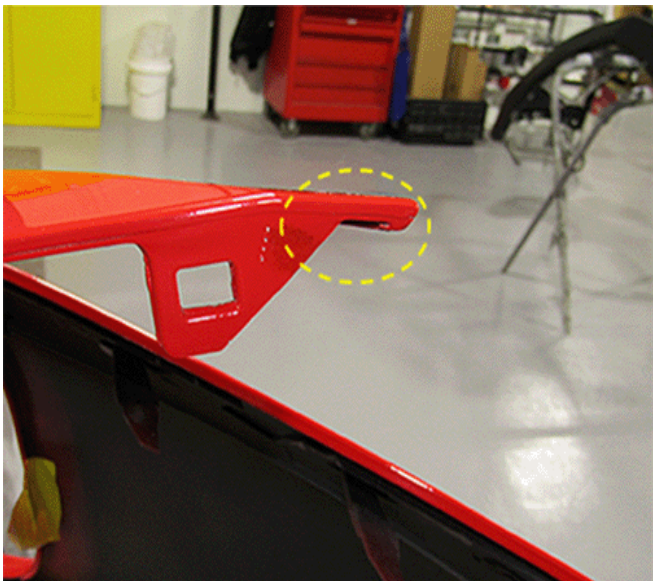




4891616

**Important:** Maintain a minimal primer and paint thickness in areas where the fascia will contact an interfacing panel.

10. Apply 2K catalyzed primer to the repair area(s), following your paint manufacturer's recommendation.
11. Final prep, refinish and clearcoat the fascia(s) following the GM Approved Refinish Materials booklet and your paint manufacturer's recommendations.



4891618

**Important:** Ensure the front fascia paint is allowed to fully cure before applying the mylar tape.

**Note:** The right side location of the mylar tape is shown circled in the graphic above.

12. If the paint repair was completed on a FRONT fascia, add a piece of protective mylar tape to EACH front upper corner of the fascia, following the steps below:

- 12.1. Using the 3M referenced mylar tape from the part table below, or equivalent, cut 2 pieces, 25 mm (1.0 in) x 25 mm (1.0 in) in size.



4891621

- 12.2. Position the piece of tape to the corner of the fascia where it meets the fender, and press onto the fascia. Ensure the tape is OVER the parting line, but BELOW the fascia radius.

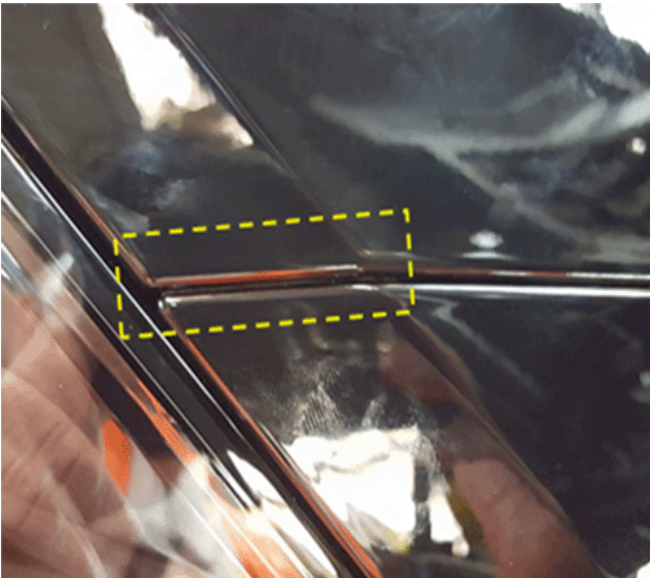


4891627

- 12.3. Using a razor blade, trim off the excess tape following the molded contour of the fascia.
- 12.4. Repeat mylar tape installation on the opposite side of the front fascia.

**Parts Information**

Replace fascia rivets, emblems, and front seal as necessary. Use the vehicle identification number (VIN), SI, and the GM Electronic Parts Catalog to determine the proper parts to order.



4891630

**Note:** As shown in the graphic above, no Mylar tape should be visible on the A-surface once the front fascia is reinstalled.

- 13. Reinstall the front and/or rear fascia(s). Refer to *Front Bumper Fascia Replacement* and/or *Rear Bumper Upper Fascia Replacement* in SI.

Causal Part	Description	Part Number	Qty
N/A	PROTECTOR-RKR PNL RR MLDG (mylar tape)	23494463	As needed

## Warranty Information

For vehicles repaired under the Bumper-to-Bumper coverage (Canada Base Warranty coverage), use the following labor operation. Reference the Applicable Warranties section of Investigate Vehicle History (IVH) for coverage information.

Labor Operation	Description	Labor Time	Paint Code
1480938*	R & I Front Fascia, Partial Refinish Color/ Clearcoat, Replace Seal and Emblem	4.3 hrs**	AN
Add	With Tint Coat/ Tri-Coat Paint	0.3 hr	GC
1480948*	R & I Rear Upper Fascia, Partial Refinish Color/ Clearcoat, Replace Emblems (2) (2017 and 2018 MY's ONLY)	4.5 hrs**	AN
Add	With Tint Coat/ Tri-Coat Paint	0.3 hr	GC
1480958*	R & I Front AND Rear Upper Fascias, Partial Refinish Color/ Clearcoat, Replace Seal and Emblems (2017 and 2018 MY's ONLY)	8.0 hrs**	AV
Add	With Tint Coat/ Tri-Coat Paint	0.4 hr	GD
*This is a unique Labor Operation for Bulletin use only.			
**Includes repair/prime fascia, and Paint Mix Time			

<b>Version</b>	2
<b>Modified</b>	Released November 13, 2017 June 25, 2019 – Added the 2019 Model Year, Russia and Thailand to Involved Region or Country, an Important to step #1 of the Service Procedure and a Specification to Labor Operations 1480948 and 1480958.

GM bulletins are intended for use by professional technicians, NOT a "do-it-yourselfer". They are written to inform these technicians of conditions that may occur on some vehicles, or to provide information that could assist in the proper service of a vehicle. Properly trained technicians have the equipment, tools, safety instructions, and know-how to do a job properly and safely. If a condition is described, DO NOT assume that the bulletin applies to your vehicle, or that your vehicle will have that condition. See your GM dealer for information on whether your vehicle may benefit from the information.



WE SUPPORT VOLUNTARY  
TECHNICIAN  
CERTIFICATION