



Service Bulletin

Bulletin No.: 18-NA-217

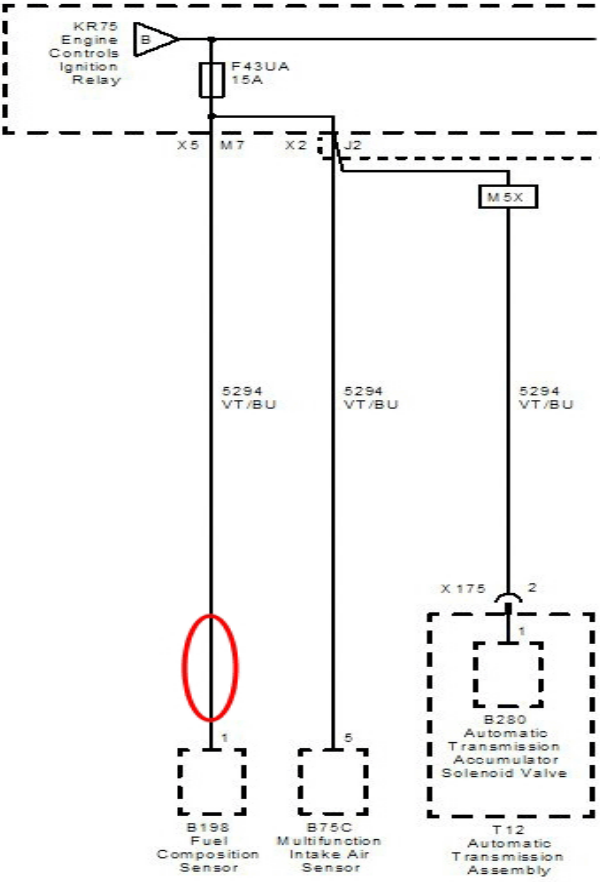
Date: May, 2019

TECHNICAL

Subject: Cruise Control Inoperative, Malfunction Indicator Lamp (MIL) Illuminated - DTCs P0097, P00F4, P0102 and/or P2199 Set

Brand:	Model:	Model Year:		VIN:		Engine:	Transmission:
		from	to	from	to		
Chevrolet	Silverado	2014	2018			L83, L86	
	Silverado LD	2019	2019				
GMC	Sierra	2014	2018				
	Sierra Limited	2019	2019				

Involved Region or Country	North America, Middle East, Israel, Thailand and Chile
Condition	<p>Some customers may comment that:</p> <ul style="list-style-type: none">• MIL is illuminated• Cruise control inoperative <p>Some technicians may find one or more of the following DTCs set:</p> <ul style="list-style-type: none">• P0097: Intake Air Temp (IAT) Sensor 2 Circuit Low Voltage in the Engine Control Module (ECM).• P00F4: Intake Air Humidity Sensor Circuit Low Voltage in the ECM.• P0102: Mass Air Flow (MAF) Sensor Circuit Low Frequency in the ECM.• P2199: Intake Air Temp (IAT) Sensor 1-2 Not Plausible in the ECM. <p>Some technicians may also find fuse #43 open.</p>

Cause	 <p style="text-align: right;">5118293</p> <p>This condition may be caused by a short in circuit 5294 near the fuel composition sensor electrical connector. ⇒ Refer to Document ID: 4694347 in SI.</p>
Correction	Validate and inspect the engine wiring harness at the fuel composition sensor (Flexible Fuel Sensor), follow the <i>Wire to Wire Repair</i> in SI to cut the wire and cap it off.

Service Procedure

1. Raise the vehicle.
2. With a suitable light, inspect the wiring harness.
Located along driver's side frame rail near electronic brake control module.





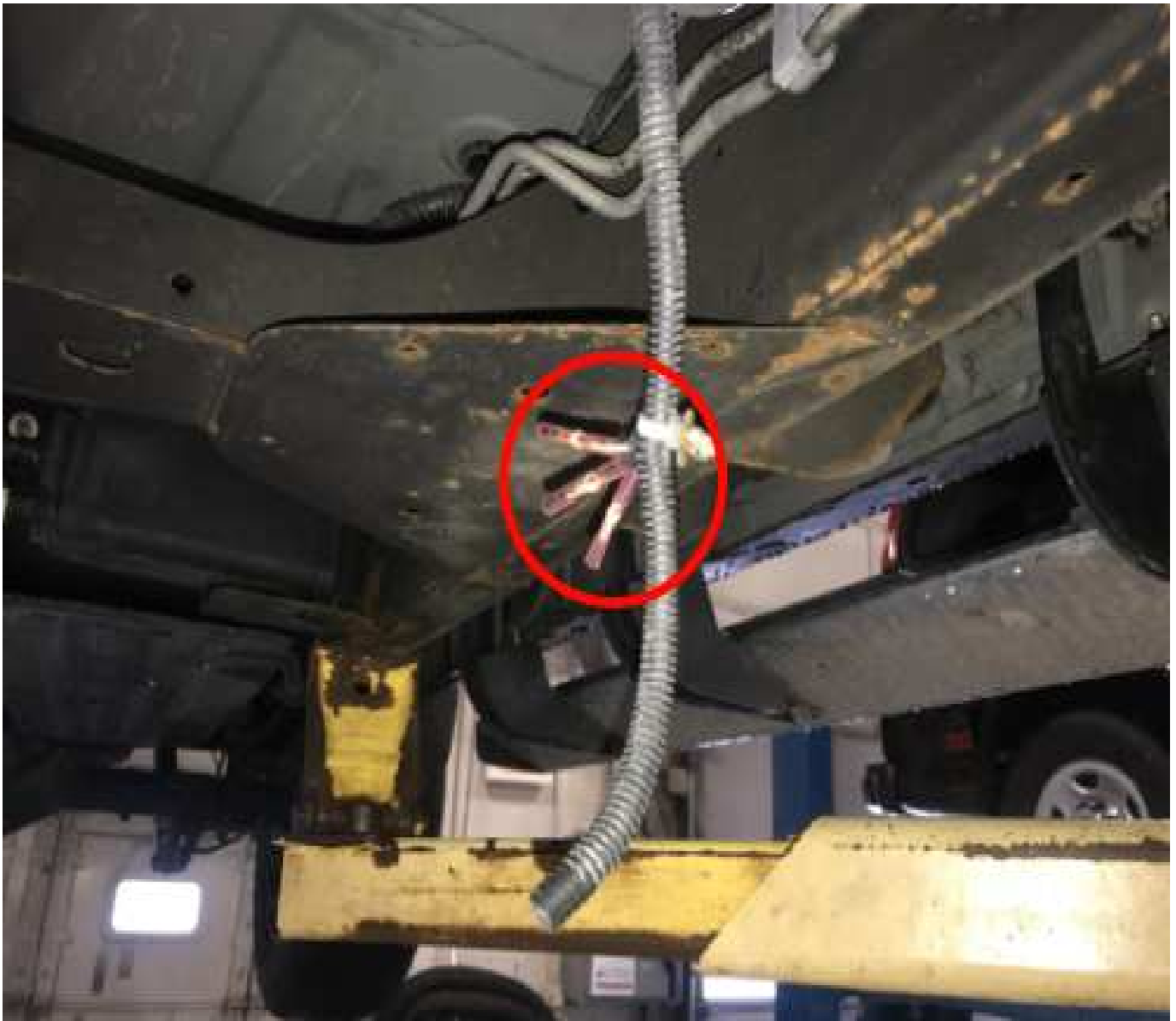
• Example of wiring harness in normal condition.

5328976



5330264

- Example of wiring harness in a damaged condition
3. Remove the wire connection point from the frame, pull back the casing for the wire.
 4. Cut the wire an inch from the back pin and cap the wire off with a Sealed Splice Crimp Matrix.
– Refer to *Wire to Wire Repair* in SI.



5328979

5. Using Woven Polyester Electrical Tape (PET), tape off and reseal the capped wires.





5328983

6. Reattach the wire to the frame.



5328984

Parts Information

Causal Part	Description	Part Number	Qty
	Sealed Splice Crimp Matrix	12089189	3

Warranty Information

For vehicles repaired under the Bumper-to-Bumper coverage (Canada Base Warranty coverage), use the following labor operation. Reference the Applicable Warranties section of Investigate Vehicle History (IVH) for coverage information.

Labor Operation	Description	Labor Time
*5480668	Wire-to-Wire Repair	0.5 hr
*This is a unique Labor Operation for Bulletin use only.		

Version	3
Modified	Released June 28, 2018 Revised January 10, 2019 - Added 2019 K2's to Model section. Revised May 03, 2019 – Updated Model Years to 2014, Updated Correction and Service Procedure Section.

