



# Service Bulletin

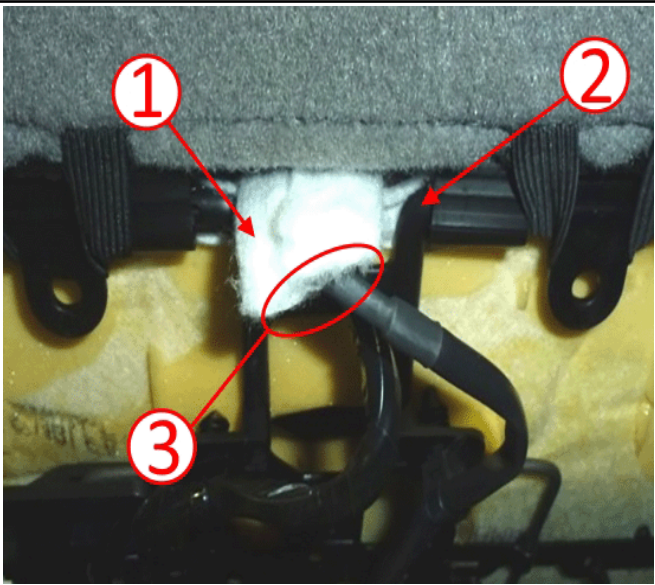
Bulletin No.: 17-NA-010

Date: February, 2019

## TECHNICAL

**Subject: Passenger Seat Airbag Warning Message On - DTC B0074 or B101D Set**

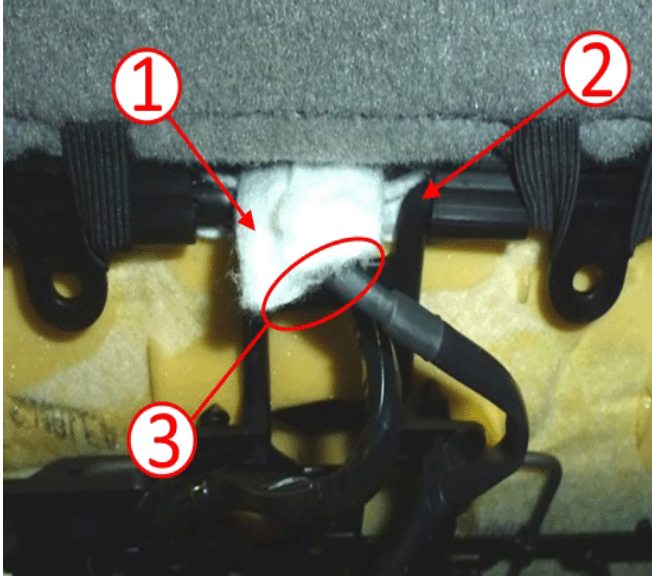
Brand:	Model:	Model Year:		VIN:		Engine:	Transmission:
		from	to	from	to		
Chevrolet	Impala (VIN 1)	2014	2016				
	Impala	2017	2018				

<b>Involved Region or Country</b>	North America, Korea, Middle East, Israel
<b>Condition</b>	<p>Some customers may comment that the Service Airbag Warning Message is on. The technician may find one of the following DTCs set:</p> <ul style="list-style-type: none"> <li>• B0074: Passenger Presence Sensor Circuit Malfunction set in the Passenger Presence Module</li> <li>• B101D: Electronic Control Unit Hardware set in the Passenger Presence Module</li> </ul>
<b>Cause</b>	This may be caused by the Passenger Presence System (PPS) sensor mat becoming loose or disengaged with seat usage over time.
<b>Correction</b>	<div style="text-align: center;">  </div> <p style="text-align: right; font-size: small;">4769349</p> <p><b>Important: DO NOT</b> open the felt (1) used covering the electrical connectors. If DTC B0074 or B101D is set, then the technician should proceed to replace the Sensor Mat and Passenger Presence System Module.</p>

## Service Procedure

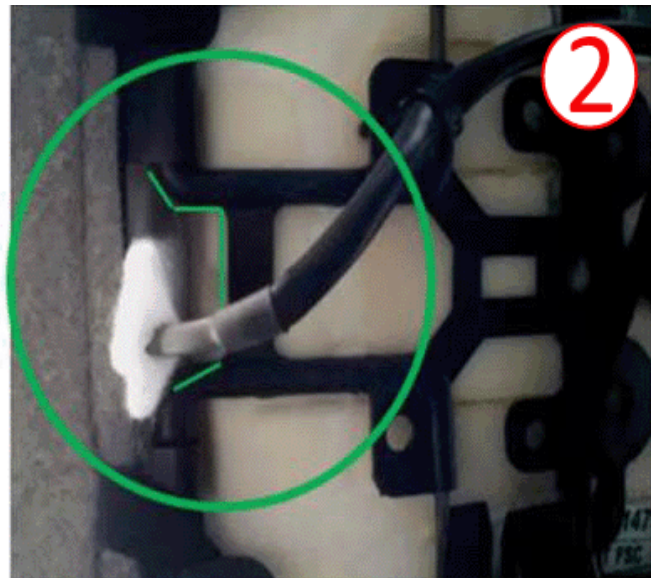
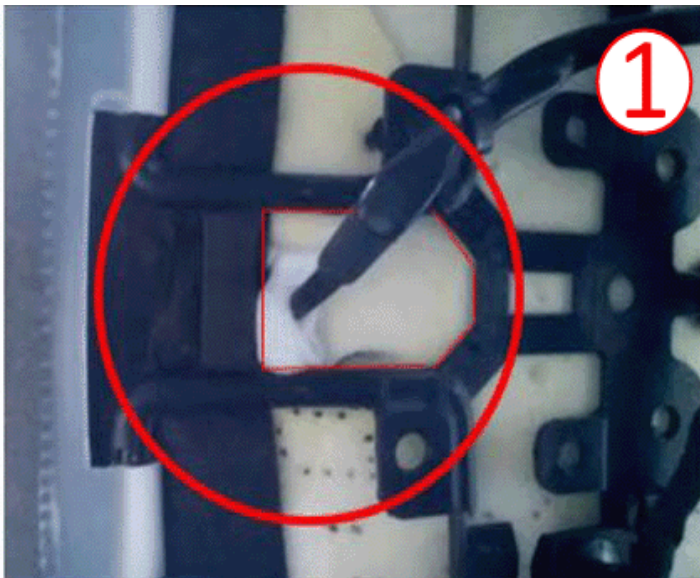
**Important:** When servicing DTC B0074 or B101D, ensure that the Passenger Presence Sensor Mat tail is correctly routed as shown in this bulletin.

1. Remove the passenger side seat. Refer to *Driver or Passenger Seat Removal and Installation* in SI.
2. Disconnect the electrical connectors, remove the seat cushion, and de-trim the cushion. Refer to *Front Seat Cushion Cover and Pad Replacement* in SI.



4769349

3. Using care, insert the PPS sensor mat pigtail (3) back through the foam opening making sure not to bend the sensor.
4. Install the cushion onto the seat frame.
  - The sensor tail must be routed through the rear suspension opening below the seat frame (2) hanging freely.
  - Validate the wiring harness (3) has proper movement.



4920551

**Note:** The graphic above depicts the incorrect pigtail harness route (1) and the correct pigtail harness route after repair (2).

5. Reconnect all electrical connectors and install the trim cover.
6. Install the passenger side seat.
7. Check the PPS Module for any DTCs in history status and clear DTC.
8. Perform the Passenger Presence System Preload Test (PPS Setup). Refer to *Passenger Presence System Preload Test (PPS Setup)* in SI.

### Parts Information

Causal Part	Description	Part Number	Qty
X	Sensor Kit, Airbag Front Passenger Presence	Refer to EPC	1
X	MODULE, AIRBAG FRT PASS PRESENCE		1

### Warranty Information

For vehicles repaired under warranty, use:

Labor Operation	Description	Labor Time
6450910	Airbag Front Passenger Presence Module Replacement	Use Published Labor Operation Time
6450950	Airbag Front Passenger Presence Sensor Replacement	

Version	5
<b>Modified</b>	<p>April 19, 2017 – Updated the Cause, Correction and Service Procedure.</p> <p>December 13, 2017 – Added the 2018 Model Year, updated the Service Procedure section and Warranty statement.</p> <p>January 02, 2019 – Updated the Correction, Service Procedure and Warranty Information sections and added Parts Information.</p> <p>February 15, 2019 – Updated the Parts Information section to refer to EPC.</p>

