



TECHNICAL SERVICE BULLETIN

6.7L - 176-Inch Wheelbase - Whistle Noise During Fuel Fill, Acceleration And/Or Braking - Built On 24-Jun-2018 And Through 31-Aug-2018

18-2356

28 November
2018

Model:

Ford 2019 F-Super Duty

Issue: Some 2019 F-Super Duty 176-inch wheelbase Crew Cab vehicles equipped with a 6.7L engine, a midship 48-gallon fuel tank, and built on 24-Jun-2018 and through 31-Aug-2018 may exhibit a whistle noise at the front of the fuel tank under the left hand side of the vehicle when the fuel level is 3/4 full or lower. This may be due to air moving through the front vapor valve fresh air vent tube during fuel fill, acceleration or braking.

Action: Follow the Service Procedure steps to correct the condition.

Parts

Part Number	Description	Quantity
HC3Z-9A089-A	Fresh Air Vent Tube Cap	1

Warranty Status: Eligible Under Provisions Of New Vehicle Limited Warranty Coverage And Emissions Warranty Coverage Warranty/ESP coverage limits/policies/prior approvals are not altered by a TSB. Warranty/ESP coverage limits are determined by the identified causal part and verified using the OASIS part coverage tool.

Labor Times

Description	Operation No.	Time
2019 F-Super Duty 6.7L SuperCrew 48 Gallon Fuel Tank: Remove The Fuel Tank Vent Tube And Install The Fresh Air Vent Tube Cap (Do Not Use With Any Other Labor Operations)	182356A	0.6 Hrs.

Repair/Claim Coding

Causal Part:	9002
Condition Code:	33

Tool List

Drive	Tool Name
3/8"	Ratchet
3/8"	Torque Wrench
3/8"	2" Extension
3/8"	Power Tool
3/8"	15 mm Socket
3/8"	18 mm Socket
3/8"	13 mm Deep Socket
	15 mm Wrench

Service Procedure

1. Is the customer concern a whistle noise during fuel fill, acceleration or braking?
 - (1). Yes - proceed to Step 2.

(2). No - this article does not apply.

2. Install the fresh air vent tube cap.

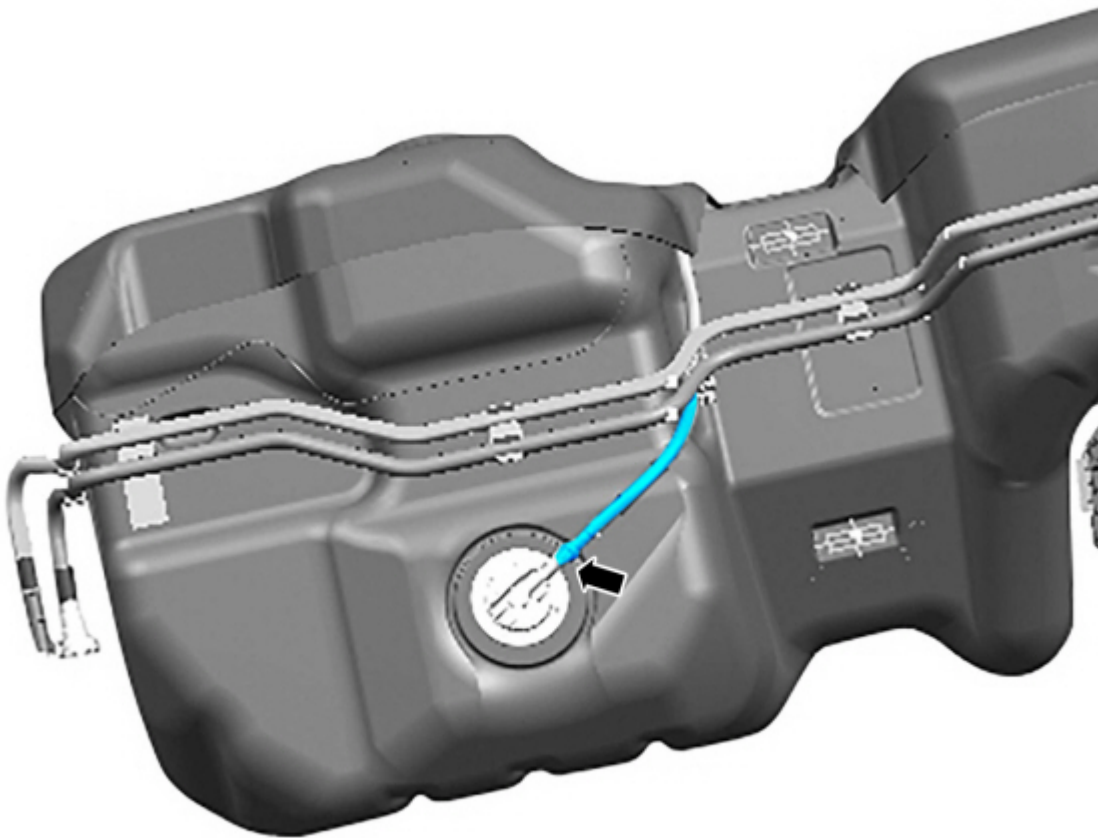
(1). If equipped, remove the fuel tank shield. Refer to Workshop Manual (WSM), Section 310-01C.

(2). Using a suitable lifting and lowering tool, support the fuel tank. Remove the fuel tank strap closest to the front of the vehicle and partially lower the fuel tank for access to the fuel vent tube attached to the fuel vapor vent valve. Refer to WSM, Section 310-01C.

(3). Remove and discard the fuel vent tube. The tube is removed by grasping the tube at the valve connection and pulling the tube off. (Figures 1 - 2)

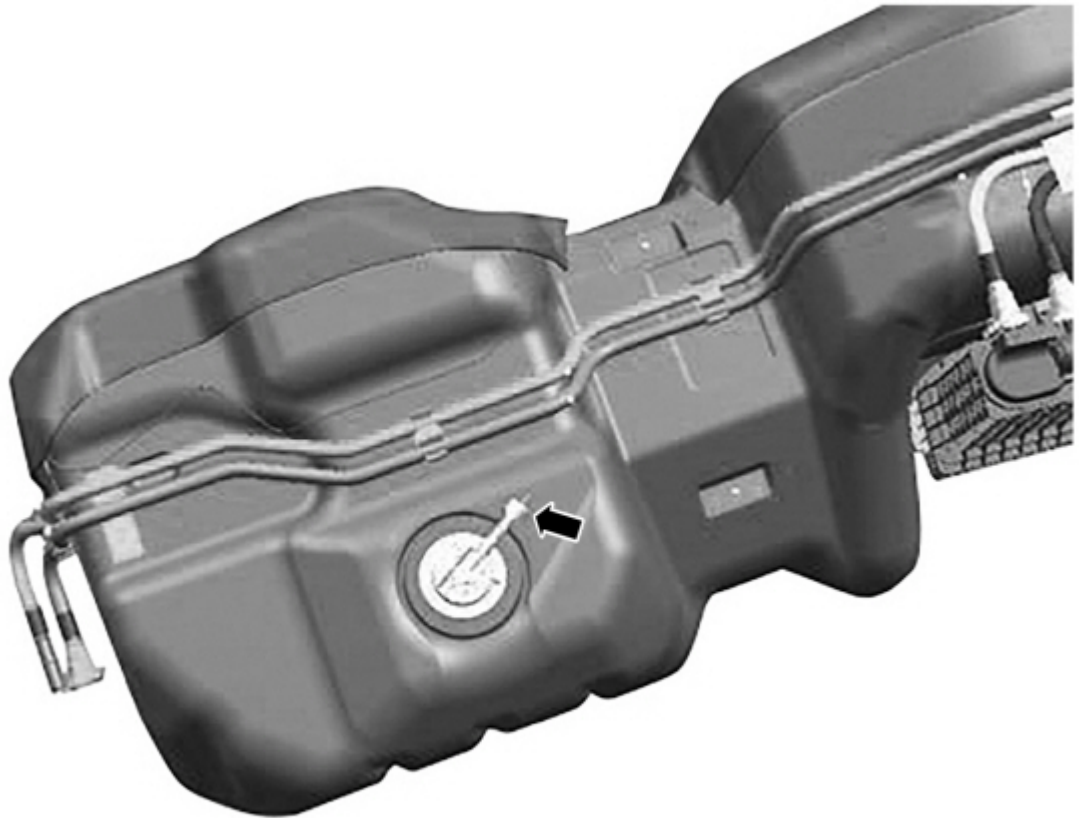
(4). Install the fresh air vent tube cap. (Figure 3)

Figure 1



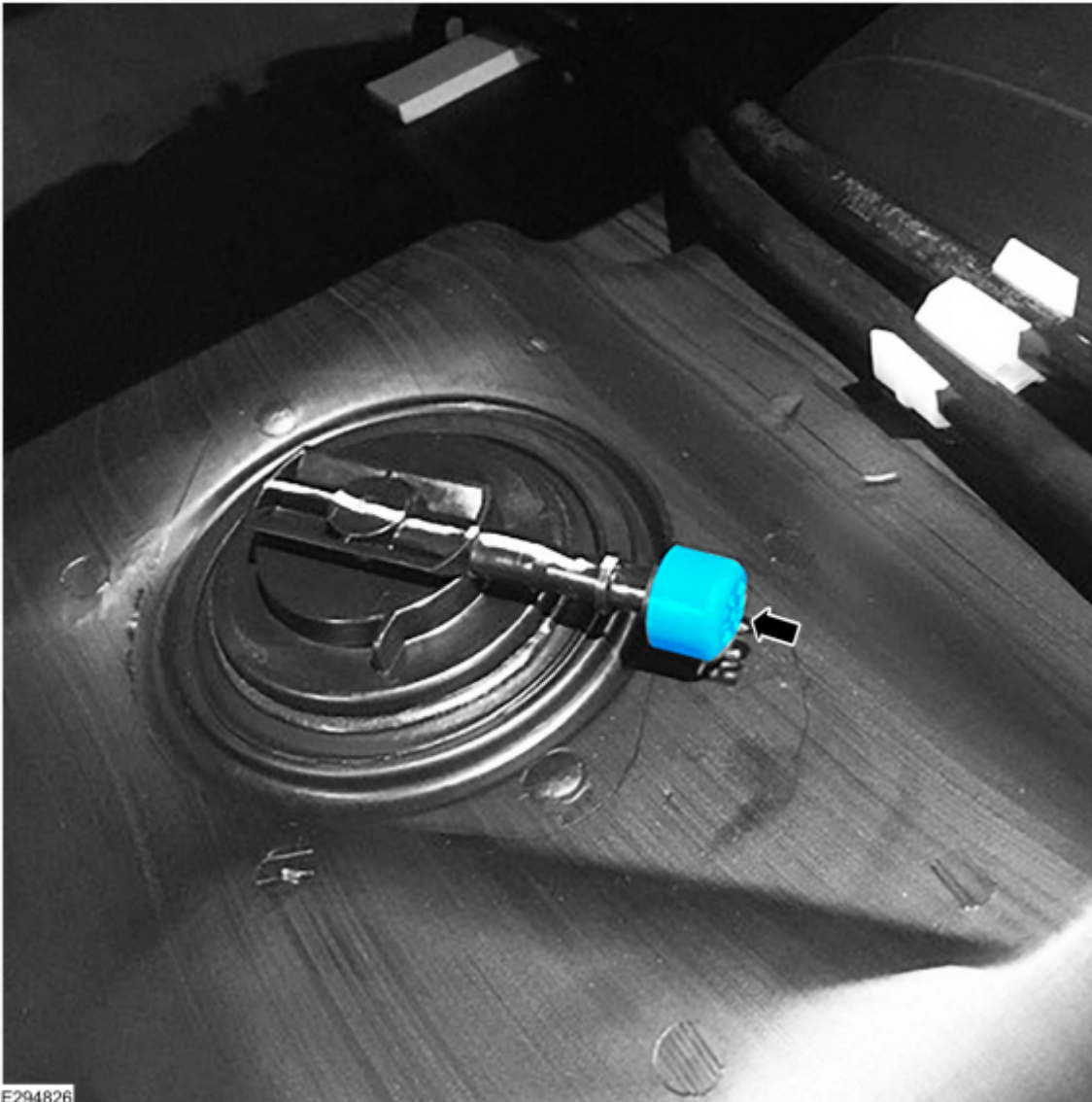
E294824

Figure 2



E294825

Figure 3



3. Install the fuel tank and the fuel tank shield if equipped. Refer to WSM, Section 310-01C.

© 2018 Ford Motor Company

All rights reserved.

NOTE: The information in Technical Service Bulletins is intended for use by trained, professional technicians with the knowledge, tools, and equipment to do the job properly and safely. It informs these technicians of conditions that may occur on some vehicles, or provides information that could assist in proper vehicle service. The procedures should not be performed by "do-it-yourselfers". Do not assume that a condition described affects your car or truck. Contact a Ford or Lincoln dealership to determine whether the Bulletin applies to your vehicle. Warranty Policy and Extended Service Plan documentation determine Warranty and/or Extended Service Plan coverage unless stated otherwise in the TSB article. The information in this Technical Service Bulletin (TSB) was current at the time of printing. Ford Motor Company reserves the right to supersede this information with updates. The most recent information is available through Ford Motor Company's on-line technical resources.