



# Service Bulletin

File in Section: -

Bulletin No.: 17-NA-010

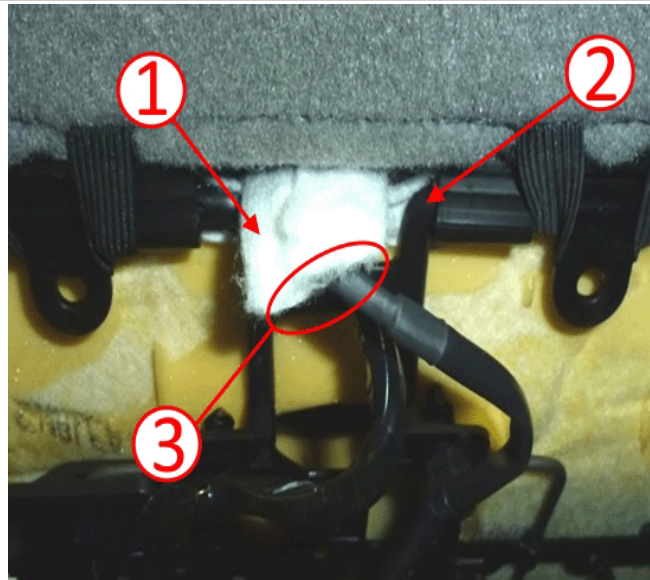
Date: December, 2017

## TECHNICAL

**Subject: Passenger Seat Airbag Warning Message On - DTC B0074 Set**

Brand:	Model:	Model Year:		VIN:		Engine:	Transmission:
		from	to	from	to		
Chevrolet	Impala (VIN 1)	2014	2016				
	Impala	2017	2018				

<b>Involved Region or Country</b>	North America, Korea, Middle East, Israel
<b>Condition</b>	Some customers may comment that the Service Airbag Warning Message is on. The technician may find DTC B0074 set.
<b>Cause</b>	The X2 connector at the Passenger Presence System (PPS) sensor mat may become loose or disengaged with seat usage over time. ⇒ This may be caused by an improperly routed sensor mat pigtail harness allowing it to become trapped above the seat suspension, or to be tightly routed around the seat frame, creating strain on the connection system.
<b>Correction</b>	<b>Important:</b> DO NOT replace the Passenger Presence System (PPS) module or Sensing and Diagnostic Module (SDM) if a loose terminal is detected during inspection. Validate proper routing of the PPS sensor mat pigtail harness, and the integrity of the X2 connection at the PPS sensor mat, following the Service Procedure provided in this bulletin. <ul style="list-style-type: none"> <li>If the PPS sensor mat pigtail harness is misrouted and creating strain on the X2 electrical connection, reroute the harness appropriately to ensure the PPS sensor mat pigtail is allowed to move freely with seat cushion motion.</li> <li>If the X2 connection has been found to be loose or disconnected and the cause of the DTC, flip the female terminal 180° from original orientation and reconnect to the male terminal blade on the PPS sensor mat. Ensure it is installed completely by pressing firmly against the connector.</li> </ul>



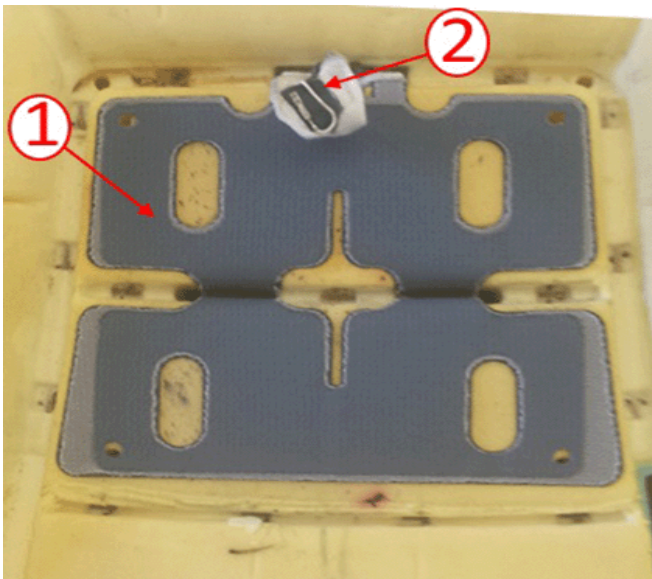
4769349

Inspect the PPS sensor mat pigtail harness routing through the seat suspension and around the frame. The correct routing is shown above.

Inspect the seats wiring harness routing around the seat frame (1):

- Sensor mat harness pigtail (3) may be doubled over and twisted with both the felt patch (1) and harness pigtail trapped between suspension guide and foam (2).
- PPS sensor mat pigtail harness should be routed to allow for minimal stress on the electrical connection system.

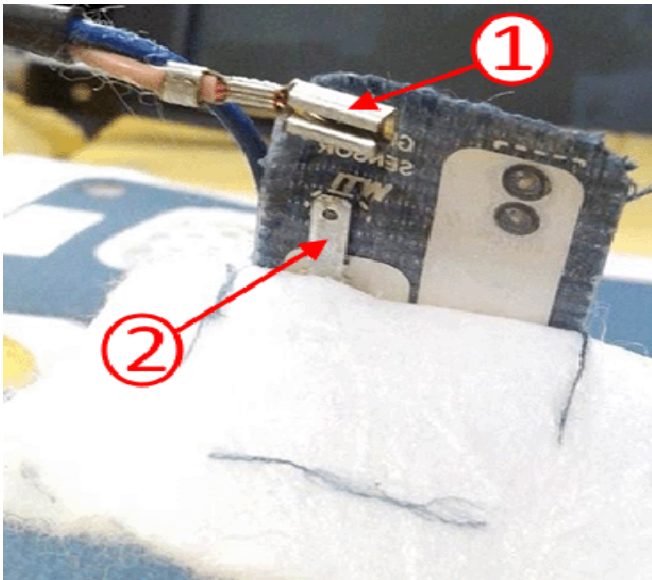
## Service Procedure



4624719

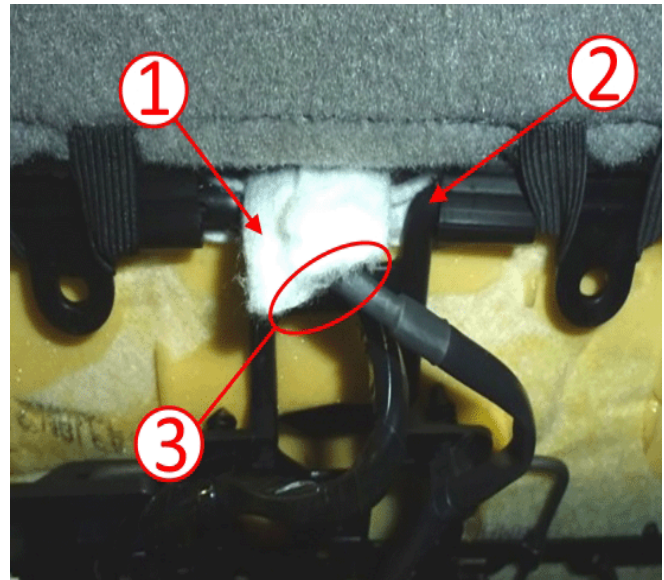
**Note:** To gain access to the PPS mat (1) and X2 electrical connection at the PPS sensor mat pigtail harness (2), removal of the seat cushion and trim cover from the seat is required.

1. Remove the passenger side seat. Refer to *Driver or Passenger Seat Removal and Installation* in SI.
2. Disconnect the electrical connectors, remove the seat cushion, and de-trim the cushion. Refer to *Front Seat Cushion Cover and Pad Replacement* in SI ([DOC ID 2901727](#)).
3. Using care, pull the PPS sensor mat pigtail harness (2) up through the foam opening.
4. Using care, remove the felt tape from covering the terminals of the X2 electrical connection.



4624711

5. Inspect the PPS sensor mat terminals (1) for loose or unseated connections.
6. If the female terminal is loose, flip the female terminal upside down (180°) from how it was originally inserted before reconnecting to the male blade making sure that it is fully seated.

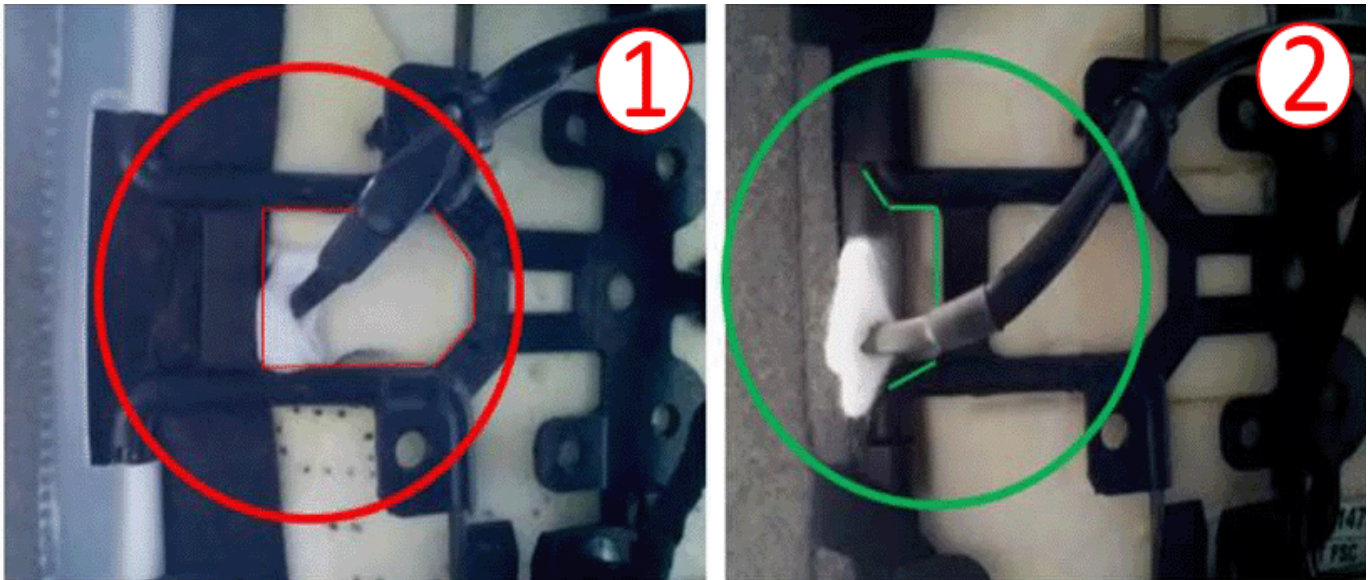


4769349

7. Wrap the spade connectors with felt tape (1) making sure the terminals are not exposed. Use additional electrical tape if necessary to secure the felt tape closed.

**Important:** The wiring harness must be routed properly away from the seat to allow for proper movement.

8. Using care, insert the PPS sensor mat pigtail (3) back through the foam opening making sure not to bend the sensor.
9. Install the cushion onto the seat frame.
  - The sensor tail must be routed through the rear suspension opening below the seat frame (2) hanging freely.
  - Validate the wiring harness (3) has proper movement.



4920551

**Note:** The graphic above depicts the incorrect pigtail harness route (1) and the correct pigtail harness route after repair (2).

10. Reconnect all electrical connectors and install trim cover.
11. Install the passenger side seat.
12. Check the PPS Module for the DTC B0074 in history status and clear DTC.
13. Perform the Passenger Presence System Preload Test (PPS Setup). Refer to *Passenger Presence System Preload Test (PPS Setup)* in SI.

### Warranty Information

For vehicles repaired under the Bumper-to-Bumper coverage (Canada Base Warranty coverage), use the following labor operation. Reference the Applicable Warranties section of Investigate Vehicle History (IVH) for coverage information.

Labor Operation	Description	Labor Time
7080398*	Check the X2 Electrical Connector and Reset Codes	0.2 hr
Add	Check Terminals and Wiring Harness Routing at the Passenger Presence Sensor Mat, Connect and Test	0.9 hr
*This is a unique Labor Operation for Bulletin use only.		

<b>Version</b>	3
<b>Modified</b>	April 19, 2017 – Updated the Cause, Correction and Service Procedure. December 13, 2017 – Added the 2018 Model Year, updated the Service Procedure section and Warranty statement.

GM bulletins are intended for use by professional technicians, NOT a "do-it-yourselfer". They are written to inform these technicians of conditions that may occur on some vehicles, or to provide information that could assist in the proper service of a vehicle. Properly trained technicians have the equipment, tools, safety instructions, and know-how to do a job properly and safely. If a condition is described, DO NOT assume that the bulletin applies to your vehicle, or that your vehicle will have that condition. See your GM dealer for information on whether your vehicle may benefit from the information.



WE SUPPORT VOLUNTARY  
TECHNICIAN  
CERTIFICATION