



TECHNICAL SERVICE BULLETIN

Exhaust Odor In Vehicle

18-2057

16 February
2018

This bulletin supersedes 17-0035. Reason for update: Incorrect Procedure

Model:

Ford 2015-2018 Edge
Lincoln 2016-2018 MKX

Summary

This article supersedes TSB 17-0035 to update the Service Procedure.

Issue: Some 2015-2018 Edge and 2016-2018 MKX vehicles may exhibit an exhaust odor in the vehicle while the climate control system is in auto or recirculation mode. Customers may indicate the odor smells like sulfur or exhaust odors are entering the vehicle cabin. This concern may be more pronounced after hard acceleration, driving in hilly conditions and/or towing a trailer. Whether and to what extent any occupant of these vehicles experiences the exhaust odor will be affected by driving habits, weather, and individual sensitivities.

Action: Follow the Service Procedure steps to correct the condition.

Parts

Part Number	Description	Quantity
TA-2-B	Motorcraft® Seam Sealer	1
EM2Z-61280B62-CA	Edge Large Air Extractor, Right	1
FT4Z-61280B62-C	MKX Large Air Extractor, Right	1
EM2Z-61280B62-H	Edge Large Air Extractor, Left	1
FT4Z-61280B62-D	MKX Large Air Extractor, Left	1
FT4Z-58280B62-A	Edge/MKX Small Air Extractor, Right	1
FT4Z-58280B63-C	Edge/MKX Small Air Extractor, Left	1

Warranty Status: Eligible Under Provisions Of New Vehicle Limited Warranty Coverage Warranty/ESP coverage limits/policies/prior approvals are not altered by a TSB. Warranty/ESP coverage limits are determined by the identified causal part and verified using the OASIS part coverage tool.

Labor Times

Description	Operation No.	Time
Use SLTS Operations If Available; Claim Additional Diagnosis Or Labor Performed As Actual Time	MT182057	Actual Time

Repair/Claim Coding

Causal Part:	61280B62
Condition Code:	42

Service Procedure

1. Does the customer report an exhaust odor inside the vehicle under hard acceleration, towing a trailer, driving in hilly conditions or with the climate control system in auto or recirculate?
 - (1). Yes – proceed to Step 2.
 - (2). No – this article does not apply.
2. Visually inspect the rear liftgate weatherstrip seal for proper seating to the body of the vehicle. Reposition the liftgate weatherstrip seal as necessary.
3. Check the weatherstrip contact mark around the entire liftgate to make sure the liftgate is correctly aligned. Reposition the liftgate as required to obtain a proper seal. Refer to Workshop Manual (WSM), Section 501-03.
 - (1). View the weatherstrip contact mark from different angles to make sure it can be seen clearly.
 - (2). A slight weatherstrip print gap at the bottom center of the liftgate near the latch area is normal and corresponds with the weatherstrip joint seam.
4. Make sure the liftgate drain plugs are installed correctly on the liftgate. Reposition as required.
 - (1). MKX (Figure 1)
 - (2). Edge (Figure 2)

Figure 1



E275345

Figure 2



E275346

5. Remove the rear lamp assemblies. Refer to WSM, Section 417-01.
6. Inspect for holes or gaps on the horizontal and vertical surfaces of the body and liftgate near the rear tail lamps and light bar assembly. Seal with Motorcraft® Seam Sealer or equivalent. (Figures 3 - 4)

Figure 3



E275347

Figure 4



E275348

7. Verify all rear tail lamp and light bar assembly body plugs, plastic anchor nuts and wiring grommets are fully seated against the body and liftgate. (Figure 5)

Figure 5



E275349

8. On MKX vehicles remove the right and left rear quarter panel moulding. Refer to WSM, Section 501-08.
9. Remove the rear bumper cover. Refer to WSM, Section 501-19.
10. Check that all rear body plugs and plastic anchor nuts located beneath the bumper cover are fully seated against the body. (Figure 6)

Figure 6

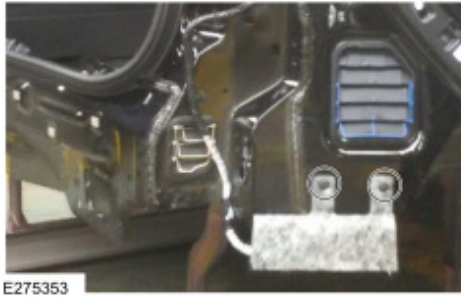


E275350

11. Make sure the two plastic pushpins used to attach the sound insulation piece to the lower edge of the body

are fully seated. (Figure 7)

Figure 7



12. Inspect the rear liftgate and verify that all four plastic license plate anchor points are sealed.

(1). Example of missing lower anchor points. (Figure 8)

Figure 8



13. Raise the vehicle on the hoist and verify all underbody plugs and grommets are fully seated. (Figures 9 - 13)

Figure 9

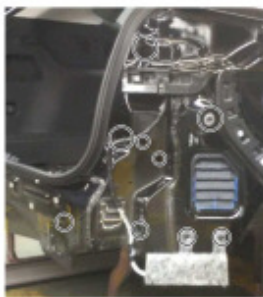


Figure 10



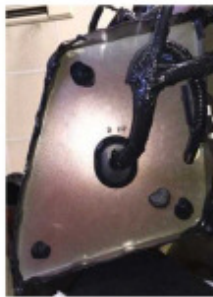
Figure 11



Figure 12



Figure 13



14. Verify the air extractors are not deformed. A slight gap of approximately 1 mm (0.029in.) between the rubber flap and extractor body is normal. Replace the air extractor if it is damaged or warped.
15. Reinstall the rear bumper cover. Refer to WSM, Section 501-19.
16. Reinstall the rear tail lamp assemblies. Refer to WSM, Section 417-01.
17. Reinstall the right and left rear quarter panel splash shields and wheel opening trim mouldings. Refer to WSM, Section 501-08.
18. Reprogram the front controls interface module (FCIM) to the latest calibration using Integrated Diagnostic System (IDS) or Ford J2534 Diagnostic Software (FJDS) release 108.03 or higher. Make sure you are connected to the internet when entering module programming to obtain the latest updates. Calibration files may also be obtained at www.motorcraftservice.com.
 - (1). When reprogramming the FCIM, IDS or FJDS will have additional questions which will require a yes response to reprogram the module.

© 2018 Ford Motor Company

All rights reserved.

NOTE: The information in Technical Service Bulletins is intended for use by trained, professional technicians with the knowledge, tools, and equipment to do the job properly and safely. It informs these technicians of conditions that may occur on some vehicles, or provides information that could assist in proper vehicle service. The procedures should not be performed by "do-it-yourselfers". Do not assume that a

condition described affects your car or truck. Contact a Ford or Lincoln dealership to determine whether the Bulletin applies to your vehicle. Warranty Policy and Extended Service Plan documentation determine Warranty and/or Extended Service Plan coverage unless stated otherwise in the TSB article. The information in this Technical Service Bulletin (TSB) was current at the time of printing. Ford Motor Company reserves the right to supersede this information with updates. The most recent information is available through Ford Motor Company's on-line technical resources.