



Service Bulletin

PRELIMINARY INFORMATION

Subject: Cadillac ELR (EREV) Outside Rearview Mirror Charge Indicator LED Intermittent Operation During Charging

Models: 2014-2015 Cadillac ELR

This PI was superseded to update Recommendations/Instructions. Please discard PIC6064.

The following diagnosis might be helpful if the vehicle exhibits the symptom(s) described in this PI.

Condition/Concern

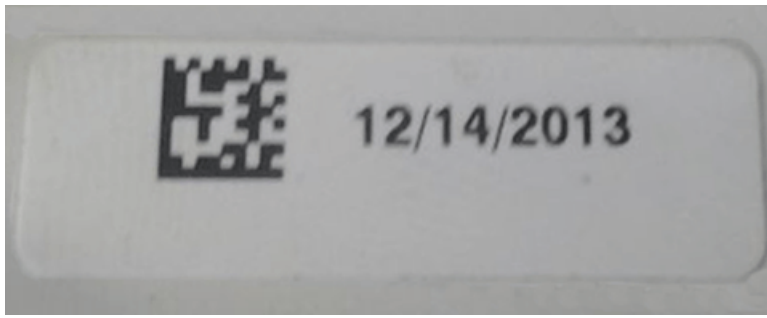
A customer may comment that the Outside Rearview Mirror Charge Status Indicator LED lamps may be intermittently inoperative on either side of the vehicle

Recommendation/Instructions

This concern may be difficult to duplicate and there may not be any DTCs stored.

- Check for a poor connection between the terminals at the Outside Rearview Mirror Charge Indicator LED Lens assembly and the harness connector. The terminals on the circuit board located inside the Lens may not extend outward far enough to engage and make proper contact with the female terminals in the harness connector when the connector is locked into position.
- The mirror assembly may have been replaced on a prior date. Do not use the vehicle build date to determine the sticker date on the lens assembly. The date code located on the sticker that is mounted on the back side of the Outside Rearview Mirror Charge Status Indicator LED Lens assembly must be checked.





- If the date on the sticker adhered to the backside of the Outside Rearview Mirror Charge Status Indicator LED Lens assembly is earlier than June of 2014, the Outside Rearview Mirror Charge Indicator LED Lens assembly will need to be replaced.

Warranty Information

For vehicles repaired under warranty use:

Labor Operation	Description	Labor Time
2041160	Outside Rearview Mirror Turn Signal Lamp Replacement	0.3
Diagnosis Time	To perform electrical diagnosis	0.3

Please follow this diagnostic or repair process thoroughly and complete each step. If the condition exhibited is resolved without completing every step, the remaining steps do not need to be performed.

GM bulletins are intended for use by professional technicians, NOT a "do-it-yourselfer". They are written to inform these technicians of conditions that may occur on some vehicles, or to provide information that could assist in the proper service of a vehicle. Properly trained technicians have the equipment, tools, safety instructions, and know-how to do a job properly and safely. If a condition is described, DO NOT assume that the bulletin applies to your vehicle, or that your vehicle will have that condition. See your GM dealer for information on whether your vehicle may benefit from the information.



WE SUPPORT VOLUNTARY TECHNICIAN CERTIFICATION