



Service Bulletin

PRELIMINARY INFORMATION

Subject: Rear Of Engine Oil Leak

Models: 2015 Chevrolet Express, Silverado

2015 GMC Savana, Sierra

Equipped with 6.6L Duramax Diesel Engine RPO codes LGH or LML

This PI was superseded to update Model Years and Recommendation/Instructions. Please discard PIP4836.

The following diagnosis might be helpful if the vehicle exhibits the symptom(s) described in this PI.

Condition/Concern

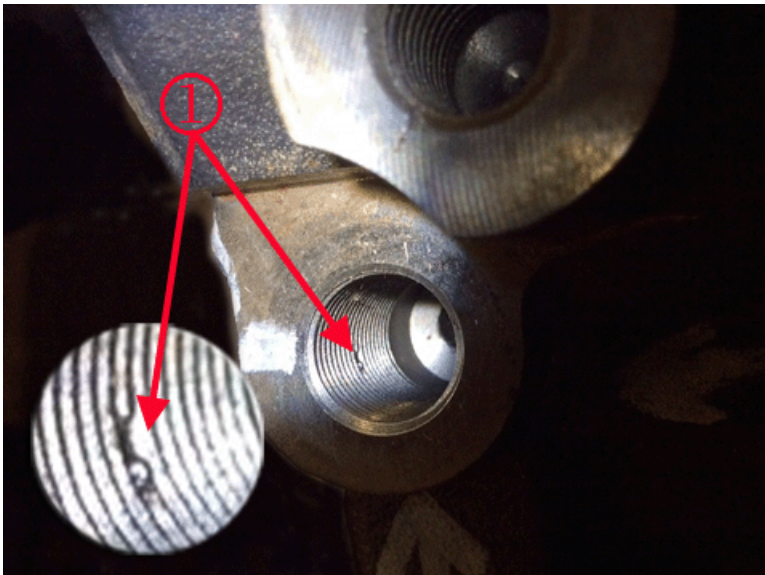
A dealer may encounter a customer concern of an engine oil leak. The oil leak may seem like it is emanating from the flywheel housing cover sealing surface.

Recommendation/Instructions

Complete the current SI diagnostics for oil leak diagnosis.

Check for leaks at the turbocharger oil feed and oil drain line connections at the block and flywheel housing.

1. Inspect the turbocharger oil feed hole for signs of damage or porosity. Refer to picture below



2. Inspect for imperfections in the gasket sealing surfaces (lack of flatness, debris or damage to the feed line banjo fitting itself.)

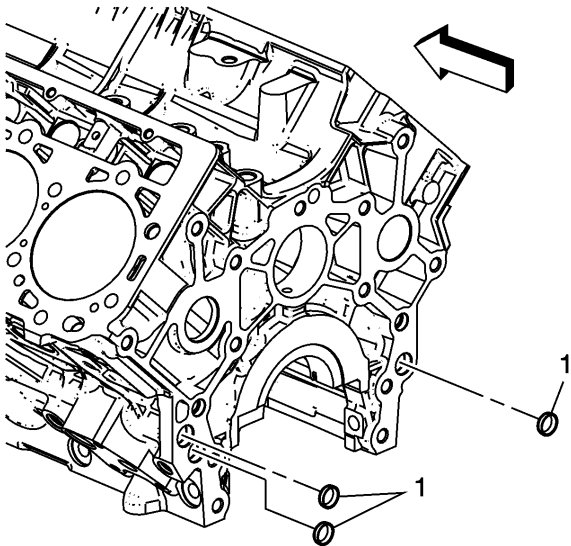


3. Check for leaks from the oil pan sealing surfaces. Leaks from the oil pan area could be from the sealing surfaces of the upper oil pan, upper oil pan to flywheel housing and/or from the lower oil pan to upper oil pan.

Important: If repairs are made to the oil pan sealing surfaces be sure to clean both sides of the sealing surfaces with brake cleaner and allow to dry completely before re-assembling.

4. Check for leaks at the engine oil cooler. Leaks from the oil cooler can be caused by debris or damage to the oil cooler O-ring.
5. Check for leaks at the engine block oil gallery cup plugs.

There are sub-oil galleries that run the full length of the block on both sides of the engine (same gallery that feeds oil pressure sensor). These galleries end at the rear of the block and are sealed with cup plugs (properly listed and available in GMSPO parts imager). Since these galleries run on either side of the engine this oil leak may be found on the right or left rear of engine. The flywheel housing cover must be removed to service these plugs.



If one oil gallery cup plug is found to be leaking, replace all three (two on the left and one on the right) cup plugs at the same time the flywheel housing is resealed.

Refer to Service Information Document for Engine Block Cleaning and Inspection for replacement information.

When replacing these oil gallery cup plugs use Loctite 272T (or Equivalent) part number 89021297 (in US) or 10953488 (in Canada) as a sealer.

During cup plug replacement ensure at least 1 mm of recess when pressing in the plug.

Parts Information

Part Number	Description	QTY
12651561	Plug, Engine Block Oil Galley (19mm)	3

Warranty Information

For vehicles repaired under warranty use:

Labor Operation	Description	Labor Time
4067010	Flywheel Housing Replacement	Use Published Labor Operation Time

Please follow this diagnostic or repair process thoroughly and complete each step. If the condition exhibited is resolved without completing every step, the remaining steps do not need to be performed.

Additional SI Keywords

Galley

GM bulletins are intended for use by professional technicians, NOT a "do-it-yourselfer". They are written to inform these technicians of conditions that may occur on some vehicles, or to provide information that could assist in the proper service of a vehicle. Properly trained technicians have the equipment, tools, safety instructions, and know-how to do a job properly and safely. If a condition is described, DO NOT assume that the bulletin applies to your vehicle, or that your vehicle will have that condition. See your GM dealer for information on whether your vehicle may benefit from the information.



WE SUPPORT VOLUNTARY TECHNICIAN CERTIFICATION