



# Service Bulletin

## INFORMATION

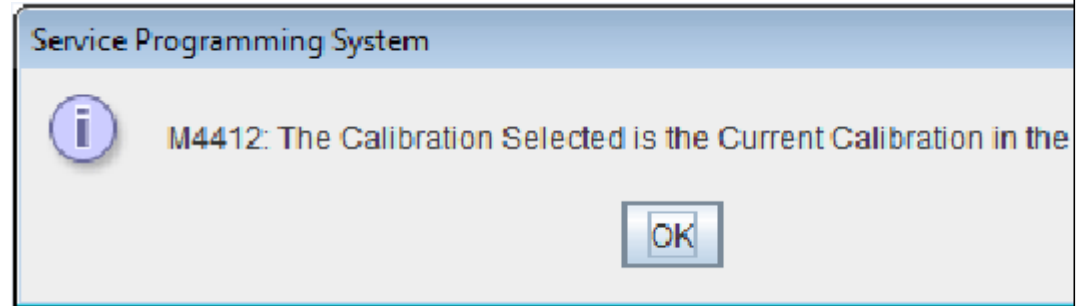
**Subject:** Information on Changes to SPS that Warn/Prohibit Reprogramming a Module With its Current Calibration

Brand:	Model:	Model Year:		VIN:		Engine:	Transmission:
		from	to	from	to		
Buick	GM Passenger Cars and Trucks	2018 and Prior		ALL	ALL	ALL	ALL
Cadillac							
Chevrolet							
GMC							

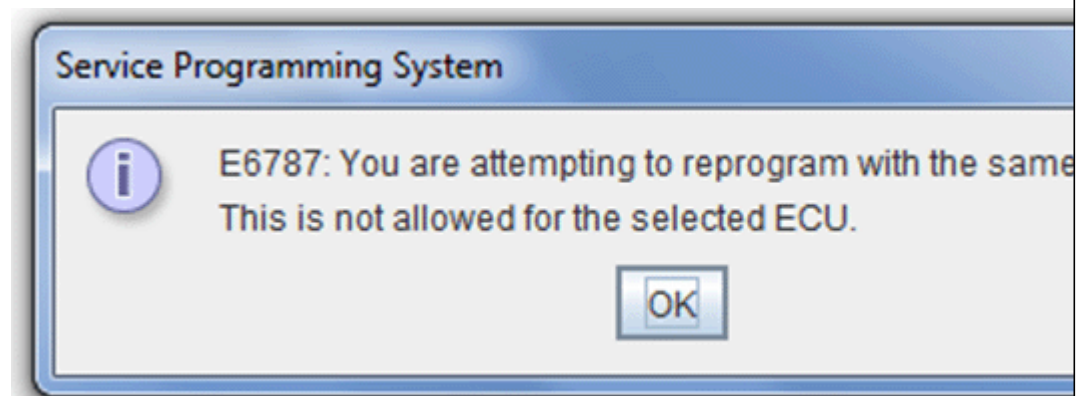
<b>Involved Region or Country</b>	North America and N.A. Export Regions
-----------------------------------	---------------------------------------

**Information**

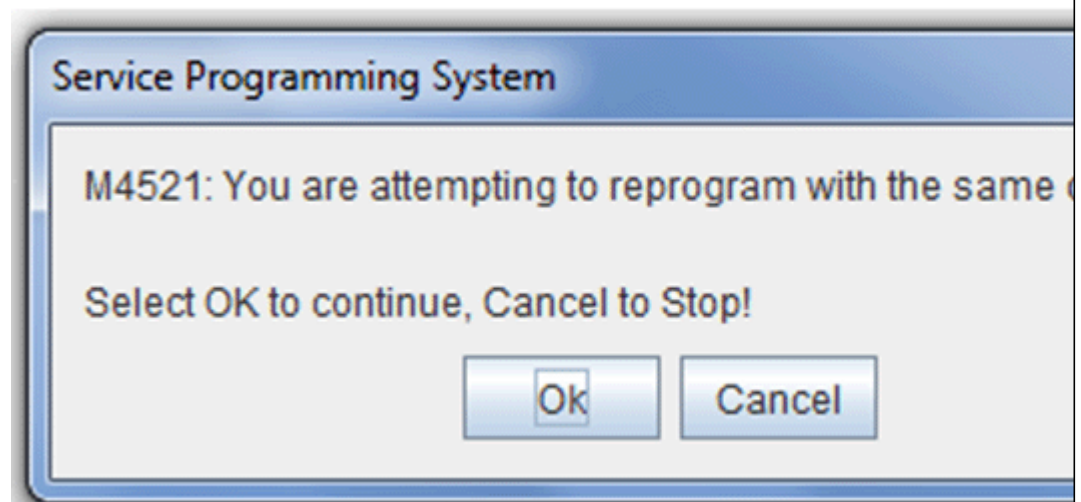
The service programming system team has made an update to SPS which will prohibit or warn against programming a control module with the same calibration already present in the controller. This condition may be caused by the change to the programming system made in an attempt to reduce unneeded programming events, reduce risk of programming induced faults, and support timely vehicle repair.



- Programming a control module with the salemarks Chevrolet (GM Korea) and Chevrolet (Holden) and with the same calibration already in the module, will be prohibited. If you attempt to reprogram a module with its current calibration you will be prompted with the above warning message. You will not be allowed to redundantly reprogram the module. This message does Not indicate an issue with the module in question - pursue SI diagnostics for further root cause determination.

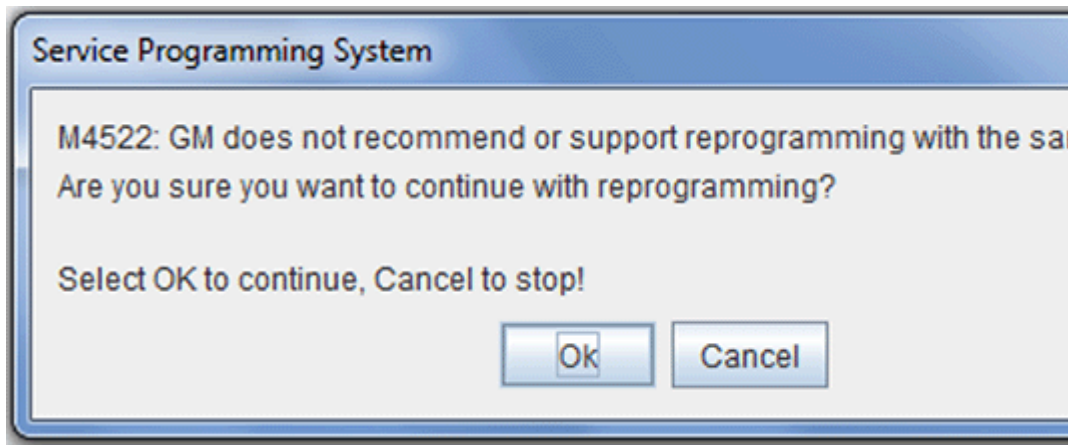


- **Model Year 2017 and Newer:** Programming a control module with the same calibration already in the module will be prohibited. If you attempt to reprogram a module with its current calibration you will be prompted with the above warning message. You will not be allowed to redundantly reprogram the module. This message does Not indicate an issue with the module in question - pursue SI diagnostics for further root cause determination.



- **Model Year 2016 and Older:** If you attempt to reprogram a module with its current calibration,

- **Model Year 2016 and Older:** If you attempt to reprogram a module with its current calibration, you will be prompted with the above warning message. This message does Not indicate an issue with the module in question - pursue SI diagnostics for further root cause determination.



- You are not required to hit cancel, you can click OK to continue with the reprogramming. If you click "OK" on the above warning you will be prompted with a second notice.
- As stated, it is not supported or recommended to reprogram the same module with its current calibration, however you can proceed with the reprogramming even by clicking "OK" on the above warning message.

## Parts Information

No parts are required for this repair.

<b>Version</b>	1
<b>Modified</b>	

GM bulletins are intended for use by professional technicians, NOT a "do-it-yourselfer". They are written to inform these technicians of conditions that may occur on some vehicles, or to provide information that could assist in the proper service of a vehicle. Properly trained technicians have the equipment, tools, safety instructions, and know-how to do a job properly and safely. If a condition is described, DO NOT assume that the bulletin applies to your vehicle, or that your vehicle will have that condition. See your GM dealer for information on whether your vehicle may benefit from this information.



WE SUPPORT VOLUNTARY TECHNICIAN CERTIFICATION