



# Service Bulletin

## PRELIMINARY INFORMATION

**Subject:** Diagnostic Tip - Diesel Exhaust Fluid System Contamination

**Models:** 2010 - 2017 Chevrolet Express, Silverado

2014 - 2015 and 2017 Chevrolet Cruze

2016 - 2017 Chevrolet Colorado

2010 - 2017 GMC Savana, Sierra

2016 - 2017 GMC Canyon

Equipped with the 1.6L, 2.0L, 2.8L or 6.6L Diesel Engines RPO codes L5P, LH7, LGH, LML, LUZ or LWN

*This PI was superseded to update Models and Model Years. Please discard PIP5370*

The following diagnosis might be helpful if the vehicle exhibits the symptom(s) described in this PI.

### Condition/Concern

A dealer may encounter a customer's concern of an exhaust fluid quality poor message on the DIC, a diesel exhaust fluid warning lamp on or other exhaust fluid quality related concerns.

### Recommendation/Instructions

During inspection of the diesel exhaust fluid (DEF) system and its components, the dealer may find or suspect contamination.

Always refer to Service Information for Contaminants in Diesel Exhaust Fluid Diagnosis and use special tools J26568 Coolant and Battery Fluid Tester or EN50422 Diesel Exhaust Fluid Refractometer for fluid testing.

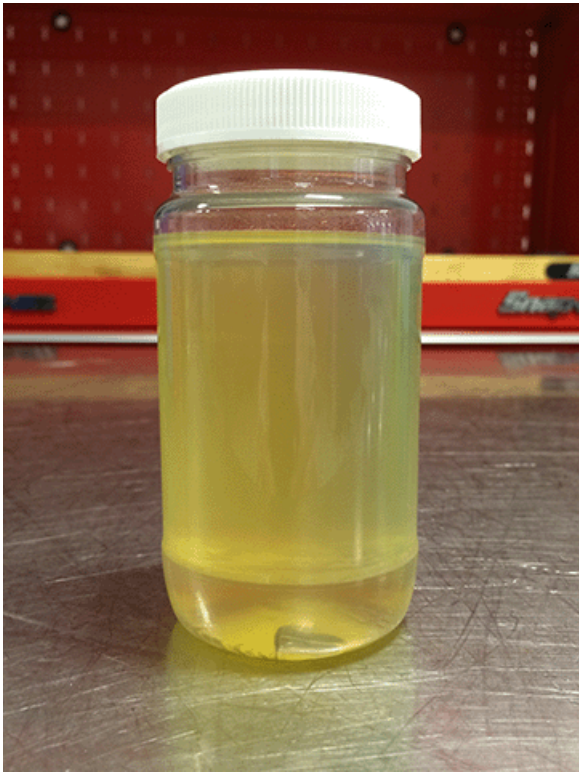
Below are examples of DEF mixed with different sources of contamination.



Diesel Exhaust Fluid (DEF) mixed with Brake Fluid.



Diesel Exhaust Fluid (DEF) mixed with Dexcool.



Diesel Exhaust Fluid (DEF) mixed with Diesel Fuel.



Diesel Exhaust Fluid (DEF) mixed with Engine Oil.



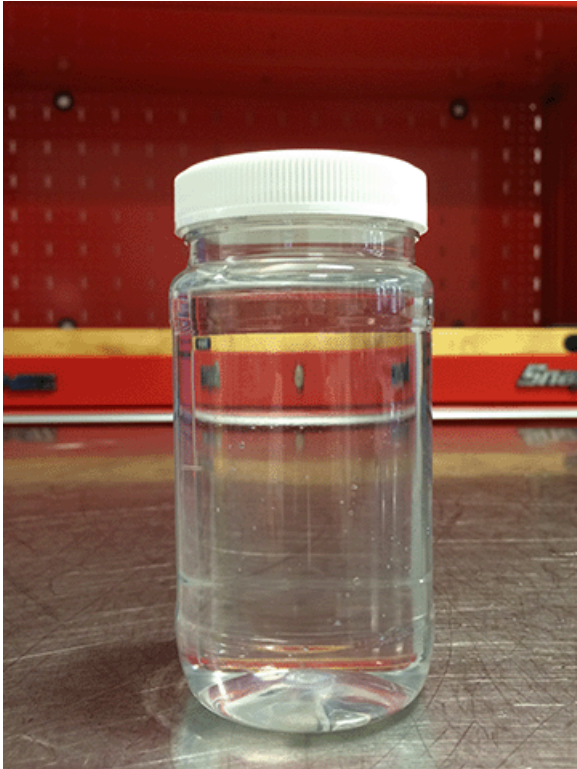
Diesel Exhaust Fluid (DEF) mixed with Power Steering Fluid.



Diesel Exhaust Fluid (DEF) mixed with Transmission Fluid.



Diesel Exhaust Fluid (DEF) mixed with Windshield Washer Fluid.



Diesel Exhaust Fluid (DEF) mixed with Water.

## Warranty Information

This PI is being published to help the technician to be able to identify the signs of contamination in Diesel Exhaust Fluid (DEF). If you see evidence of contamination take appropriate measures to ensure that all of the contaminated fluid is removed from the vehicle. Any components that have failed as a result of contamination should NOT be covered by warranty.

Please follow this diagnostic or repair process thoroughly and complete each step. If the condition exhibited is resolved without completing every step, the remaining steps do not need to be performed.

GM bulletins are intended for use by professional technicians, NOT a "do-it-yourselfer". They are written to inform these technicians of conditions that may occur on some vehicles, or to provide information that could assist in the proper service of a vehicle. Properly trained technicians have the equipment, tools, safety instructions, and know-how to do a job properly and safely. If a condition is described, DO NOT assume that the bulletin applies to your vehicle, or that your vehicle will have that condition. See your GM dealer for information on whether your vehicle may benefit from the information.



WE SUPPORT VOLUNTARY TECHNICIAN CERTIFICATION