



Service Bulletin

PRELIMINARY INFORMATION

Subject: Crack Around Left Hand Catalytic Converter Mounting Flange

Brand:	Model:	Model Year:		VIN:		Engine:	Transmission:
		from	to	from	to		
Chevrolet	Impala	2014	2016	All	All	3.6L RPO LFX	All
Cadillac	XTS	2013	2016	All	All	3.6L RPO LFX	All

Involved Region or Country	North America, Middle East & South Korea
Additional RPO/s:	LFX
Condition	Customer may experience noise from the exhaust and/or exhaust odor within the vehicle. Catalytic converter pipe cracking at the left hand (front bank) catalytic converter near cylinder head mounting flange weld. In rare instances the failure may reoccur after the catalytic converter has been replaced.
Cause	Under Engineering investigation.

Correction

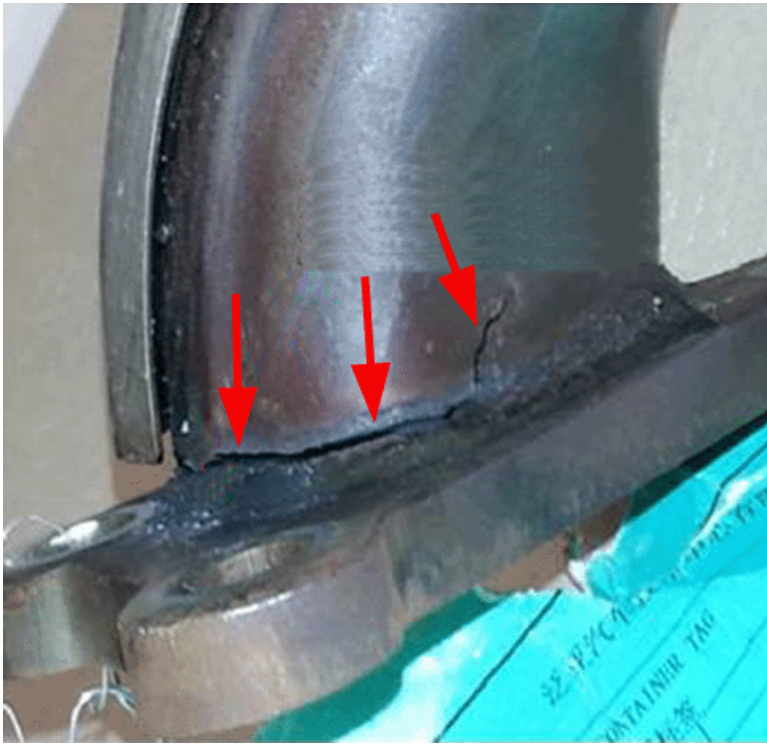
Verify the exhaust is stock and has not been damaged or modified in any way.

Verify all exhaust hangers and mounts are in place and not damaged.

If the above conditions are not applicable and the pipe is found to be cracked at the left hand (bank 2 / front) catalytic converter mounting flange, replace the catalytic converter with latest part number from GMSPO.

General Motors is working on a solution for this Condition/Concern. Once a repair solution is available, this PI will be updated with additional details.

Examples of a crack at the catalytic converter mounting flange:



Warranty Information

Labor Operation	Description	Labor Time
4050920	Catalytic Converter Replacement	Use Published Labor Operation Time

Version	2
Modified	10/17/2016 — to include exhaust odor in condition line

GM bulletins are intended for use by professional technicians, NOT a "do-it-yourselfer". They are written to inform these technicians of conditions that may occur on some vehicles, or to provide information that could assist in the proper service of a vehicle. Properly trained technicians have the equipment, tools, safety instructions, and know-how to do a job properly and safely. If a condition is described, DO NOT assume that the bulletin applies to your vehicle, or that your vehicle will have that condition. See your GM dealer for information on whether your vehicle may benefit from the information.



WE SUPPORT VOLUNTARY TECHNICIAN CERTIFICATION