



# Service Bulletin

File in Section: -

Bulletin No.: 16-NA-286

Date: September, 2016

## INFORMATION

**Subject:** Information on Various Hydraulic Brake Issues that Could Be Seen on Electric/ Hybrid Vehicles and Possible DTC C05AD, C0580 or P05FF

Brand:	Model:	Model Year:		VIN:		Engine:	Transmission:
		from	to	from	to		
Chevrolet	Malibu	2016	2017			HP4	All
Chevrolet	Volt	2016	2017			All	All

Involved Region or Country	North America and N.A. Export Regions
Condition	The purpose of this bulletin is to inform technicians to understand some types of hydraulic issues that could be found on Electric/hybrid brake systems.

### Hydraulic Issues That May Be Found on Electric/Hybrid Brake Systems

Below are a few examples of some commonly overlooked concerns that can be associated with the brake systems on electric/hybrid vehicles.

For the proper corrections of the conditions listed below, refer to the proper procedures in SI.

#### Kinked Metal Brake Line

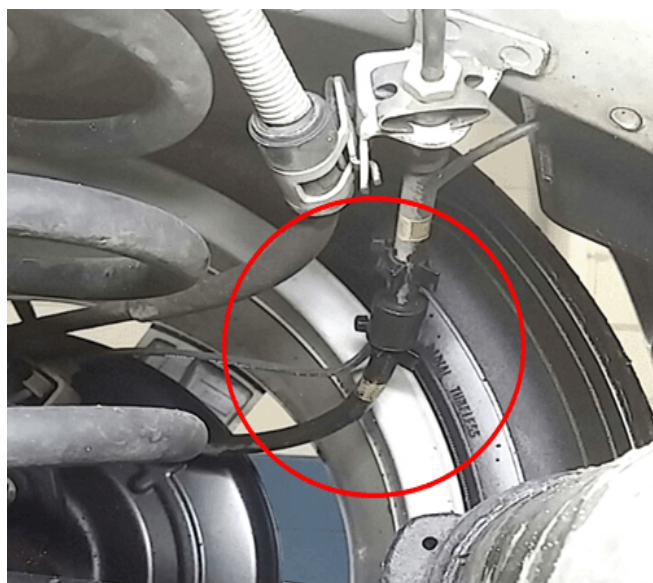


4565441

Example on the front brake line misrouted, causing the brake line to get kinked from hitting the shock tower when the wheel is turned.

This could cause a concern of brake apply pressure is reduced to the wheel. Could set code C05AD.

#### Rubber Brake Hose Rubbing on Tire



4565442



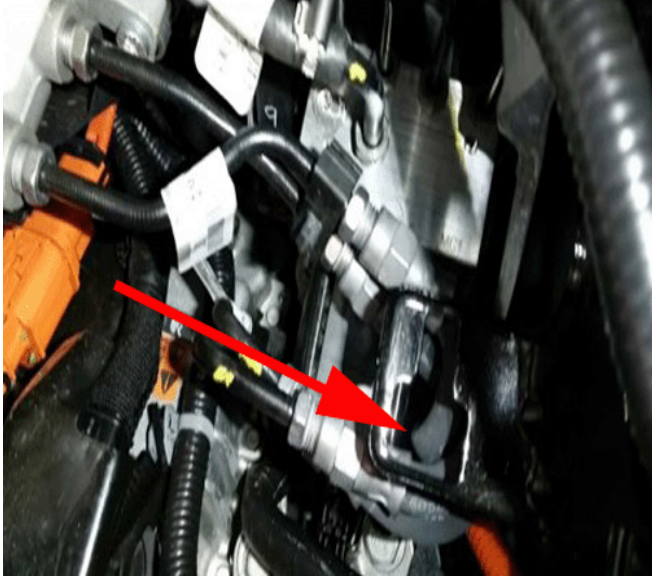
4565584

Brake hose is misrouted allowing the hose to rub through on the front wheel.

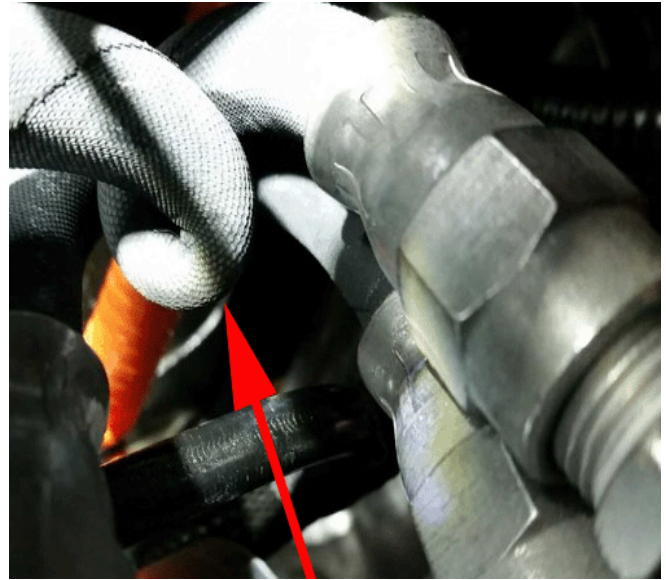
Cause could be the anti-rotation bracket not seated into the hole, which pushes the hose into the wheel.

This could cause a concern of a loss of brake fluid and brake apply. Could cause code(s): C05AD, C0580, P05FF.

#### Twisted Rubber Brake Hoses



4565443



4565585

Master Cylinder (MC) line from Secondary Port to MC2 is found twisted 360 degrees, causing pressure to get trapped in the brake system causing fault.

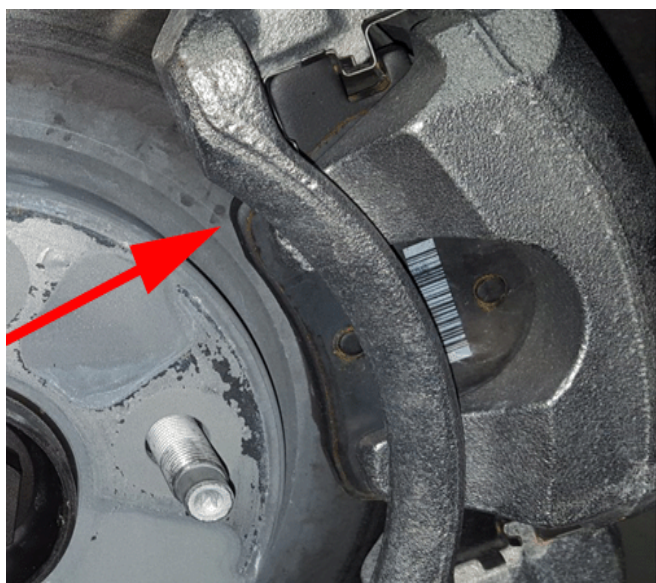
This could cause a concern at a speed of 45 mph (72 km/h) light coast with a light brake apply C05AD code setting ABS, Traction and Check engine light.

#### Bent Brake Caliper Slide Pins

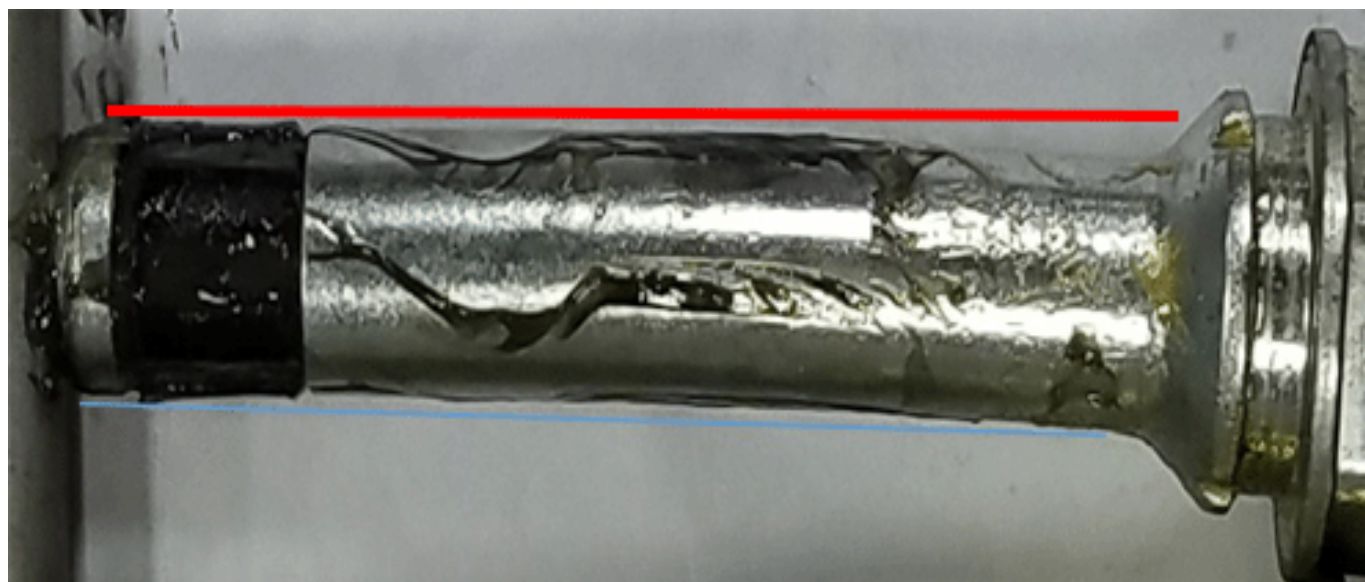


4565444





4565586



4565587

Upon visual inspection a technician may find the right front bleeder screw bent/cracked or brake rotor shows uneven pad contact.

Inspection of the guide pins could show a display of a bent caliper guide pins.

This could cause a concern of brake light on, or possible code set C05AD.

**Leak at Caliper Brake Hose to Caliper**

4565445

This concern could be caused by a reused brass crush washer causing a leak. The crush washer may have an oval shape and witness lines indicating multiple use.

**Important:** The brass crush washer can only be used one time. Always discard washer and replace with a new brass crush washers.



4565446

This concern may also be caused by the crush washer bolt being cross-threaded and retightened as illustrated above.

**Important:** When tightening the crush washer bolt, make sure to finger tight the bolt to guide to avoid cross threading when reinstalling.

Version	1
Modified	