



# Service Bulletin

## TECHNICAL

**Subject:** Passenger Seat Airbag Warning Message On, DTC B0081 00 and/or B0074 Set

Brand:	Model:	Model Year:		VIN:		Engine:	Transmission:
		from	to	from	to		
Chevrolet	Impala (VIN 1)	2014	2016				
	Impala	2017	2017				

<b>Involved Region or Country</b>	North America, Korea, Middle East, Israel
<b>Condition</b>	Some customers may comment that the Service Airbag Warning Message is on. The Technician may find DTC: <ul style="list-style-type: none"> <li>• B0081 00</li> <li>• B0074</li> </ul>
<b>Cause</b>	This condition may be caused by a loose electrical connection at the passenger side seat.

### Correction

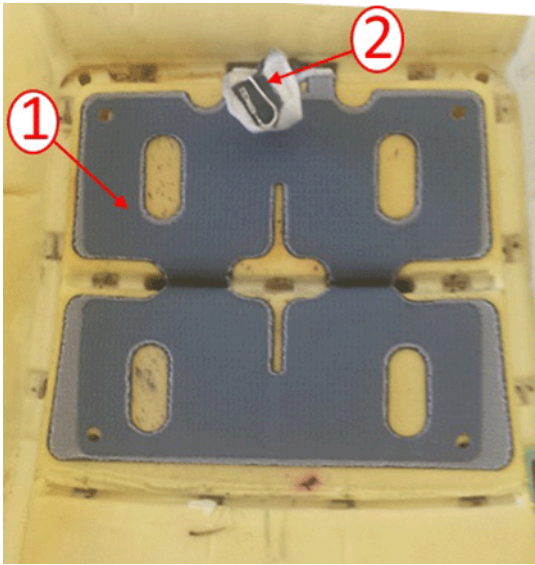
**Important:** DO NOT replace the Passenger Presence System (PPS) module or Sensing and Diagnostic Module (SDM) for this concern.

Validation of the X2 connector at the PPS module must be confirmed to be installed completely by pressing firmly against the connector and listening for an audible click sound.

If the connector has been found to be loose and the cause of the DTCs, perform the Passenger Presence System Preload Test (PPS Setup). Refer to *Passenger Presence System Preload Test (PPS Setup)* in SI. No further repair should be attempted.

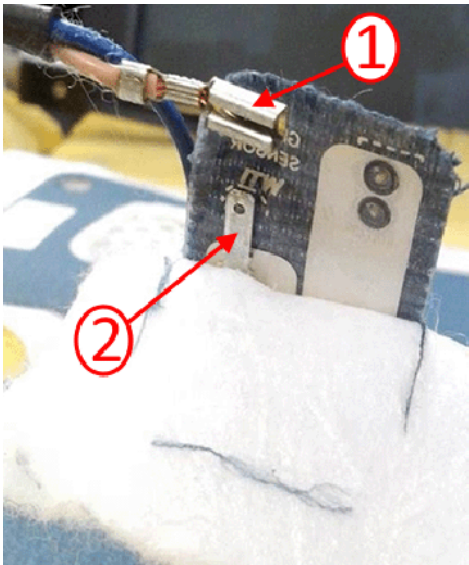
If the PPS module electrical connector is found to be fully seated, the passenger presence sensor mat electrical terminals must be checked for proper connection. Refer to the procedure below.

### Service Procedure



**Note:** To gain access to the passenger presence sensor mat (1) and electrical terminal (2), removal of the seat cushion from the seat frame is required.

1. Remove the passenger side seat. Refer to *Driver or Passenger Seat Removal and Installation* in SI.
2. Remove the seat cushion cover from the seat cushion.
3. Using care, pull the sensor tail up through the foam opening.
4. Using care, remove the felt tape from the terminals.



5. Inspect the passenger presence mat sensor terminals (1) for loose connections.
6. Connect the terminals to the mat sensor (2) making sure the spade terminals are fully seated on the corresponding connectors.
7. Wrap the spade connectors with felt tape making sure the terminals are not exposed.
8. Using care, insert the sensor tail back through the foam opening making sure not to bend the sensor.
9. Install the cushion onto the seat frame.
10. Install the passenger side seat.
11. Perform the Passenger Presence System Preload Test (PPS Setup). Refer to *Passenger Presence System Preload Test (PPS Setup)* in SI.

## Warranty Information

For vehicles repaired under warranty, use:

Labor Operation	Description	Labor Time
7080398*	Check the X2 Electrical Connector and Reset Codes	0.2 hr

Add	Check Terminals at the Passenger Presence Sensor Mat, Connect and Test	0.9 hr
-----	--	--------

\*This is a unique Labor Operation for Bulletin use only.

<b>Version</b>	1
<b>Modified</b>	

GM bulletins are intended for use by professional technicians, NOT a "do-it-yourselfer". They are written to inform these technicians of conditions that may occur on some vehicles, or to provide information that could assist in the proper service of a vehicle. Properly trained technicians have the equipment, tools, safety instructions, and know-how to do a job properly and safely. If a condition is described, DO NOT assume that the bulletin applies to your vehicle, or that your vehicle will have that condition. See your GM dealer for information on whether your vehicle may benefit from the information.



WE SUPPORT VOLUNTARY TECHNICIAN CERTIFICATION