



Service Bulletin

PRELIMINARY INFORMATION

Subject: Possible damage to High voltage connector

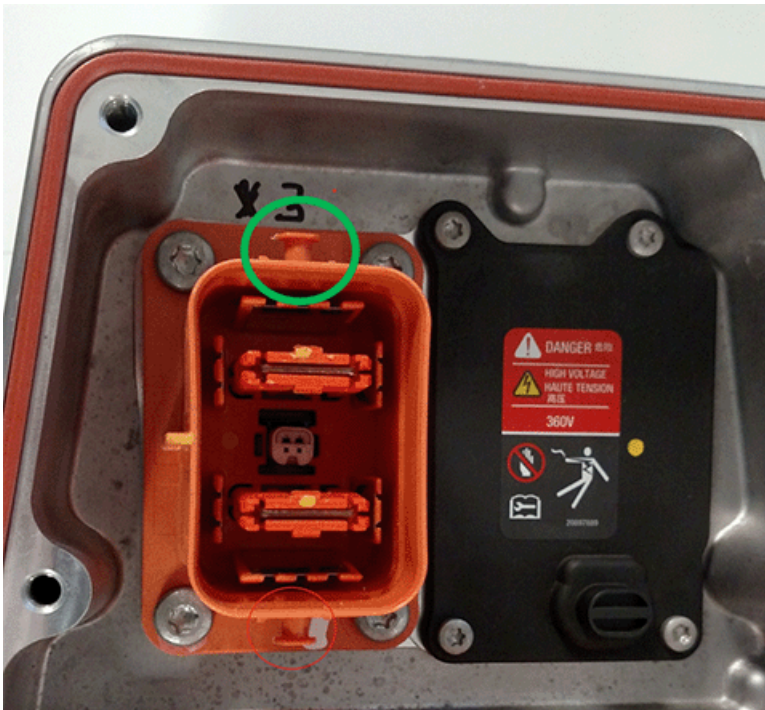
Models: 2016 Chevrolet Volt

The following diagnosis might be helpful if the vehicle exhibits the symptom(s) described in this PI.

Condition/Concern

During service of the high voltage battery the tabs on X3 could be damaged.

Please review SI procedures for proper handling of all high voltage connections.

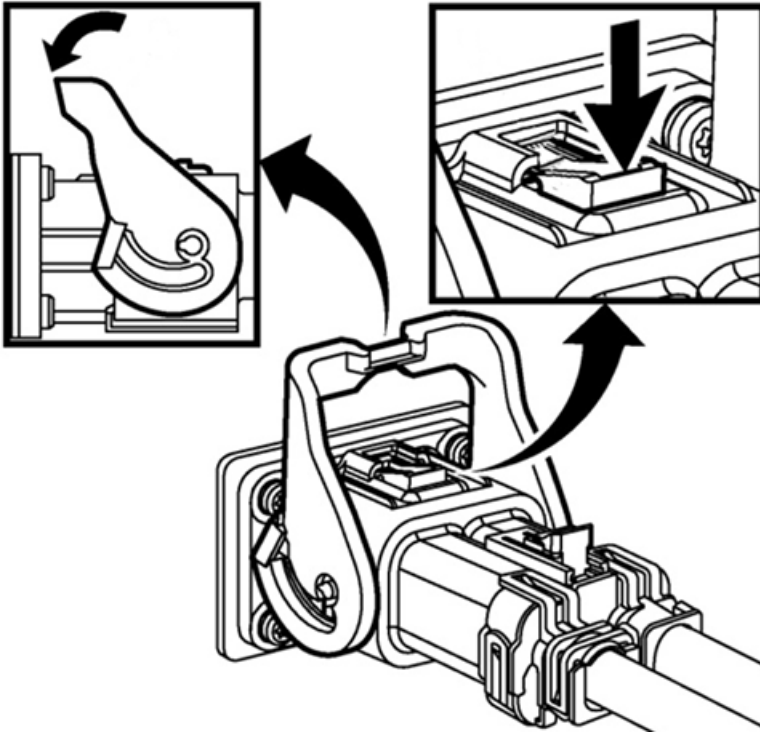


Recommendation/Instructions

Please make sure to use caution when removing and installing this connector.

Warning: If the Tabs on the connector are broken the Hybrid/EV Battery Contactor Assembly (A28) would need to be replaced, the connector is not serviced separately.

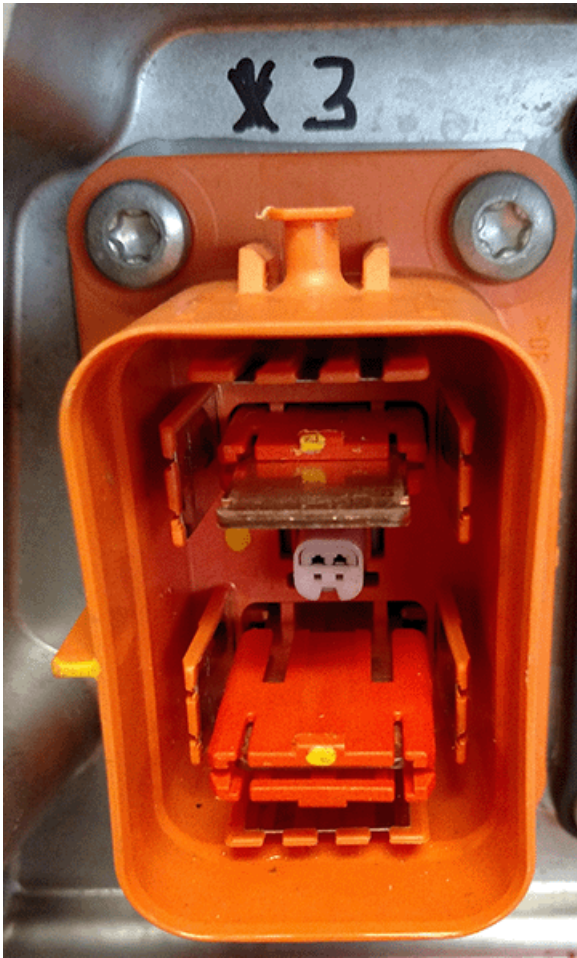
1. Lift and rotate the lever to place the connector in the partial-mate position.



2. Depress the connector lock. Keep the lock depressed and rotate the lever forward to the pre-stage position. There will be an audible click sound when the connector lock disengages.
3. Pull back on the female connector to disconnect the connector completely.

When Installing the Connector:

The terminal protectors could stick in the down position. Make sure they are pulled out, if they are stuck down you can use a plastic trim stick or insulated screwdriver.



Connectors need to be square to each other before the cam lock is engaged.

Push the cable onto Hybrid/EV Battery Contactor Assembly (A28) connector until the lever begins to rotate, initiating engagement. After that, the lever can be used to complete the connection until the locks click for both the connector and the lever, indicating completion. If force seems excessive, do not proceed as the connector on the Hybrid/EV Battery Contactor Assembly (A28) may break.

Please follow this diagnostic or repair process thoroughly and complete each step. If the condition exhibited is resolved without completing every step, the remaining steps do not need to be performed.

GM bulletins are intended for use by professional technicians, NOT a "do-it-yourselfer". They are written to inform these technicians of conditions that may occur on some vehicles, or to provide information that could assist in the proper service of a vehicle. Properly trained technicians have the equipment, tools, safety instructions, and know-how to do a job properly and safely. If a condition is described, DO NOT assume that the bulletin applies to your vehicle, or that your vehicle will have that condition. See your GM dealer for information on whether your vehicle may benefit from the information.



WE SUPPORT VOLUNTARY TECHNICIAN CERTIFICATION