



Service Bulletin

PRELIMINARY INFORMATION

Subject: Reduced Power Steering Assist Engine Stall IPC / Radio / HVAC Goes Blank Various DTCs

Models: 2015 Cadillac Escalade Models
2014 Chevrolet Silverado 1500
2015 Chevrolet Silverado, Suburban, Tahoe
2014 GMC Sierra 1500
2015 GMC Sierra, Yukon Models

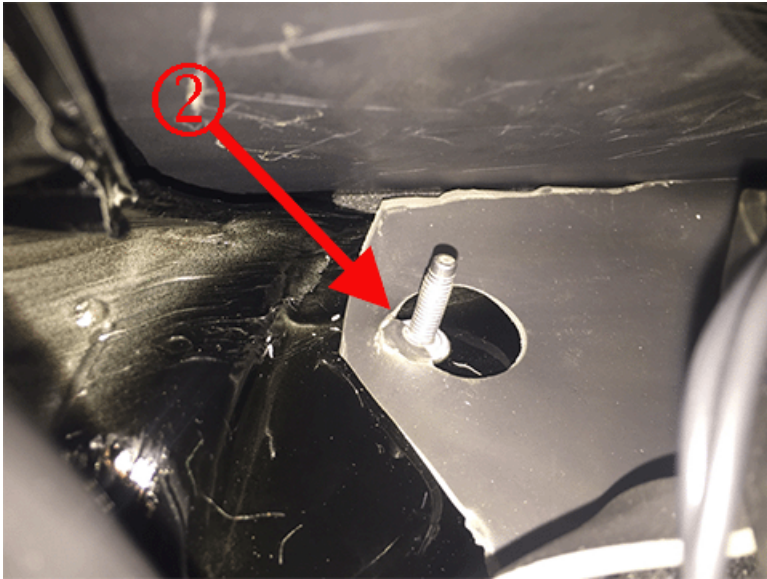
The following diagnosis might be helpful if the vehicle exhibits the symptom(s) described in this PI.

Condition/Concern

Some owners may comment of any of the following issues:

- Reduced power steering assist (only LD models equipped with electric power steering)
- Engine Stall
- IPC going blank or inoperative
- Radio/ICS going blank
- HVAC going blank
- Hood ajar message and/or Dome lamps flash when shifting into reverse
- Alarm sounds when locking doors
- Wipers continue to run for a short time after turning off and then stop/park in the incorrect location
- Any of the following DTCs: U0073, U0078, U0029, U0028, U0415, U0140, U0126, U0121, U0101, U0100, C0544, U1510, U0073, B127B, B2605, B3600, C0800, U0428, U0452

These concerns could be caused by a poor BCM ground at G218. The front of dash insulator mat (2) may be trapped between the ground eyelet and the body/stud as shown below (1).



Recommendation/Instructions

To correct this concern, remove the ground nut and eyelet. Cut the front of the dash insulator mat away from the ground stud so it will no longer interfere. Reinstall the ground eyelet, the nut, and retighten.

Warranty Information

For vehicles repaired under warranty use:

Labor Operation	Description	Labor Time
5430962	Ground Connection Repair	Use Published Labor Operation Time

Please follow this diagnostic or repair process thoroughly and complete each step. If the condition exhibited is resolved without completing every step, the remaining steps do not need to be performed.

GM bulletins are intended for use by professional technicians, NOT a "do-it-yourselfer". They are written to inform these technicians of conditions that may occur on some vehicles, or to provide information that could assist in the proper service of a vehicle. Properly trained technicians have the equipment, tools, safety instructions, and know-how to do a job properly and safely. If a condition is described, DO NOT assume that the bulletin applies to your vehicle, or that your vehicle will have that condition. See your GM dealer for information on whether your vehicle may benefit from the information.



WE SUPPORT VOLUNTARY TECHNICIAN CERTIFICATION