



Service Bulletin

PRELIMINARY INFORMATION

Subject: Front Seat Lateral Movement and/or Click Type Noise While Driving

Models: 2014 Chevrolet Silverado 1500
2014 GMC Sierra 1500

Attention: This PI also applies to any of the above models that may be Middle East and Chile Export vehicles.

This PI has been revised to update the procedure in the Recommendation/Instructions, add part number 13594989 and 13405675 to the Parts Information, remove the Parts Request Form and add Warranty Information. Please discard PI1183.

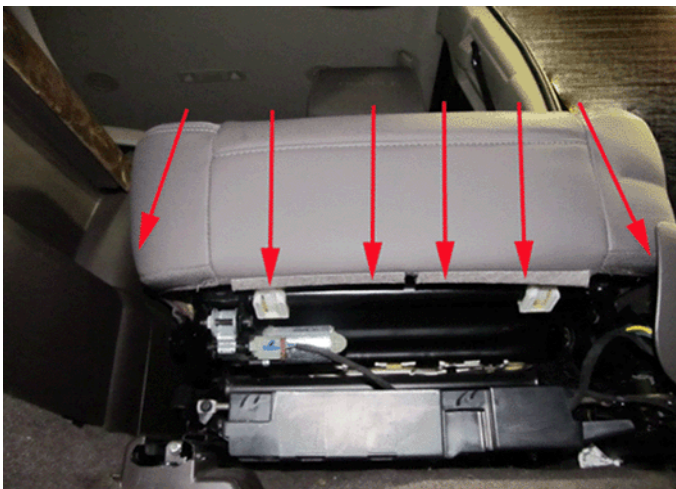
Condition/Concern

Some customers may comment that the driver and/or passenger seat lower cushion exhibits excessive lateral seat movement combined with a clunk type feeling, or generates a click type noise. This condition occurs when the seat is occupied and the vehicle is being driven on roads with multiple curves or during low speed maneuvers.

This condition may be caused by movement in the seat cushion and/or movement between the seat pan front pivot points and the seat frame pivot bar. The plastic attachment points may "stick" then "slip" creating the condition. There may also be excessive clearance between the power seat vertical adjuster actuator and the attachment point on the seat frame.

Recommendation/Instructions

Use the following steps to lubricate the front seat pan pivot points, add a lateral retainer to the outboard pivot, add two pin type trim fasteners to the front of the seat cover, install additional seat cover clips (if required) and install a shim clip between the power seat vertical adjuster actuator and the seat frame:

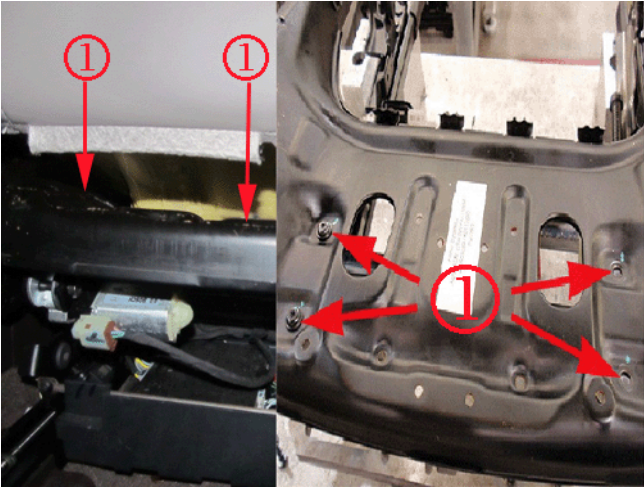


Note: It is not necessary to completely remove the seat cover and pad, only the side and front retainers need to be released. The rear of the cover can remain attached.

1. Partially remove the forward half of the lower seat cushion cover and pad on the affected seat (this procedure includes removing the seat assembly from the vehicle). Refer to Front Seat Cushion Cover and Pad Replacement in SI.

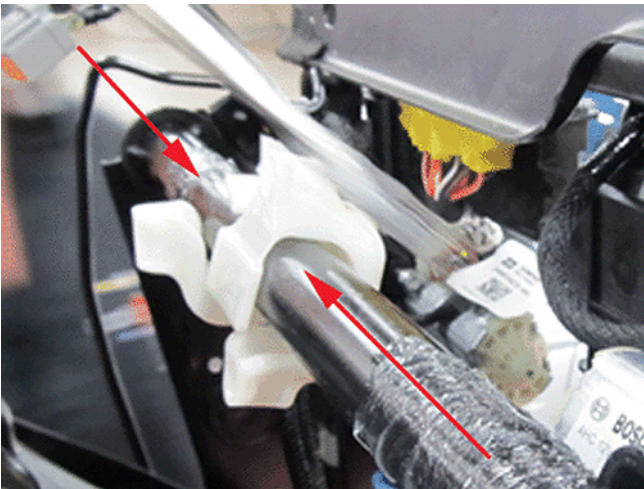
Place the seat assembly on a suitable work area. Use care to place the seat on a soft clean surface to prevent damage to the seat upholstery.

If installed previously, remove the two U-clips located in the front corners.



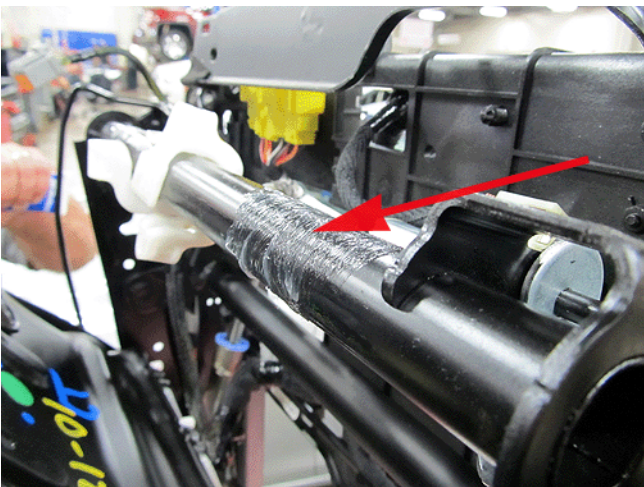
2. Remove the four screws that attach to two pivot block to the seat pan.

Note: Lift the seat pan to provide additional working access.

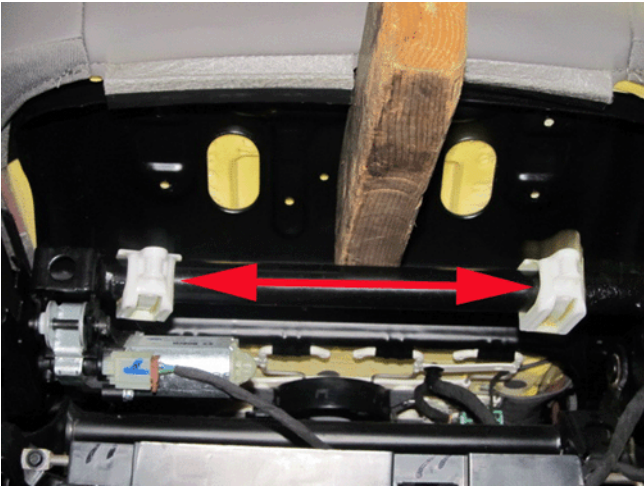


3. Slide the two pivot blocks to the center of the seat to allow for applying grease to the pivot bar.

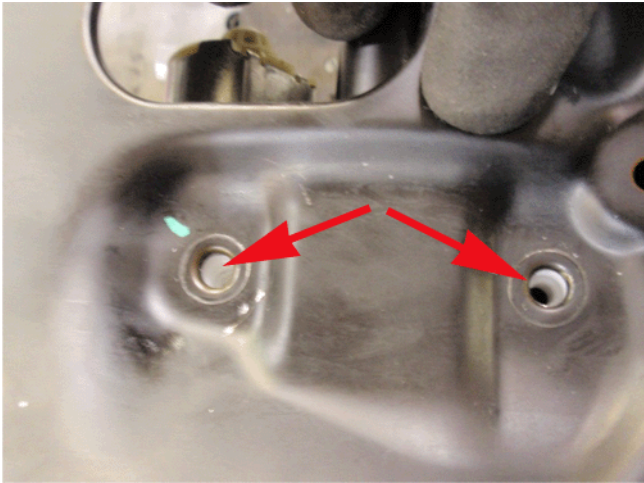
Important: DO NOT attempt to remove the pivot blocks from the seat. Possible damage to the pivot blocks may results.



4. Using a small brush, apply GM Super Lube GM P/N 12371287 (In Canada, use 10953437) as shown. Ensure the complete contact surface is coated.



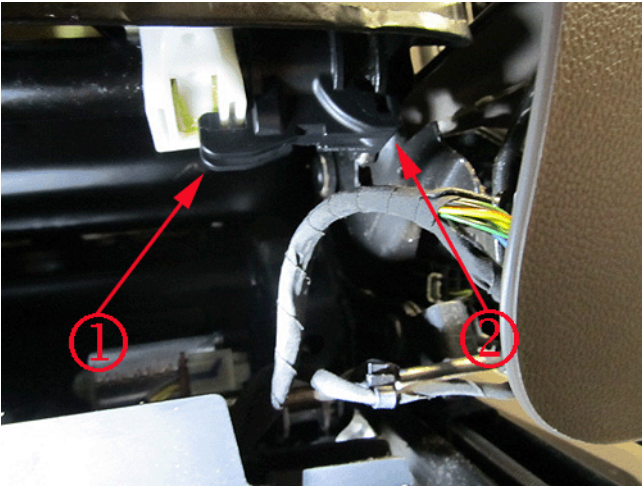
5. Move the pivot blocks back out to their original position.



6. Align the holes in the seat pan with the holes in the pivot blocks.



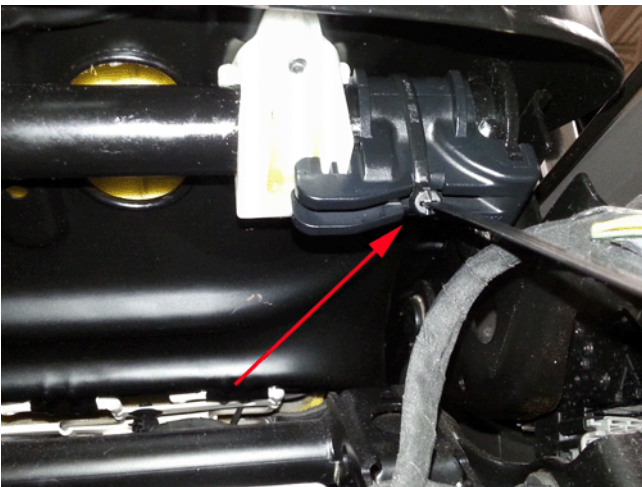
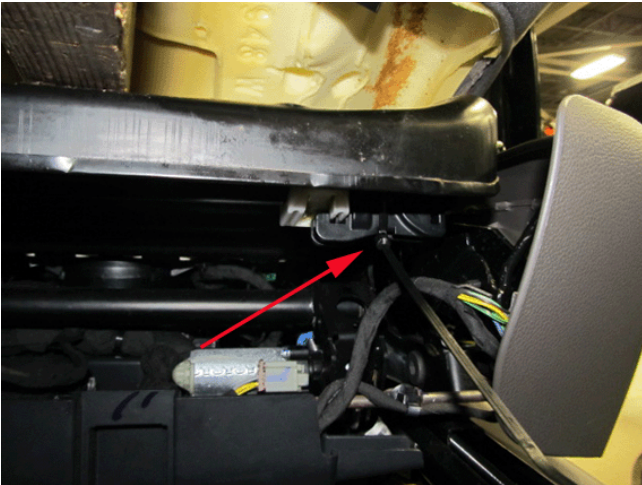
7. Hand start the four screws; Do NOT tighten.



8. Install the lateral retainer to the outboard end of the pivot bar as shown above. Ensure the retainer is fully seated around the pivot bar and to the pivot block.

Note: The lateral retainer can only be installed one way.

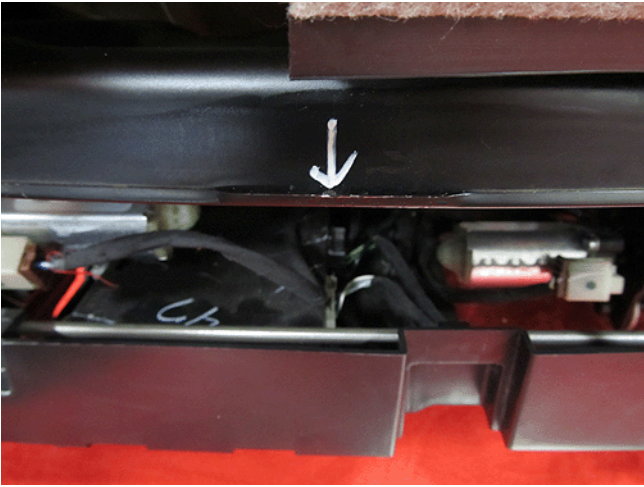
- The double slotted side (1) of the lateral retainer attaches to the pivot block.
- The single slotted side (2) of the lateral retainer attaches to the end of the pivot bar.



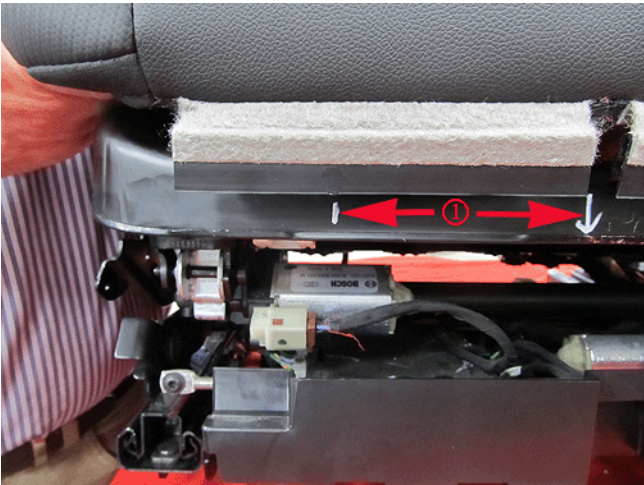
9. Install a nylon tie strap around the retainer as shown above. Trim the excess tie strap material.

10. Tighten the four screws for the pivot blocks.

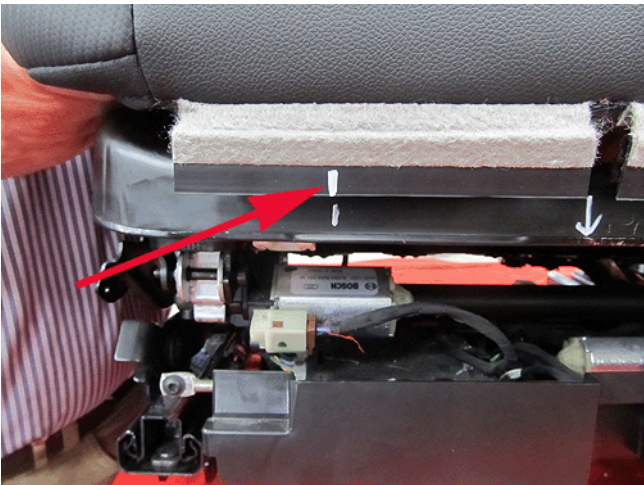
11. Wipe off any excess lubricant.



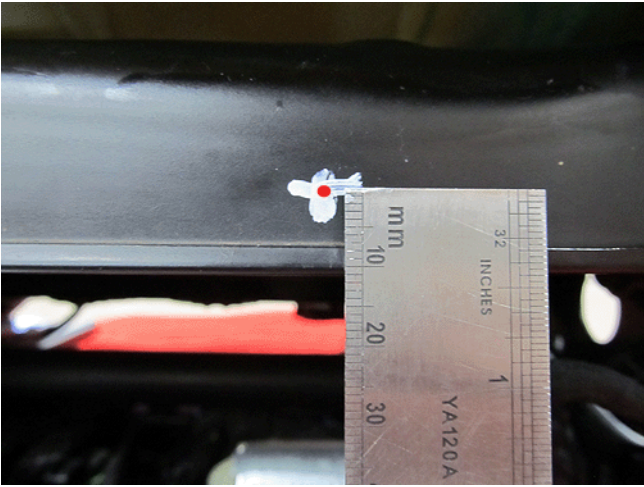
12. Find the approximate center of the front seat steel support and mark the location with a paint pen.



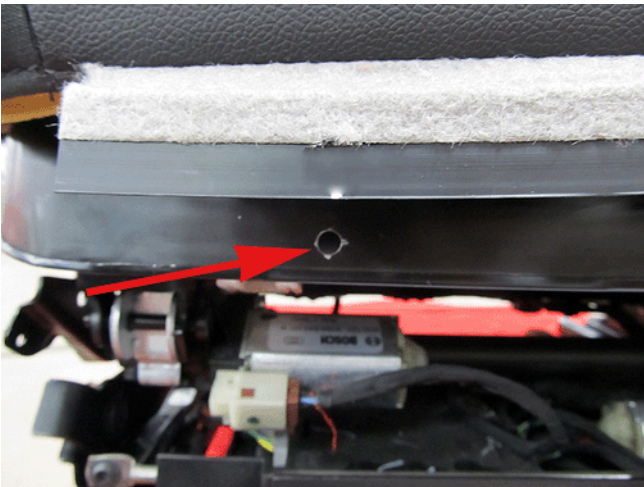
13. Measure 100 mm (4.0 in) on both sides of the center mark and mark the two locations with a paint pen (1).



Mark the same two locations on the corresponding seat cover mounting "J" channel.



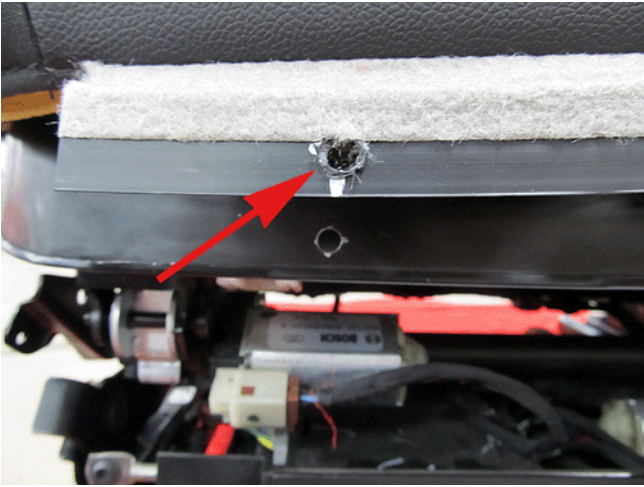
14. Measure up 10 mm (0.39 in) from the lower edge of the steel seat support and mark the location. Perform this on both sides.



15. Drill two 1/4 in. holes in the steel seat support at the marked location as shown.



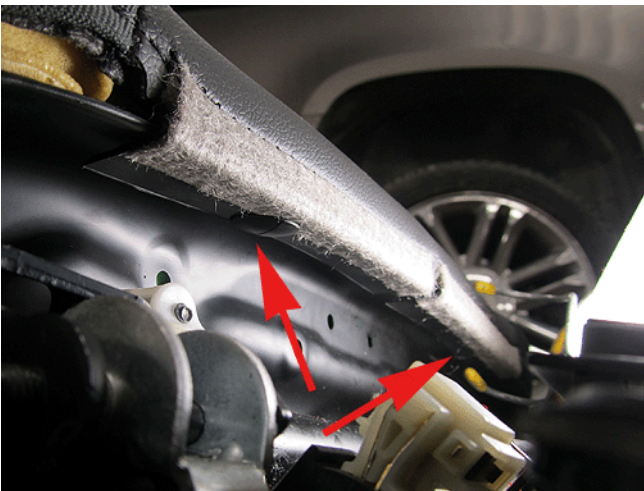
16. On the two seat cover mounting "J" channels, measure up 10 mm (0.39 in) from the lower edge and mark the location.



17. Drill a 5/16 in. hole through the two “J” channels at the marked location.
18. Clean any burred edges from the drilled holes.
19. Using a small brush, apply GM Super Lube GM P/N 12371287 (In Canada, use 10953437) to the drilled holes in the steel seat support. Wipe off any excess lubricant.
20. Reinstall the seat cover “J” channels to the seat pan.

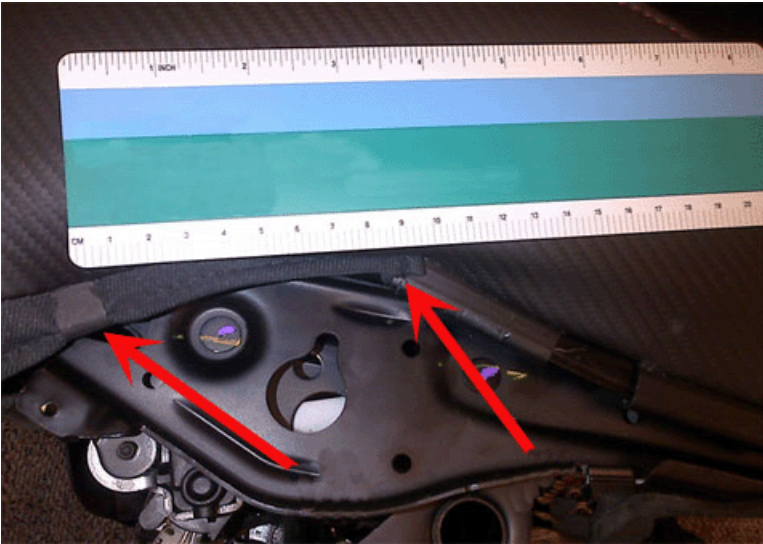


21. Insert two (5/16" stem diameter; 5/8" stem length) push pin retainers, GMP/N 00332364 or the equivalent, into the drilled holes from the underside as shown.



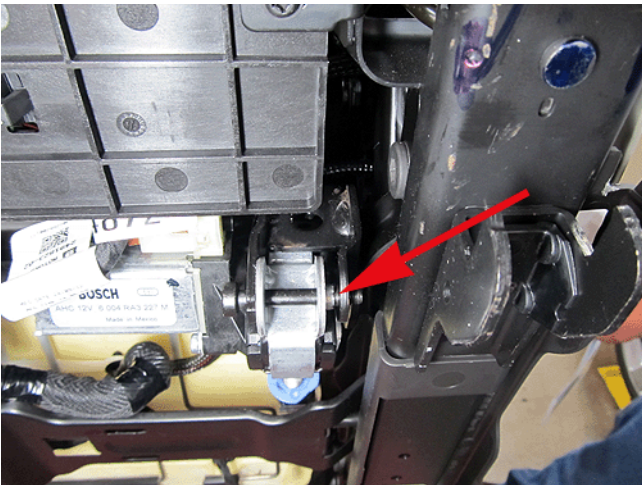
Ensure the push pins are fully seated.

22. Complete reinstalling the lower seat cushion pad on the affected seat. Refer to Front Seat Cushion Cover and Pad Replacement in SI.

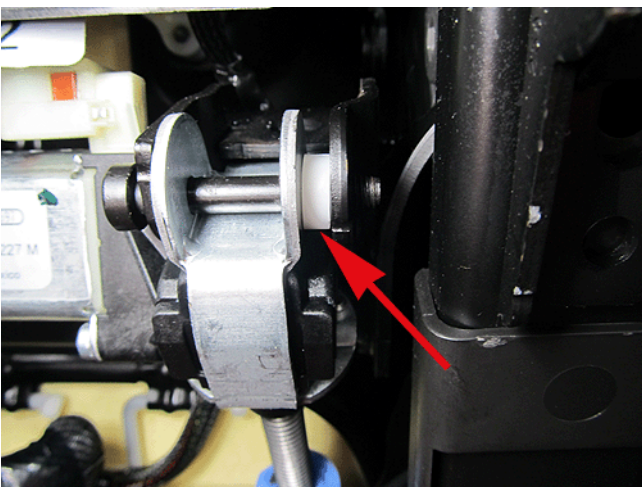


23. When reinstalling the cushion cover, be sure to install two U-clips, GM P/N 11611745, located in the front corners. The U-clips help secure the cover to the seat frame.

Important: Some vehicles may not have the U-clips installed at the factory. It is important to add the clips to prevent cushion movement. Install one U-clip on the inboard and outboard side of the seat (2 clips per seat) as shown below. Install the clips approximately 9cm from the location identified by the right arrow. After the U-clips are installed, crimp each clip with a pair of pliers to secure.



24. Locate the power seat vertical adjuster actuator attachment to the seat frame.



25. Inspect for the presence of the shim clip (1) as shown.
 26. If a shim clip is not present, install the shim clip (1) as shown.

Note: It may be necessary to slightly spread the bracket on the seat frame with a large screwdriver to allow clearance for the clip.

Parts Information

Part Number	Description	Quantity
13405675	Front Seat Lateral Retainer	One Per Seat
13594989	Shim Clip	One Per Seat
00332364	Retainer	Two Per Seat
12371287 (In Canada, use 10953437)	GM Super Lube 3 oz. Tube	As Required

Warranty Information

For vehicles repaired under warranty, use:

Labor Operation	Description	Labor Time
7080098*	Lubricate Front Seat Pivot Points, Install Seat Actuator Shim Clip and Seat Cover Retainers	1.4 hrs
Add	Perform Procedure to Both Seats (if needed)	1.2 hrs

*This is a unique Labor Operation for Bulletin use only. It will not be published in the Labor Time Guide.

GM bulletins are intended for use by professional technicians, NOT a "do-it-yourselfer". They are written to inform these technicians of conditions that may occur on some vehicles, or to provide information that could assist in the proper service of a vehicle. Properly trained technicians have the equipment, tools, safety instructions, and know-how to do a job properly and safely. If a condition is described, DO NOT assume that the bulletin applies to your vehicle, or that your vehicle will have that condition. See your GM dealer for information on whether your vehicle may benefit from the information.



WE SUPPORT VOLUNTARY TECHNICIAN CERTIFICATION