



Service Bulletin

PRELIMINARY INFORMATION

Subject: Diagnostic Tip: Whistle Noise From Inside Vehicle

Models: 2014 Chevrolet Silverado 1500
2015 Chevrolet Silverado HD , Suburban and Tahoe
2014 GMC Sierra 1500
2015 GMC Sierra HD and Yukon models

The following diagnosis might be helpful if the vehicle exhibits the symptom(s) described in this PI.

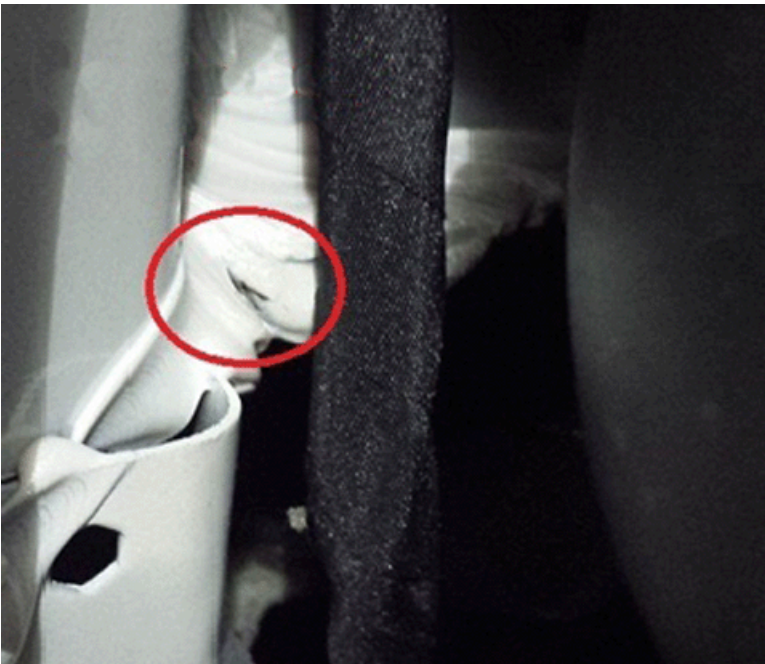
Condition/Concern

Some customers may comment there is a whistle noise in the vehicle from the driver or passenger side. Some may also state this is present while driving or with the HVAC on and in recirculation mode or the noise will change if a window is cracked open. This could be caused by voids in the body sealer in one or more places.

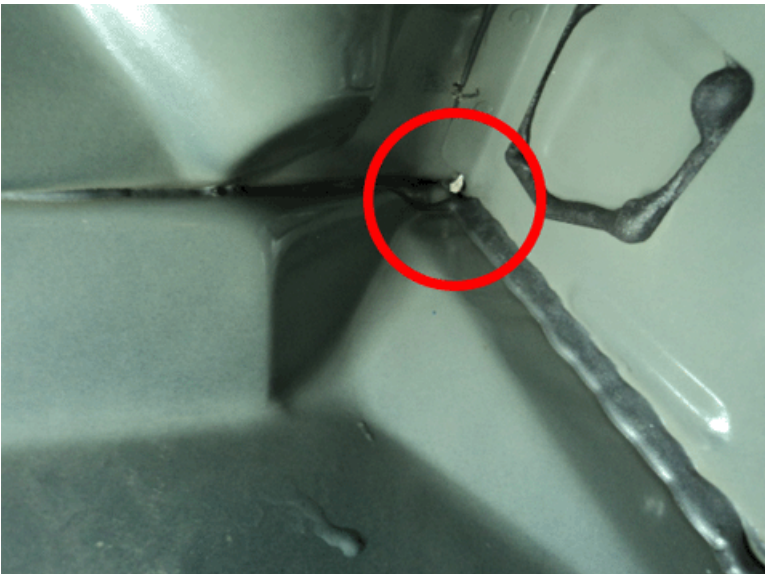
Recommendation/Instructions

1. Inspect for voids in the body sealer on the left or right side A-pillar as shown in pictures below



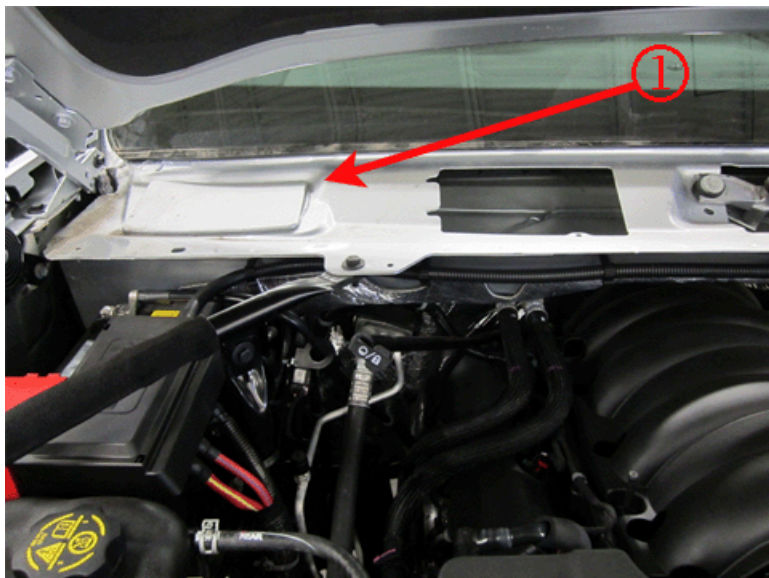


2. Inspect for voids in the body sealer at the cowl seam on the left side as in picture below



3. Inspect for voids in the body sealer at the cowl seam on the right side under the plenum cover cap as shown in picture below

Note: The plenum cover cap must be removed and resealed to perform this inspection.



Warranty Information

For vehicles repaired under warranty use:

Labor Operation	Description	Labor Time
0560032	Body Joint Resealing	Use Published Labor Operation Time
0560052	Plenum Panel Resealing	Use Published Labor Operation Time

Please follow this diagnostic or repair process thoroughly and complete each step. If the condition exhibited is resolved without completing every step, the remaining steps do not need to be performed.

GM bulletins are intended for use by professional technicians, NOT a "do-it-yourselfer". They are written to inform these technicians of conditions that may occur on some vehicles, or to provide information that could assist in the proper service of a vehicle. Properly trained technicians have the equipment, tools, safety instructions, and know-how to do a job properly and safely. If a condition is described, DO NOT assume that the bulletin applies to your vehicle, or that your vehicle will have that condition. See your GM dealer for information on whether your vehicle may benefit from the information.



WE SUPPORT VOLUNTARY TECHNICIAN CERTIFICATION