



Service Bulletin

PRELIMINARY INFORMATION

Subject: Engine Misfire May Be Due To loose Spark Plug Wires

Models: 2015-2017 Cadillac Escalade
2016-2017 Cadillac CTS-V
2016-2017 Chevrolet Camaro
2014- 2015 Chevrolet Corvette
2014-2015 Chevrolet Silverado 1500 Suburban, Tahoe
2014-2015 GMC Sierra 1500 Yukon
Built with RPO's 4.3L 5.3L 6.2L L83 L86 LT1 LV3

This PI was superseded to update Model Years. Please discard PIP5159A.

The following diagnosis might be helpful if the vehicle exhibits the symptom(s) described in this PI.

Condition/Concern

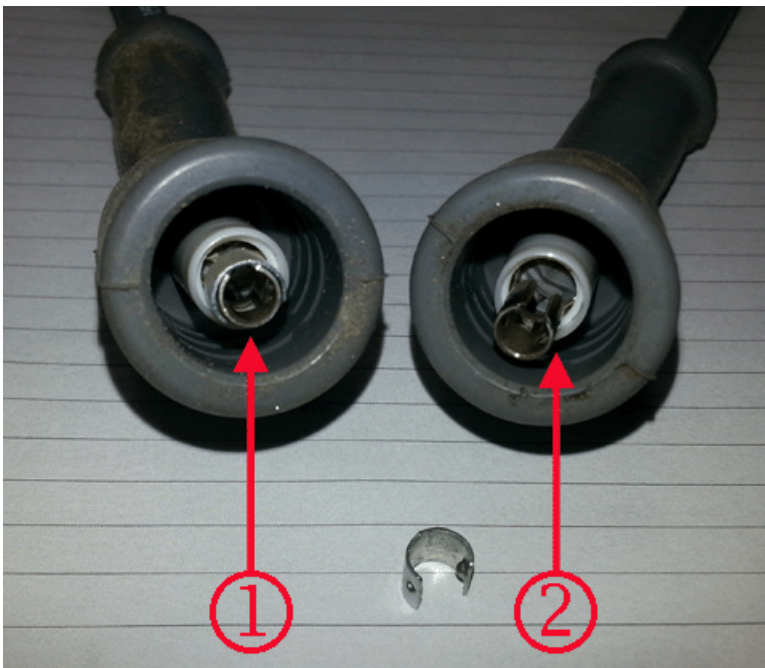
SES lamp on, DTC P0300 - P0308 may set, inspect for a possible loose sparkplug wire at the ignition coil.

Recommendation/Instructions

If a loose sparkplug wire is found, inspect for missing "C" clip on wire end that connects to the ignition coil.

Replace the sparkplug wire if you find the "C" clip missing or damaged

If this concern is not found reconnect the sparkplug wire to the ignition coil.



1. Shows a good sparkplug wire.
2. Shows the wire with the C clip missing.

Warranty Information

For vehicles repaired under warranty use:

Labor Operation	Description	Labor Time
4020050	Spark Plug Wire Replacement	Use Published Labor Operation Time

Please follow this diagnostic or repair process thoroughly and complete each step. If the condition exhibited is resolved without completing every step, the remaining steps do not need to be performed.

GM bulletins are intended for use by professional technicians, NOT a "do-it-yourselfer". They are written to inform these technicians of conditions that may occur on some vehicles, or to provide information that could assist in the proper service of a vehicle. Properly trained technicians have the equipment, tools, safety instructions, and know-how to do a job properly and safely. If a condition is described, DO NOT assume that the bulletin applies to your vehicle, or that your vehicle will have that condition. See your GM dealer for information on whether your vehicle may benefit from the information.



WE SUPPORT VOLUNTARY TECHNICIAN CERTIFICATION